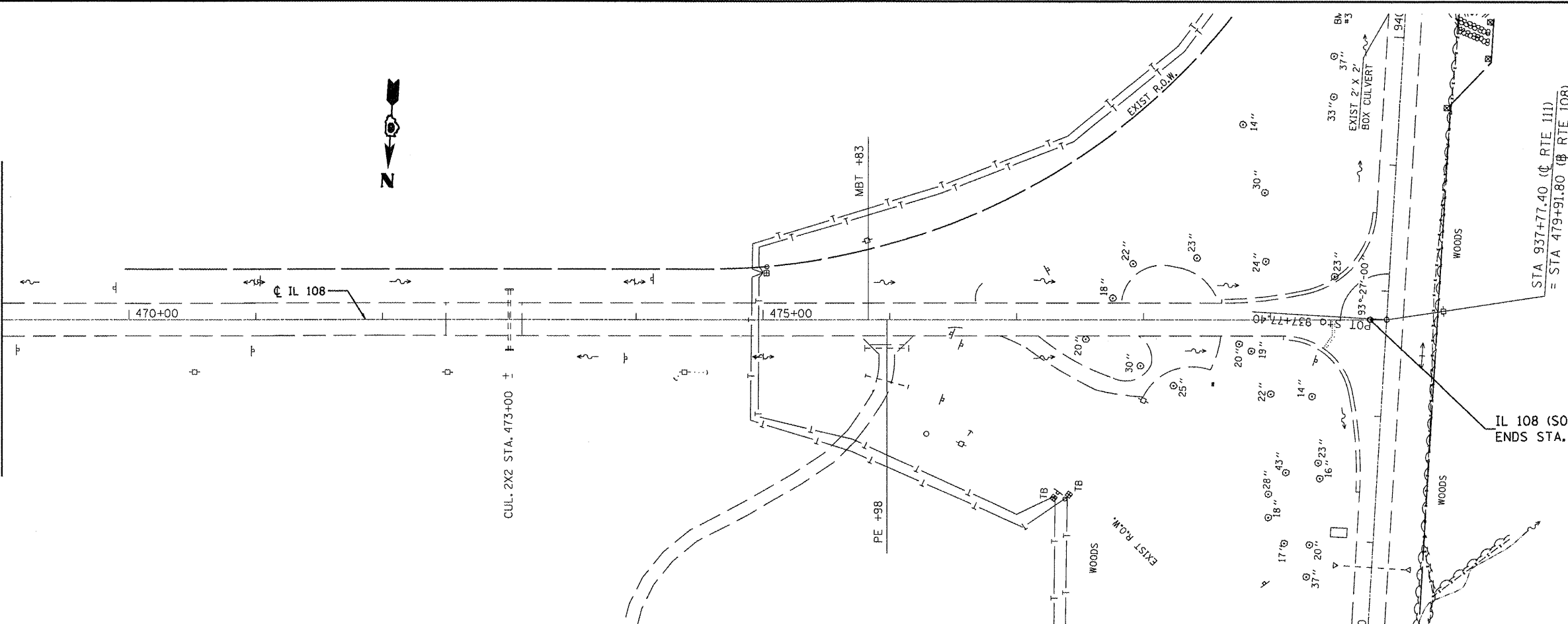


MATCHLINE STA. 469+00.00



STA. 937+77.40 (C. RTE. 111)
= STA. 479+91.80 (C. RTE. 108)

IL 108 (SOUTH) IMPROVEMENT
ENDS STA. 479+78.80

BM #3 - CHSLO. " " IN CONC. HDW
STA. 940+17.8, 38' LT., ELEV. 594.50
(ELEV. 594.50 IS FROM SURVEY BKS
FOR RTE. 111 - SOUTH OF RTE. 108
EAST TO CARLINVILLE)

• FAP 765 & FAP 608
** SECTION 10TRS-3, 108RS-1, 109RS-3

FILE NAME = c:\pwork\pwork\laughlin\ld0215448\06	USER NAME = laughlin-1	DESIGNED -	REVISED -
	C36-shr-plan-IL108south.dgn	DRAWN -	REVISED -
	PLDT SCALE = 100.0000' / 1" =	CHECKED -	REVISED -
	PLOT DATE = Dec-17-2018 01:59:16PM	DATE -	REVISED -

**STATE OF ILLINOIS
DEPARTMENT OF TRANSPORTATION**

IL 108 PLAN

SCALE: SHEET NO. OF SHEETS STA. 469+00.00 TO STA. 479+91.80

F.A.P. RTE.	SECTION	COUNTY	TOTAL SHEETS	SHEET NO.
.	**	MACOUPIN	46	41
CONTRACT NO. 72C36				
ILLINOIS FED. AID PROJECT				