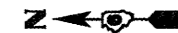


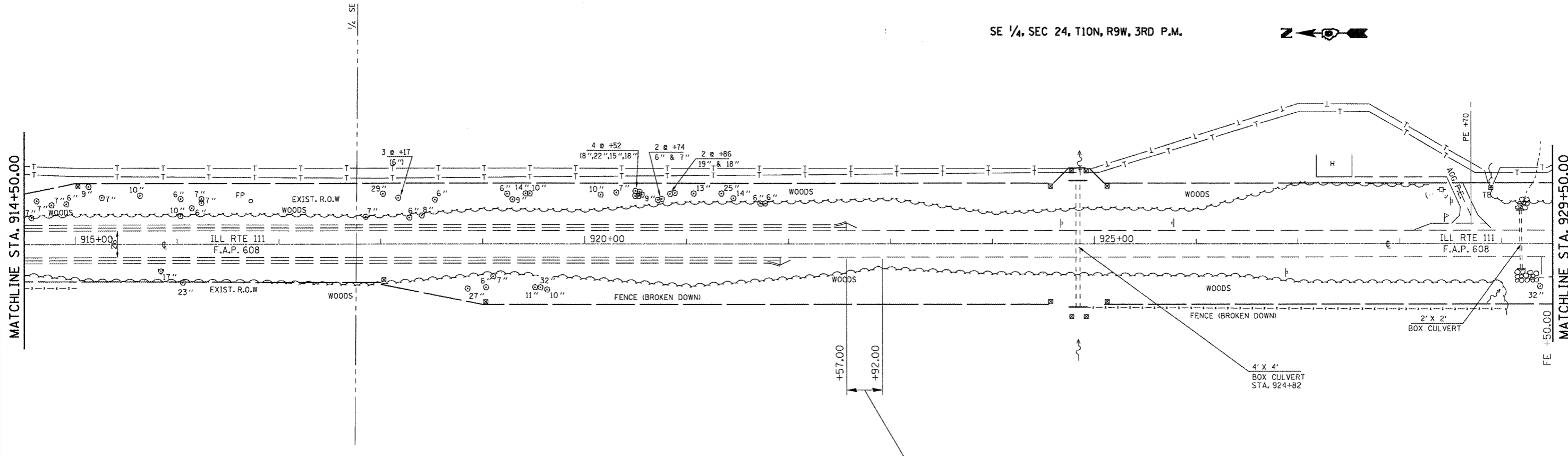
1/4 SE

SE 1/4, SEC 24, T10N, R9W, 3RD P.M.



MATCHLINE STA. 914+50.00

MATCHLINE STA. 929+50.00



PROPOSED MILLING TRANSITION 35'  
FOR DETAILS SEE BUTT JOINT &  
MILLING TRANSITION DETAILS SHEET

• FAP 765 & FAP 608  
•• SECTION 107RS-3, 108RS-1, 109RS-3

FILE NAME = c:\pwork\pvidot\laughlinr1\0215448\067C36-shr-plan-IL111&IL108nor-th.dgn	USER NAME = laughlinr1	DESIGNED -	REVISED -	<b>STATE OF ILLINOIS DEPARTMENT OF TRANSPORTATION</b>	<b>IL 111 PLAN</b>			F.A.P. RTE.	SECTION	COUNTY	TOTAL SHEETS	SHEET NO.
	PLT SCALE = 1/8" = 100.0000' / in.	CHECKED -	REVISED -					•	••	MACOUPIN	46	44
PLT DATE = Dec-17-2010 01:59:24PM	DATE -	REVISED -	REVISED -	SCALE:	SHEET NO. OF	SHEETS	STA. 914+50.00 TO STA. 929+50.00	ILLINOIS FED. AID PROJECT				
								CONTRACT NO. 72C36				