

STATE OF ILLINOIS
DEPARTMENT OF TRANSPORTATION
DIVISION OF HIGHWAYS

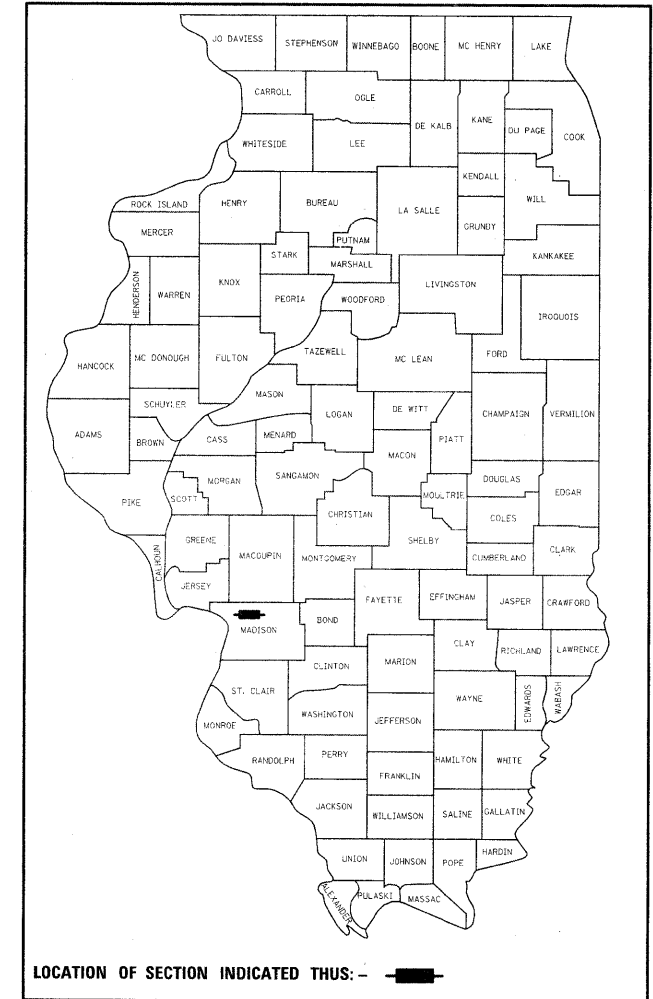
**PROPOSED
HIGHWAY PLANS**

FAP ROUTE 785 (IL 140 / IL 111)
SECTION (132-2,3,4, 133-1)RS
PROJECT F-0785(032)
RESURFACING AND BI-DIRECTIONAL TURN LANE
MADISON COUNTY

FOR INDEX OF SHEETS, SEE SHEET NO. 2

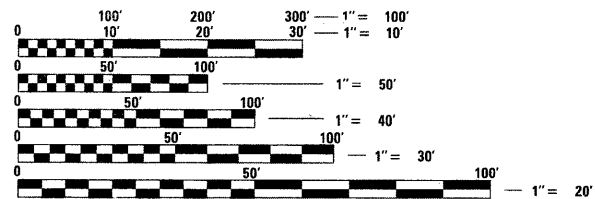
F.A.P. RTE.	SECTION	COUNTY	TOTAL SHEETS	SHEET NO.
785	(132-2,3,4, 133-1)RS	MADISON	122	1
		ILLINOIS	CONTRACT NO. 76B80	

D-98-052-08



TRAFFIC DATA
ADT = 23,000
MU = 1.6%
SU = 2.8%

FUNCTIONAL CLASS
OTHER PRINCIPAL ARTERIAL

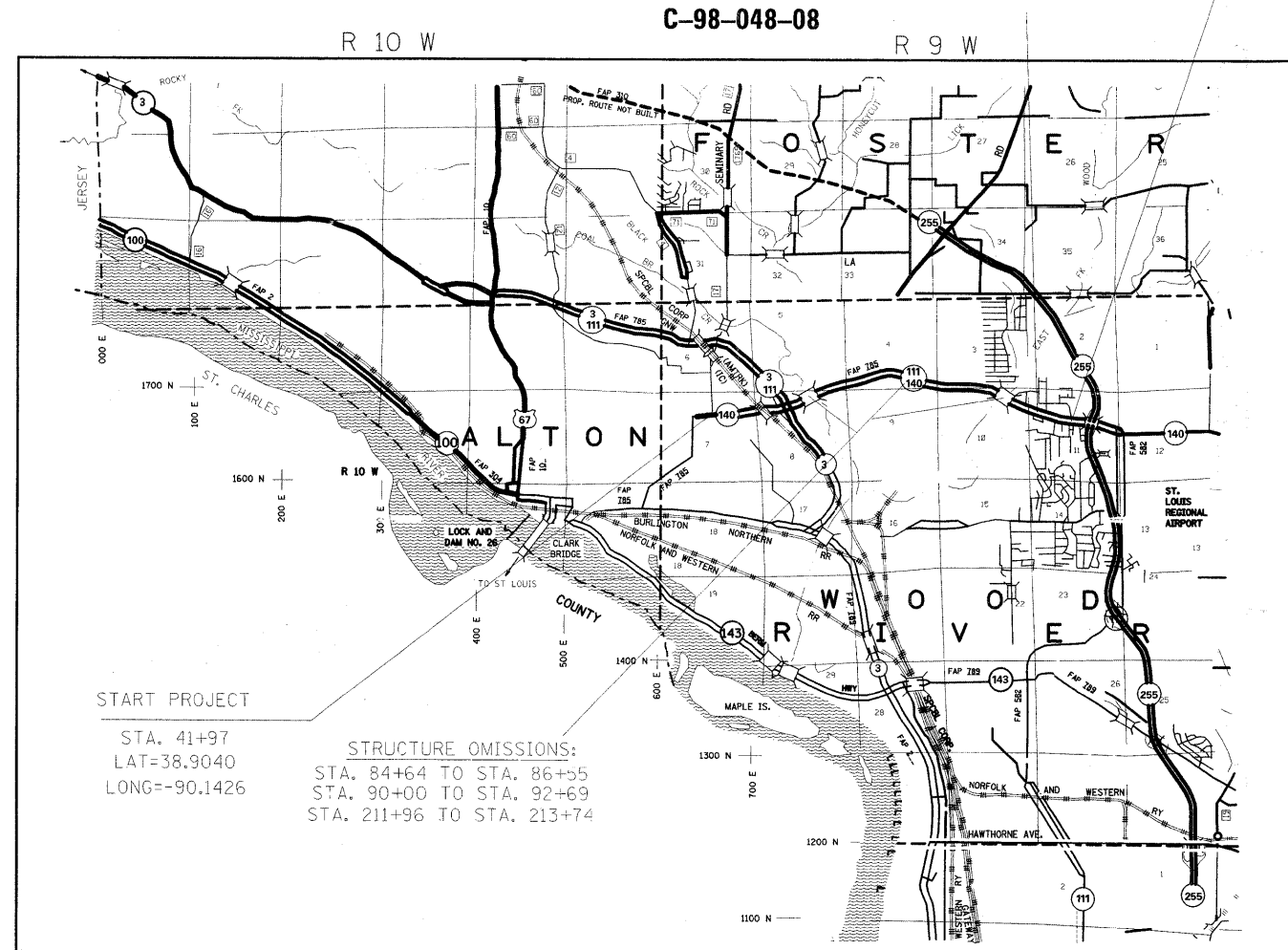


FULL SIZE PLANS HAVE BEEN PREPARED USING STANDARD ENGINEERING SCALES. REDUCED SIZED PLANS WILL NOT CONFORM TO STANDARD SCALES. IN MAKING MEASUREMENTS ON REDUCED PLANS, THE ABOVE SCALES MAY BE USED.

J.U.L.I.E.
JOINT UTILITY LOCATION INFORMATION FOR EXCAVATION
1-800-892-0123
OR 811

PROJECT ENGINEER: TIM PADGETT (618)346-3325
PROJECT MANAGER: AARON KARLAS (618)346-3208

CONTRACT NO. 76B80



STATE OF ILLINOIS
DEPARTMENT OF TRANSPORTATION
DIVISION OF HIGHWAYS

SUBMITTED Feb 7 20 11
W. C. Amis
DEPUTY DIRECTOR OF HIGHWAYS, REGION ENGINEER

March 25 20 11
Scott E. Stitt, P.E.
acting ENGINEER OF DESIGN AND ENVIRONMENT

March 25 20 11
Christine M. Reed
DIRECTOR OF HIGHWAYS, CHIEF ENGINEER

**PRINTED BY THE AUTHORITY
OF THE STATE OF ILLINOIS**