

# INDEX OF SHEETS

SHEET NO.	DESCRIPTION
1	COVER SHEET
2	SIGNATURE SHEET
3	INDEX OF SHEETS AND STANDARDS
4	GENERAL NOTES AND MIX DESIGN
5-8	SUMMARY OF QUANTITIES
9-16	TYPICAL SECTIONS
17-18	PAVEMENT SCHEDULE
19	DRAINAGE AND PIPE UNDERDRAIN SCHEDULES
20	EARTHWORK SCHEDULE
21	END AREAS SCHEDULE
22	GUARDRAIL AND SEEDING & EROSION CONTROL SCHEDULES
23	PAVEMENT MARKING SCHEDULE
24	TEMPORARY CONCRETE BARRIER, TEMPORARY PAVEMENT, EMERGENCY MEDIAN CROSSOVER SCHEDULES, AND LIGHTING SCHEDULE
25-26	STAGING/MAINTENANCE OF TRAFFIC TYPICALS
27-43	STAGING/MAINTENANCE OF TRAFFIC SHEETS - STAGE 1
44-61	STAGING/MAINTENANCE OF TRAFFIC SHEETS - STAGE 2
62-69	STAGING/MAINTENANCE OF TRAFFIC SHEETS - STAGE 2A
70-87	STAGING/MAINTENANCE OF TRAFFIC SHEETS - STAGE 3
88-95	STAGING/MAINTENANCE OF TRAFFIC SHEETS - STAGE 3A
96-101	STAGING/MAINTENANCE OF TRAFFIC SHEETS - STAGE 4
102-117	PLAN SHEETS
118-132	PROFILE SHEETS - I-57/64 MAINLINE
133-134	PROFILE SHEETS - VETERAN'S DRIVE INTERCHANGE
135-136	PROFILE SHEETS - IL 15 INTERCHANGE
137-140	PROFILE SHEETS - MEDIAN CROSSOVERS
141	BRIDGE PLANS - STAGING PLAN (STAGE 1)
142	BRIDGE PLANS - STAGING PLAN (STAGE 2)
143-154	BRIDGE PLANS AND DETAILS
155	DETAILS OF CONCRETE COLLAR, TEMPORARY DITCH CHECKS, CONCRETE COLLAR FOR PRECAST BOX CULVERT, AND PROPOSED EMERGENCY MEDIAN CROSSOVER
155A	LIGHTING DETAILS
156	BRIDGE APPROACH PAVEMENT DETAIL
157	PAYMENT LIMITS FOR PRECAST CONCRETE BOX CULVERTS
158	DETAIL OF PRECAST CONCRETE BOX CULVERT END SECTION
159	DETAIL OF PRECAST CONCRETE BOX CULVERT SECTION
160	SEEDING & MULCHING DETAIL AND TYPICAL CROSS SECTION SHOWING STEP CONSTRUCTION ON EXISTING FILL
161	TYPICAL SECTIONS OF TRANSITIONS OF SLOPES AND INCIDENTAL GRADING
162	TEMPORARY INLET DETAIL
163-280	CROSS SECTIONS - I-57/64 SB LANES
281-391	CROSS SECTIONS - I-57/64 NB LANES
392-404	CROSS SECTIONS - VETERAN'S DRIVE INTERCHANGE
405-422	CROSS SECTIONS - IL 15 INTERCHANGE

# STANDARDS

202001-01	EARTH MEDIAN DITCH CHECK
280001-05	TEMPORARY EROSION CONTROL SYSTEMS
420001-07	PAVEMENT JOINTS
420101-04	24' (7.2 M) JOINTED PCC PAVEMENT
420111-03	PCC PAVMENT ROUNDOUTS
420206-08	ENTRANCE RAMP TERMINAL (JOINTED PCC RAMP PAVMENT ADJACENT TO CRC MAINLINE PAVMENT)
420306-06	EXIT RAMP TERMINAL (JOINTED PCC RAMP PAVMENT ADJACENT TO CRC MAINLINE PAVEMENT)
421001-02	BAR REINFORCEMENT FOR CRC PAVEMENT
421206-06	36' (10.8 M) CRC PAVMENT (WITH LUG SYSTEM)
442101-07	CLASS B PATCHES
483001-04	PCC SHOULDER
542301-03	PRECAST REINFORCED CONCRETE FLARED END SECTION
542511-02	INLET BOX TYPE 24 (600) C
542516-03	INLET BOX TYPE 24 (600) D
542526-03	INLET BOX TYPE 24 (600) F
542531-04	INLET BOX TYPE 24 (600) G
542536-03	INLET BOX TYPE 36 (900) A
542546-01	FLUSH INLET BOX FOR MEDIAN
542606-02	REINFORCED CONCRETE PIPE TEE
601001-04	SUB-SURFACE DRAINS
601101-01	CONCRETE HEADWALL FOR PIPE DRAIN
630001-09	STEEL PLATE BEAM GUARDRAIL
630201-06	PCC/HMA STABILIZATION AT STEEL PLATE BEAM GUARDRAIL
630301-05	SHOULDER WIDENING FOR TYPE 1 (SPECIAL) GUARDRAIL TERMINALS
631011-07	TRAFFIC BARRIER TERMINAL, TYPE 2
631031-09	TRAFFIC BARRIER TERMINAL, TYPE 6
635001-01	DELINEATORS
635006-03	REFLECTOR AND TERMINAL MARKER PLACEMENT
635011-02	REFLECTOR MARKER AND MOUNTING DETAILS
642001-01	SHOULDER RUMBLE STRIPS
701101-02	OFF-ROAD OPERATIONS, MULTILANE, 15' (4.5M) TO 24' (600MM) FROM EDGE OF PAVMENT
701400-05	APPROACH TO LANE CLOSURE, FREEWAY/EXPRESSWAY
701401-06	LANE CLOSURE, FREEWAY/EXPRESSWAY
701402-08	LANE CLOSURE, FREEWAY/EXPRESSWAY, WITH BARRIER
701411-07	LANE CLOSURE, MULTILANE, AT ENTRANCE OR EXIT RAMP, FOR SPEEDS > 45
701416-06	LANE CLOSURE, FREEWAY/EXPRESSWAY, WITH CROSSOVER AND BARRIER
701426-04	LANE CLOSURE, MULTILANE, INTERMITTENT OR MOVING OPERATION, FOR SPEEDS > 45
701451-01	RAMP CLOSURE FREEWAY/EXPRESSWAY
701456-01	PARTIAL EXIT RAMP CLOSURE FREEWAY/EXPRESSWAY
701901-01	TRAFFIC CONTROL DEVICES
704001-06	TEMPORARY CONCRETE BARRIER
780001-02	TYPICAL PAVMENT MARKINGS
781001-03	TYPICAL APPLICATIONS RAISED REFLECTIVE PAVMENT MARKERS
836001	LIGHT POLE FOUNDATION

REVIS<sup>d</sup> SHEET 4/15/11

FILE NAME = F:\p1en-revisions.dgn	USER NAME = Gary Davis	DESIGNED -	REVISED -	<b>STATE OF ILLINOIS DEPARTMENT OF TRANSPORTATION</b>	<b>INDEX OF SHEETS &amp; STANDARDS</b>			F.A.I. RTE. 57	SECTION •	COUNTY Jefferson	TOTAL SHEETS 422	SHEET NO. 3
	PLOT SCALE = 50.0000' / IN.	DRAWN -	REVISED -		SCALE:	SHEET NO.	OF	SHEETS	STA.	TO STA.	CONTRACT NO. 78172	
	PLOT DATE = 4/14/2011	CHECKED -	REVISED -		ILLINOIS FED. AID PROJECT							
		DATE -	REVISED -		(41-2-1,41-3,41-3-1)R-1							

# SUMMARY OF QUANTITIES

CODE NUMBER	ITEM DESCRIPTION	UNIT	TOTAL QUANTITY	JEFFERSON ROADWAY URBAN	JEFFERSON BRIDGE URBAN
				90% FED 10% STATE 0003	041-0012 (NB) 041-0013 (SB) 90% FED/10% ST 0014
CONSTRUCTION TYPE CODE					
XZ191203	BRIDGE DECK MICROSILICA CONCRETE OVERLAY 2 3/4"	SQ YD	1,642		1642
* X0300780	ELECTRIC PIEZO SENSOR CABLE IN CONDUIT	FOOT	856	856	
* X0323014	ELECTRIC CABLE IN CONDUIT, CONOGA-30003	FOOT	1,572	1572	
* X0323015	PIEZO ELECTRIC AXLE SENSOR, CLASS II	FOOT	6	6	
X0323236	TEMPORARY INLET	EACH	14	14	
<del>X0325571</del>	<del>TRAFFIC CONTROL SUPERVISOR</del>	<del>CAL DA</del>	<del>64</del>	<del>64</del>	
X0326458	PAVEMENT REPLACEMENT, SPECIAL	SQ YD	10,586	10,586	
X4401198	HOT-MIX ASPHALT SURFACE REMOVAL, VARIABLE DEPTH	SQ YD	7,917	7,659	258
X4404400	PAVEMENT REMOVAL (SPECIAL)	SQ YD	10,586	10,586	
X5030530	FLOOR DRAIN EXTENSION	EACH	24		24
<del>X7010237</del>	<del>CHANGEABLE MESSAGE SIGN, SPECIAL</del>	<del>CAL DA</del>	<del>120</del>	<del>120</del>	
X7010216	TRAFFIC CONTROL AND PROTECTION, (SPECIAL)	L SUM	1	1	
* X7830070	GROOVING FOR RECESSED PAVEMENT MARKING 5"	FOOT	83,882	83,882	
* X7830074	GROOVING FOR RECESSED PAVEMENT MARKING 7"	FOOT	27,547	27,547	
* X7830076	GROOVING FOR RECESSED PAVEMENT MARKING 9"	FOOT	7,207	7,207	
* X7830078	GROOVING FOR RECESSED PAVEMENT MARKING 13"	FOOT	307	307	
* X8190205	TRENCH AND BACKFILL FOR ELECTRICAL WORK (SPECIAL)	FOOT	112	112	
* X8570000	SMART TRAFFIC MONITORING SYSTEM	L SUM	1	1	
Z0001899	JACK AND REMOVE EXISTING BEARINGS	EACH	16		16
Z0040530	PIPE UNDERDRAIN REMOVAL	FOOT	37,600	37,600	
Z0004556	HOT-MIX ASPHALT SURFACE REMOVAL (DECK)	SQ YD	1,642		1,642
Z0012130	BRIDGE DECK SCARIFICATION 3/4"	SQ YD	1,642		1,642
Z0013798	CONSTRUCTION LAYOUT	L SUM	1	1	
Z0016001	DECK SLAB REPAIR (FULL DEPTH, TYPE I)	SQ YD	13		13
Z0026346	NIGHTTIME WORK ZONE LIGHTING	L SUM	1	1	
Z0030250	IMPACT ATTENUATORS, TEMPORARY (NON-REDIRECTIVE), TEST LEVEL 3	EACH	2	2	
Z0030350	IMPACT ATTENUATORS, RELOCATE (NON-REDIRECTIVE), TEST LEVEL 3	EACH	10	6	4
Z0048665	RAILROAD PROTECTIVE LIABILITY INSURANCE	L SUM	1		1
Z0055605	RUBBLIZING PORTLAND CEMENT CONCRETE PAVEMENT	SQ YD	55,661	55,661	
Z0062456	TEMPORARY PAVEMENT	SQ YD	8,856	8,856	
20200100	EARTH EXCAVATION	CU YD	48,118	48,118	
20400100	BORROW EXCAVATION	CU YD	58,851	58,851	
20900110	POROUS GRANULAR BACKFILL	CU YD	104	104	
* 25C 00200	SEEDING, CLASS 2	ACRE	44	44	
* 25C 00350	SEEDING, CLASS 7	ACRE	44	44	

\*SPECIALTY ITEM

REVISSED 4/15/11

FILE NAME =	USER NAME = colemm	DESIGNED -	REVISED -	<b>STATE OF ILLINOIS DEPARTMENT OF TRANSPORTATION</b>	<b>SUMMARY OF QUANTITIES</b>			F.A.I. RTE.	SECTION	COUNTY	TOTAL SHEETS	SHEET NO.
ct:\pw_work\pwsdat\colemm\0169788\78172	sht_schedules.dgn	DRAWN -	REVISED -					57	.	Jefferson	422	5
PLOT SCALE = 50.0000' / IN.	CHECKED -	REVISED -	REVISED -		SCALE: SHEET NO. OF SHEETS STA. TO STA.			CONTRACT NO. 78172				
PLOT DATE = 2/25/2011	DATE -	REVISED -	REVISED -		ILLINOIS FED. AID PROJECT (41-2-1,41-3,41-3-1)R-1							

## SUMMARY OF QUANTITIES

CODE NUMBER	ITEM DESCRIPTION	UNIT	TOTAL QUANTITY	JEFFERSON ROADWAY URBAN	JEFFERSON BRIDGE URBAN
				90% FED 10% STATE	041-0012 (NB) 041-0013 (SB) 90% FED/10% ST
	CONSTRUCTION TYPE CODE			0003	0014
* 25000400	NITROGEN FERTILIZER NUTRIENT	POUND	7,900	7,900	
* 25000500	PHOSPHORUS FERTILIZER NUTRIENT	POUND	3,950	3,950	
* 25000600	POTASSIUM FERTILIZER NUTRIENT	POUND	3,950	3,950	
* 25000700	AGRICULTURAL GROUND LIMESTONE	TON	88	88	
* 25100115	MULCH, METHOD 2	ACRE	88	88	
* 25100630	EROSION CONTROL BLANKET	SQ YD	26,600	26,600	
28000250	TEMPORARY EROSION CONTROL SEEDING	POUND	13,200	13,200	
28000305	TEMPORARY DITCH CHECKS	FOOT	1,210	1,210	
28000400	PERIMETER EROSION BARRIER	FOOT	11,850	11,850	
28000500	INLET AND PIPE PROTECTION	EACH	20	20	
28100707	STONE DUMPED RIPRAP, CLASS A4	SQ YD	166	166	
30200650	PROCESSING MODIFIED SOIL 12"	SQ YD	151,752	151,752	
30201500	LIME	TON	4,506.9	4,506.9	
X3120005	STABILIZED SUBBASE - HOT-MIX ASPHALT (VARIABLE DEPTH)	TON	17,933	17,933	
31200500	STABILIZED SUBBASE HOT-MIX ASPHALT, 4"	SQ YD	142,594	142,594	
40600115	POLYMERIZED BITUMINOUS MATERIALS (PRIME COAT)	GALLON	24	24	
40600990	TEMPORARY RAMP	SQ YD	478	478	
40603575	POLYMERIZED HOT-MIX ASPHALT SURFACE COURSE, MIX "E", N105	TON	29	29	
40800010	BITUMINOUS MATERIALS (PRIME COAT)	GALLON	2,976	2,976	
42000501	PORTLAND CEMENT CONCRETE PAVEMENT 10" (JOINTED)	SQ YD	3,304	3,304	
42000511	PORTLAND CEMENT CONCRETE PAVEMENT 10 1/2" (JOINTED)	SQ YD	11,378	11,378	
42001200	PAVEMENT FABRIC	SQ YD	1,705	1,705	
42001300	PROTECTIVE COAT	SQ YD	14,682	14,682	
42100300	CONTINUOUSLY REINFORCED PORTLAND CEMENT CONCRETE PAVEMENT 10"	SQ YD	27,223	27,223	
42100310	CONTINUOUSLY REINFORCED PORTLAND CEMENT CONCRETE PAVEMENT 10 1/2"	SQ YD	72,869	72,869	
42100340	CONTINUOUSLY REINFORCED PORTLAND CEMENT CONCRETE PAVEMENT 12"	SQ YD	46,552	46,552	
42100615	PAVEMENT REINFORCEMENT	SQ YD	146,644	146,644	
42101300	PROTECTIVE COAT	SQ YD	146,448	146,448	
42101436	LUG SYSTEM COMPLETE 36'	EACH	8	8	
44000100	PAVEMENT REMOVAL	SQ YD	64,461	64,461	
44000163	HOT-MIX ASPHALT SURFACE REMOVAL, 3 1/2"	SQ YD	94,169	94,169	
44004250	PAVED SHOULDER REMOVAL	SQ YD	52,153	48,949	3,204
44200998	CLASS B PATCHES, TYPE III, 12 INCH	SQ YD	208	208	
44201000	CLASS B PATCHES, TYPE IV, 12 INCH	SQ YD	1,497	1,497	
44201299	DOWEL BARS 1 1/2"	EACH	1,064	1,064	
44213000	PATCHING REINFORCEMENT	SQ YD	10,586	10,586	
44213200	SAW CUTS	FOOT	28,267	28,267	

\*SPECIALTY ITEM

▲ REVISED 4/12/11 ▲ REVISED 4/15/11

FILE NAME =	USER NAME = rollvr	DESIGNED -	REVISED -	<b>STATE OF ILLINOIS DEPARTMENT OF TRANSPORTATION</b>	<b>SUMMARY OF QUANTITIES</b>	F.A.I. RTE.	SECTION	COUNTY	TOTAL SHEETS	SHEET NO.
et\pw\work\p\dot\rollvr\d0169788\78172	ght_schedules.dgn	DRAWN -	REVISED -			57	.	Jefferson	422	6
	PLOT SCALE = 50.0000' / IN.	CHECKED -	REVISED -							
	PLOT DATE = 2/23/2011	DATE -	REVISED -							
					SCALE:	SHEET NO. OF SHEETS STA.		TO STA.		
					ILLINOIS FED. AID PROJECT					

# SUMMARY OF QUANTITIES

CODE NUMBER	ITEM DESCRIPTION	UNIT	TOTAL QUANTITY	JEFFERSON ROADWAY URBAN	JEFFERSON BRIDGE URBAN
				90% FED 10% STATE	041-0012 (NB) 041-0013 (SB) 90% FED/10% ST
CONSTRUCTION TYPE CODE				0003	0014
60500060	REMOVING INLETS	EACH	6	6	
* 63000001	STEEL PLATE BEAM GUARD RAIL, TYPE A, 6 FOOT POSTS	FOOT	8,223	8,223	
* 63100045	TRAFFIC BARRIER TERMINAL, TYPE 2	EACH	9	9	
* 63100085	TRAFFIC BARRIER TERMINAL, TYPE 6	EACH	8	4	4
* 63100167	TRAFFIC BARRIER TERMINAL, TYPE 1 (SPECIAL) TANGENT	EACH	26	26	
63200310	GUARDRAIL REMOVAL	FOOT	5,632	5,459	173
63300900	VERTICAL ADJUSTMENT OF GUARDRAIL	FOOT	516	516	
63500105	DELINEATORS	EACH	267	267	
64200105	SHOULDER RUMBLE STRIPS	FOOT	68,630	68,630	
67000400	ENGINEER'S FIELD OFFICE, TYPE A	CAL MO	31	31	
67100100	MOBILIZATION	L SUM	1	1	
70100205	TRAFFIC CONTROL AND PROTECTION, STANDARD 701401	EACH	8		8
70100207	TRAFFIC CONTROL AND PROTECTION, STANDARD 701402	EACH	4		4
70100420	TRAFFIC CONTROL AND PROTECTION, STANDARD 701411	EACH	8	8	
70100820	TRAFFIC CONTROL AND PROTECTION, STANDARD 701451	L SUM	1	1	
70100825	TRAFFIC CONTROL AND PROTECTION, STANDARD 701456	L SUM	1	1	
70106800	CHANGEABLE MESSAGE SIGN	CAL MO	250	250	
* 80300100	LOCATING UNDERGROUND CABLE	FOOT	9,600	9,600	
* 81603035	UNIT DUCT, 600V, 2-1C NO. 6, 1/C NO. 6 GROUND, (XLP-TYPE USE), 1" DIA. POLYETHYLENE	FOOT	13,788	13,788	
* 84400105	RELOCATE EXISTING LIGHTING UNIT	EACH	33	33	
* 82102400	LUMINAIRE, SODIUM VAPOR, HORIZONTAL MOUNT, 400 WATT	EACH	43	43	
* 83010600	LIGHT POLE, ALUMINUM, 50FT. M.H., 15FT. MAST ARM	EACH	43	43	
* 83600300	LIGHT POLE FOUNDATION, 30" DIAMETER	FOOT	608	608	
* 83800205	BREAKAWAY DEVICE, TRANSFORMER BASE, 15 INCH BOLT CIRCLE	EACH	76	76	
* 70300520	PAVEMENT MARKING TAPE, TYPE III 4"	FOOT	341,581	315,476	26,105
70301000	WORK ZONE PAVEMENT MARKING REMOVAL	SQ FT	113,860	113,860	
70400100	TEMPORARY CONCRETE BARRIER	FOOT	21,737.5	21,737.5	
70400200	RELOCATE TEMPORARY CONCRETE BARRIER	FOOT	42,325	40,325	2,000
* 78004210	PREFORMED PLASTIC PAVEMENT MARKING, TYPE B - INLAID- LINE 4"	FOOT	83,873	83,873	
* 78004230	PREFORMED PLASTIC PAVEMENT MARKING, TYPE B -INLAID- LINE 6"	FOOT	25,043	25,043	
* 78004240	PREFORMED PLASTIC PAVEMENT MARKING, TYPE B -INLAID- LINE 8"	FOOT	7,194	7,194	
* 78004250	PREFORMED PLASTIC PAVEMENT MARKING, TYPE B -INLAID- LINE 12"	FOOT	281	281	
* 78100100	RAISED REFLECTIVE PAVEMENT MARKER	EACH	760	760	
* 78100200	TEMPORARY RAISED REFLECTIVE PAVEMENT MARKER	EACH	844	844	
* 78200420	GUARDRAIL MARKERS, TYPE B	EACH	102	102	
* 78201000	TERMINAL MARKER - DIRECT APPLIED	EACH	25	25	
78300100	PAVEMENT MARKING REMOVAL	SQ FT	27,793	26,343	1,450
78300200	RAISED REFLECTIVE PAVEMENT MARKER REMOVAL	EACH	434	434	
81012800	CONDUIT IN TRENCH, 3" DIA., PVC	FOOT	100	100	
81012400	CONDUIT IN TRENCH, 1 1/4" PVC	FOOT	112	112	
81021350	CONDUIT PUSHED, 3" DIA., PVC	FOOT	112	112	
81400200	HEAVY-DUTY HANDHOLE	EACH	4	4	
* 81702100	ELECTRIC CABLE IN CONDUIT, 600V (XLP-TYPE USE) 1/C NO. 12	FOOT	210	210	
* 81900200	TRENCH AND BACKFILL FOR ELECTRICAL WORK	FOOT	13,530	13,530	
* 86300300	CONTROLLER CABINET TYPE III	EACH	1	1	
* 87800215	CONCRETE FOUNDATION, TYPE D	EACH	1	1	
* 88600100	DETECTOR LOOP, TYPE I	FOOT	528	528	

\*SPECIALTY ITEM

REVIS 4/15/11

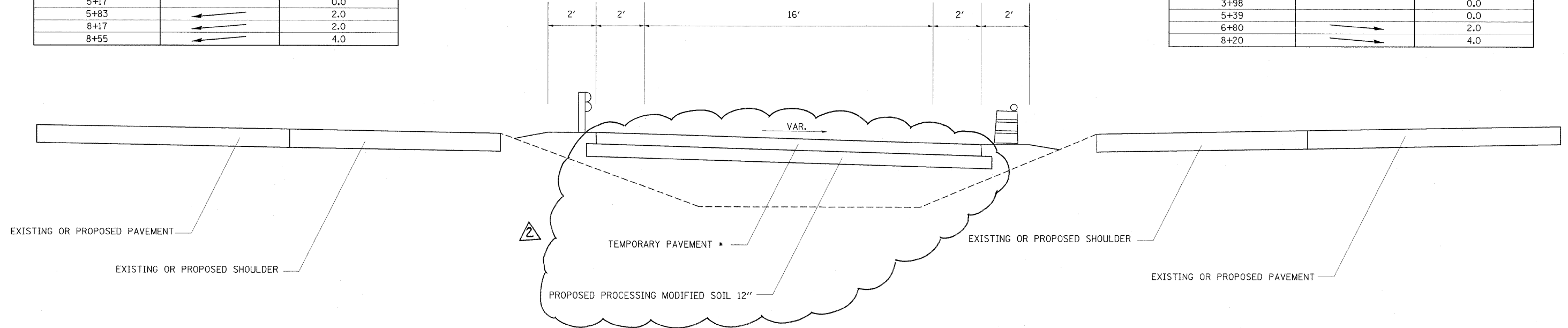
FILE NAME =	USER NAME = colemm	DESIGNED -	REVISED -	<b>STATE OF ILLINOIS DEPARTMENT OF TRANSPORTATION</b>	<b>SUMMARY OF QUANTITIES</b>	F.A.I. RTE.	SECTION	COUNTY	TOTAL SHEETS	SHEET NO.
ct:\pw_work\pwidot\colemm\0169788\78172	sht_schedules.dgn	DRAWN -	REVISED -			57	.	Jefferson	422	8
	PLOT SCALE = 50,0000 ' / IN.	CHECKED -	REVISED -							
	PLOT DATE = 2/25/2011	DATE -	REVISED -							
						SCALE:	SHEET NO.	OF	SHEETS	STA.
										TO STA.
						ILLINOIS FED. AID PROJECT CONTRACT NO. 78172				

NORTH NB XOVER (XOVER 2)

STATION	DIRECTION	SLOPE %
3+81	→	4.0
4+49	→	2.0
5+17	→	0.0
5+83	←	2.0
8+17	←	2.0
8+55	←	4.0

SOUTH NB XOVER (XOVER 4)

STATION	DIRECTION	SLOPE %
1+90	←	4.0
2+94	←	2.0
3+98	←	0.0
5+39	←	0.0
6+80	←	2.0
8+20	←	4.0



\*TEMPORARY PAVEMENT MAY BE 10" P.C.C. OR 12" H.M.A. BINDER COURSE

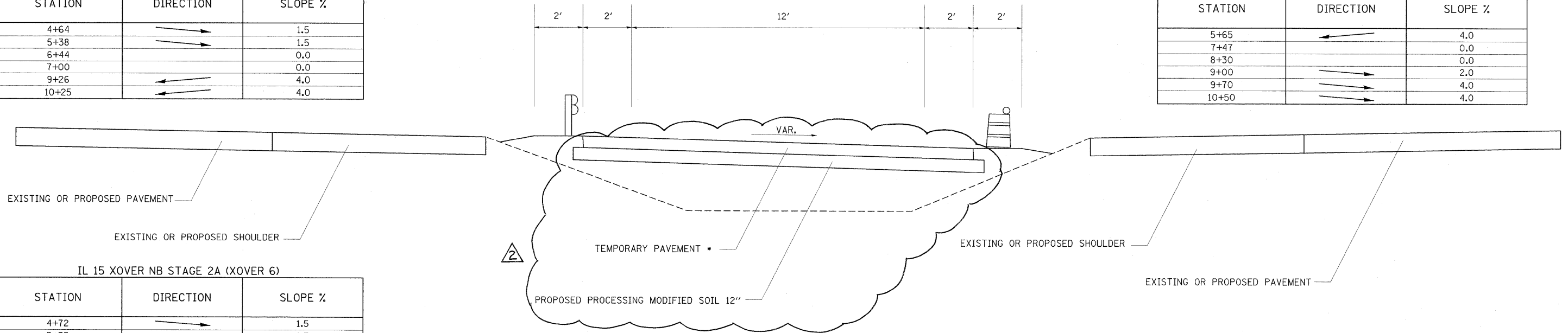
TO BE USED:  
STAGE 2 NB CROSSOVERS  
(XOVER2 & XOVER4)

IL 15 XOVER NB STAGE 2 (XOVER 5)

STATION	DIRECTION	SLOPE %
4+64	→	1.5
5+38	→	1.5
6+44	→	0.0
7+00	→	0.0
9+26	←	4.0
10+25	←	4.0

IL 15 XOVER SB STAGE 3 (XOVER 7)

STATION	DIRECTION	SLOPE %
5+65	←	4.0
7+47	←	0.0
8+30	←	0.0
9+00	←	2.0
9+70	←	4.0
10+50	←	4.0



EXISTING OR PROPOSED PAVEMENT  
EXISTING OR PROPOSED SHOULDER

EXISTING OR PROPOSED SHOULDER  
EXISTING OR PROPOSED PAVEMENT

IL 15 XOVER NB STAGE 2A (XOVER 6)

STATION	DIRECTION	SLOPE %
4+72	→	1.5
5+35	→	1.5
5+47	→	0.0
6+30	→	0.0
7+78	←	2.0
9+10	←	4.0

IL 15 XOVER SB STAGE 3A (XOVER 8)

STATION	DIRECTION	SLOPE %
4+04	→	4.0
4+76	→	0.0
5+49	→	4.0

TO BE USED:  
IL 15 EXIT RAMP AND ENTRANCE RAMP CROSSOVERS  
(XOVER5, XOVER6, XOVER7, XOVER8)

\*TEMPORARY PAVEMENT MAY BE 10" P.C.C. OR 12" H.M.A. BINDER COURSE

REVISÉ

4/15/11

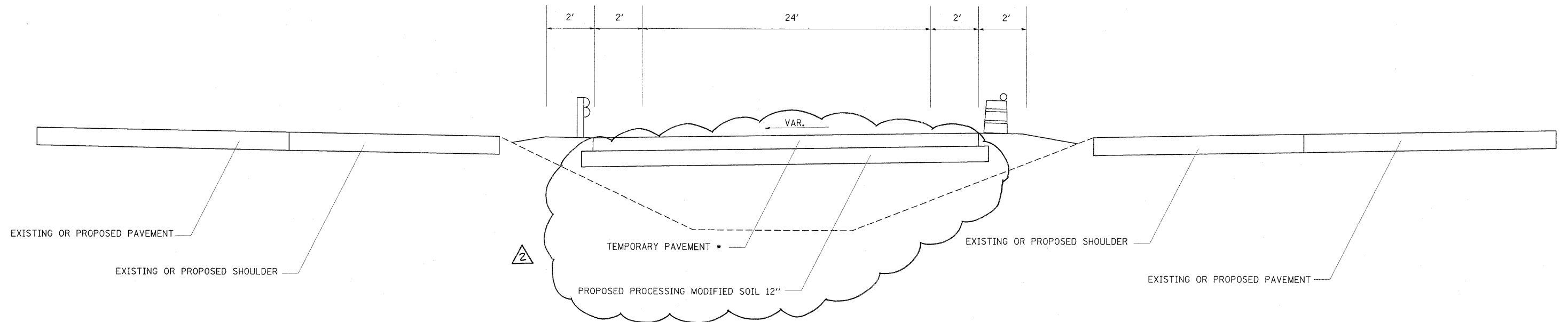
FILE NAME =	USER NAME = Gary Davis	DESIGNED =	REVISED =	<b>STATE OF ILLINOIS DEPARTMENT OF TRANSPORTATION</b>	<b>CROSSOVER TYPICAL SECTION</b>			F.A.I. RTE. 57	SECTION *	COUNTY Jefferson	TOTAL SHEETS 422	SHEET NO. 15			
C:\Documents and Settings\gdavis\Local Settings\Temporary Internet Files\Content.Outline\DRAWN55CB\plan-revisions.dgn	DRAWN = SSCB\plan-revisions.dgn	REVISÉ =	REVISÉ =					SCALE:	SHEET NO.	OF	SHEETS	STA.	TO STA.	CONTRACT NO. 78172	ILLINOIS FED. AID PROJECT
PLOT SCALE = 50,000 / IN.	CHECKED =	REVISÉ =	REVISÉ =												
PLOT DATE = 4/14/2011	DATE	REVISÉ =	REVISÉ =												

NORTH SB XOVER (XOVER 1)

STATION	DIRECTION	SLOPE %
0+67	→	4.0
1+60	→	2.0
3+95	→	2.0
4+88	→	0.0
5+88	←	2.0
7+25	←	2.0

SOUTH SB XOVER (XOVER 3)

STATION	DIRECTION	SLOPE %
1+00	→	4.0
2+62	→	2.0
4+25	→	0.0
5+65	→	0.0
6+88	←	2.0
8+10	←	4.0



TO BE USED:  
STAGE 3 SB CROSSOVERS  
(XOVER1 & XOVER3)

\*TEMPORARY PAVEMENT  
10" P.C.C./12" H.M.A.

\*TEMPORARY PAVEMENT MAY BE 10" P.C.C. OR 12" H.M.A. BINDER COURSE

2 REVISÉD

4/15/11

FILE NAME =	USER NAME = Gary Davis	DESIGNED -	REVISED -	<b>STATE OF ILLINOIS DEPARTMENT OF TRANSPORTATION</b>	<b>CROSSOVER TYPICAL SECTION</b>	F.A.I. RTE.	SECTION	COUNTY	TOTAL SHEETS	SHEET NO.	
C:\Documents and Settings\gdavis\Local Settings\Temporary Internet Files\Content.Oute	DRAWN: S5EB\plan-revisions.dgn	CHECKED -	REVISED -			57	*	Jefferson	422	16	
PLOT SCALE = 50.0000' / IN.		DATE -	REVISED -			CONTRACT NO. 78172		ILLINOIS FED. AID PROJECT			
PLOT DATE = 4/14/2011						SCALE:	SHEET NO. OF SHEETS	STA. TO STA.			

# TEMPORARY PAVEMENT MARKING SCHEDULE

LOCATION STATION TO STATION	PAVEMENT MARKING TAPE, TYPE III, 4"			WORK ZONE PAVEMENT MARKING REMOVAL	TEMPORARY RAISED REFLECTIVE PAVEMENT MARKER
	LINE 4"				
	SKIP DASH WHITE FOOT	SOLID WHITE FOOT	SOLID YELLOW FOOT		
STAGE I					
SB 629+50.0 TO 636+60.0		1420.0	710.0	710.0	9
SB 636+60.0 TO 828+25.0	4791.3	19165.0	19165.0	14373.8	240
SB 828+25.0 TO 839+50.0		2250.0	1125.0	1125.0	14
SB 839+50.0 TO 856+00.0		1650.0	1650.0	1100.0	
STAGE II					
NB 613+50.0 TO 621+25.0		775.0	775.0	516.7	
NB 621+25.0 TO 628+30.0		1410.0	705.0	705.0	9
NB 628+30.0 TO 629+30.0		100.0	100.0	66.7	
NB 629+30.0 TO 634+10.0		480.0		160.0	
NB 634+10.0 TO 822+50.0		18840.0	18840.0	12560.0	
NB 746+00.0 TO 765+00.0		1900.0	1900.0	1266.7	
NB 771+00.0 TO 822+50.0		5150.0	5150.0	3433.3	
STAGE IIA					
NB 752+00.0 TO 765+00.0		1300.0	1300.0	866.7	
NB 772+00.0 TO 822+50.0		5050.0	5050.0	3366.7	
STAGE III					
NB 619+50.0 TO 621+10.0		160.0		53.3	
NB 626+00.0 TO 821+00.0	4875.0	19500.0	19500.0	14625.0	244
NB 701+00.0 TO 707+00.0		600.0	600.0	400.0	
SB 634+60.0 TO 839+50.0	5122.5	20490.0	20490.0	15367.5	281
SB 753+00.0 TO 772+30.0		1930.0	1930.0	1286.7	
SB 781+50.0 TO 826+00.0		4450.0	4450.0	2966.7	
STAGE IIIA					
SB 757+00.0 TO 772+30.0		1530.0	1530.0	1020.0	
SB 781+50.0 TO 825+00.0		4350.0	4350.0	2900.0	
STAGE IV					
NB 627+00.0 TO 817+75.0		19075.0	19075.0	12716.7	
SB 636+75.0 TO 839+50.0		20275.0	20275.0	13516.7	
STAGE V					
SB 826+90.0 TO 839+50.0	315.0	1260.0	1260.0	945.0	16
SB 839+50.0 TO 856+00.0		1650.0	1650.0	1100.0	
NB 805+03.0 TO 815+03.0		2000.3		666.8	
NB 815+03.0 TO 820+03.0		500.0	500.0	333.3	
NB 820+03.0 TO 828+33.0		830.0	830.0	553.3	
NB 824+39.0 TO 828+33.0		788.0		262.7	2
NB 828+33.0 TO 833+77.0		1088.0	544.0	544.0	7
STAGE VI					
SB 826+90.0 TO 839+50.0	315.0	1260.0	1260.0	945.0	16
SB 839+50.0 TO 856+00.0		1650.0	1650.0	1100.0	
NB 805+03.0 TO 815+03.0		2000.3		666.8	
NB 815+03.0 TO 828+33.0		2660.0		886.7	
NB 825+04.0 TO 828+33.0		329.0	329.0	219.3	
NB 828+33.0 TO 830+00.0		334.0	334.0	222.7	5
NB 830+00.0 TO 833+12.0		624.0	312.0	312.0	1
TOTALS	15,419	168,824	157,339	113,860	844
		341,581			

## EMERGENCY MEDIAN CROSSOVER

LOCATION	AGGREGATE SHOULDERS TYPE A, 8" *
STA.	SY
665+50.00	192
673+00.00	186
683+50.00	265
691+80.00	299
704+00.00	306
721+50.00	300
737+50.00	305
749+30.00	305
761+45.00	309
776+40.00	316
785+75.00	313
801+00.00	313
TOTAL	3409

SEE PAVEMENT SCHEDULE FOR ADDITIONAL QUANTITY

## TEMPORARY PAVEMENT SCHEDULE

LOCATION	TEMPORARY PAVEMENT	PROCESS MODIFIED SOIL 12" *	LIME*	PAVEMENT REMOVAL
	SY	SY	TON	SY
SOUTH SB XOVER (XOVER 3)	1412	2130	63	1412
SOUTH NB XOVER (XOVER 4)	1034	1330	40	1034
IL 15 XOVER NB STAGE 2 (XOVER 5)	895	935	28	895
IL 15 XOVER NB STAGE 2A (XOVER 6)	629	730	22	629
IL 15 XOVER SB STAGE 3 (XOVER 7)	697	808	24	697
IL 15 XOVER SB STAGE 3A (XOVER 8)	697	242	7	697
NORTH SB XOVER (XOVER 1)	2270	1974	59	2270
NORTH NB XOVER (XOVER 2)	1222	1001	30	1222
TOTAL	8856	9150	272	8856

SEE PAVEMENT SCHEDULE FOR ADDITIONAL QUANTITY

## EMERGENCY MEDIAN CROSSOVER

LOCATION	AGGREGATE SHOULDERS TYPE A, 8" *
STA.	SY
665+50.00	192
673+00.00	186
683+50.00	265
691+80.00	299
704+00.00	306
721+50.00	300
737+50.00	305
749+30.00	305
761+45.00	309
776+40.00	316
785+75.00	313
801+00.00	313
TOTAL	3409

SEE PAVEMENT SCHEDULE FOR ADDITIONAL QUANTITY

## LIGHTING SCHEDULE

LOCATION STATION TO STATION			RELOCATE EXISTING LIGHTING UNIT	LIGHT POLE FOUNDATION, 30" DIAMETER	BREAKAWAY DEVICE, TRANSFORMER BASE, 15" BOLT CIRCLE	LIGHT POLE, ALUMINUM, 50 FT. M. H., 15FT. MAST ARM	LUMINAIRE, SODIUM VAPOR, HORIZONTAL MOUNT, 400 WATT	TRENCH AND BACKFILL FOR ELECTRICAL WORK	UNIT DUCT, 600V, 2-1C NO. 6, 1/C NO. 6 GROUND, (XLP-TYPE USE), 1" DIA. POLYETHYLENE
STA.	TO	STA.	EACH	FOOT	EACH	EACH	EACH	FOOT	FOOT
697+50 LT	TO	746+50 LT	17	136	17				
701+00 RT	TO	747+00 RT	15	120	15				
750+00 LT	TO	817+00 LT		168	21	21		6710	6836
751+50 RT	TO	809+00 RT		144	18	18		5570	5678
VETERAN'S RAMP D 603+00 RT			1	8	1				
IL 15 RAMP A 11+50 LT				8	1	1	300		306
IL 15 RAMP C 1+65 RT				8	1	1	300		306
IL 15 RAMP D 2+85 LT				8	1	1	300		306
IL 15 RAMP D 5+85 LT				8	1	1	350		356
TOTAL			33	608	76	43	43	13530	13788

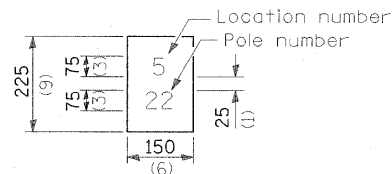
REVISED

4/15/11

FILE NAME =	USER NAME = Gary Davis	DESIGNED -	REVISED -	<b>STATE OF ILLINOIS DEPARTMENT OF TRANSPORTATION</b>	<b>TEMPORARY CONCRETE BARRIER, TEMPORARY PAVEMENT &amp; EMERGENCY MEDIAN CROSSOVER SCHEDULES</b>	F.A.I. RTE.	SECTION	COUNTY	TOTAL SHEETS	SHEET NO.	
C:\Documents and Settings\gdavis\Local Settings\Temporary Internet Files\Content.Outo	DRAWN: GSEB\plan-revisions.dgn	CHECKED -	REVISED -			57	*	Jefferson	422	24	
PLOT SCALE = 50.0000' / IN.	DATE	REVISIONS				CONTRACT NO. 78172					
PLOT DATE = 4/14/2011						ILLINOIS FED. AID PROJECT					

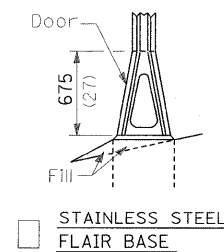
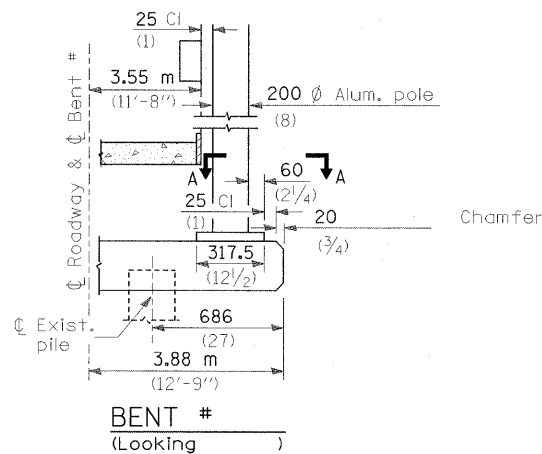
"Install and orient arm bracket over pole tenon and firmly hand tighten the two set screws. Use third hole in arm bracket as a guide to drill a 8.3 (3/4) diameter hole through tenon. Install and tighten self-tapping screw. Tighten set screws an additional (1/4 to 3/8) turn with hex key (not provided). Install locknuts on set screws if threaded projection allows."

Pole shall meet AASHTO Standard Specifications for 128.72 km (80 mph) wind loading and 40.82 kg (90 lb.), .37 m<sup>2</sup> (4.0 sq. ft.) E.P.A. luminaire.

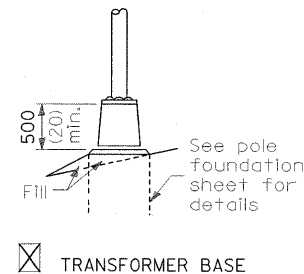


The contractor shall furnish and install a light pole identification of each new light pole, as shown above, incidental to the respective light pole pay item. The numerals shall be 75 (3) series "D", black, screened on silver-white type B pressure sensitive reflective sheeting conforming to the requirements of section T602.01 of the Standard Specifications for Traffic Control Items. The numerals shall conform to the FHWA "Standard Alphabets for Highway Signs".

The light pole identification shall be applied to sign base material as specified in section 1085.05 of the Standard Specifications, approximately 180 (7) above the adjacent pavement grade visible to approaching traffic in accordance with Highway Standard 2319.

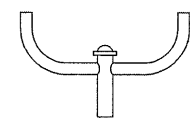


STAINLESS STEEL FLAIR BASE

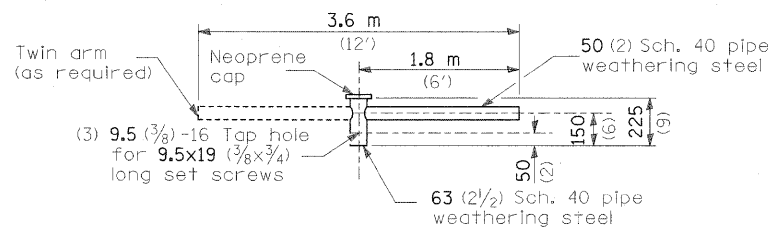


TRANSFORMER BASE

FRANGIBLE

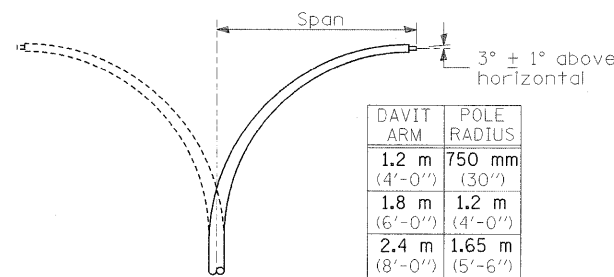


TWIN TENON



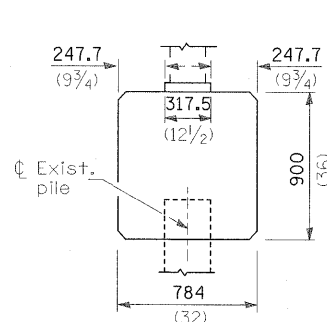
TENON MOUNT BRACKET ARM

NOTE: Single or twin arm assembly shall be tilted 3° above horizontal.

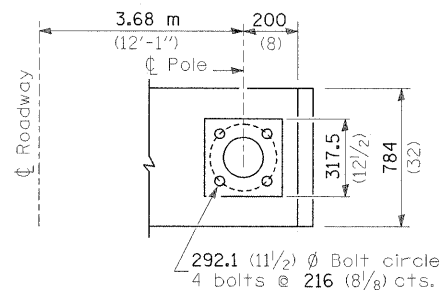


DAVIT ARM  
 DAVIT ARM-TWIN

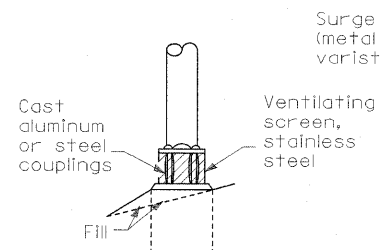
DAVIT ARM	POLE RADIUS
1.2 m (4'-0")	750 mm (30")
1.8 m (6'-0")	1.2 m (4'-0")
2.4 m (8'-0")	1.65 m (5'-6")
3.6 m (12'-0")	1.65 m (5'-6")



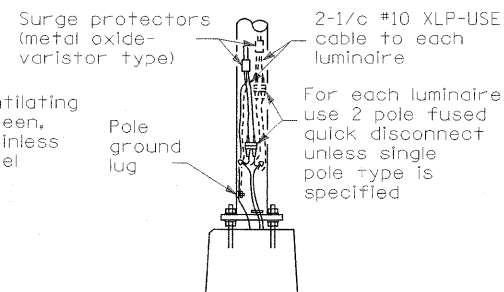
BRIDGE PIER MOUNT



SECTION A-A



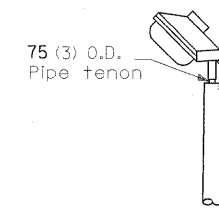
BREAKAWAY COUPLING



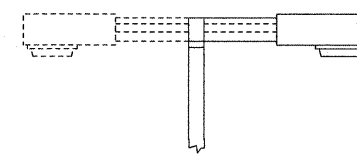
ANCHOR

METAL OR  CONCRETE

Details for underground distribution if required

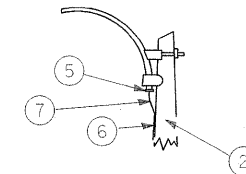


TENON

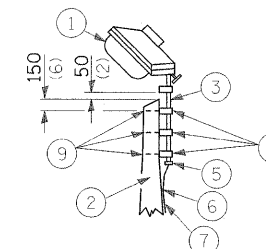


SHORT BRACKET

SHORT BRACKET - TWIN



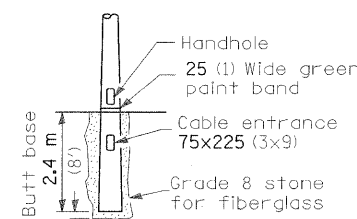
MAST ARM



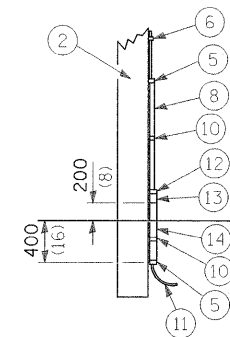
TENON

- ① Luminaire
- ② Wood pole, class 3 or better
- ③ 63 (2 1/2) Galv. steel conduit
- ④ Single offset pole band
- ⑤ Conduit bushing
- ⑥ Cable clamps on 600 (24) centers
- ⑦ 2/c #12 Type use cable
- ⑧ 25 (1) Galv. steel conduit 3.0 m (10') in length

- ⑨ 16 (5/8) Ø hot dipped galvanized bolt with flat washer & locknut (3 req'd)
- ⑩ Conduit clamps on 900 (36) centers
- ⑪ Unit duct
- ⑫ Threaded reducer
- ⑬ "C" Conduit, threaded
- ⑭ 40 (1 1/2) Galv. steel conduit for 1 unit duct or 75 (3) galv. steel conduit for 2 or 3 unit ducts.



BUTT BASE



POLE, WOOD

POLE LENGTH	DEPTH IN GROUND
19.8 m (65')	3.6 m (12')
18.0 m (60')	3.0 m (10')
16.8 m (55')	2.7 m (9')
16.0 m (50')	2.4 m (8')
13.7 m (45')	2.1 m (7')
12.0 m (40')	2.0 m (6.5')
10.7 m (35')	1.8 m (6')
9.0 m (30')	1.7 m (5.5')

All dimensions are in millimeters (Inches) unless otherwise shown.

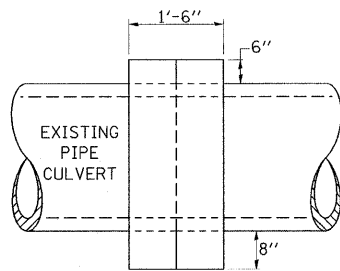
△ SHEET ADDED 4/15/11

FILE NAME =	USER NAME = Gary Davis	DESIGNED -	REVISED -	<b>STATE OF ILLINOIS DEPARTMENT OF TRANSPORTATION</b>	<b>POLE STANDARDS</b>				F.A.I. RTE. =	SECTION	COUNTY	TOTAL SHEETS	SHEET NO.
C:\Documents and Settings\gdavis\Local Settings\Temporary Internet Files\Content.Outo	Settings\Temporary Internet Files\Content.Outo	DRAWN: 55EB\plan-revisions.dgn	REVISED -		57	(42-2-1,41-3,41-3-1)R-1	JEFFERSON	422	155A				
PLOT SCALE = 50.0000 / IN.		CHECKED -	REVISED -		CONTRACT NO. 78172								
PLOT DATE = 4/14/2011		DATE -	REVISED -		SCALE: 50	SHEET NO. OF SHEETS	STA. TO STA.	ILLINOIS FED. AID PROJECT					

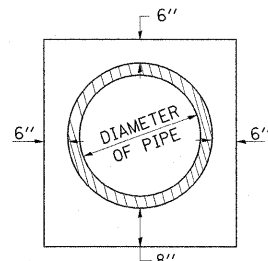


### DETAILS OF CONCRETE COLLAR PIPE TO PIPE

PIPE TO PIPE



SIDE VIEW



END VIEW

#### TABULATION

DIAMETER OF PIPE	CL SI CONC CU YDS EST
12"	0.24
15"	0.29
18"	0.32
24"	0.44
30"	0.56
36"	0.66
42"	0.80
48"	0.93
54"	1.07
60"	1.22
72"	1.55

THE CONCRETE COLLAR SHALL BE PAID FOR AT THE CONTRACT UNIT PRICE PER CUBIC YARD FOR CONCRETE COLLAR, AS SHOWN ON THE PLANS, WHICH PRICE SHALL INCLUDE THE REMOVAL OF SUCH PORTIONS THE EXISTING HEADWALLS AS MAY BE REQUIRED.

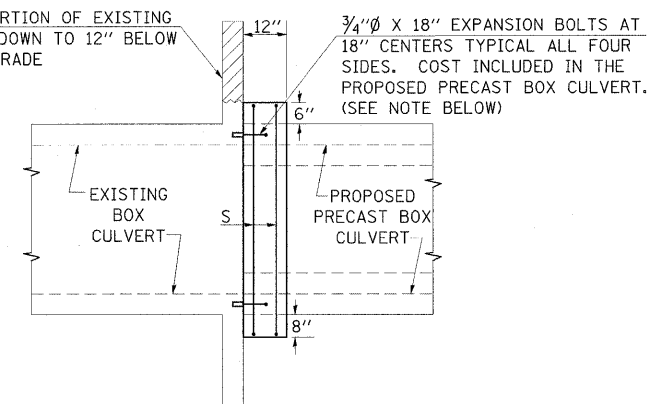
CLASS SI CONCRETE SHALL BE USED THROUGHOUT.

REVISIONS	
DRAWN	7-13-90
REVISED	8-22-94
REVISED	3-26-08
REVISED	

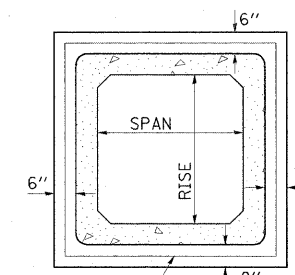
STD. 9-79

### DETAILS OF CONCRETE COLLAR FOR PRECAST BOX CULVERT

REMOVE PORTION OF EXISTING HEADWALL DOWN TO 12" BELOW FINISHED GRADE



SIDE VIEW



END VIEW

2 - #5 S BARS TYPICAL  
COST INCLUDED IN THE PROPOSED PRECAST BOX CULVERT.

#### TABULATION

(FOR INFORMATION PURPOSES ONLY)

SPAN X RISE	CLASS SI CONC. CU. YD. (EST.)
2' X 2'	0.26
3' X 2'	0.30
3' X 3'	0.34
4' X 2'	0.36
4' X 3'	0.39
4' X 4'	0.43
5' X 2'	0.41
5' X 3'	0.45
5' X 4'	0.49
6' X 2'	0.47
6' X 3'	0.51
6' X 4'	0.54

THE CONCRETE COLLAR SHALL BE CONSIDERED INCLUDED IN PRECAST CONCRETE BOX CULVERT, WHICH PRICE SHALL INCLUDE THE REMOVAL OF SUCH PORTIONS OF THE EXISTING HEADWALLS AS MAY BE REQUIRED. CLASS SI CONCRETE SHALL BE USED THROUGHOUT.

#### NOTE:

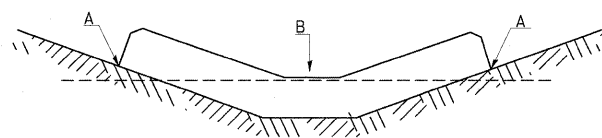
ANCHOR BOLTS, MEETING THE REQUIREMENTS OF ARTICLE 1006.09 OF THE STANDARD SPECIFICATIONS, SHALL EXTEND A MINIMUM OF 9 INCHES INTO THE NEW CONCRETE. EXPANSION SHIELDS SHALL PROVIDE A MINIMUM CERTIFIED PROOF LOAD OF 4080 POUNDS.

REVISIONS		
DRAWN	8-15-89	REVISED 12-17-01
REVISED	2-15-90	REVISED 3-26-08
REVISED	8-10-90	REVISED
REVISED	8-19-94	REVISED

STD. 9-45

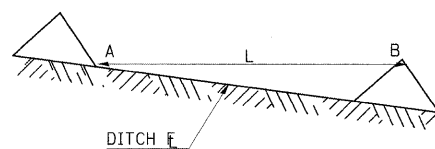
### TEMPORARY DITCH CHECKS

#### PLACEMENT OF TEMPORARY DITCH CHECK IN DRAINAGE WAY



POINTS A SHOULD BE HIGHER THAN POINT B

#### SPACING BETWEEN TEMPORARY DITCH CHECKS



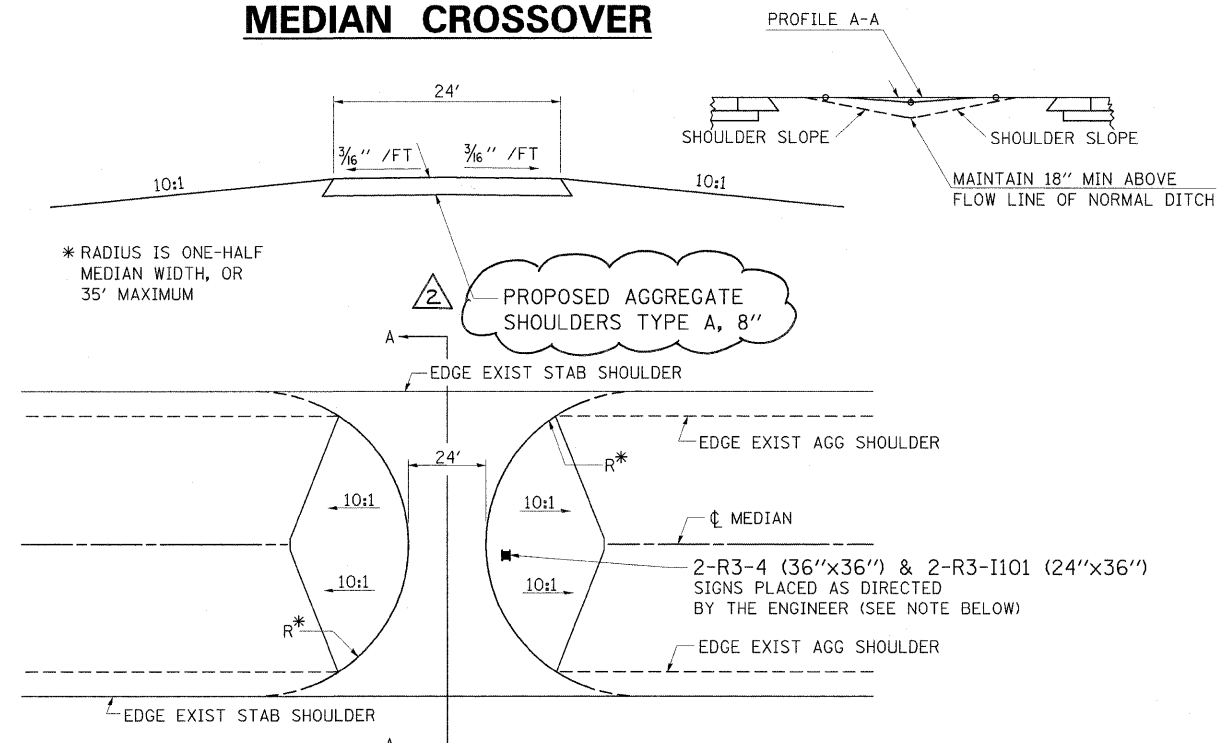
L = THE DISTANCE SUCH THAT POINTS A AND B ARE OF EQUAL ELEVATION

B = THE LOW POINT IN CENTER OF CHECK

REVISIONS	
DRAWN	9-01-99
REVISED	10-3-01
RESIZED	5-8-08
REVISED	05-04-10

STD. 9-108

### DETAIL OF PROPOSED EMERGENCY MEDIAN CROSSOVER



#### TO BE USED:

- 665+50
- 673+00
- 683+50
- 691+80
- 704+00
- 721+50
- 737+50
- 749+30
- 761+45
- 776+40
- 785+75
- 801+00

#### NOTE:

THE PROPOSED CROSSOVER SURFACE SHALL BE BUTTED TO THE EDGE OF THE EXISTING STABILIZED SHOULDER.

#### NOTE:

THE SIGN ASSEMBLY FOR EACH LOCATION SHALL BE INCLUDED IN THE COST OF AGGREGATE SHOULDERS, TYPE A 8"

REVISIONED 4/15/11

FILE NAME =	USER NAME = Gary Davis	DESIGNED =	REVISED =	STATE OF ILLINOIS DEPARTMENT OF TRANSPORTATION	CONCRETE COLLAR PIPE TO PIPE, CONCRETE COLLAR FOR PRECAST BOX CULVERT, TEMP DITCH CHECKS, AND PROPOSED EMERGENCY MEDIAN CROSSOVER DETAILS	F.A.I. RTE. 57	SECTION =	COUNTY = Jefferson	TOTAL SHEETS = 422	SHEET NO. = 155
C:\Documents and Settings\gdavis\Local Settings\Temporary Internet Files\Content.Outline\65E8B76E\plan-revisions.dgn		DRAWN =	REVISED =		SCALE: SHEET NO. OF SHEETS STA. TO STA.				CONTRACT NO. 78172	
PLOT SCALE = 50.0000" / IN.		CHECKED =	REVISED =							
PLOT DATE = 4/14/2011		DATE =	REVISED =							