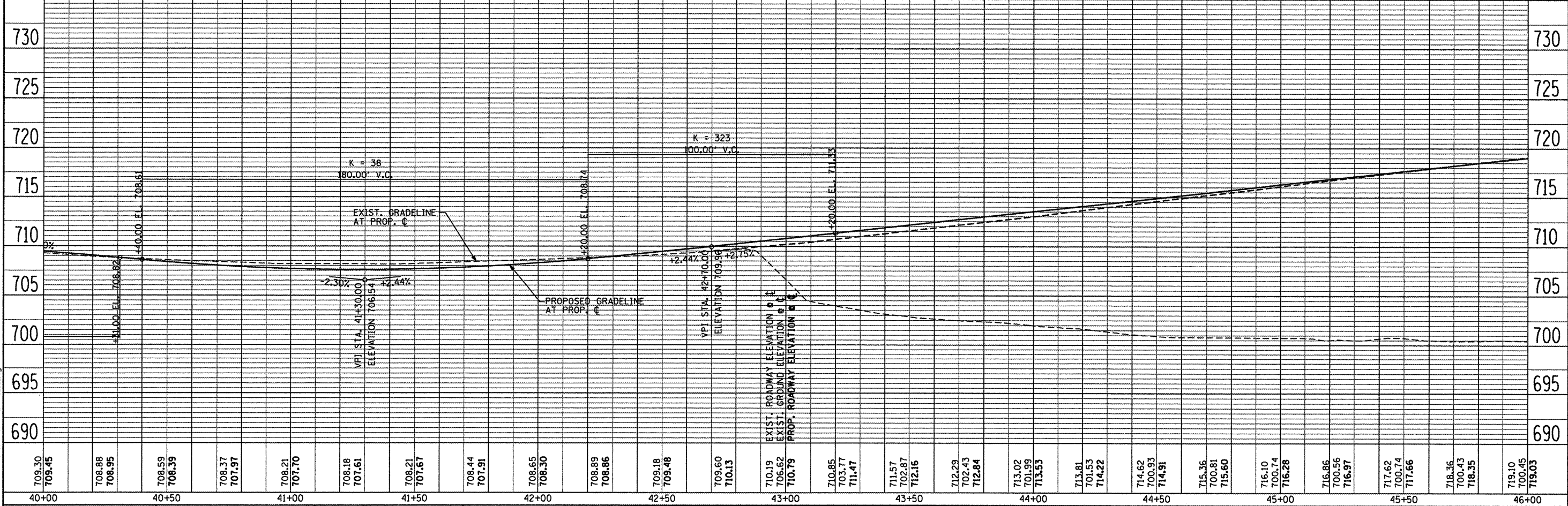
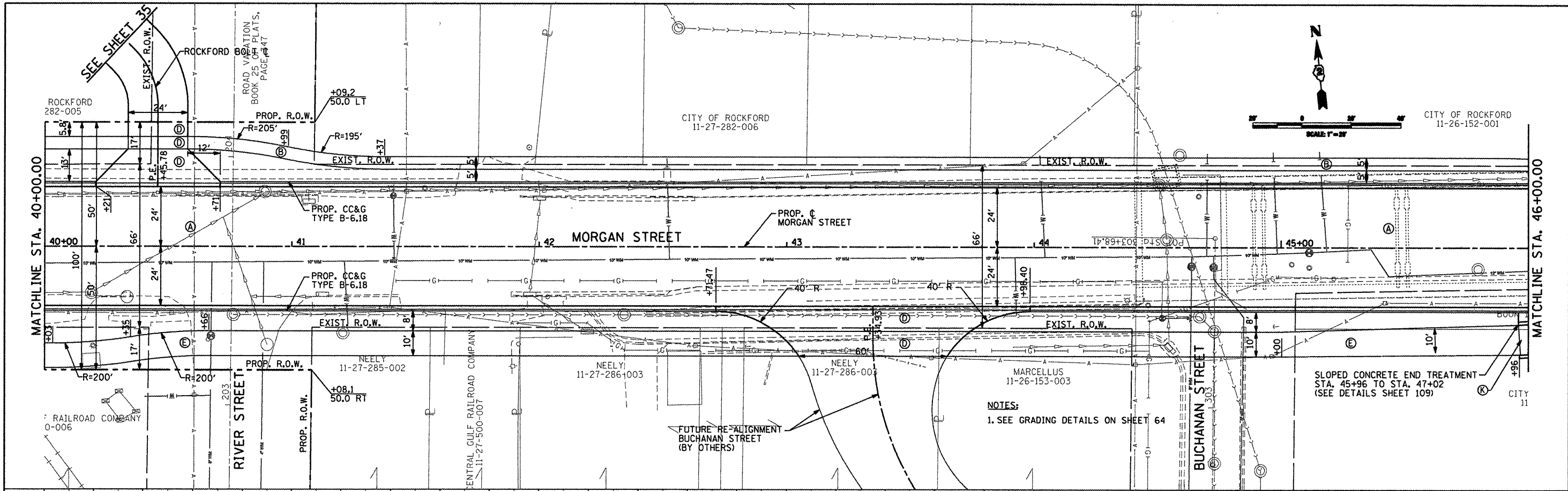


PLAN	DATE
REVISIONS	BY
NO.	DATE
NO.	DATE
NO.	DATE

PROFILE	DATE
REVISIONS	BY
NO.	DATE
NO.	DATE
NO.	DATE



709.30 709.45	708.88 708.95	708.59 708.39	708.37 707.97	708.21 707.70	708.18 707.61	708.21 707.67	708.44 707.91	708.65 708.30	708.89 708.86	709.18 709.48	709.60 710.13	710.19 706.62 710.79	710.85 703.77 711.47	711.57 702.87 712.16	712.29 702.43 712.84	713.02 701.99 713.53	713.81 701.53 714.22	714.62 700.93 714.91	715.36 700.81 715.60	716.10 700.74 716.28	716.86 700.56 716.97	717.62 700.74 717.66	718.36 700.43 718.35	719.10 700.45 719.03	
40+00	40+50	41+00	41+50	42+00	42+50	43+00	43+50	44+00	44+50	45+00	45+50	46+00													

**CMT**  
CRAWFORD, MURPHY & TILLY, INC.  
CONSULTING ENGINEERS  
License No. 184-000613

USER NAME = Steve Frange

DESIGNED	SJP / MNB	REVISED	-
DRAWN	ERD	REVISED	-
CHECKED	SJP	REVISED	-
DATE	02/04/2011	REVISED	-

**CITY OF ROCKFORD**  
**MORGAN STREET BRIDGE**

**PROPOSED ROADWAY PLAN & PROFILE**  
**MORGAN STREET / COLLEGE AVENUE**

SCALE: 1" = 20'

SHEET NO. 2 OF 8 SHEETS

STA. 40+00 TO STA. 46+00

FED. ROAD DIST. NO. 2 [ILLINOIS]

F.A. RTE. 5077

SECTION 99-00493-00-BR

COUNTY WINNEBAGO

TOTAL SHEETS 253  
SHEET NO. 27

CONTRACT NO. 85529  
FED. AID PROJECT BRM-5091651