

KENT CREEK



**LEGEND**

	INLET PROTECTION, SPECIAL		SODDING, SALT TOLERANT (SEE LANDSCAPING PLANS)
	PERIMETER EROSION BARRIER		GENERAL RESTORATION EROSION CONTROL BLANKET
	TREE PROTECTION		STONE RIP RAP WITH FILTER FABRIC
	TEMPORARY DITCH CHECK		PROPOSED DRAINAGE FLOW

PROPOSED RIP RAP CLASS A4, FILTER FABRIC 456 SQ FT

CRITICAL AREA #1 (OUTLET #1)

EXISTING STOCKPILED MATERIAL VOLUME = 3027 CU. YD.

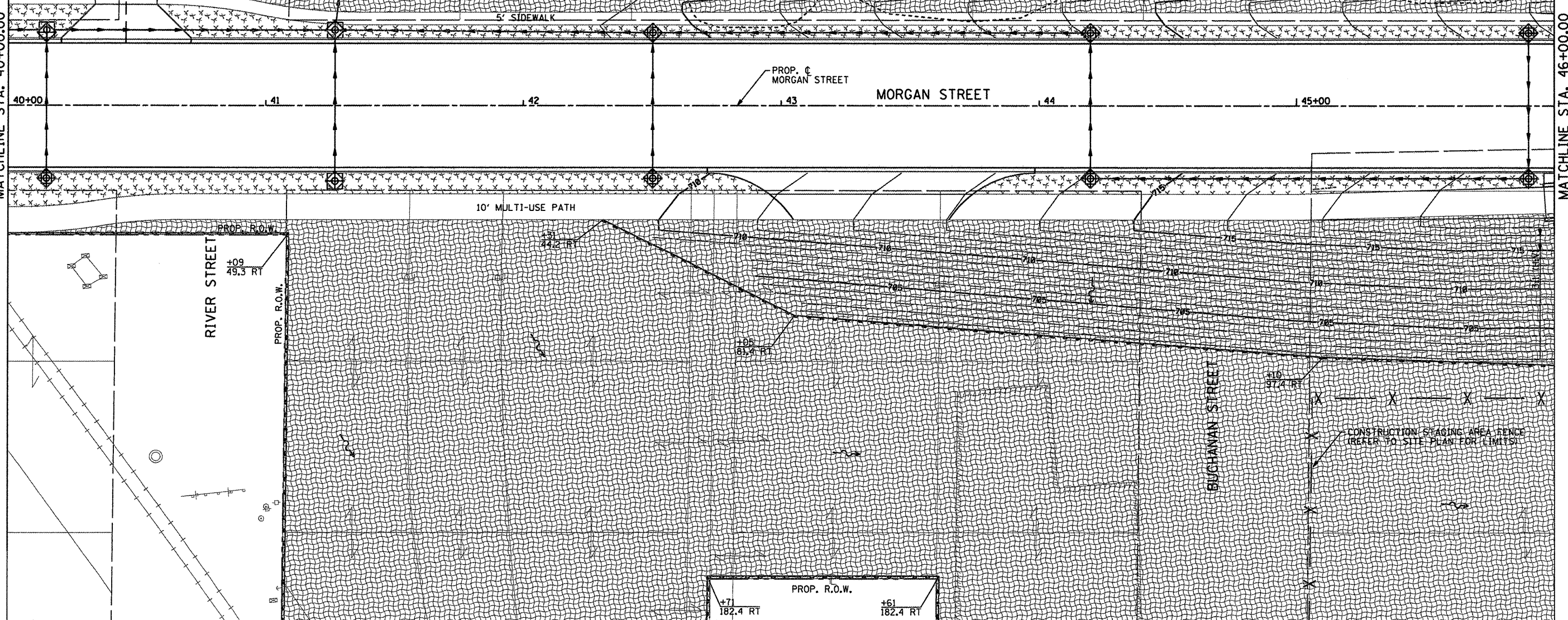
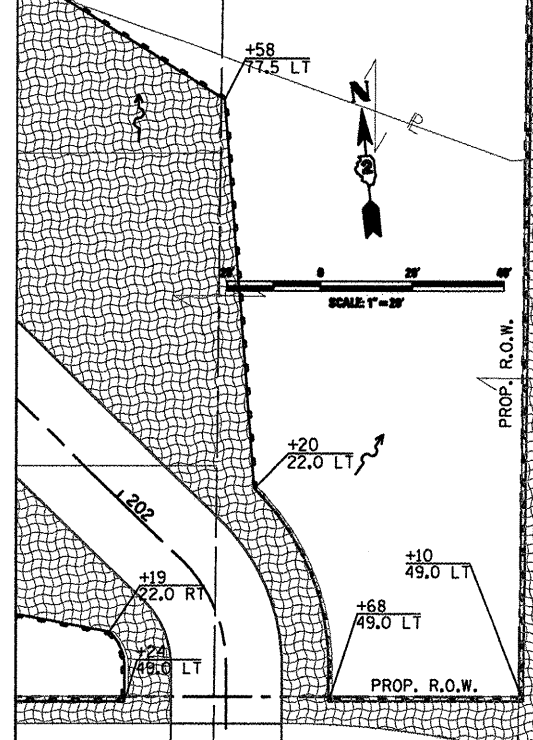
EXISTING STOCKPILED MATERIAL VOLUME = 930 CU. YD.

EXISTING STOCKPILED MATERIAL VOLUME = 80 CU. YD.

CONSTRUCTION STAGING AREA FENCE (REFER TO SITE PLAN FOR LIMITS)

MATCHLINE STA. 40+00.00

MATCHLINE STA. 46+00.00



I:\rockford\0826882\draw\cadd\sheet3.rvt.ERC\_28\_03.dgn

**CMT**  
 CRAWFORD, MURPHY & TULLY, INC.  
 CONSULTING ENGINEERS  
 License No. 084-000613

USER NAME = Steve Prange	DESIGNED - SJP / MNB	REVISED -
PLOT SCALE = 40,0000' / IN.	DRAWN - ERD	REVISED -
PLOT DATE = 02/04/11	CHECKED - SJP	REVISED -
	DATE - 02/04/2011	REVISED -

**CITY OF ROCKFORD  
MORGAN STREET BRIDGE**

**EROSION CONTROL PLAN**

SCALE: 20'=1" SHEET NO. 3 OF 10 SHEETS STA. 40+00 TO STA. 46+00

F.A. RTE.	SECTION	COUNTY	TOTAL SHEETS	SHEET NO.
5077	99-00493-00-BR	WINNEBAGO	253	69
CONTRACT NO. 85529			FED. ROAD DIST. NO. 2 [ILLINOIS] FED. AID PROJECT BRM-509965	