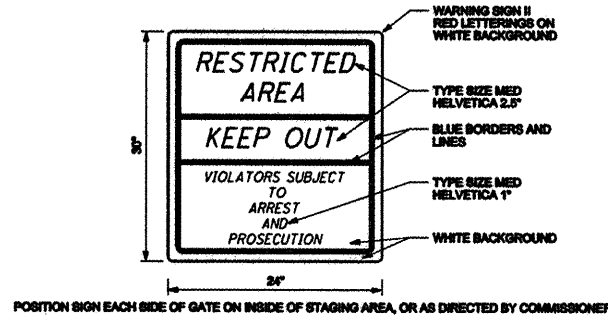
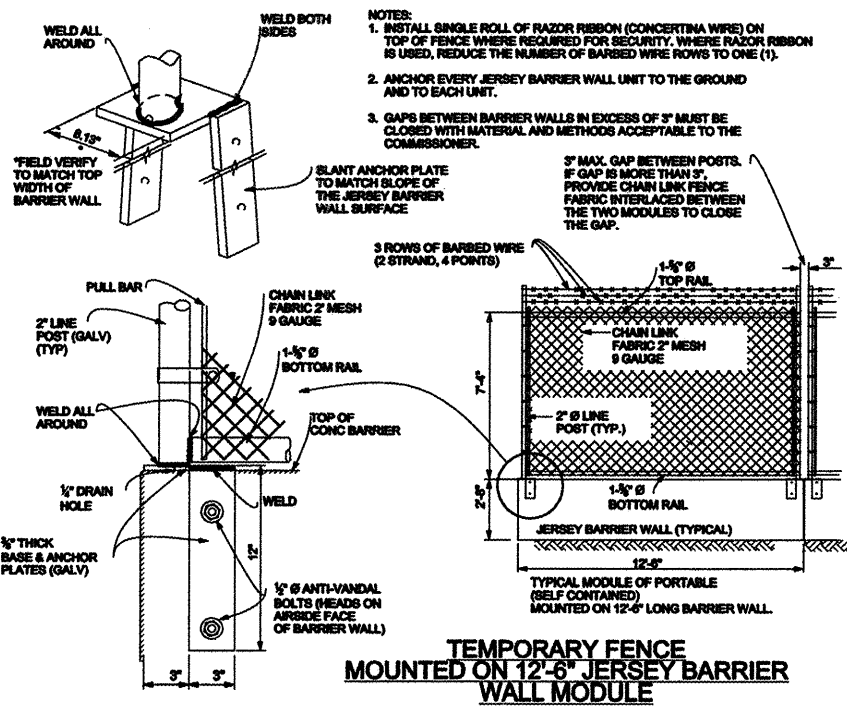


TEMPORARY TYPE D FENCE W/ GATE ELEVATION
NOT TO SCALE

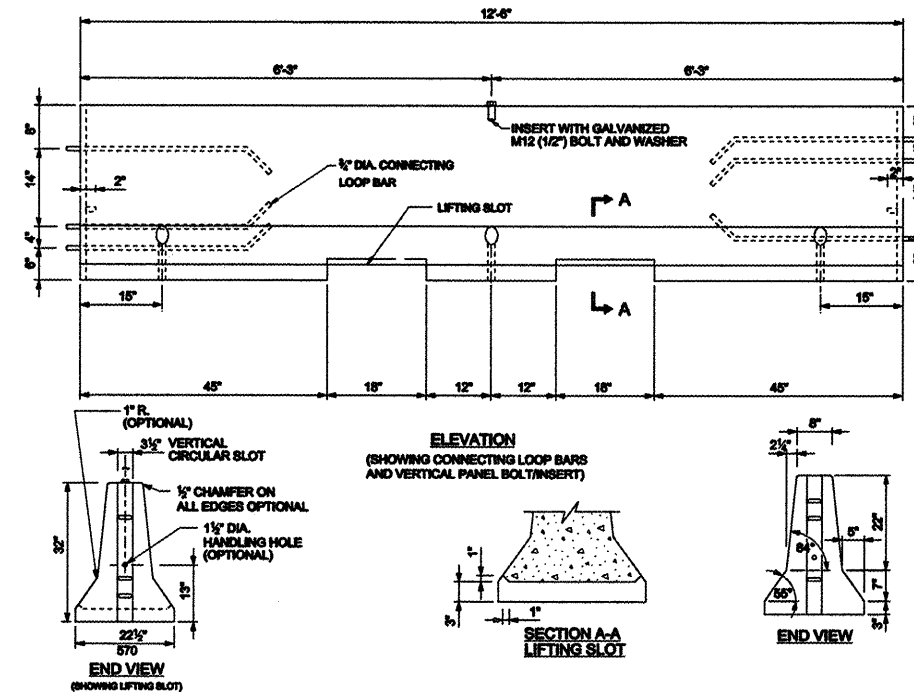


POSITION SIGN EACH SIDE OF GATE ON INSIDE OF STAGING AREA, OR AS DIRECTED BY COMMISSIONER.

WARNING SIGN DETAIL
NOT TO SCALE



TEMPORARY FENCE MOUNTED ON 12-6\"/>



CONCRETE BARRIER FOR TEMPORARY FENCE
NOT TO SCALE

I:\rockford\0826882\cadd\sheet\CONSTR_DET_B1.dgn



USER NAME = Steve Prange	DESIGNED - SJP / MNB	REVISED -
PLOT SCALE = 200.0000' / IN.	DRAWN - ERD	REVISED -
PLOT DATE = 02/04/11	CHECKED - SJP	REVISED -
	DATE - 02/04/2011	REVISED -

CITY OF ROCKFORD
MORGAN STREET BRIDGE

CONSTRUCTION DETAILS - 1

SCALE: N/A SHEET NO. 1 OF 9 SHEETS STA. N/A TO STA. N/A

F.A. RTE.	SECTION	COUNTY	TOTAL SHEETS	SHEET NO.
5077	99-00493-00-BR	WINNEBAGO	253	103
CONTRACT NO. 85529			FED. ROAD DIST. NO. 2 ILLINOIS FED. AID PROJECT BRM-509965	