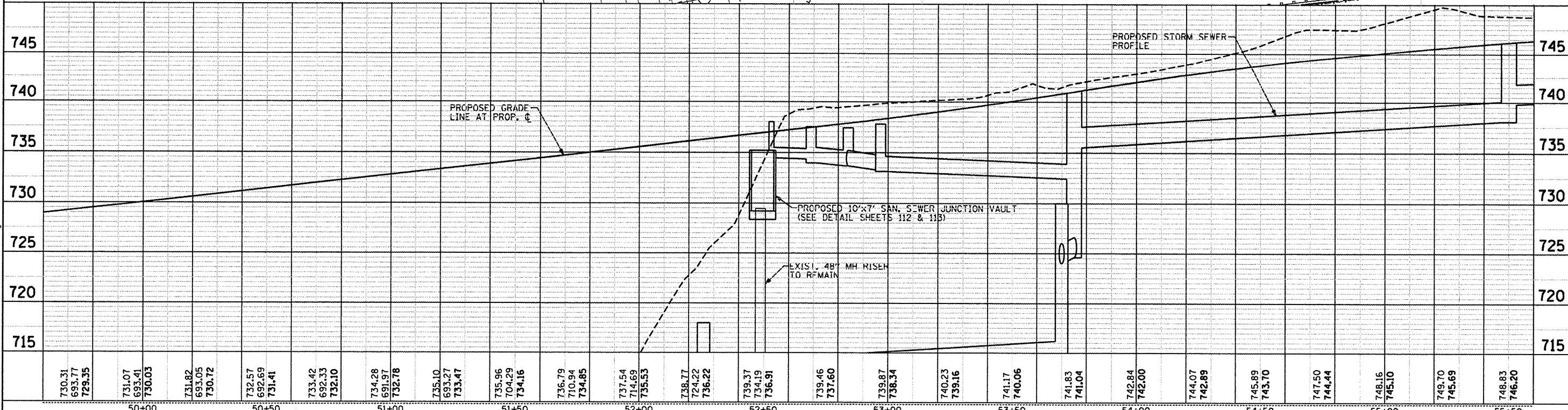
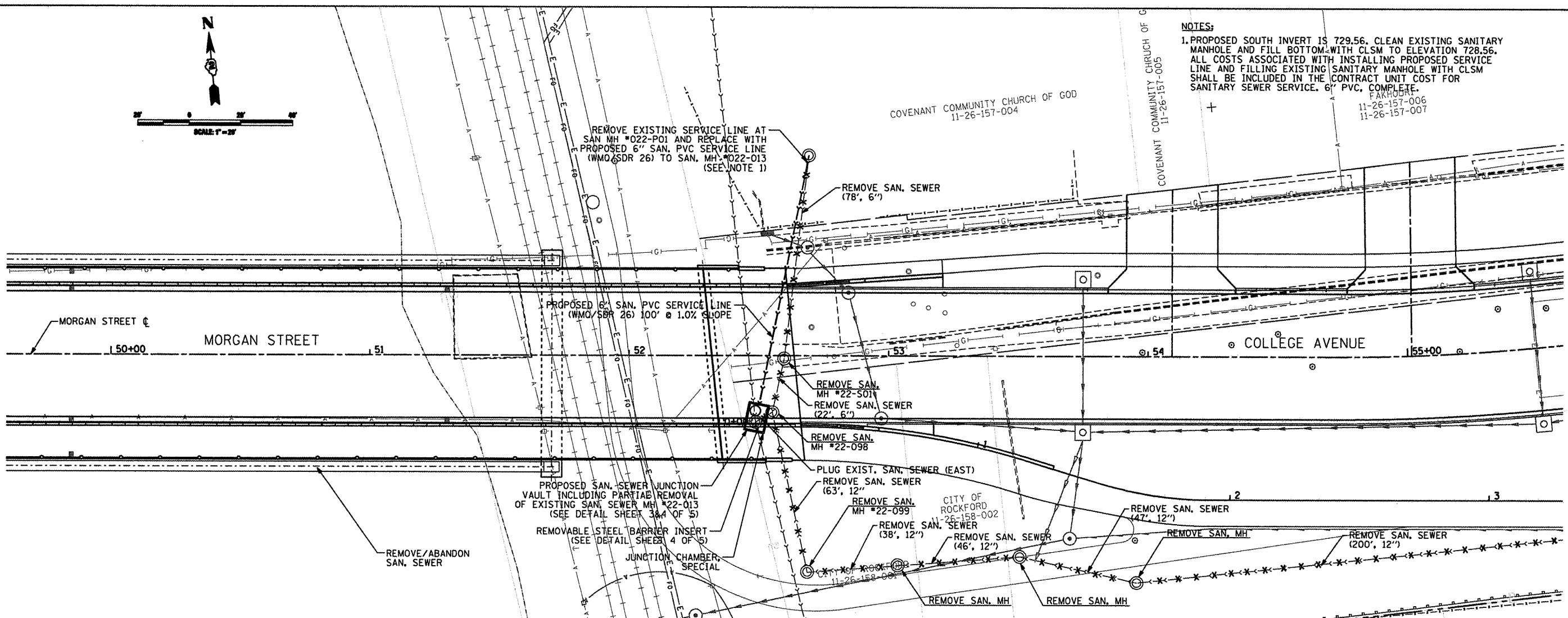


**NOTES:**  
 1. PROPOSED SOUTH INVERT IS 729.56. CLEAN EXISTING SANITARY MANHOLE AND FILL BOTTOM WITH CLSM TO ELEVATION 728.56. ALL COSTS ASSOCIATED WITH INSTALLING PROPOSED SERVICE LINE AND FILLING EXISTING SANITARY MANHOLE WITH CLSM SHALL BE INCLUDED IN THE CONTRACT UNIT COST FOR SANITARY SEWER SERVICE, 6" PVC, COMPLETE.  
 FAKHOOR  
 11-26-157-006  
 11-26-157-007



DATE	
BY	
REVIEWED	
DESIGNED	
DRAWN	
CHECKED	
PLANNED	
NO. _____	

DATE	
BY	
REVIEWED	
DESIGNED	
DRAWN	
CHECKED	
PLANNED	
NO. _____	

LA:ROCKFORD\B26292.Dwg\CDL\_Sheets\1P\_CONST\_DET\_SANITARY\_82.dwg

730.31	731.07	731.82	732.57	733.42	734.28	735.10	735.96	736.79	737.54	738.27	739.37	739.46	739.87	740.23	741.17	741.83	742.84	744.07	745.89	747.50	748.16	748.70	748.83
693.77	693.41	693.05	692.69	692.33	691.97	693.27	693.27	704.29	714.69	724.22	734.19	737.60	738.34	739.16	741.06	741.04	742.00	742.89	743.70	744.44	745.10	745.69	746.20
729.35	730.03	730.72	731.41	732.10	732.78	733.47	734.16	734.85	735.53	736.22	736.91	737.60	738.34	739.16	740.06	741.04	742.00	742.89	743.70	744.44	745.10	745.69	746.20

<p><b>CMT</b>          CHARLTON, MURPHY &amp; TULLY, INC.          CONSULTING ENGINEERS          License No. 184-00063</p>	USER NAME = Steve Prange	DESIGNED SJP / MNB	REVISED -	<b>CITY OF ROCKFORD</b> <b>MORGAN STREET BRIDGE</b>	<b>PROPOSED SANITARY SEWER RELOCATION</b> <b>MORGAN STREET / COLLEGE AVENUE</b>	F.A. RTE. 5077	SECTION 99-00493-00-BR	COUNTY WINNEBAGO	TOTAL SHEETS 253	SHEET NO. 111
	PLOT SCALE = 40.0000' / IN.	CHECKED SJP	REVISED -			SCALE: 1" = 20'	SHEET NO. 2 OF 5 SHEETS	STA. 49+60 TO STA. 55+60	FED. ROAD DIST. NO. 2 ILLINOIS	FED. AID PROJECT BRM-509169
	PLOT DATE = 02/04/11	DATE 02/04/2011	REVISED -			CONTRACT NO. 85529				