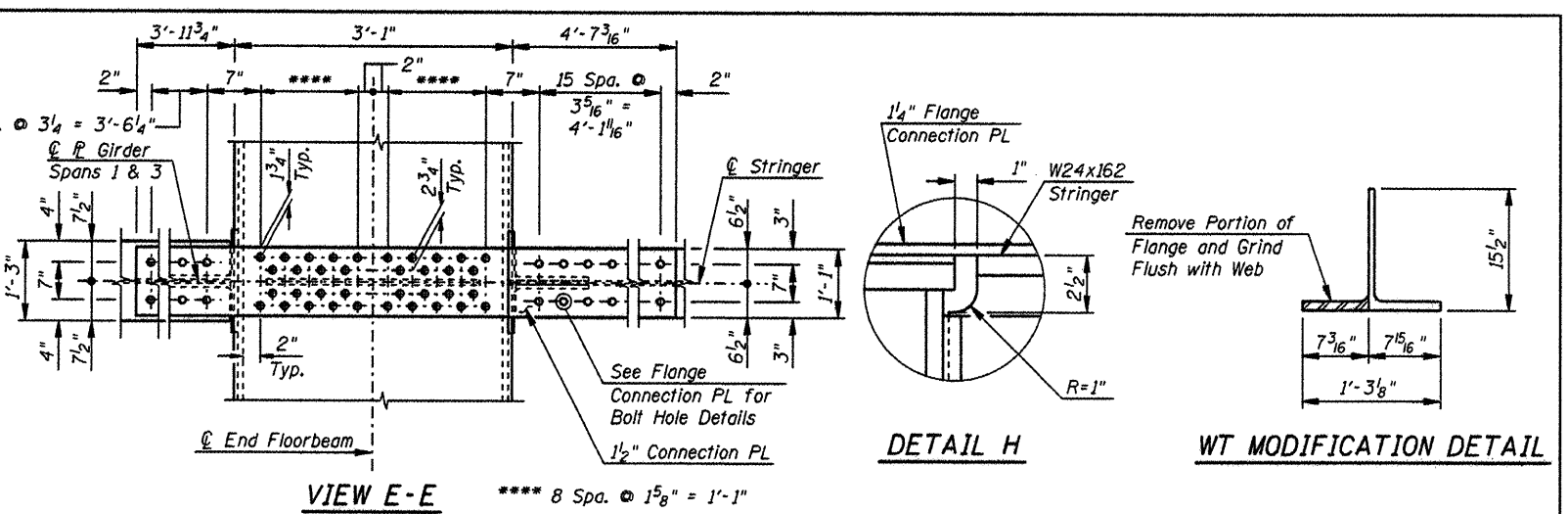


VIEW A-A

STRINGER END ELEVATION AT WEB PLATE CONNECTION

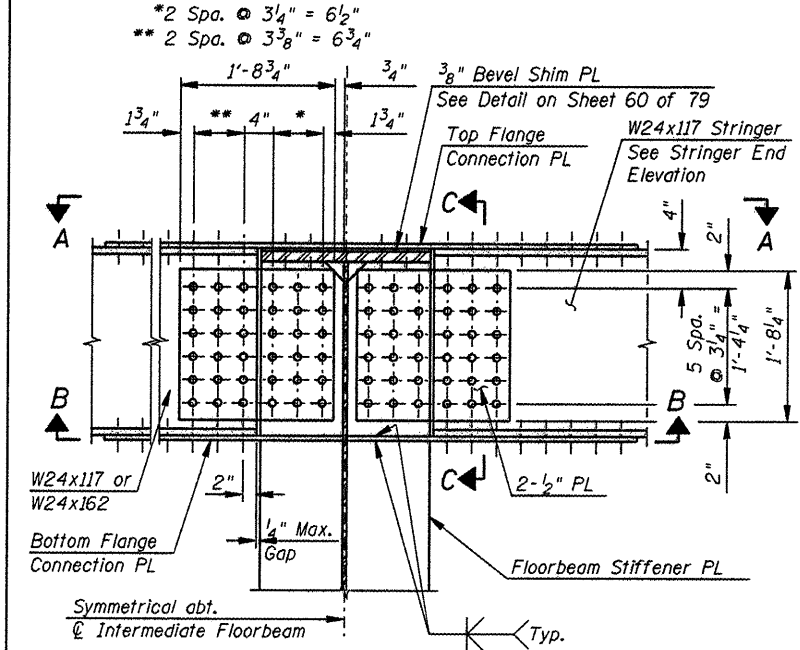


VIEW E-E

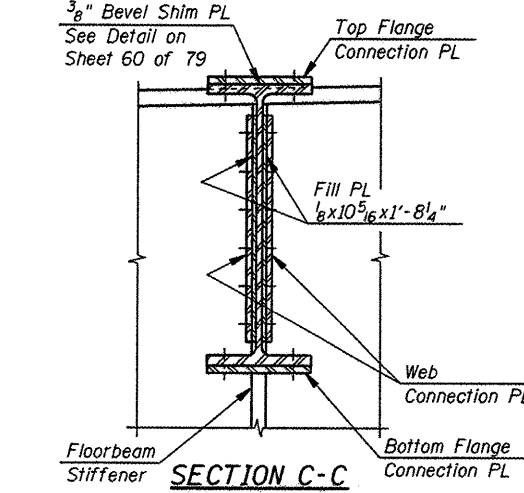
DETAIL H

WT MODIFICATION DETAIL

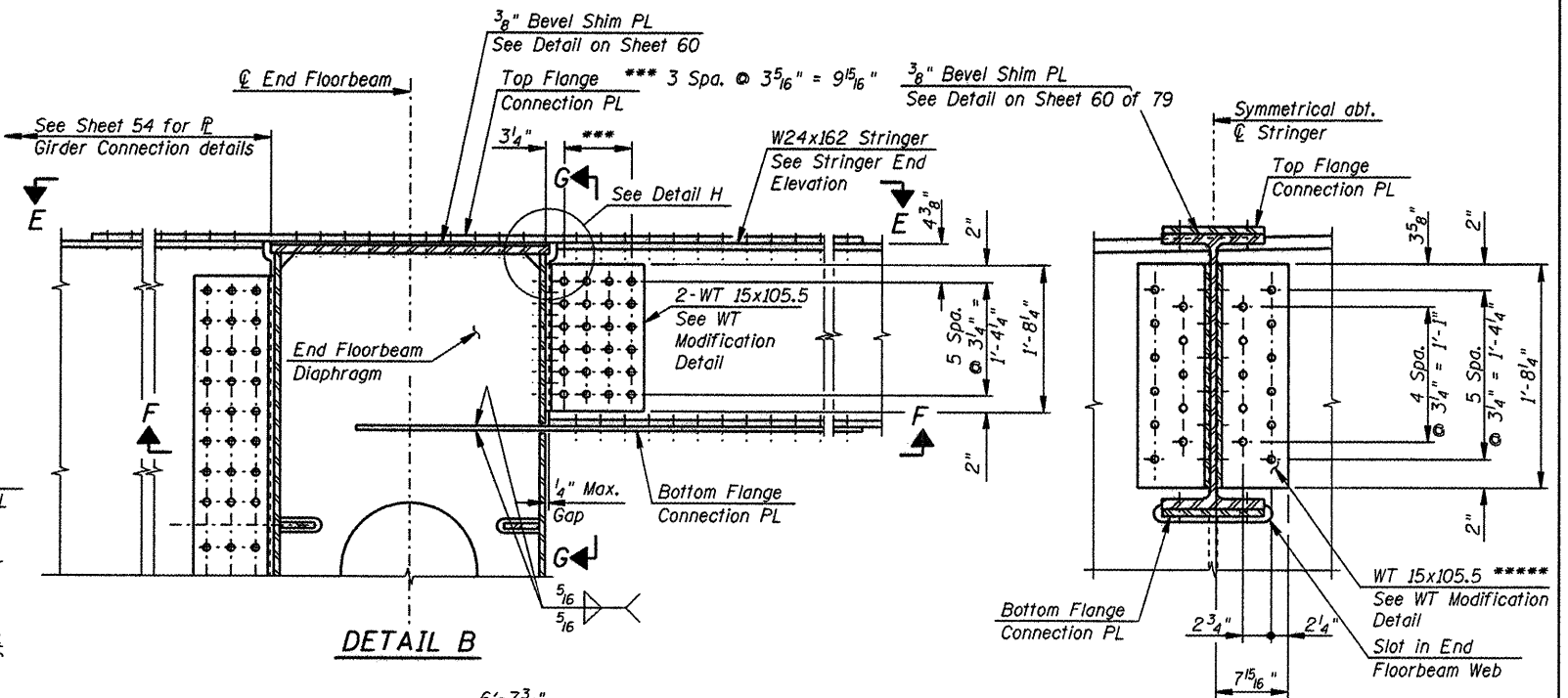
Notes:
 Use standard 1/16" φ holes for 1" φ bolts on stringer webs at connections denoted as "Fixed".
 Use 1/16"x1 5/16" slotted holes for 1" φ bolts on stringer webs at connections denoted as "Slotted".
 Bolt holes in web connection plates and FB stiffener PL shall be 1/16" φ holes for 1" φ bolts.



DETAIL A

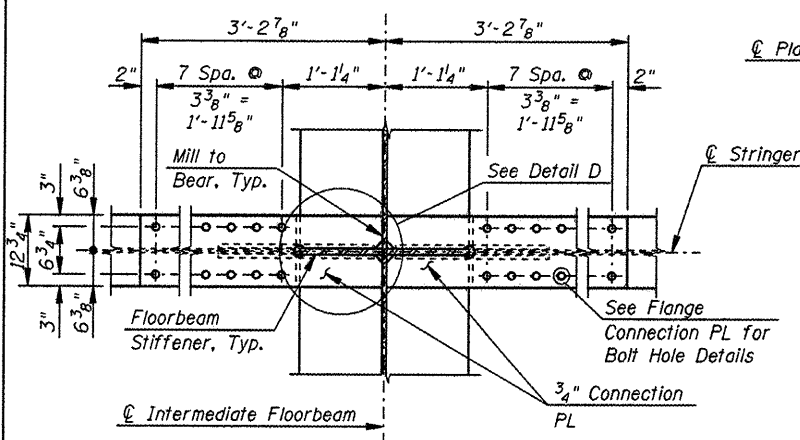


SECTION C-C

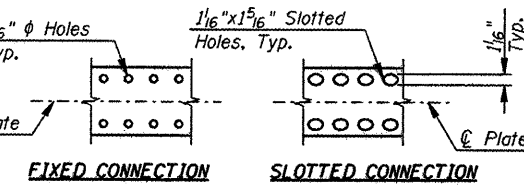


DETAIL B

SECTION G-G

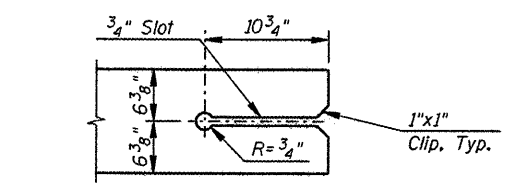


VIEW B-B

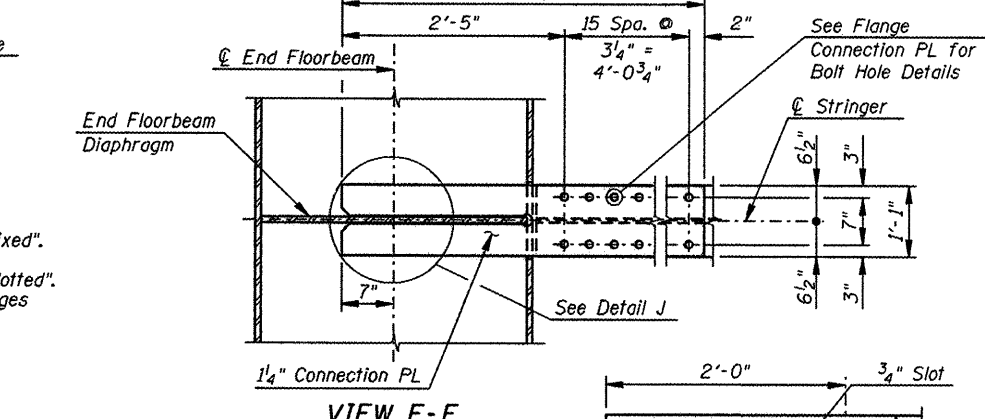


PART PLAN FLANGE CONNECTION PL

Notes:
 Use standard 1/16" φ holes for 1" φ bolts on all flange connection plates at connections denoted as "Fixed".
 Use 1/16"x1 5/16" slotted holes for 1" φ bolts on all flange connection plates at connections denoted as "Slotted".
 Bolt holes in stringer flanges and floorbeam flanges shall be 1/16" φ holes for 1" φ bolts.



DETAIL D



VIEW F-F

DETAIL J

Notes:
 ○ Denotes 1" φ high-strength bolt.
 For End Floorbeam details, see sheets 54 and 55 of 79.
 For Intermediate Floorbeam details, see sheets 56 thru 57 of 79.
 For additional notes and locations of Details A and B, see sheet 60 of 79.

NOTE:
 BOLTS IN SLOTTED CONNECTION SHALL BE FINGER TIGHT UNTIL SLAB IS POURED. BOLTS SHALL BE FULLY TIGHTENED AFTER SLAB HAS BEEN POURED. SEE SHEET 4 OF 79.