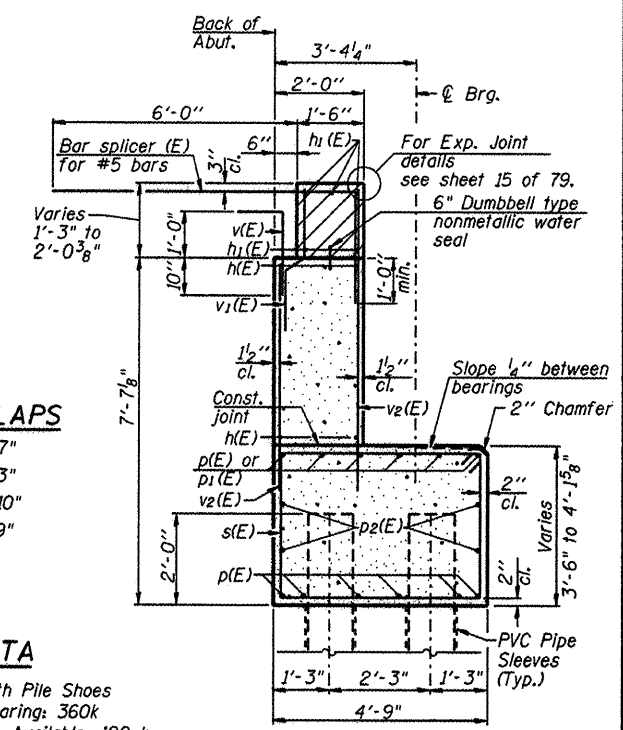


ELEVATION
(Looking West)



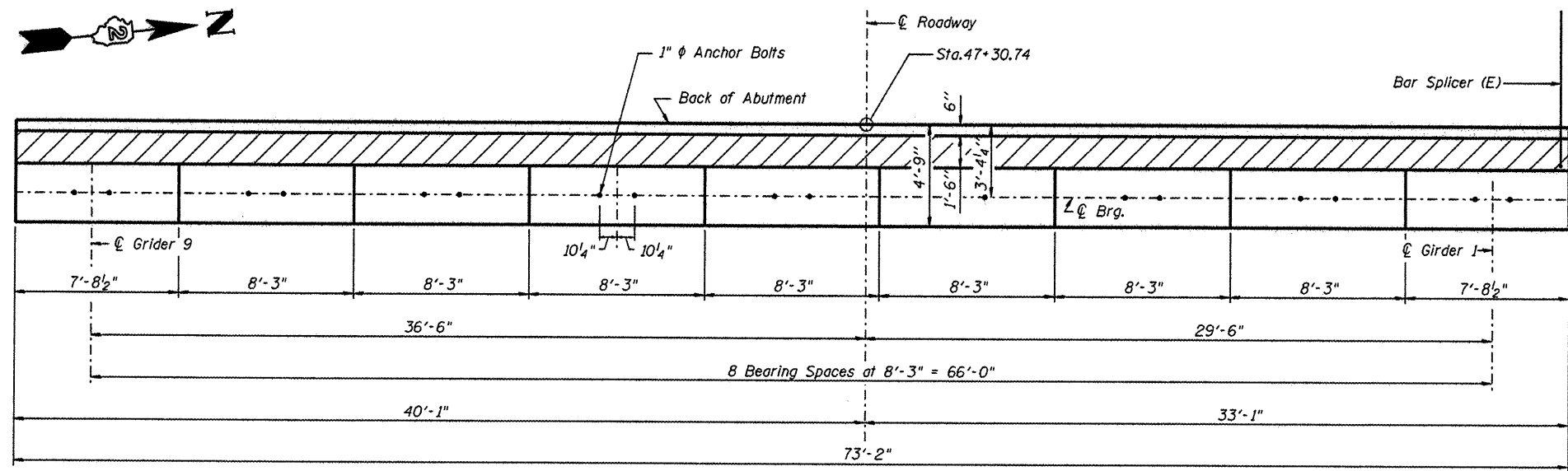
SECTION THRU WEST ABUTMENT

MIN. BAR LAPS

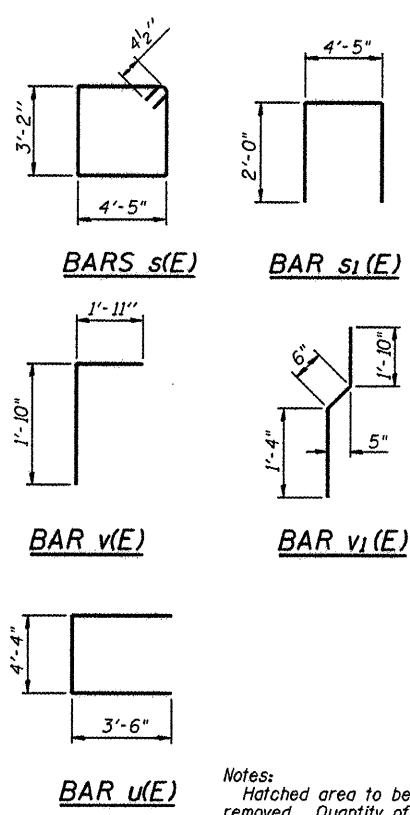
#4	=	2'-7"
#5	=	3'-3"
#6	=	3'-10"
#8	=	6'-9"

PILE DATA

Type: HP 12x53, with Pile Shoes
 Nominal Required Bearing: 360k
 Allowable Resistance Available: 120 k
 Est. Length: 94'
 No. Production Piles: 14
 No. Test Piles: 1



TOP VIEW

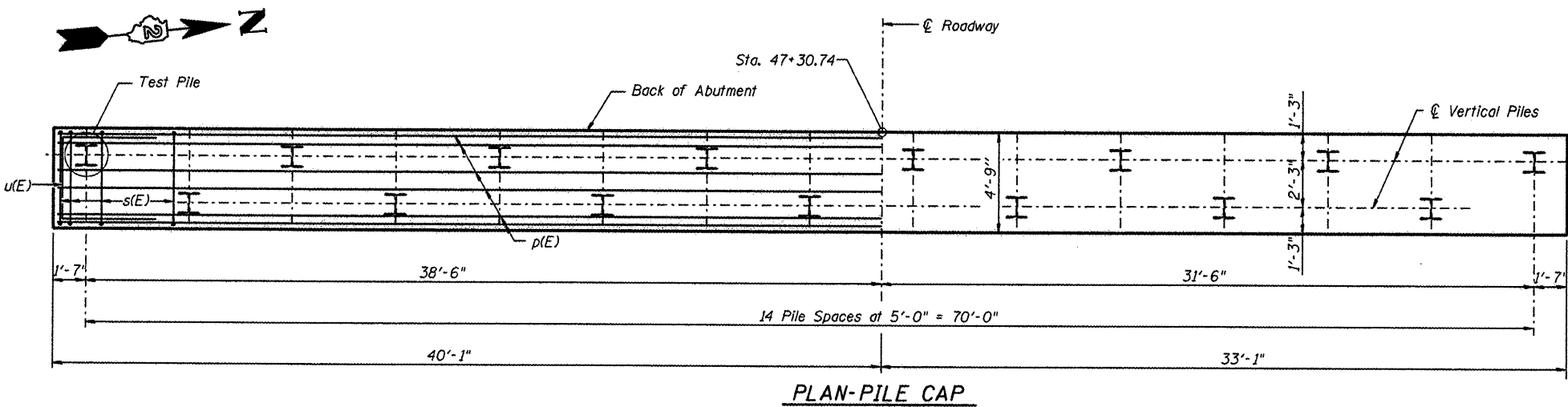


WEST ABUTMENT BILL OF MATERIAL

Bar	No.	Size	Length	Shape
h(E)	20	#5	38'-1"	—
h1(E)	10	#6	38'-4"	—
p(E)	24	#8	39'-10"	—
p1(E)	6	#5	40'-11"	—
p2(E)	8	#4	37'-9"	—
s(E)	88	#4	15'-11"	┌
s1(E)	42	#4	8'-5"	└
u(E)	8	#6	11'-4"	┌
v(E)	74	#5	3'-9"	┌
v1(E)	74	#4	3'-8"	┌
v2(E)	148	#6	6'-4"	┌
Concrete Structures	Cu. Yd.		69.9	
Reinforcement Bars, Epoxy Coated	Pound		7,570	
Furnishing Steel Piles HP 12x53	Foot		1,316	
Driving Piles	Foot		1,316	
Test Pile Steel HP 12x53	Each		1	
Concrete Sealer	Sq. Ft.		890	
Bar Splacers	Each		74	
Pile Shoes	Each		15	

For details of Bar Splacers, see sheet 76 of 79.
 For details of piles, see sheet 75 of 79.

Notes:
 Hatched area to be poured after superstructure false work has been removed. Quantity of concrete included with Concrete Superstructure. Space reinforcement in cap to miss anchor bolts. Pour steps monolithically with cap. PVC Pipe Sleeves shall be provided for each pile in the West Abutment. Cost shall be included in Furnishing Steel Piles HP 12x53.



PLAN-PILE CAP

L:\PROJECTS\082828\082828\Drawings\CADD\Sheets\AS.66-West Abutment.dgn



HNTB

DESIGNED - PA, JDJ, BPD, CJW	REVISED -
DRAWN - GLD	REVISED -
CHECKED - RJK	REVISED -
DATE - 02/04/2011	REVISED -

**CITY OF ROCKFORD
MORGAN STREET BRIDGE**

WEST ABUTMENT STRUCTURE NO. 101-6108	
SCALE:	SHEET NO. 66 OF 79 SHEETS
STA. 47+00.74 TO STA. 52+63.50	

F.A.U. RTE.	SECTION	COUNTY	TOTAL SHEETS	SHEET NO.
5077	99-00493-00-BR	WINNEBAGO	253	192
CONTRACT NO. 85529			FED. ROAD DIST. NO. 2 (ILLINOIS) FED. AID PROJECT BRN-50916(S)	