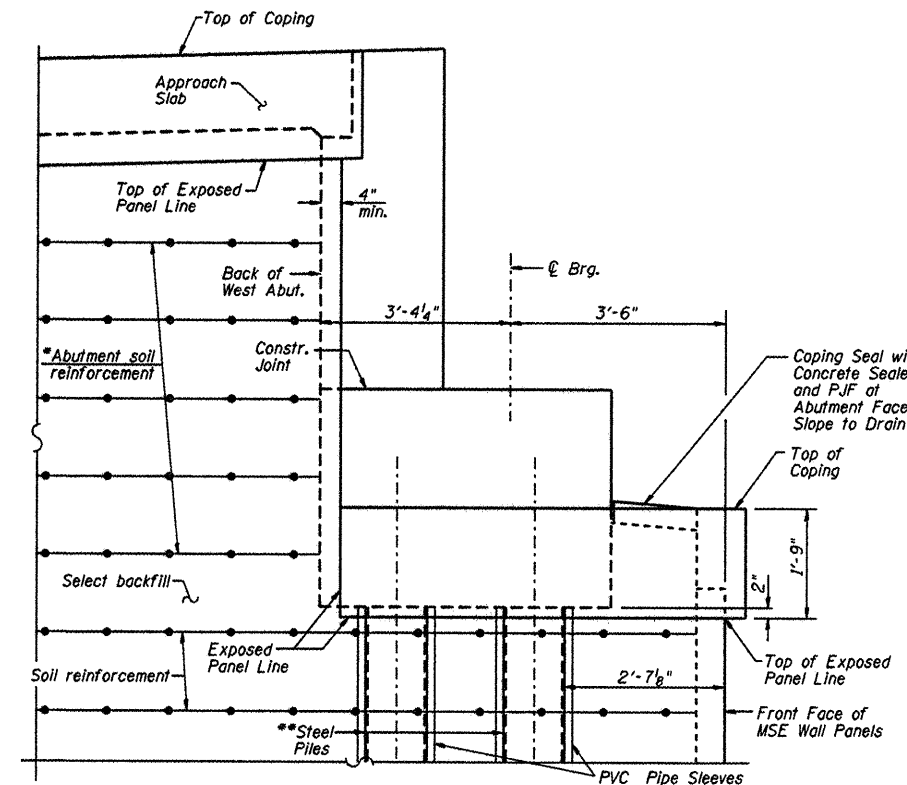


SOUTH WALL ELEVATION
(Looking North)

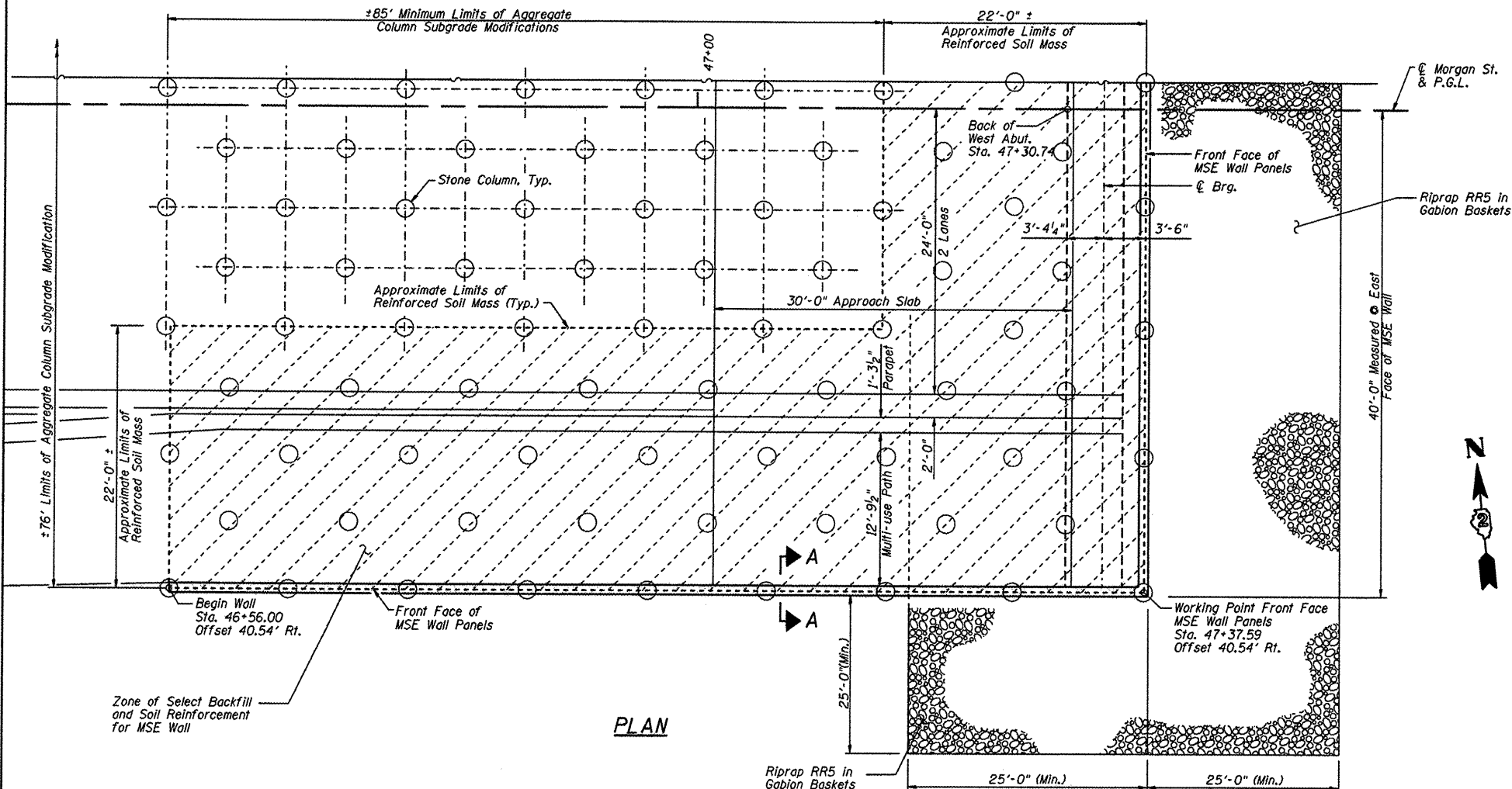
Note:
Show Form Liner Textured Surface on all exposed precast MSE wall panels.



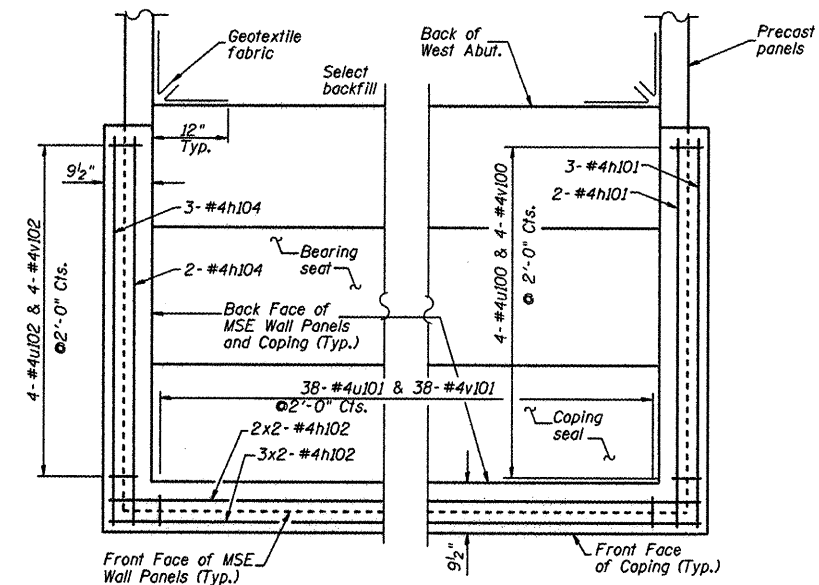
SECTION THRU ABUTMENT

*The M.S.E. wall supplier shall design the abutment soil reinforcement to resist a horizontal force of 2.1 kips/ft. of abutment.

** Piles shall be driven prior to placement of the reinforced select fill and coated with coal tar epoxy from the bottom of the select fill to 1" above the base of the abutment. The cost of the coal tar epoxy coating shall be included with the cost of the furnishing Piles.



PLAN



COPING REINFORCEMENT PLAN AT ABUTMENT

L:\ROCKFORD\0826082\Drawings\CADD\Sheets\S.78-MSE Wall.dgn

CMT
CRAWFORD, MURPHY & TALLY, INC.
CONSULTING ENGINEERS
License No. 04-000615

HNTB

DESIGNED - PA, JDJ, BPD, CJW	REVISED -
DRAWN - GLD	REVISED -
CHECKED - RJK	REVISED -
DATE - 02/04/2011	REVISED -

**CITY OF ROCKFORD
MORGAN STREET BRIDGE**

**MSE WALL DETAILS - II
STRUCTURE NO. 101-6108**

SCALE: SHEET NO. 70 OF 79 SHEETS STA. 47+00.74 TO STA. 52+63.50

F.A.U. RTE.	SECTION	COUNTY	TOTAL SHEETS	SHEET NO.
5077	99-00493-00-BR	WINNEBAGO	253	196
CONTRACT NO. 85529			FED. ROAD DIST. NO. 2 ILLINOIS FED. AID PROJECT BRM-5091651	