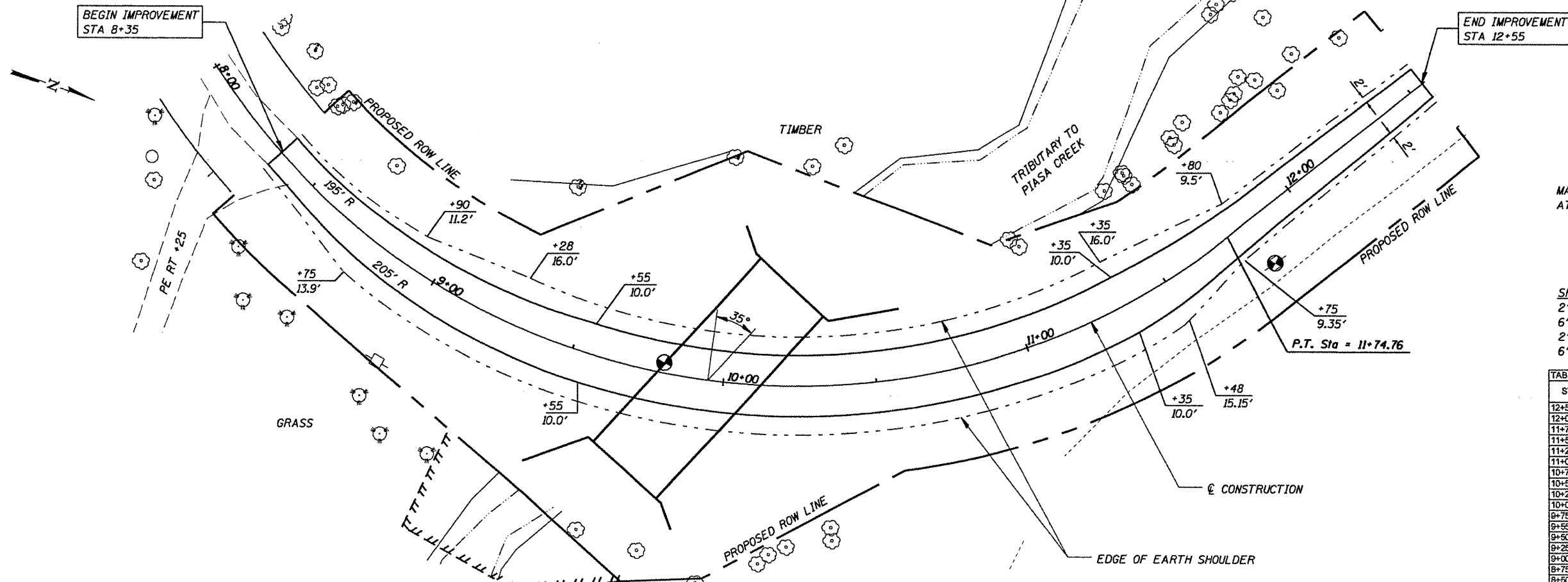


PLAN	SURVEYED	BY	DATE
	PLOTTED		
	CHECKED		
	REVISIONS		
	NO. OF WAYS CHECKED		
	PAID FILE NAME		
	NO.		

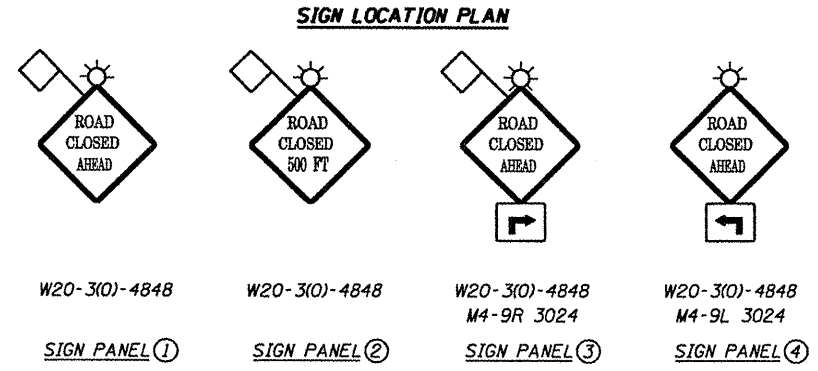
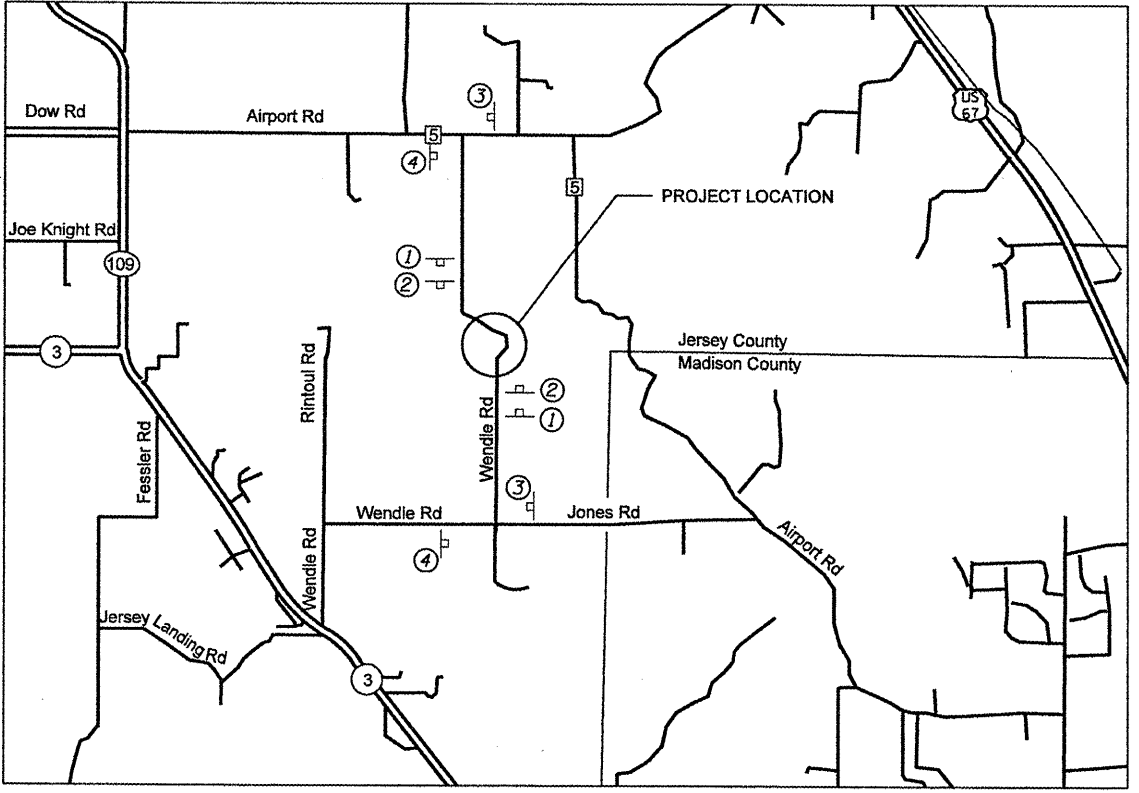


MATCH EXISTING ROADWAY
AT STA 8+35 AND STA 12+55

SHOULDER WIDTH TRANSITIONS:
 2' TO 6' LT - STA 8+90 TO STA 9+28
 6' TO 2' LT - STA 11+35 TO STA 11+80
 2' TO 6' RT - STA 8+35 TO STA 8+75
 6' TO 2' RT - STA 11+48 TO STA 11+75

STA	LT SHOULDER		LT EDGE OF PVT		RT EDGE OF PVT		RT SHOULDER	
	OFFSET	ELEV	OFFSET	ELEV	OFFSET	ELEV	OFFSET	ELEV
12+50	8.07	508.65	6.06	508.77	5.75	508.77	7.75	508.65
12+00	8.07	508.47	6.90	508.60	6.80	508.60	8.80	508.67
11+75	10.62	508.34	7.84	508.51	7.32	508.59	9.35	508.76
11+50	14.76	507.96	8.43	508.32	8.96	508.06	14.82	508.71
11+25	16.00	507.93	10.00	508.30	10.00	508.10	16.00	508.73
11+00	16.00	507.93	10.00	508.30	10.00	508.10	16.00	508.73
10+75	16.00	507.93	10.00	508.30	10.00	508.10	16.00	508.73
10+50	16.00	507.93	10.00	508.30	10.00	508.10	16.00	508.73
10+25	16.00	507.93	10.00	508.30	10.00	508.10	16.00	508.73
10+00	16.00	507.93	10.00	508.30	10.00	508.10	16.00	508.73
9+75	16.00	507.93	10.00	508.30	10.00	508.10	16.00	508.73
9+55	16.00	507.93	10.00	508.30	10.00	508.10	16.00	508.73
9+50	16.00	507.92	9.87	508.31	10.00	508.10	16.00	508.73
9+25	15.84	507.91	8.87	508.36	9.72	508.06	15.71	508.71
9+00	13.02	508.14	8.06	508.45	9.02	508.13	15.02	508.76
8+75	10.07	508.55	7.44	508.70	7.91	508.28	13.92	508.94
8+50	9.03	508.87	7.02	508.07	6.42	508.51	9.26	508.33

PROFILE	SURVEYED	BY	DATE
	PLOTTED		
	CHECKED		
	REVISIONS		
	NO. OF WAYS CHECKED		
	PAID FILE NAME		
	NO.		



SEE STANDARDS 701901 AND BLR 21
FOR DETAILS NOT SHOWN

- ☀ TYPE B MONODIRECTIONAL FLASHING LIGHT
- ◊ 18" x 18" ORANGE FLAG

TR 136 (WENDLE RD) SHALL BE CLOSED TO ALL TRAFFIC DURING THE CONSTRUCTION OF THIS PROJECT. TYPE 3 BARRICADES SHALL EXTEND FROM SHOULDER TO SHOULDER AS DETAILED ON STANDARD 701901. BARRICADES AT THE SOUTH END OF THE PROJECT SHALL BE LOCATED NORTH OF THE PRIVATE ENTRANCE AT STA 8+25. ALL SIGNS, LIGHTS, AND FLAGS ARE INCLUDED IN THE COST FOR THE TRAFFIC CONTROL AND PROTECTION STANDARD BLR-21.

CEC Cummins Engineering Corporation
Civil and Structural Engineering

JOB = 2237	DESIGNED - NAK	REVISED -
FILE NAME = 2237Roi.dgn	DRAWN - AJH	REVISED -
PLOT SCALE = 48.0000 sf / IN.	CHECKED -	REVISED -
PLOT DATE = 1/26/2011	DATE - 1/26/2011	REVISED -

**JERSEY COUNTY
TR 136 IMPROVEMENTS**

SHOULDER LAYOUT & TRAFFIC CONTROL SIGNS

SCALE:	SHEET NO.	OF	SHEETS	STA. 8+00 TO STA. 12+55
--------	-----------	----	--------	-------------------------

TR	SECTION	COUNTY	TOTAL SHEETS	SHEET NO.
136	08-05117-00-BR	JERSEY	10	5
CONTRACT NO. 97459			ILLINOIS FED. AID PROJECT	