

STATE OF ILLINOIS
DEPARTMENT OF TRANSPORTATION

F.A.P. RTE.	SECTION	COUNTY	TOTAL SHEETS	SHEET NO.
VAR	(L, M) TS, RR & (116) TS, RR	IROQUOIS	18	1
		ILLINOIS	CONTRACT NO. 66M10	

INDEX OF SHEETS

- 1 COVER SHEET
- 2 GENERAL NOTES
- 3-4 SUMMARY OF QUANTITIES
- 5 SCHEDULES
- 6-7 US 24/IL 1 AND SECOND ST
- 8-9 US 24/IL 1 AND THIRD ST
- 10-11 US 24/IL 1 AND FOURTH ST
- 12-13 US 24/IL 1 AND FIFTH ST
- 14-15 US 24/IL 1 AND EIGHTH ST
- 16-17 US 30 AND ELM ST
- 18 DETAILS

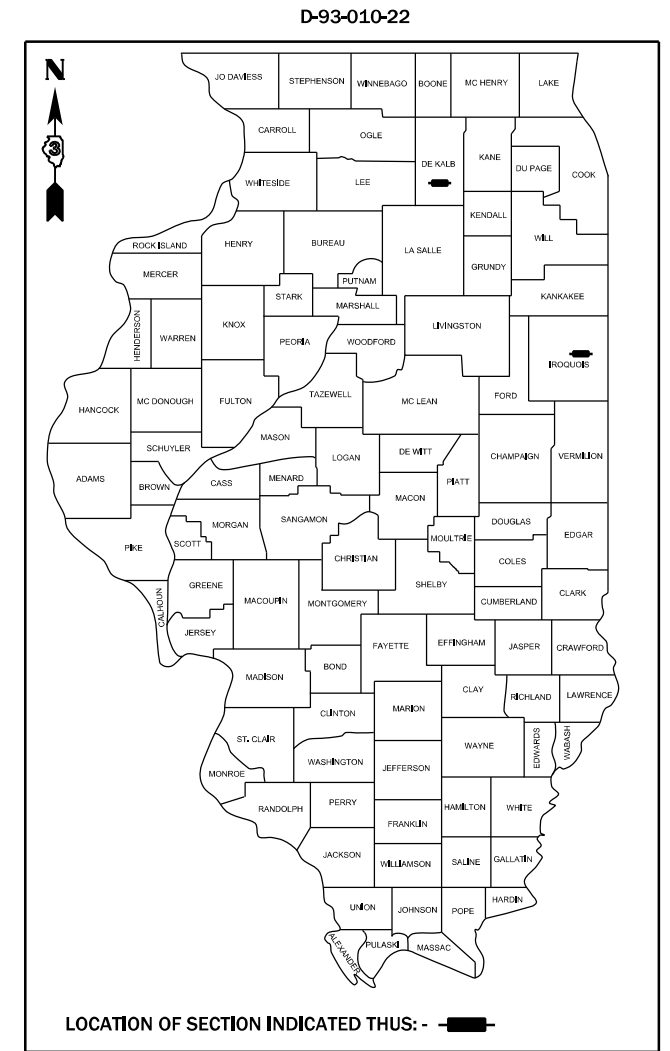
HIGHWAY STANDARDS

- 000001-08 STANDARD SYMBOLS, ABBREVIATIONS AND PATTERNS
- 001006 DECIMAL OF AN INCH AND OF A FOOT
- 701101-05 OFF-ROAD OPERATIONS, MULTILANE, 15' (4.5 m) TO 24" (600 mm) FROM PAVEMENT EDGE
- 701701-10 URBAN LANE CLOSURE, MULTILANE INTERSECTION
- 701901-08 TRAFFIC CONTROL DEVICES
- 857001-01 STANDARD PHASE DESIGNATION DIAGRAMS AND PHASE SEQUENCES
- 857006-01 SUPERVISED RAILROAD INTERCONNECT CIRCUIT
- 862001-01 UNINTERRUPTABLE POWER SUPPLY (UPS)

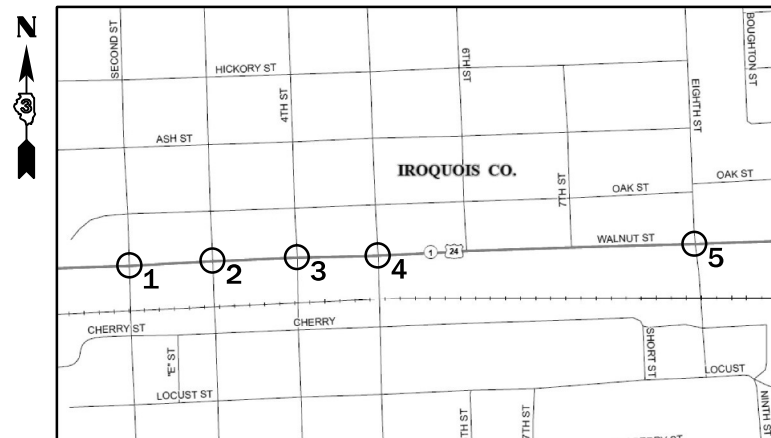
**PROPOSED
HIGHWAY PLANS**

FAP ROUTE 317 (US 24/IL 1) & FAP 573 (US 30)
SECTION (L, M) TS, RR & (116) TS, RR
PROJECT: STATE
TRAFFIC SIGNAL IMPROVEMENTS
IROQUOIS AND DEKALB COUNTIES

C-93-030-22

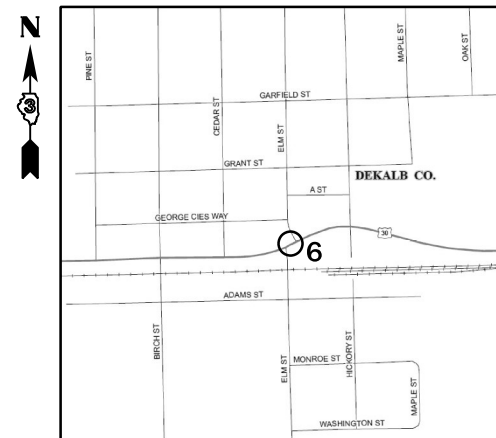


US 24/IL 1 - WATSEKA

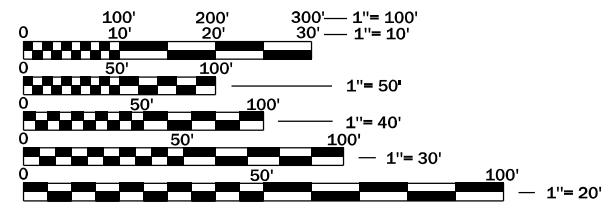


- 1. US 24/IL 1 AND SECOND ST
- 2. US 24/IL 1 AND THIRD ST
- 3. US 24/IL 1 AND FOURTH ST
- 4. US 24/IL 1 AND FIFTH ST
- 5. US 24/IL 1 AND EIGHTH ST

US 30 - WATERMAN



- 6. US 30 AND ELM ST



FULL SIZE PLANS HAVE BEEN PREPARED USING STANDARD ENGINEERING SCALES. REDUCED SIZED PLANS WILL NOT CONFORM TO STANDARD SCALES. IN MAKING MEASUREMENTS ON REDUCED PLANS, THE ABOVE SCALES MAY BE USED.

J.U.L.I.E.
JOINT UTILITY LOCATION INFORMATION FOR EXCAVATION
1-800-892-0123
OR 811

PROJECT ENGINEER: YOGESH PATEL, P.E.
UNIT CHIEF: MARC BUDZYNSKI, P.E.
DISTRICT 3 NO. (815) 434-6131
CONTRACT NO. 66M10

GROSS & NET LENGTH = POINT LOCATIONS

US 24/IL 1 - OTHER ARTERIAL
2019 ADT = 7800
P.V. = 88.4% S.U. = 5.8% M.U. = 5.8%

US 30 - MINOR ARTERIAL
2019 ADT = 3550
P.V. = 82.0% S.U. = 6.0% M.U. = 12.0%

STATE OF ILLINOIS
DEPARTMENT OF TRANSPORTATION

SUBMITTED February 14, 2022

[Signature]
REGIONAL ENGINEER

March 25, 2022
[Signature]
ENGINEER OF DESIGN AND ENVIRONMENT

March 23, 2022
[Signature]
DIRECTOR OF HIGHWAYS PROJECT IMPLEMENTATION

PRINTED BY THE AUTHORITY
OF THE STATE OF ILLINOIS

TRAFFIC SIGNAL GENERAL NOTES

THE CONTRACTOR SHALL COORDINATE WITH ICC AND IDOT STAFF TO SCHEDULE JOINT SHOP TESTING OF ALL TRAFFIC CONTROL EQUIPMENT AT THE VENDOR'S FACILITY PRIOR TO FIELD INSTALLATION AND TO SCHEDULE INSPECTION DURING FIELD INSTALLATION.

THE TRAFFIC SIGNAL SECTION AT THE ILLINOIS DEPARTMENT OF TRANSPORTATION, DISTRICT 3, SHALL BE NOTIFIED AT 815-434-8506 AT LEAST 72 HOURS PRIOR TO TURNING ON ANY FLASHER OR CONTROLLER UNITS.

THE CONTRACTOR SHALL BE RESPONSIBLE FOR PROTECTING UTILITY PROPERTY DURING CONSTRUCTION OPERATIONS AS OUTLINED IN ARTICLE 107.31 OF THE STANDARD SPECIFICATIONS. A MINIMUM OF 48 HOURS ADVANCE NOTICE IS REQUIRED FOR NON-EMERGENCY WORK. THE JULIE NUMBER IS 800-892-0123.

ALL TRAFFIC CONTROL AND OTHER ADVISORY SIGNS NEEDED FOR CONSTRUCTION ARE TO BE FURNISHED BY THE CONTRACTOR IN ACCORDANCE WITH SECTION 701 OF THE STANDARD SPECIFICATIONS.

THE CONTROLLER CABINET SHALL BE PLACED SO THAT A TECHNICIAN MAY SEE THE INTERSECTION OVER THE TOP OF THE CABINET WHILE WATCHING THE COMPONENTS IN THE CABINET.

THE PROPOSED TRAFFIC SIGNAL CONTROLLER CABINET SHALL BE FURNISHED WITH A MANUAL CONTROL SWITCH AND MANUAL CONTROL CHORD WITHIN THE POLICE DOOR COMPARTMENT. THIS WORK SHALL BE INCLUDED IN THE CONTROLLER CABINET PAY ITEM.

THE SURGE PROTECTOR IN THE CONTROLLER CABINET SHALL HAVE AN INDICATOR LIGHT.

COMMITMENTS:

STATE OF ILLINOIS
DEPARTMENT OF TRANSPORTATION
DISTRICT THREE
AS BUILT INFORMATION

SUPERVISING CONSTRUCTION FIELD ENGINEER

RESIDENT ENGINEER / TECHNICIAN

START & END DATES
OF CONSTRUCTION:

INSPECTORS:

STATE OF ILLINOIS
DEPARTMENT OF TRANSPORTATION
DISTRICT THREE

PREPARED BY: _____
DISTRICT STUDIES & PLANS ENGINEER

DATE: _____

EXAMINED BY: _____
DISTRICT CONSTRUCTION ENGINEER

DISTRICT MATERIALS ENGINEER

DISTRICT OPERATIONS ENGINEER

MODEL: \\MODELS\MATFS
FILE: \\matfs_c3p3\work\asbld\01budz\ymiskim\075023\0366M10-sh-cove.dgn

USER NAME = budzyskim	DESIGNED -	REVISED -
	DRAWN -	REVISED -
PLOT SCALE = 100.0000' / in.	CHECKED -	REVISED -
PLOT DATE = 2/10/2022	DATE -	REVISED -

**STATE OF ILLINOIS
DEPARTMENT OF TRANSPORTATION**

GENERAL NOTES

SCALE: SHEET OF SHEETS STA. TO STA.

F.A.P. RTE.	SECTION	COUNTY	TOTAL SHEETS	SHEET NO.
VAR	(L, M) T5, RR & (116) T5, RR	IROQUOIS	18	2
			CONTRACT NO. 66M10	
		ILLINOIS	FED. AID PROJECT	

CODE NO.	ITEM	UNIT	TOTAL QUANTITY	CONSTRUCTION CODE	
				IROQUOIS CO. 100% STATE	DEKALB CO. 100% STATE
				TRAFFIC SIGNALS 0021	TRAFFIC SIGNALS 0021
* 66900200	NON-SPECIAL WASTE DISPOSAL	CU YD	8	8	
* 66900530	SOIL DISPOSAL ANALYSIS	EACH	2	2	
* 66901001	REGULATED SUBSTANCES PRE-CONSTRUCTION PLAN	L SUM	1.0	1.0	
* 66901003	REGULATED SUBSTANCES FINAL CONSTRUCTION REPORT	L SUM	1.0	1.0	
* 66901006	REGULATED SUBSTANCES MONITORING	CAL DA	1	1	
67100100	MOBILIZATION	L SUM	1.0	0.8	0.2
70102635	TRAFFIC CONTROL AND PROTECTION, STANDARD 701701	L SUM	1.0	0.8	0.2
85000200	MAINTENANCE OF EXISTING TRAFFIC SIGNAL INSTALLATION	EACH	5	4	1
86200300	UNINTERRUPTABLE POWER SUPPLY, EXTENDED	EACH	4	4	
86400100	TRANSCIVER - FIBER OPTIC	EACH	4	4	
87301900	ELECTRIC CABLE IN CONDUIT, EQUIPMENT GROUNDING CONDUCTOR, NO. 6 1C	FOOT	100	100	
88500100	INDUCTIVE LOOP DETECTOR	EACH	34	34	
89502375	REMOVE EXISTING TRAFFIC SIGNAL EQUIPMENT	EACH	5	4	1
X1400168	RAILROAD, FULL-ACTUATED CONTROLLER AND TYPE SUPER P CABINET (SPECIAL)	EACH	3	3	

*= SPECIALTY ITEM

MODEL: \\MODELMARIES
FILE: \\maries_csm\work\sidejob\budzynskim\0750233\0366M10-shr-cover.dgn

USER NAME = budzynskim	DESIGNED -	REVISED -	STATE OF ILLINOIS DEPARTMENT OF TRANSPORTATION	SUMMARY OF QUANTITIES				F.A.P. RTE.	SECTION	COUNTY	TOTAL SHEETS	SHEET NO.
PLOT SCALE = 100.0000' / in.	DRAWN -	REVISED -						VAR	(L, M) TS, RR & (116) TS, RR	IROQUOIS	18	3
PLOT DATE = 2/14/2022	CHECKED -	REVISED -		SCALE:	SHEET	OF	SHEETS	STA.	TO STA.	CONTRACT NO. 66M10		
	DATE -	REVISED -								ILLINOIS FED. AID PROJECT		

CODE NO.	ITEM	UNIT	TOTAL QUANTITY	CONSTRUCTION CODE	
				IROQUOIS CO. 100% STATE	DEKALB CO. 100% STATE
				TRAFFIC SIGNALS 0021	TRAFFIC SIGNALS 0021
X1400214	SPARE RAILROAD, FULL ACTUATED CONTROLLER , SPECIAL	EACH	7	5	2
X8571217	RAILROAD, FULL-ACTUATED CONTROLLER AND TYPE STRETCH P CABINET (SPECIAL)	EACH	1	1	
X8950114	MODIFY EXISTING CONTROLLER AND CABINET	EACH	1		1

MODEL: \\MODELS\MARIES
 FILE: \\MARIES_CAD\work\sidejob\budzynskim\075023\0366M10-shr-cover.dwg

USER NAME = budzynskim	DESIGNED -	REVISED -
	DRAWN -	REVISED -
PLOT SCALE = 100.0000 ' / in.	CHECKED -	REVISED -
PLOT DATE = 2/14/2022	DATE -	REVISED -

**STATE OF ILLINOIS
DEPARTMENT OF TRANSPORTATION**

SUMMARY OF QUANTITIES

SCALE: SHEET OF SHEETS STA. TO STA.

F.A.P. RTE.	SECTION	COUNTY	TOTAL SHEETS	SHEET NO.
VAR	(L, M) TS, RR & (116) TS, RR	IROQUOIS	18	4
			CONTRACT NO. 66M10	
		ILLINOIS	FED. AID PROJECT	

SECOND ST (WATSEKA) - SCHEDULE OF QUANTITIES

ITEM DESCRIPTION	UNIT	QTY
MAINTENANCE OF EXISTING TRAFFIC SIGNAL INSTALLATION	EACH	1
UNINTERRUPTABLE POWER SUPPLY, EXTENDED	EACH	1
TRANSCEIVER - FIBER OPTIC	EACH	1
ELECTRIC CABLE IN CONDUIT, EQUIPMENT GROUNDING CONDUCTOR, NO. 6 1C	FOOT	25
INDUCTIVE LOOP DETECTOR	EACH	10
REMOVE EXISTING TRAFFIC SIGNAL EQUIPMENT	EACH	1
RAILROAD, FULL-ACTUATED CONTROLLER AND TYPE SUPER P CABINET (SPECIAL)	EACH	1
SPARE RAILROAD, FULL ACTUATED CONTROLLER , SPECIAL	EACH	1

THIRD ST (WATSEKA) - SCHEDULE OF QUANTITIES

ITEM DESCRIPTION	UNIT	QTY
MAINTENANCE OF EXISTING TRAFFIC SIGNAL INSTALLATION	EACH	1
UNINTERRUPTABLE POWER SUPPLY, EXTENDED	EACH	1
TRANSCEIVER - FIBER OPTIC	EACH	1
ELECTRIC CABLE IN CONDUIT, EQUIPMENT GROUNDING CONDUCTOR, NO. 6 1C	FOOT	25
INDUCTIVE LOOP DETECTOR	EACH	7
REMOVE EXISTING TRAFFIC SIGNAL EQUIPMENT	EACH	1
RAILROAD, FULL-ACTUATED CONTROLLER AND TYPE STRETCH P CABINET (SPECIAL)	EACH	1
SPARE RAILROAD, FULL ACTUATED CONTROLLER , SPECIAL	EACH	1

FOURTH ST (WATSEKA) - SCHEDULE OF QUANTITIES

ITEM DESCRIPTION	UNIT	QTY
MAINTENANCE OF EXISTING TRAFFIC SIGNAL INSTALLATION	EACH	1
UNINTERRUPTABLE POWER SUPPLY, EXTENDED	EACH	1
TRANSCEIVER - FIBER OPTIC	EACH	1
ELECTRIC CABLE IN CONDUIT, EQUIPMENT GROUNDING CONDUCTOR, NO. 6 1C	FOOT	25
INDUCTIVE LOOP DETECTOR	EACH	7
REMOVE EXISTING TRAFFIC SIGNAL EQUIPMENT	EACH	1
RAILROAD, FULL-ACTUATED CONTROLLER AND TYPE SUPER P CABINET (SPECIAL)	EACH	1
SPARE RAILROAD, FULL ACTUATED CONTROLLER , SPECIAL	EACH	1

FIFTH ST (WATSEKA) - SCHEDULE OF QUANTITIES

ITEM DESCRIPTION	UNIT	QTY
SPARE RAILROAD, FULL ACTUATED CONTROLLER , SPECIAL	EACH	1

EIGHTH ST (WATSEKA) - SCHEDULE OF QUANTITIES

ITEM DESCRIPTION	UNIT	QTY
MAINTENANCE OF EXISTING TRAFFIC SIGNAL INSTALLATION	EACH	1
UNINTERRUPTABLE POWER SUPPLY, EXTENDED	EACH	1
TRANSCEIVER - FIBER OPTIC	EACH	1
ELECTRIC CABLE IN CONDUIT, EQUIPMENT GROUNDING CONDUCTOR, NO. 6 1C	FOOT	25
INDUCTIVE LOOP DETECTOR	EACH	10
REMOVE EXISTING TRAFFIC SIGNAL EQUIPMENT	EACH	1
RAILROAD, FULL-ACTUATED CONTROLLER AND TYPE SUPER P CABINET (SPECIAL)	EACH	1
SPARE RAILROAD, FULL ACTUATED CONTROLLER , SPECIAL	EACH	1

US 30 AND ELM ST (WATERMAN) - SCHEDULE OF QUANTITIES

ITEM DESCRIPTION	UNIT	QTY
MAINTENANCE OF EXISTING TRAFFIC SIGNAL INSTALLATION	EACH	1
REMOVE EXISTING TRAFFIC SIGNAL EQUIPMENT	EACH	1
SPARE RAILROAD, FULL ACTUATED CONTROLLER , SPECIAL	EACH	2
MODIFY EXISTING CONTROLLER AND CABINET	EACH	1

US 30 AND ELM ST NOTES:

THE EXISTING CONTROLLER IN THE CABINET SHALL BE REMOVED AND REPLACED WITH A SPARE RAILROAD, FULL ACTUATED CONTROLLER, SPECIAL.

US 24/IL 1 AND THIRD ST, US 24/IL 1 AND FOURTH ST NOTES:

PEDESTRIAN PUSH BUTTONS ARE FOR THE NORTH/SOUTH DIRECTION. THE EAST/WEST DIRECTION IS IN PRETIMED MODE.

US 24/IL 1 AND FIFTH ST NOTES:

THE PROPOSED SPARE RAILROAD, FULL ACTUATED CONTROLLER, SPECIAL SHALL USE THE SAME SET UP AS THE CURRENT TRAFFIC SIGNAL CONTROLLER.

REMOVE EXISTING TRAFFIC SIGNAL CABINET:

ALL CONFLICT MONITORS AND LOOP DETECTOR AMPLIFIERS REMOVED SHALL BECOME THE PROPERTY OF THE STATE AND SHALL BE DELIVERED TO THE RESIDENT ENGINEER.

THE REMAINING TRAFFIC SIGNAL EQUIPMENT REMOVED SHALL BECOME THE PROPERTY OF THE CONTRACTOR AND THE ITEMS SHALL BE REMOVED, STORED, SALVAGED, AND DISPOSED OF OFF STATE ROW BY THE CONTRACTOR. THE BID PRICE SHALL INCLUDE ANY SALVAGE VALUE.

MODEL: \\MODELS\MAR15
FILE: \\mar15_csp\work\spw\bid\busby\busby\mktm\075023\036641\0-shr-cover.dgn

USER NAME = budzynskim	DESIGNED -	REVISED -
PLOT SCALE = 100.0000 ' / in.	DRAWN -	REVISED -
PLOT DATE = 2/10/2022	CHECKED -	REVISED -
	DATE -	REVISED -

STATE OF ILLINOIS
DEPARTMENT OF TRANSPORTATION

SCALE:		SHEET	OF	SHEETS	STA.	TO	STA.
--------	--	-------	----	--------	------	----	------

SCHEDULES

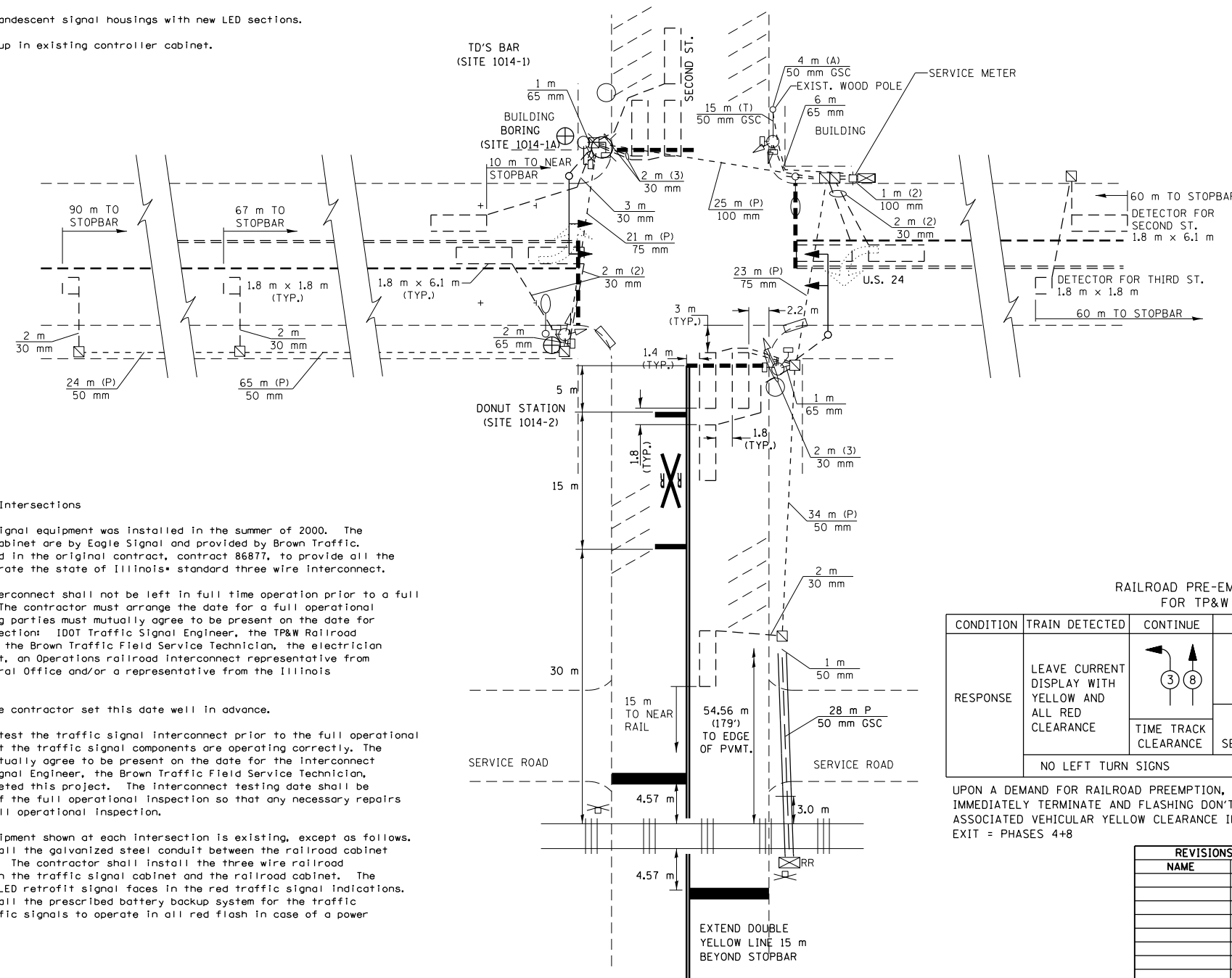
F.A.P. RTE.	SECTION	COUNTY	TOTAL SHEETS	SHEET NO.
VAR	(L, M) T5, RR & (116) T5, RR	IRROQUOIS	18	5
			CONTRACT NO. 66M10	
ILLINOIS FED. AID PROJECT				

FOR INFORMATION ONLY

TRAFFIC SIGNAL CONSTRUCTION SUMMARY • ALL INTERSECTIONS

1. Install the traffic signal conduit run between the existing handhole and the railroad cabinet.
2. The contractor shall connect the galvanized steel conduit to the existing PVC conduit stubbed out of the handhole. The contractor shall supply and install a compression coupling designed to connect PVC and galvanized conduit, included in the bid price of the galvanized steel conduit.
3. Install the traffic signal interconnect cable between the railroad cabinet and the traffic signal cabinet.
4. The traffic signal cabinet is designed to operate with the railroad interconnect. The contractor shall modify the cabinet as specified by the controller manufacturer representative for Brown Traffic to enable the railroad interconnect equipment in the traffic signal cabinet.
5. Work with the railroad to connect the railroad interconnect cable equipment to their equipment as the railroad specifies.
6. Retrofit existing incandescent signal housings with new LED sections.
7. Install Battery back-up in existing controller cabinet.

F.A.P. RTE.	SECTION	COUNTY	TOTAL SHEETS	SHEET NO.
49	0MITS-1	IROQUOIS		
STA.		TO STA.		
FED. ROAD DIST. NO.		ILLINOIS STATE AID PROJECT		



Construction Notes • All Intersections

1. The existing traffic signal equipment was installed in the summer of 2000. The existing controller and cabinet are by Eagle Signal and provided by Brown Traffic. Brown Traffic was required in the original contract, contract 86877, to provide all the cabinet components to operate the state of Illinois' standard three wire interconnect.
2. The traffic signal interconnect shall not be left in full time operation prior to a full operational inspection. The contractor must arrange the date for a full operational inspection. The following parties must mutually agree to be present on the date for the full operational inspection: IDOT Traffic Signal Engineer, the TP&W Railroad Field Service Technician, the Brown Traffic Field Service Technician, the electrician who completed this project, an Operations railroad interconnect representative from the IDOT Springfield Central Office and/or a representative from the Illinois Commerce Commission.

It is recommended that the contractor set this date well in advance.
3. The contractor shall test the traffic signal interconnect prior to the full operational inspection to confirm that the traffic signal components are operating correctly. The following parties must mutually agree to be present on the date for the interconnect testing: IDOT Traffic Signal Engineer, the Brown Traffic Field Service Technician, the electrician who completed this project. The interconnect testing date shall be sufficiently in advance of the full operational inspection so that any necessary repairs can be made before the full operational inspection.
4. All traffic signal equipment shown at each intersection is existing, except as follows. The contractor shall install the galvanized steel conduit between the railroad cabinet and the nearest handhole. The contractor shall install the three wire railroad interconnect cable between the traffic signal cabinet and the railroad cabinet. The contractor shall install LED retrofit signal faces in the red traffic signal indications. The contractor shall install the prescribed battery backup system for the traffic signals to allow the traffic signals to operate in all red flash in case of a power outage.

LEGEND

- ☒ EXIST. HANDHOLE
- ☒ EXIST. CONTROLLER
- EXIST. STEEL MAST ARM
- EXIST. SIGNAL POST
- ⬆ EXIST. SIGNAL HEAD
- ⬆ EXIST. PEDESTRIAN SIGNAL HEAD
- EXIST. UNDERGROUND CABLE
- ⊕ EXIST. ELECTRIC SERVICE
- [---] EXIST. DETECTOR LOOP
- LIGHT UNIT
- ⊗ RAILROAD CROSSBUCK
- ⊗ RR RAILROAD CONTROLLER
- ⊕ PROP. HANDHOLE
- ⊕ PROP. CONTROLLER
- PROP. SIGNAL POST
- ⬆ PROP. SIGNAL HEAD
- ⬆ PROP. PEDESTRIAN SIGNAL HEAD
- ≡≡≡ PROP. CONDUIT
- ⊕ PROP. SERVICE

RAILROAD PRE-EMPT SEQUENCE FOR TP&W TRACK

CONDITION	TRAIN DETECTED	CONTINUE	CONTINUE	CONTINUE	TRACK CLEARS
RESPONSE	LEAVE CURRENT DISPLAY WITH YELLOW AND ALL RED CLEARANCE				REMAIN IN NORMAL OPERATION
		TIME TRACK CLEARANCE	EXIT TRACK CLEARANCE SERVICE US24 EAST	HOLD	
		NO LEFT TURN SIGNS		LIGHT	

UPON A DEMAND FOR RAILROAD PREEMPTION, ANY ACTIVE WALK INDICATIONS SHALL IMMEDIATELY TERMINATE AND FLASHING DON'T WALK WILL BE LIMITED THROUGH THE ASSOCIATED VEHICULAR YELLOW CLEARANCE INTERVAL ONLY.
EXIT = PHASES 4+8

REVISIONS		ILLINOIS DEPARTMENT OF TRANSPORTATION
NAME	DATE	
		U.S. 24 & SECOND ST.

STATE OF ILLINOIS
DEPARTMENT OF TRANSPORTATION

PLAN VIEW
US 24 / IL 1 AND SECOND ST (WATSEKA)

SCALE: SHEET OF SHEETS STA. TO STA.

F.A.P. RTE.	SECTION	COUNTY	TOTAL SHEETS	SHEET NO.
VAR	(L, M) T5, RR & (116) T5, RR	IROQUOIS	18	7
CONTRACT NO. 66M10			ILLINOIS FED. AID PROJECT	

MODEL: 440DFE1M1M1S
FILE: 440DFE1M1M1S.dwg
DATE: 2/10/2022

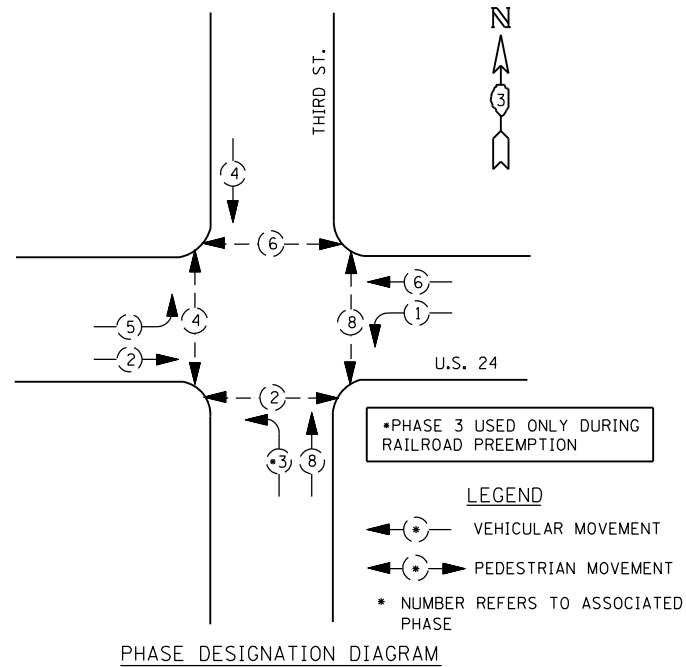
USER NAME = budzynskim	DESIGNED -	REVISED -
PLOT SCALE = 100,0000' / in.	DRAWN -	REVISED -
PLOT DATE = 2/10/2022	CHECKED -	REVISED -
	DATE -	REVISED -

FOR INFORMATION ONLY

F.A.P. RTE.	SECTION	COUNTY	TOTAL SHEETS	SHEET NO.
49	(MITS-1)	IROQUOIS		
STA.	TO STA.			
FED. ROAD DIST. NO.	ILLINOIS STATE AID PROJECT			

CONTROLLER SEQUENCE
 NAME OF INTERSECTION: U.S. 24 & THIRD STREET
 CONTROLLER SPECIFIED: _____

REFERRING TO STANDARD 2393, THE VEHICULAR AND PEDESTRIAN PHASES USED ARE DESIGNATED BELOW.
 (SHOW MOVEMENTS AND PHASE NUMBERS)



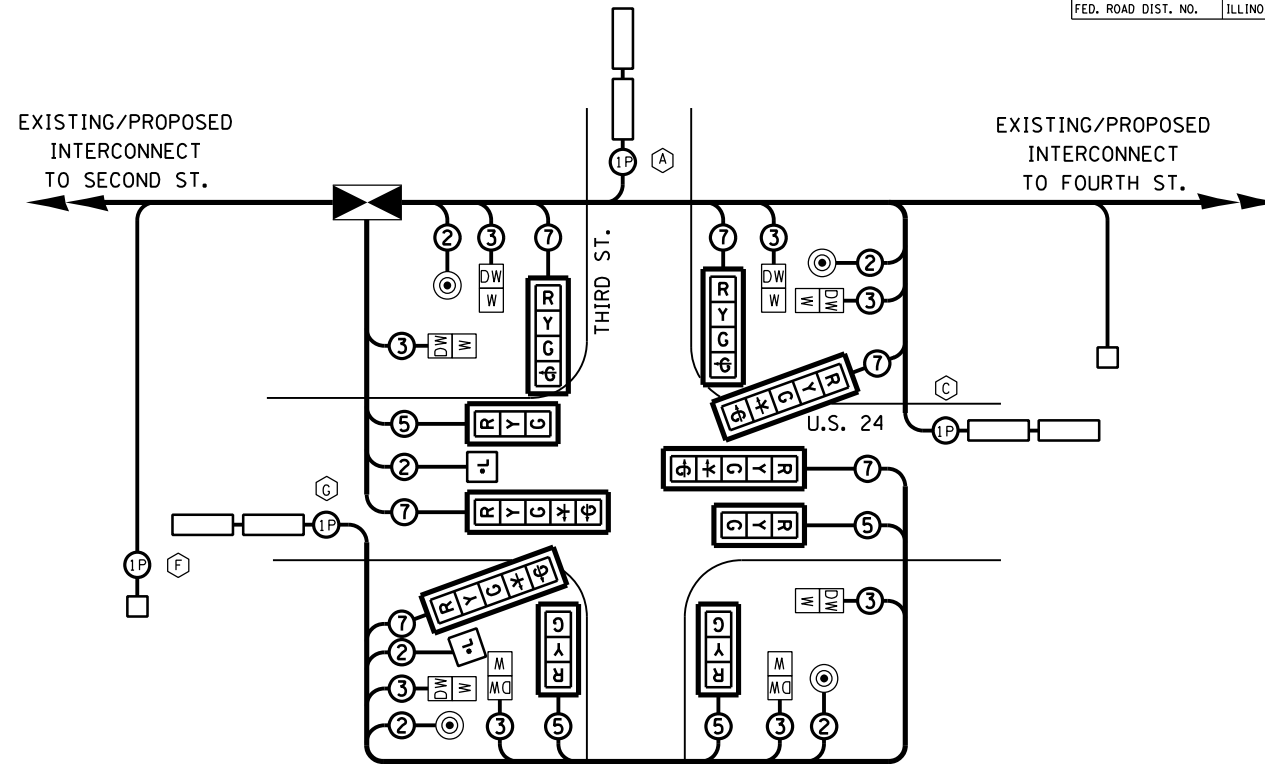
THIRD STREET - EXISTING

DETECTOR LOOP LABEL CHART

LOOP SYSTEM	DETECTOR LABEL	DETECTOR ASSIGNMENT	PHASE INPUT	NUMBER OF TURNS	INDUCTANCE (μH)	FREQUENCY Hertz	J PIN STATUS
A	SB	4	4	3	318	34217	ON
B	WB FAR	6	6	5	203	42849	ON
C	WBLT	1	1	3	322	34029	ON
D	NB	8	8	3	329	33629	ON
E	NB FAR	16	8 PED	4	280	36487	OFF
F	EB FAR	2	2	5	196	43564	ON
G	EBLT	5	5	3	323	33960	ON
H	SB NW PED	20	4	NA	NA	NA	NA
I	SB NE PED	23	8	NA	NA	NA	NA
J	NB SE PED	24	8	NA	NA	NA	NA
K	NB SW PED	19	4	NA	NA	NA	NA

J PIN STATUS: 'ON' means standard detector setup. 'OFF' means J wire has been disconnected, but intact, at the harness panel with the necessary spade connection attached, marked, and insulated.

DETECTOR ASSIGNMENT: Detector inputs shall be assigned to the distinct detector inputs. Detector assignments 1-8 are 'Standard Detectors'. Detector assignments 9-16 are 'Special Detectors'. Detector assignments 17-24 are 'Pedestrian Detectors'.



CABLE PLAN

NOTE: ALL CABLE SHOWN IS EXISTING WITH THE FOLLOWING EXCEPTIONS. COMMUNICATION CABLE BETWEEN TRAFFIC SIGNAL CABINET AND RAILROAD CABINET: ELECTRICAL CABLE TO NO LEFT TURN SIGNS

CABLE PLAN LEGEND

PROPOSED

- 12" TRAFFIC SIGNAL SECTION
- LEFT TURN YELLOW
- LEFT TURN GREEN
- WALK/DON'T WALK SECTION
- CONTROLLER CABINET
- VEHICLE DETECTOR, INDUCTION LOOP
- ELECTRIC CABLE IN CONDUIT
 - * DENOTES NUMBER OF CONDUCTORS
 - *P DENOTES NUMBER OF PAIRS IN TWISTED SHIELDED CABLE
 - *C DENOTES NUMBER OF PAIRS IN NO. 16 COMMUNICATION CABLE
- TRAFFIC SIGNAL WITH BACKPLATE
- PEDESTRIAN DETECTOR, SPECIAL
 - *L = FIBEROPTIC NO LEFT TURN SIGN
 - *R = FIBEROPTIC NO RIGHT TURN SIGN

ELECTRICAL LOAD FOR US 24 & THIRD STREET

US 24	NUMBER	WATTAGE EACH	BURN TIME (%)
RED	4	10.5	49
YELLOW	4	25	8
GREEN	4	18	43
YELLOW ARROW	4	9	2
GREEN ARROW	4	6	3
WALK	4	5	20
DON'T WALK	4	7	80
NO LEFT TURN	2	200	1.5

THIRD STREET	NUMBER	WATTAGE EACH	BURN TIME (%)
RED	4	10.5	57
YELLOW	4	25	8
GREEN	4	18	35
GREEN ARROW	2	6	1
WALK	4	5	13
DON'T WALK	4	7	87

TRAFFIC SIGNAL CABINET	NUMBER	WATTAGE EACH	BURN TIME (%)
CONTROLLER	1	6	100
DETECTORS	7	4	100
PED DETECTORS	4	4	100

Agency Responsible for Energy Charges: City of Watseka, 231 East Oak Street, Watseka, Illinois 60970, 815-468-8224.

REVISIONS

NAME	DATE

ILLINOIS DEPARTMENT OF TRANSPORTATION

**TRAFFIC DETAILS
 THIRD ST.**

DRAWN BY _____
 CHECKED BY _____
 DATE _____

MODEL: 440DELMARIES
 FILE: 440de_mars_cable_plan_001.dwg
 USER: budzynskim
 PLOT DATE: 2/10/2022

USER NAME = budzynskim	DESIGNED -	REVISED -
	DRAWN -	REVISED -
PLOT SCALE = 100,0000' / in.	CHECKED -	REVISED -
PLOT DATE = 2/10/2022	DATE -	REVISED -

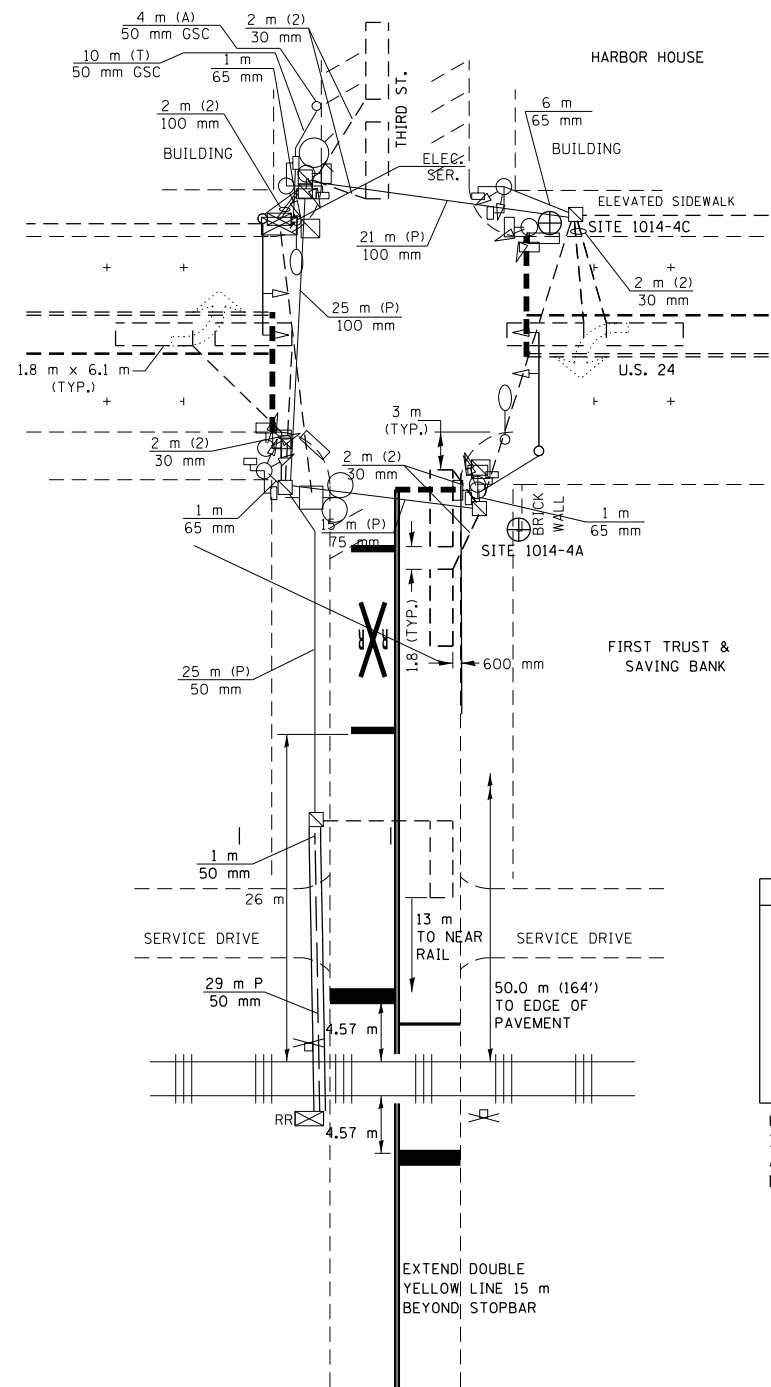
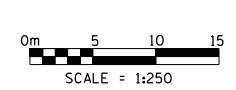
STATE OF ILLINOIS
 DEPARTMENT OF TRANSPORTATION

CABLE PLAN AND PHASE DIAGRAM US 24 / IL 1 AND THIRD ST (WATSEKA)	
SCALE:	SHEET OF SHEETS STA. TO STA.

F.A.P. RTE.	SECTION	COUNTY	TOTAL SHEETS	SHEET NO.
VAR	(L, M) T5, RR & (116) T5, RR	IROQUOIS	18	8
CONTRACT NO. 66M10			ILLINOIS FED. AID PROJECT	

FOR INFORMATION ONLY

F.A.P. RTE.	SECTION	COUNTY	TOTAL SHEETS	SHEET NO.
49	0MITS-1	IROQUOIS		
STA.		TO STA.		
FED. ROAD DIST. NO.	ILLINOIS STATE AID PROJECT			



LEGEND

- EXIST. HANDHOLE
- EXIST. CONTROLLER
- EXIST. STEEL MAST ARM
- EXIST. SIGNAL POST
- EXIST. SIGNAL HEAD
- EXIST. PEDESTRIAN SIGNAL HEAD
- EXIST. UNDERGROUND CABLE
- EXIST. ELECTRIC SERVICE
- EXIST. DETECTOR LOOP
- EXIST. CONDUIT
- LIGHT UNIT
- RAILROAD CROSSBUCK
- RAILROAD CONTROLLER
- PROP. HANDHOLE
- PROP. CONTROLLER
- PROP. SIGNAL POST
- PROP. SIGNAL HEAD
- PROP. PEDESTRIAN SIGNAL HEAD
- PROP. CONDUIT
- PROP. SERVICE

RAILROAD PRE-EMPT SEQUENCE FOR TP&W TRACK

CONDITION	TRAIN DETECTED	CONTINUE	CONTINUE	CONTINUE	TRACK CLEARS
RESPONSE	LEAVE CURRENT DISPLAY WITH YELLOW AND ALL RED CLEARANCE				REMAIN IN NORMAL OPERATION
		TIME TRACK CLEARANCE	EXIT TRACK CLEARANCE SERVICE US24 EAST	HOLD	
		NO LEFT TURN SIGNS		LIGHT	

UPON A DEMAND FOR RAILROAD PREEMPTION, ANY ACTIVE WALK INDICATIONS SHALL IMMEDIATELY TERMINATE AND FLASHING DON'T WALK WILL BE LIMITED THROUGH THE ASSOCIATED VEHICULAR YELLOW CLEARANCE INTERVAL ONLY.
EXIT = PHASES 4+8

REVISIONS

NAME	DATE

ILLINOIS DEPARTMENT OF TRANSPORTATION
U.S. 24 & THIRD ST.

MODEL: I:\MODELS\MARIS FILE: MARIS_CADD\work\side\10075023\1036641\0-sh-covr.dgn

USER NAME = budzynskim	DESIGNED -	REVISED -
	DRAWN -	REVISED -
PLOT SCALE = 100.0000' / in.	CHECKED -	REVISED -
PLOT DATE = 2/10/2022	DATE -	REVISED -

STATE OF ILLINOIS
DEPARTMENT OF TRANSPORTATION

PLAN VIEW	
US 24 / IL 1 AND THIRD ST (WATSEKA)	
SCALE:	SHEET OF SHEETS STA. TO STA.

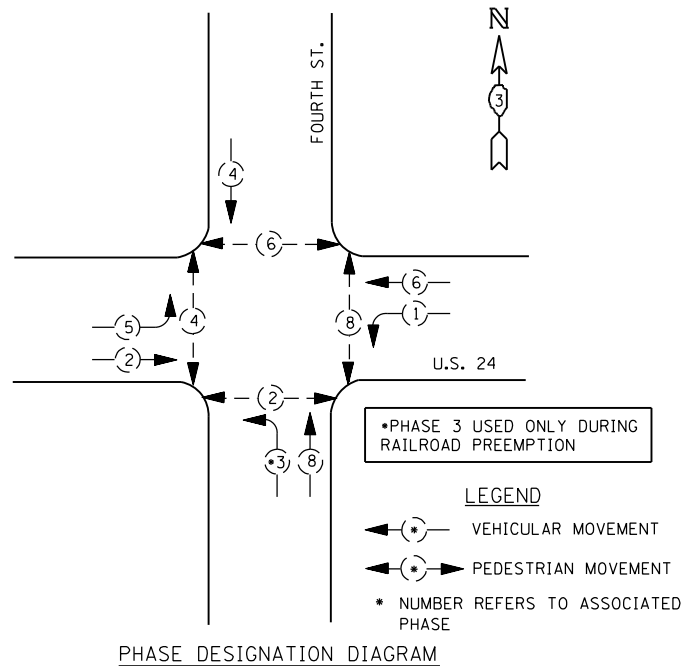
F.A.P. RTE.	SECTION	COUNTY	TOTAL SHEETS	SHEET NO.
VAR	(L, M) T5, RR & (116) T5, RR	IROQUOIS	18	9
			CONTRACT NO. 66M10	
		ILLINOIS	FED. AID PROJECT	

FOR INFORMATION ONLY

F.A.P. RTE.	SECTION	COUNTY	TOTAL SHEETS	SHEET NO.
49	(MITS-1)	IROQUOIS		
STA.	TO STA.			
FED. ROAD DIST. NO.	ILLINOIS STATE AID PROJECT			

CONTROLLER SEQUENCE
 NAME OF INTERSECTION: **U.S. 24 & FOURTH STREET**
 CONTROLLER SPECIFIED: _____

REFERRING TO STANDARD 2393, THE VEHICULAR AND PEDESTRIAN PHASES USED ARE DESIGNATED BELOW. (SHOW MOVEMENTS AND PHASE NUMBERS)



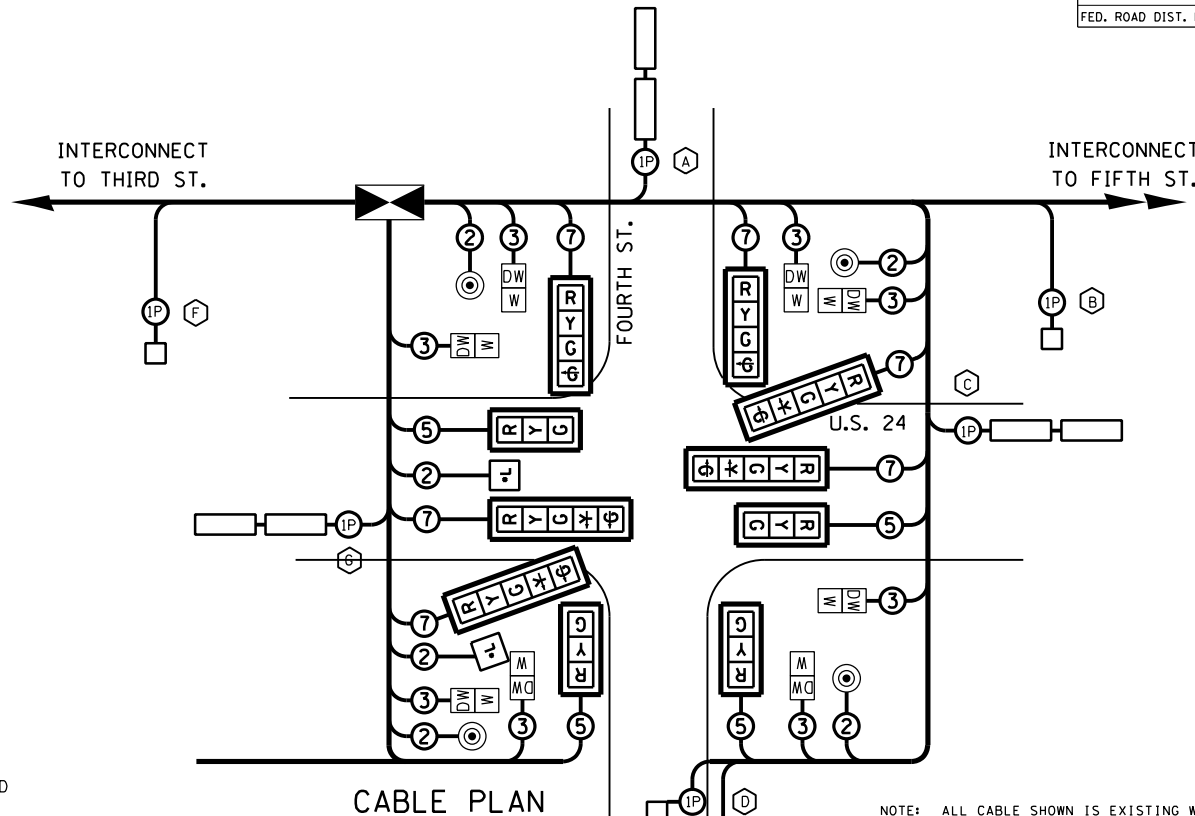
FOURTH STREET - EXISTING

DETECTOR LOOP LABEL CHART

LOOP SYSTEM	DETECTOR LABEL	DETECTOR ASSIGNMENT	PHASE INPUT	NUMBER OF TURNS	INDUCTANCE (uH)	FREQUENCY Hertz	J PIN STATUS
A	SB	4	4	3	316	34312	ON
B	WB FAR	6	6	5	209	42258	ON
C	WBLT	1	1	3	322	34006	ON
D	NB	8	8	3	327	33776	ON
E	NB FAR	16	8 PED	4	279	36530	OFF
F	EB FAR	2	2	5	196	43564	ON
G	EBLT	5	5	3	325	33867	ON
H	SB NW PED	20	4	NA	NA	NA	NA
I	SB NE PED	23	8	NA	NA	NA	NA
J	NB SE PED	24	8	NA	NA	NA	NA
K	NB SW PED	19	4	NA	NA	NA	NA

J PIN STATUS: 'ON' means standard detector setup. 'OFF' means J wire has been disconnected, but intact, at the harness panel with the necessary spade connection attached, marked, and insulated.

DETECTOR ASSIGNMENT: Detector inputs shall be assigned to the distinct detector inputs. Detector assignments 1-8 are 'Standard Detectors'. Detector assignments 9-16 are 'Special Detectors'. Detector assignments 17-24 are 'Pedestrian Detectors'.



CABLE PLAN

CABLE PLAN LEGEND

PROPOSED

- 12" TRAFFIC SIGNAL SECTION
- LEFT TURN YELLOW
- LEFT TURN GREEN
- WALK/DON'T WALK SECTION
- CONTROLLER CABINET
- VEHICLE DETECTOR, INDUCTION LOOP
- ELECTRIC CABLE IN CONDUIT
 - DENOTES NUMBER OF CONDUCTORS
 - P DENOTES NUMBER OF PAIRS IN TWISTED SHIELDED CABLE
 - C DENOTES NUMBER OF PAIRS IN NO. 16 COMMUNICATION CABLE
- ALL CABLE NO. 14 EXCEPT AS INDICATED
- TRAFFIC SIGNAL WITH BACKPLATE
- PEDESTRIAN DETECTOR, SPECIAL
- *L = FIBEROPTIC NO LEFT TURN SIGN
*R = FIBEROPTIC NO RIGHT TURN SIGN

ELECTRICAL LOAD FOR US 24 & FOURTH STREET

US 24	NUMBER	WATTAGE EACH	BURN TIME (%)
RED	4	10.5	49
YELLOW	4	25	8
GREEN	4	18	43
YELLOW ARROW	4	9	2
GREEN ARROW	4	6	3
WALK	4	5	20
DON'T WALK	4	7	80
NO LEFT TURN	2	200	1.5

FOURTH STREET	NUMBER	WATTAGE EACH	BURN TIME (%)
RED	4	10.5	57
YELLOW	4	25	8
GREEN	4	18	35
GREEN ARROW	2	6	1
WALK	4	5	13
DON'T WALK	4	7	87

TRAFFIC SIGNAL CABINET	NUMBER	WATTAGE EACH	BURN TIME (%)
CONTROLLER	1	6	100
DETECTORS	7	4	100
PED DETECTORS	4	4	100

Agency Responsible for Energy Charges: City of Watseka, 231 East Oak Street, Watseka, Illinois 60970. 815-468-8224.

REVISIONS	
NAME	DATE

ILLINOIS DEPARTMENT OF TRANSPORTATION
TRAFFIC DETAILS
FOURTH ST.
 DRAWN BY _____
 CHECKED BY _____
 DATE _____

MODEL: I:\MODELS\MAR15... FILE: I:\MAR15... WORKSPACE\110750233\0366M10-01-01-01.dwg

USER NAME = budzynskim	DESIGNED -	REVISED -
	DRAWN -	REVISED -
PLOT SCALE = 100.0000' / in.	CHECKED -	REVISED -
PLOT DATE = 2/10/2022	DATE -	REVISED -

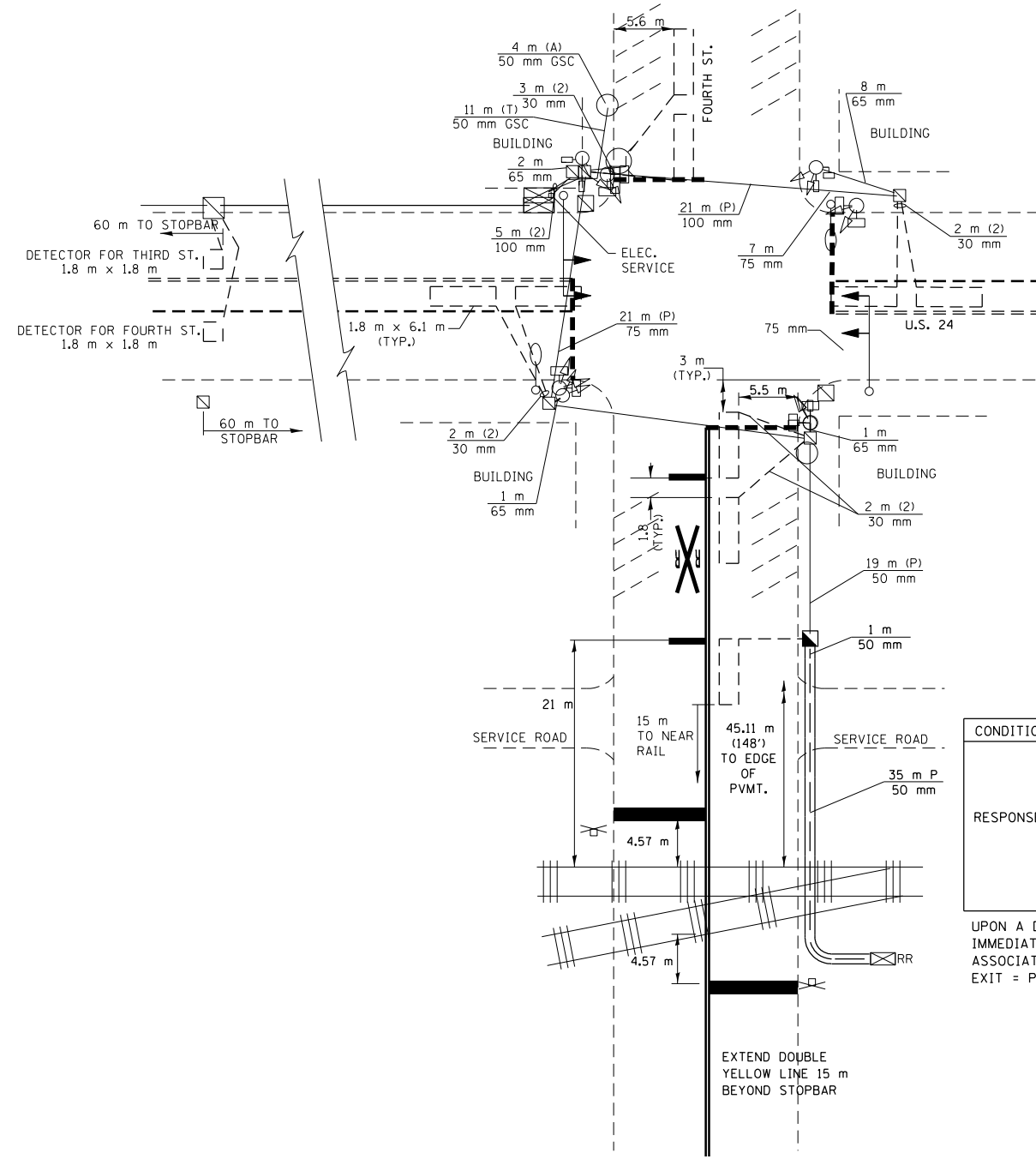
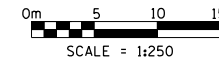
STATE OF ILLINOIS
 DEPARTMENT OF TRANSPORTATION

CABLE PLAN AND PHASE DIAGRAM			
US 24 / IL 1 AND EIGHTH ST (WATSEKA)			
SCALE:	SHEET	OF SHEETS	STA. TO STA.

F.A.P. RTE.	SECTION	COUNTY	TOTAL SHEETS	SHEET NO.
VAR	(L, M) T5, RR & (116) T5, RR	IROQUOIS	18	10
CONTRACT NO. 66M10			ILLINOIS FED. AID PROJECT	

FOR INFORMATION ONLY

F.A.P. RTE.	SECTION	COUNTY	TOTAL SHEETS	SHEET NO.
49	(MITS-1)	IROQUOIS		
STA.		TO STA.		
FED. ROAD DIST. NO.		ILLINOIS STATE AID PROJECT		



LEGEND

- EXIST. HANDHOLE
- EXIST. CONTROLLER
- EXIST. STEEL MAST ARM
- EXIST. SIGNAL POST
- EXIST. SIGNAL HEAD
- EXIST. PEDESTRIAN SIGNAL HEAD
- EXIST. UNDERGROUND CABLE
- EXIST. ELECTRIC SERVICE
- EXIST. DETECTOR LOOP
- LIGHT UNIT
- RAILROAD CROSSBUCK
- RAILROAD CONTROLLER
- PROP. HANDHOLE
- PROP. CONTROLLER
- PROP. SIGNAL POST
- PROP. SIGNAL HEAD
- PROP. PEDESTRIAN SIGNAL HEAD
- PROP. CONDUIT
- PROP. SERVICE

RAILROAD PRE-EMPT SEQUENCE FOR TP&W TRACK

CONDITION	TRAIN DETECTED	CONTINUE	CONTINUE	CONTINUE	TRACK CLEARS
RESPONSE	LEAVE CURRENT DISPLAY WITH YELLOW AND ALL RED CLEARANCE				REMAIN IN NORMAL OPERATION
		TIME TRACK CLEARANCE	EXIT TRACK CLEARANCE SERVICE US24 EAST	HOLD	
		NO LEFT TURN SIGNS		LIGHT	

UPON A DEMAND FOR RAILROAD PREEMPTION, ANY ACTIVE WALK INDICATIONS SHALL IMMEDIATELY TERMINATE AND FLASHING DON'T WALK WILL BE LIMITED THROUGH THE ASSOCIATED VEHICULAR YELLOW CLEARANCE INTERVAL ONLY.
EXIT = PHASES 4+8

REVISIONS	
NAME	DATE

ILLINOIS DEPARTMENT OF TRANSPORTATION
U.S. 24 & FOURTH ST.

MODEL: I:\MODELS\MAR15... FILE: I:\MAR15..._work\p1\p1budzynskim\075023\0366M10-sh-covr.dwg

USER NAME = budzynskim	DESIGNED -	REVISED -
PLOT SCALE = 100.0000' / in.	DRAWN -	REVISED -
PLOT DATE = 2/10/2022	CHECKED -	REVISED -
	DATE -	REVISED -

STATE OF ILLINOIS
DEPARTMENT OF TRANSPORTATION

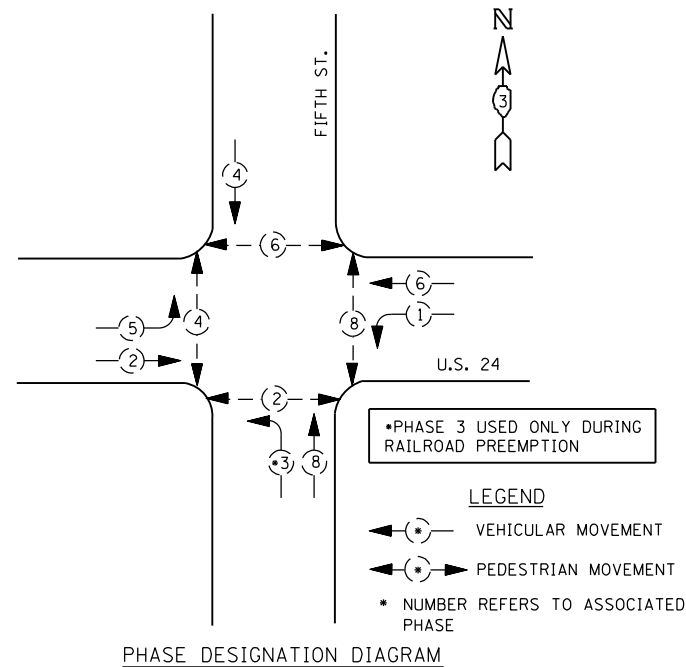
PLAN VIEW	
US 24 / IL 1 AND EIGHTH ST (WATSEKA)	
SCALE:	SHEET OF SHEETS STA. TO STA.

F.A.P. RTE.	SECTION	COUNTY	TOTAL SHEETS	SHEET NO.
VAR	(L, M) T5, RR & (116) T5, RR	IROQUOIS	18	11
CONTRACT NO. 66M10			ILLINOIS FED. AID PROJECT	

FOR INFORMATION ONLY

F.A.P. RTE.	SECTION	COUNTY	TOTAL SHEETS	SHEET NO.
49	(MITS-1)	IROQUOIS		
STA.		TO STA.		
FED. ROAD DIST. NO.		ILLINOIS STATE AID PROJECT		

CONTROLLER SEQUENCE
 NAME OF INTERSECTION: **U.S. 24 & FIFTH STREET**
 CONTROLLER SPECIFIED: _____
 REFERRING TO STANDARD 2393, THE VEHICULAR AND PEDESTRIAN PHASES USED ARE DESIGNATED BELOW. (SHOW MOVEMENTS AND PHASE NUMBERS)

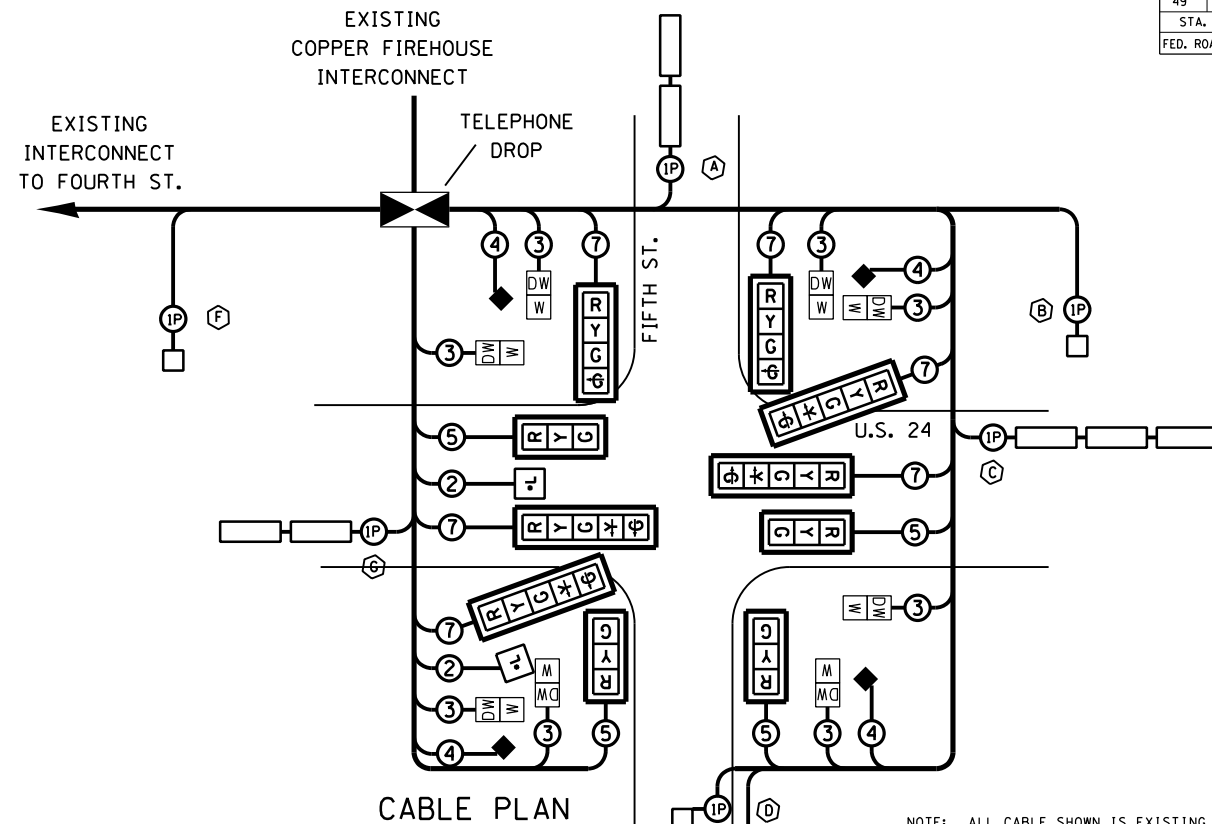


FIFTH STREET - EXISTING
 DETECTOR LOOP LABEL CHART

LOOP SYSTEM	DETECTOR LABEL	DETECTOR ASSIGNMENT	PHASE INPUT	NUMBER OF TURNS	INDUCTANCE (uH)	FREQUENCY Hertz	J PIN STATUS
A	SB	4	4	3	318	34217	ON
B	WB FAR	6	6	5	203	42849	ON
C	WBLT	1	1	3	393	30806	ON
D	NB	8	8	3	329	33629	ON
E	NB FAR	16	8 PED	4	280	36487	OFF
F	EB FAR	2	2	5	196	43564	ON
G	EBLT	5	5	3	323	33960	ON
H	SB NW PED	20	4	NA	NA	NA	NA
I	SB NE PED	23	8	NA	NA	NA	NA
J	NB SE PED	24	8	NA	NA	NA	NA
K	NB SW PED	19	4	NA	NA	NA	NA

J PIN STATUS: 'ON' means standard detector setup. 'OFF' means J wire has been disconnected, but intact, at the harness panel with the necessary spade connection attached, marked, and insulated.

DETECTOR ASSIGNMENT: Detector inputs shall be assigned to the distinct detector inputs. Detector assignments 1-8 are 'Standard Detectors'. Detector assignments 9-16 are 'Special Detectors'. Detector assignments 17-24 are 'Pedestrian Detectors'.



- CABLE PLAN LEGEND**
- PROPOSED
- 12" TRAFFIC SIGNAL SECTION
 - LEFT TURN YELLOW
 - LEFT TURN GREEN
 - WALK/DON'T WALK SECTION
 - CONTROLLER CABINET
 - VEHICLE DETECTOR, INDUCTION LOOP
 - ELECTRIC CABLE IN CONDUIT
 - DENOTES NUMBER OF CONDUCTORS
 - P DENOTES NUMBER OF PAIRS IN TWISTED SHIELDED CABLE
 - C DENOTES NUMBER OF PAIRS IN NO. 16 COMMUNICATION CABLE
 - ALL CABLE NO. 14 EXCEPT AS INDICATED
 - TRAFFIC SIGNAL WITH BACKPLATE
 - PEDESTRIAN DETECTOR, SPECIAL
 - L = FIBEROPTIC NO LEFT TURN SIGN
 - R = FIBEROPTIC NO RIGHT TURN SIGN

NOTE: ALL CABLE SHOWN IS EXISTING WITH THE FOLLOWING EXCEPTIONS. COMMUNICATION CABLE BETWEEN TRAFFIC SIGNAL CABINET AND RAILROAD CABINET: ELECTRICAL CABLE TO NO LEFT TURN SIGNS

ELECTRICAL LOAD FOR US 24 & FIFTH STREET

US 24	NUMBER	WATTAGE EACH	BURN TIME (%)
RED	4	10.5	49
YELLOW	4	25	8
GREEN	4	18	43
YELLOW ARROW	4	9	2
GREEN ARROW	4	6	3
WALK	4	5	20
DON'T WALK	4	7	80
NO LEFT TURN	2	200	1.5

FIFTH STREET	NUMBER	WATTAGE EACH	BURN TIME (%)
RED	4	10.5	57
YELLOW	4	25	8
GREEN	4	18	35
GREEN ARROW	2	6	1
WALK	4	5	13
DON'T WALK	4	7	87

TRAFFIC SIGNAL CABINET	NUMBER	WATTAGE EACH	BURN TIME (%)
MASTER CONTROLLER	1	6	100
CONTROLLER	1	6	100
DETECTORS	7	4	100
PED DETECTORS	4	4	100

Agency Responsible for Energy Charges: City of Watseka, 231 East Oak Street, Watseka, Illinois 60970. 815-468-8224.

REVISIONS		ILLINOIS DEPARTMENT OF TRANSPORTATION
NAME	DATE	
		<p>TRAFFIC DETAILS</p> <p>FIFTH ST.</p> <p>DRAWN BY _____</p> <p>CHECKED BY _____</p> <p>DATE _____</p>

MODEL: 4400E1MAMF5
 FILE: 4400E1MAMF5.dwg
 USER: budzynskim
 DATE: 2/10/2022

USER NAME = budzynskim	DESIGNED -	REVISED -
	DRAWN -	REVISED -
PLOT SCALE = 100,0000' / in.	CHECKED -	REVISED -
PLOT DATE = 2/10/2022	DATE -	REVISED -

STATE OF ILLINOIS
 DEPARTMENT OF TRANSPORTATION

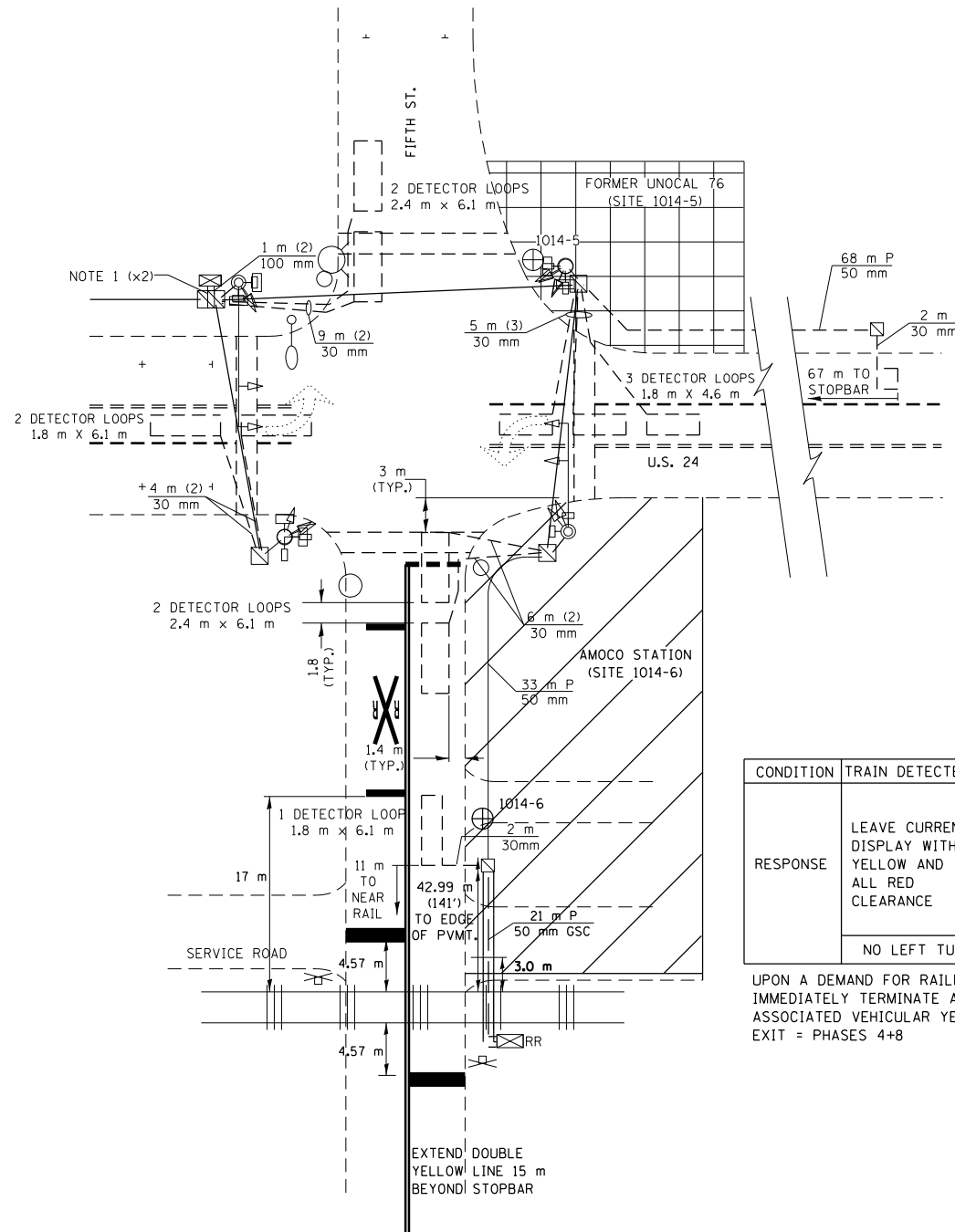
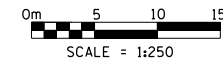
CABLE PLAN AND PHASE DIAGRAM
US 24 / IL 1 AND EIGHTH ST (WATSEKA)

SCALE: SHEET OF SHEETS STA. TO STA.

F.A.P. RTE.	SECTION	COUNTY	TOTAL SHEETS	SHEET NO.
VAR	(L, M) T5, RR & (116) T5, RR	IROQUOIS	18	12
CONTRACT NO. 66M10			ILLINOIS FED. AID PROJECT	

FOR INFORMATION ONLY

F.A.P. RTE.	SECTION	COUNTY	TOTAL SHEETS	SHEET NO.
49	0MITS-1	IROQUOIS		
STA.		TO STA.		
FED. ROAD DIST. NO.	ILLINOIS STATE AID PROJECT			



LEGEND

- EXIST. HANDHOLE
- EXIST. CONTROLLER
- EXIST. STEEL MAST ARM
- EXIST. SIGNAL POST
- EXIST. SIGNAL HEAD
- EXIST. PEDESTRIAN SIGNAL HEAD
- EXIST. UNDERGROUND CABLE
- EXIST. ELECTRIC SERVICE
- EXIST. DETECTOR LOOP
- LIGHT UNIT
- RAILROAD CROSSBUCK
- RAILROAD CONTROLLER
- PROP. HANDHOLE
- PROP. CONTROLLER
- PROP. SIGNAL POST
- PROP. SIGNAL HEAD
- PROP. PEDESTRIAN SIGNAL HEAD
- PROP. CONDUIT
- PROP. SERVICE

RAILROAD PRE-EMPT SEQUENCE FOR TP&W TRACK

CONDITION	TRAIN DETECTED	CONTINUE	CONTINUE	CONTINUE	TRACK CLEARS
RESPONSE	LEAVE CURRENT DISPLAY WITH YELLOW AND ALL RED CLEARANCE				REMAIN IN NORMAL OPERATION
		TIME TRACK CLEARANCE	EXIT TRACK CLEARANCE SERVICE US24 EAST	HOLD	
		NO LEFT TURN SIGNS		LIGHT	

UPON A DEMAND FOR RAILROAD PREEMPTION, ANY ACTIVE WALK INDICATIONS SHALL IMMEDIATELY TERMINATE AND FLASHING DON'T WALK WILL BE LIMITED THROUGH THE ASSOCIATED VEHICULAR YELLOW CLEARANCE INTERVAL ONLY.
EXIT = PHASES 4+8

REVISIONS

NAME	DATE

ILLINOIS DEPARTMENT OF TRANSPORTATION
U.S. 24 & FIFTH ST.

MODEL: I:\MODELS\MAR15... FILE: MAR15... WORKSPACE: I:\budymskim\075023\0366M10-sh-covr.dgn

USER NAME = budymskim	DESIGNED -	REVISED -
PLOT SCALE = 100.0000' / in.	DRAWN -	REVISED -
PLOT DATE = 2/10/2022	CHECKED -	REVISED -
	DATE -	REVISED -

STATE OF ILLINOIS
DEPARTMENT OF TRANSPORTATION

PLAN VIEW	
US 24 / IL 1 AND EIGHTH ST (WATSEKA)	
SCALE:	SHEET OF SHEETS STA. TO STA.

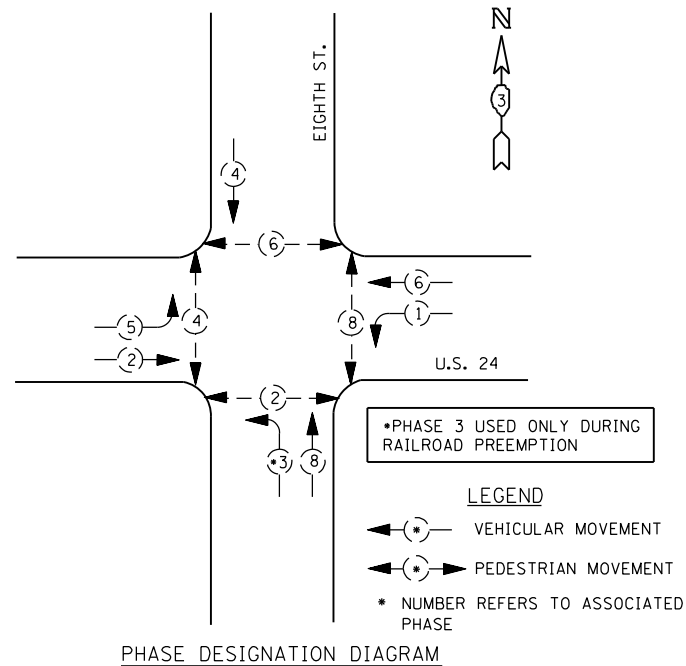
F.A.P. RTE.	SECTION	COUNTY	TOTAL SHEETS	SHEET NO.
VAR	(L, M) T5, RR & (116) T5, RR	IROQUOIS	18	13
CONTRACT NO. 66M10			ILLINOIS FED. AID PROJECT	

FOR INFORMATION ONLY

F.A.P. RTE.	SECTION	COUNTY	TOTAL SHEETS	SHEET NO.
49	(MITS-1)	IROQUOIS		
STA.		TO STA.		
FED. ROAD DIST. NO.		ILLINOIS STATE AID PROJECT		

CONTROLLER SEQUENCE
 NAME OF INTERSECTION: **U.S. 24 & EIGHTH STREET**
 CONTROLLER SPECIFIED: _____

REFERRING TO STANDARD 2393, THE VEHICULAR AND PEDESTRIAN PHASES USED ARE DESIGNATED BELOW. (SHOW MOVEMENTS AND PHASE NUMBERS)



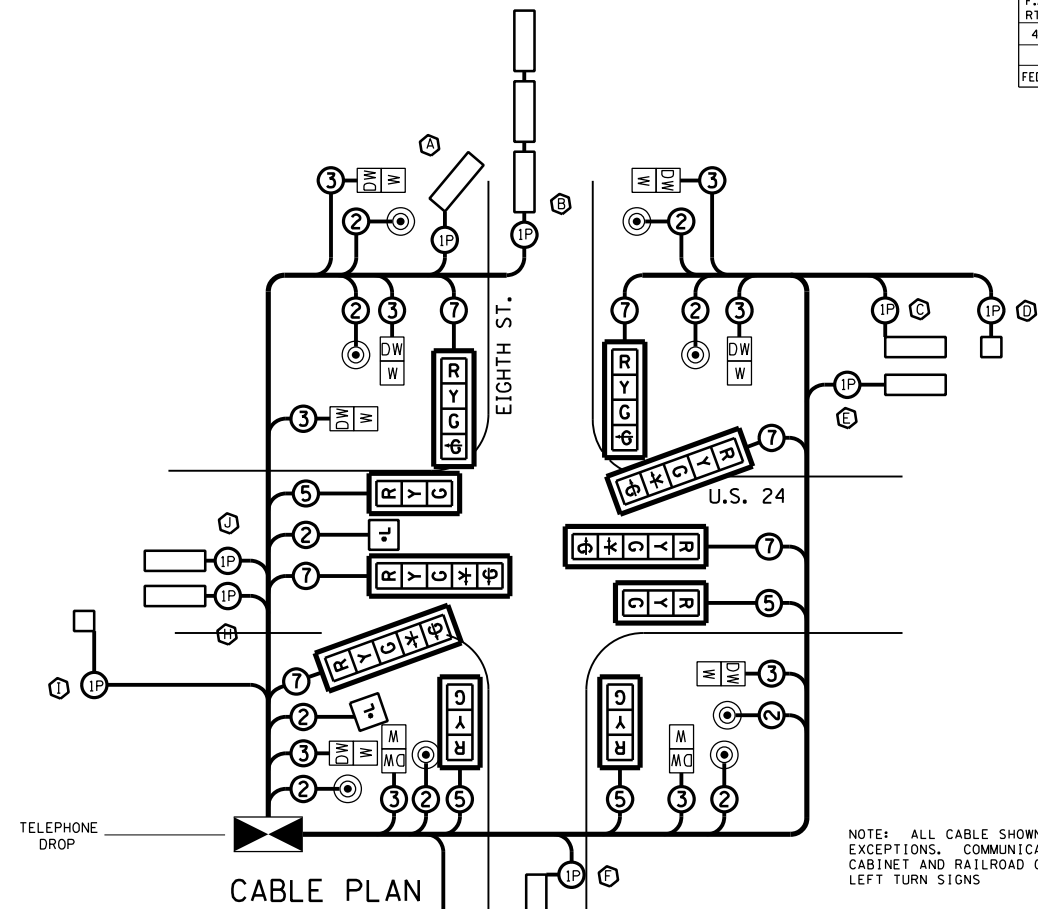
EIGHTH STREET - EXISTING

DETECTOR LOOP LABEL CHART

LOOP SYSTEM	DETECTOR LABEL	DETECTOR ASSIGNMENT	PHASE INPUT	NUMBER OF TURNS	INDUCTANCE (uH)	FREQUENCY Hertz	J PIN STATUS
A	SBRT	12	4	3	164	47606	OFF
B	SB	4	4	3	324	33902	ON
C	WB ST BR	14	6	*	*	*	OFF
D	WB FAR	6	6	*	*	*	ON
E	WBLT	1	1	*	*	*	ON
F	NB	8	8	3	324	33902	ON
G	NB FAR	16	SYS	4	277	36704	OFF
H	EB ST BR	10	2	*	*	*	OFF
I	EB FAR	2	2	*	*	*	ON
J	EBLT	5	5	*	*	*	ON
K	SB NW PED	20	4	NA	NA	NA	NA
L	SB NE PED	23	8	NA	NA	NA	NA
M	NB SE PED	24	8	NA	NA	NA	NA
N	NB SW PED	19	4	NA	NA	NA	NA
O	EB SW PED	18	2	NA	NA	NA	NA
P	EB NW PED	21	2	NA	NA	NA	NA
Q	WB NW PED	22	6	NA	NA	NA	NA
R	WN SW PED	17	6	NA	NA	NA	NA

J PIN STATUS: 'ON' means standard detector setup. 'OFF' means J wire has been disconnected, but intact, at the harness panel with the necessary spade connection attached, marked, and insulated.

DETECTOR ASSIGNMENT: Detector inputs shall be assigned to the distinct detector inputs. Detector assignments 1-8 are 'Standard Detectors'. Detector assignments 9-16 are 'Special Detectors'. Detector assignments 17-24 are 'Pedestrian Detectors'.



CABLE PLAN LEGEND

- PROPOSED**
- [R] 12" TRAFFIC SIGNAL SECTION
 - [Y] LEFT TURN YELLOW
 - [G] LEFT TURN GREEN
 - [DW/W] WALK/DON'T WALK SECTION
 - [CAB] CONTROLLER CABINET
 - [V] VEHICLE DETECTOR, INDUCTION LOOP
 - [2] ELECTRIC CABLE IN CONDUIT
 - * DENOTES NUMBER OF CONDUCTORS
 - * P DENOTES NUMBER OF PAIRS IN TWISTED SHIELDED CABLE
 - * C DENOTES NUMBER OF PAIRS IN NO. 16 COMMUNICATION CABLE
 - [TS] TRAFFIC SIGNAL WITH BACKPLATE
 - [PB] PEDESTRIAN PUSHBUTTON DETECTOR
 - [L] * L = FIBEROPTIC NO LEFT TURN SIGN
 - [R] * R = FIBEROPTIC NO RIGHT TURN SIGN

ELECTRICAL LOAD FOR US 24 & EIGHTH STREET

US 24	NUMBER	WATTAGE EACH	BURN TIME (%)
RED	4	10.5	21
YELLOW	4	25	4
GREEN	4	18	75
YELLOW ARROW	4	7	2
GREEN ARROW	4	3.4	3
WALK	4	5	2
DON'T WALK	4	7	98
NO LEFT TURN	2	200	1.5

EIGHTH STREET	NUMBER	WATTAGE EACH	BURN TIME (%)
RED	4	135	81
YELLOW	4	135	2
GREEN	4	135	17
GREEN ARROW	2	11	1
WALK	4	5	2
DON'T WALK	4	7	98

TRAFFIC SIGNAL CABINET	NUMBER	WATTAGE EACH	BURN TIME (%)
MASTER CONTROLLER	1	6	100
CONTROLLER	1	6	100
DETECTORS	7	4	100

Agency Responsible for Energy Charges: City of Watseka, 231 East Oak Street, Watseka, Illinois 60970, 815-468-8224.

REVISIONS		ILLINOIS DEPARTMENT OF TRANSPORTATION
NAME	DATE	
		<p>TRAFFIC DETAILS EIGHTH ST.</p> <p>DRAWN BY _____ CHECKED BY _____</p> <p>DATE _____</p>

MODEL: 4400E1M.MIF; FILE: 4400E1M.MIF; WORKSPACE: 4400E1M.MIF; 07/25/2023 10:36:41 AM; 04-10-2023; 04-10-2023

USER NAME = budzynskim	DESIGNED -	REVISED -
	DRAWN -	REVISED -
PLOT SCALE = 100,0000' / in.	CHECKED -	REVISED -
PLOT DATE = 2/10/2022	DATE -	REVISED -

STATE OF ILLINOIS
DEPARTMENT OF TRANSPORTATION

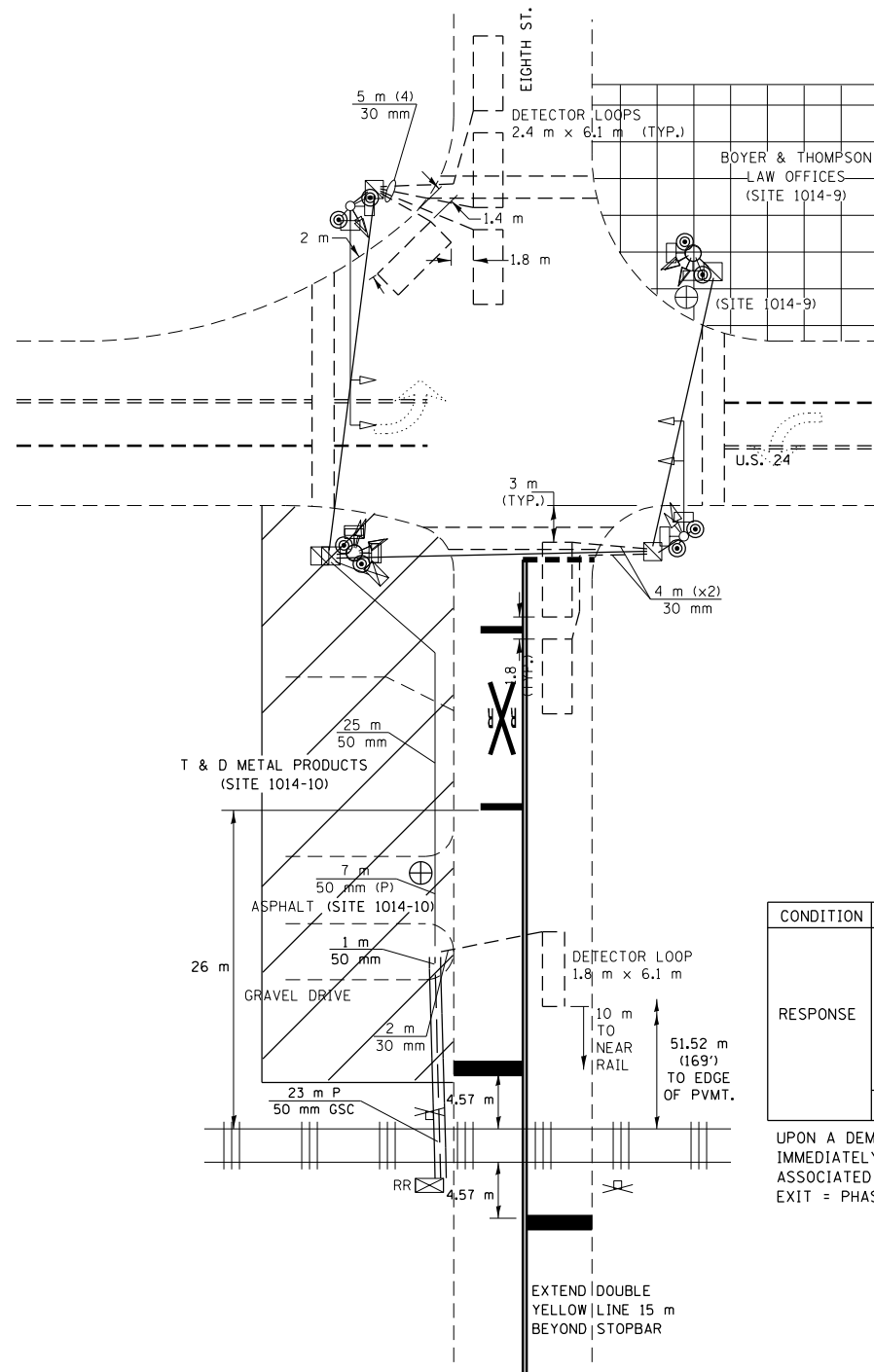
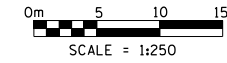
CABLE PLAN AND PHASE DIAGRAM
US 24 / IL 1 AND EIGHTH ST (WATSEKA)

SCALE: SHEET OF SHEETS STA. TO STA.

F.A.P. RTE.	SECTION	COUNTY	TOTAL SHEETS	SHEET NO.
VAR	(L, M) T5, RR & (116) T5, RR	IROQUOIS	18	14
CONTRACT NO. 66M10				
ILLINOIS FED. AID PROJECT				

FOR INFORMATION ONLY

F.A.P. RTE.	SECTION	COUNTY	TOTAL SHEETS	SHEET NO.
49	(MITS-1)	IROQUOIS		
STA.		TO STA.		
FED. ROAD DIST. NO.		ILLINOIS STATE AID PROJECT		



LEGEND

- ⊙ EXIST. PED. PUSHBUTTON DETECTOR
- ⊠ EXIST. HANDHOLE
- ⊞ EXIST. CONTROLLER
- EXIST. STEEL MAST ARM
- EXIST. SIGNAL POST
- ▲ EXIST. SIGNAL HEAD
- ⊠ EXIST. PEDESTRIAN SIGNAL HEAD
- EXIST. UNDERGROUND CABLE
- ⊕ EXIST. ELECTRIC SERVICE
- ⌈ EXIST. DETECTOR LOOP
- EXIST. LIGHT UNIT
- ⊞ RR RAILROAD CROSSBUCK
- ⊞ RR RAILROAD CONTROLLER
- ⊞ PROP. HANDHOLE
- ⊞ PROP. CONTROLLER
- PROP. SIGNAL POST
- ▲ PROP. SIGNAL HEAD
- ⊠ PROP. PEDESTRIAN SIGNAL HEAD
- ≡ PROP. CONDUIT
- PROP. SERVICE

RAILROAD PRE-EMPT SEQUENCE FOR TP&W TRACK

CONDITION	TRAIN DETECTED	CONTINUE	CONTINUE	CONTINUE	TRACK CLEARS
RESPONSE	LEAVE CURRENT DISPLAY WITH YELLOW AND ALL RED CLEARANCE				REMAIN IN NORMAL OPERATION
		TIME TRACK CLEARANCE	EXIT TRACK CLEARANCE SERVICE US24 EAST	HOLD	
		NO LEFT TURN SIGNS		LIGHT	

UPON A DEMAND FOR RAILROAD PREEMPTION, ANY ACTIVE WALK INDICATIONS SHALL IMMEDIATELY TERMINATE AND FLASHING DON'T WALK WILL BE LIMITED THROUGH THE ASSOCIATED VEHICULAR YELLOW CLEARANCE INTERVAL ONLY.
EXIT = PHASES 4+8

REVISIONS	
NAME	DATE

ILLINOIS DEPARTMENT OF TRANSPORTATION

U.S. 24 & EIGHTH ST.

STATE OF ILLINOIS
DEPARTMENT OF TRANSPORTATION

PLAN VIEW
US 24 / IL 1 AND EIGHTH ST (WATSEKA)

SCALE: SHEET OF SHEETS STA. TO STA.

F.A.P. RTE.	SECTION	COUNTY	TOTAL SHEETS	SHEET NO.
VAR	(L, M) T5, RR & (116) T5, RR	IROQUOIS	18	15
			CONTRACT NO. 66M10	
			ILLINOIS FED. AID PROJECT	

MODEL: \\MODELS\MARIS
FILE: \\MARIS_CAD\work\66m10\budzynskim\075023\0366M10-sh-covr.dgn

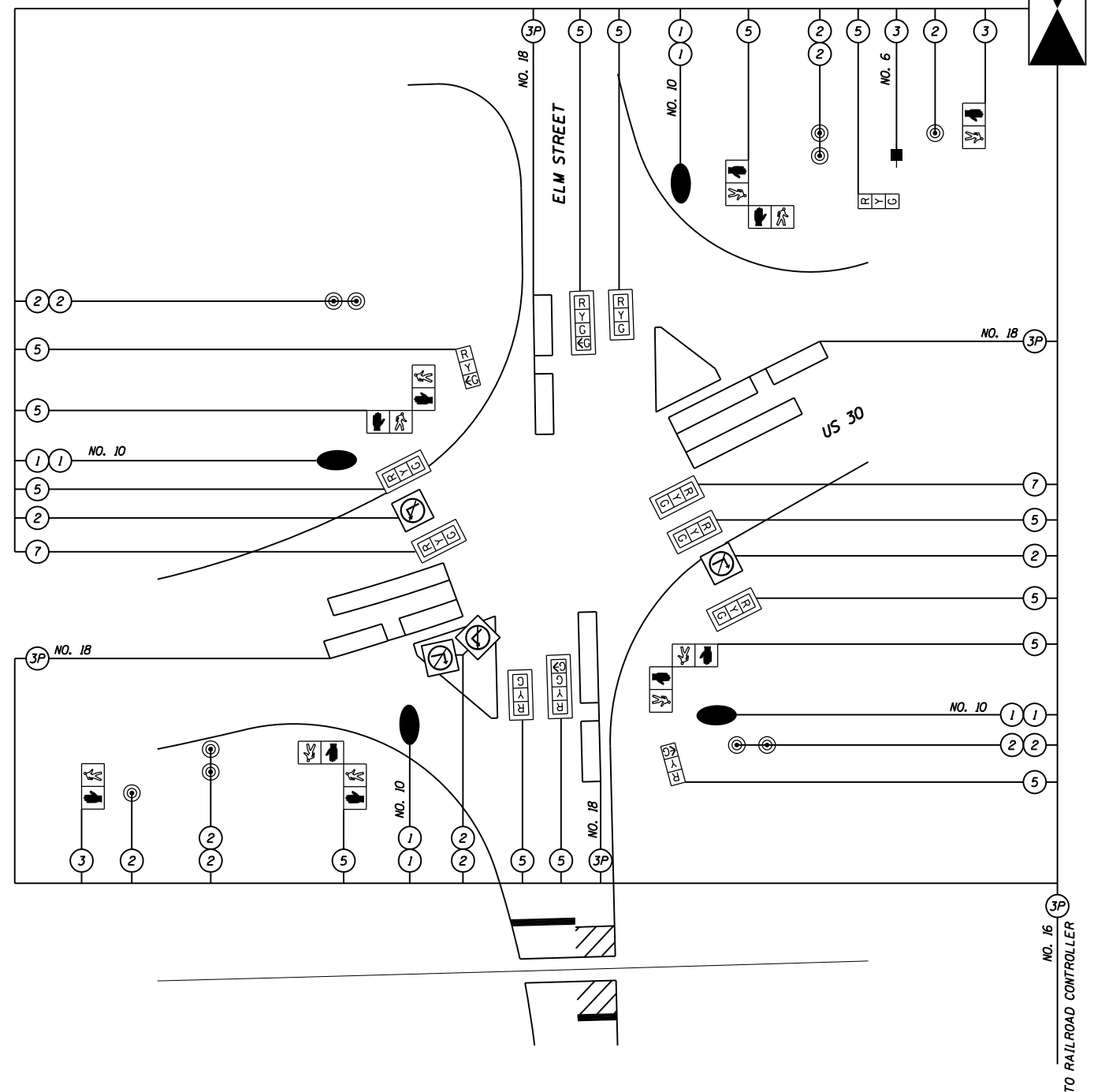
USER NAME = budzynskim	DESIGNED -	REVISED -
PLOT SCALE = 100.0000' / in.	DRAWN -	REVISED -
PLOT DATE = 2/10/2022	CHECKED -	REVISED -
	DATE -	REVISED -

FOR INFORMATION ONLY

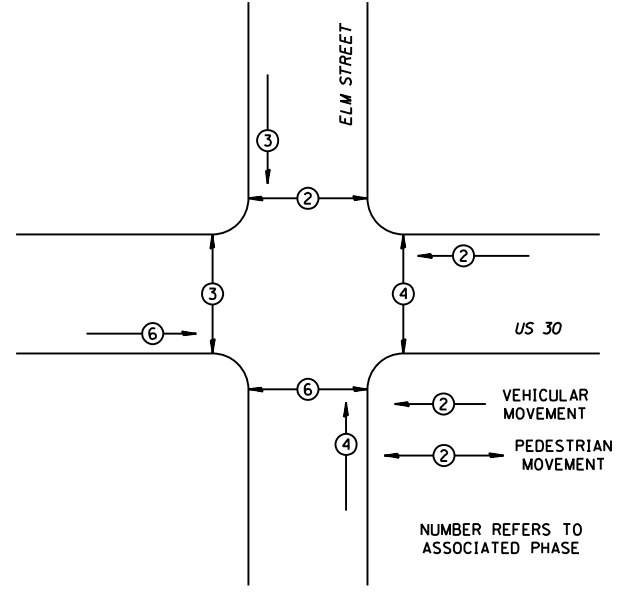
F.A.P. RTE.	SECTION	COUNTY	TOTAL SHEETS	SHEET NO.
573	116R-3	DEKALB	221	102
STA.		TO STA.		
FED. ROAD DIST. NO.		ILLINOIS FED. AID PROJECT		

SHEET 3 OF 5

CABLE PLAN



PHASE DESIGNATION DIAGRAM



UPON A DEMAND FOR RAILROAD PREEMPTION, ANY ACTIVE WALK INDICATIONS SHALL IMMEDIATELY TERMINATE AND FLASHING DON'T WALK WILL BE LIMITED THROUGH THE ASSOCIATED VEHICULAR YELLOW CLEARANCE INTERVAL ONLY.
 TRACK CLEARANCE = PHASE 4
 DWELL/HOLD = PHASES 2+6
 EXIT = PHASE 3

- LEGEND**
- ② INDICATES NUMBER OF NEW CONDUCTORS. ALL CABLE IS NO. 14 EXCEPT AS INDICATED. "P" INDICATES PAIR CABLE
 - NEW SIGNAL HEAD WITH OR WITHOUT BACKPLATE
 - NEW PEDESTRIAN HEAD
 - PEDESTRIAN PUSHBUTTON
 - LUMINAIRE, 250 WATT
 - ILLUMINATED NO LEFT TURN SIGN
 - ILLUMINATED NO RIGHT TURN SIGN

REVISIONS		ILLINOIS DEPARTMENT OF TRANSPORTATION	
NAME	DATE		
L.HILL	8/21/02		
L.HILL	9/6/02		

SCALE: VERT. _____
 HORIZ. _____
 DATE 8/20/02

DRAWN BY L.D.HILL
 CHECKED BY H.MUNDSON

MODEL: I:\MODELS\MAR15...
 FILE: MAR15...
 USER: budzynskim

USER NAME = budzynskim	DESIGNED -	REVISED -
PLOT SCALE = 100,0000' / in.	DRAWN -	REVISED -
PLOT DATE = 2/10/2022	CHECKED -	REVISED -
	DATE -	REVISED -

STATE OF ILLINOIS
 DEPARTMENT OF TRANSPORTATION

CABLE PLAN AND PHASE DIAGRAM
 US 30 AND ELM ST (WATERMAN)

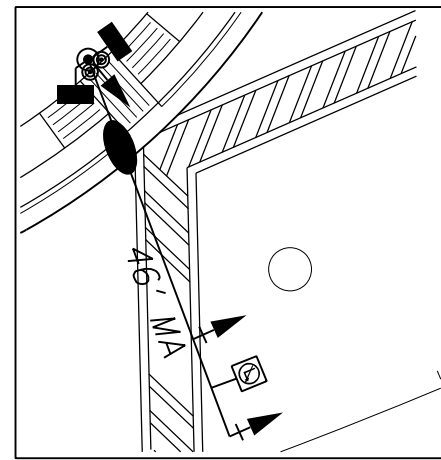
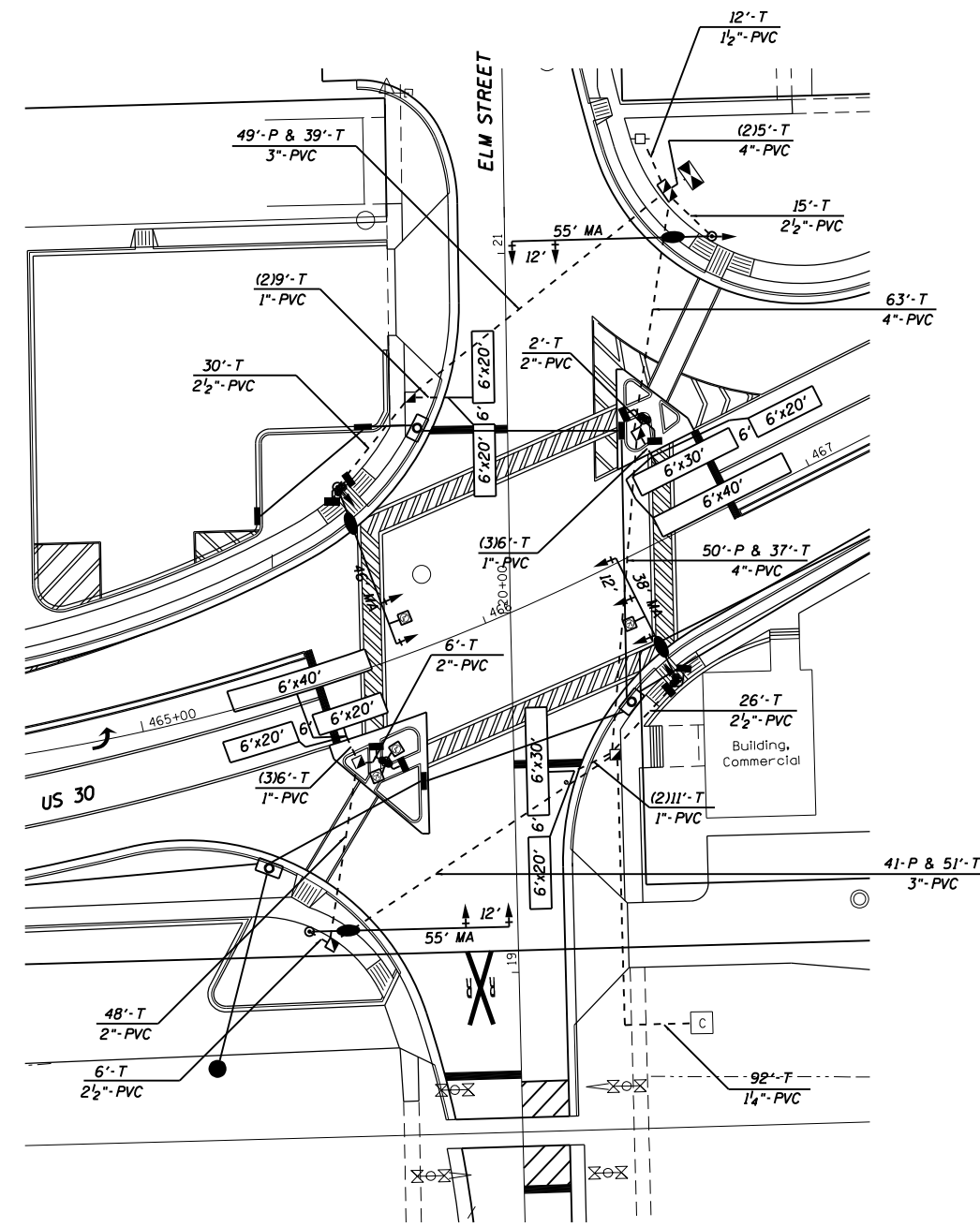
SCALE: SHEET OF SHEETS STA. TO STA.

F.A.P. RTE.	SECTION	COUNTY	TOTAL SHEETS	SHEET NO.
VAR	(L, M) T5, RR & (116) T5, RR	IROQUOIS	18	16
				CONTRACT NO. 66M10
		ILLINOIS FED. AID PROJECT		

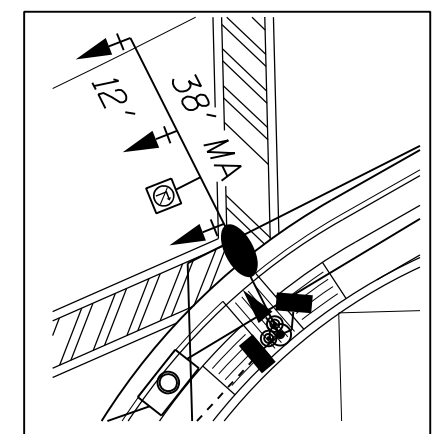
FOR INFORMATION ONLY

F.A.P. RTE.	SECTION	COUNTY	TOTAL SHEETS	SHEET NO.
573	116R-3	DEKALB	221	101
STA.		TO STA.		
FED. ROAD DIST. NO. ILLINOIS FED. AID PROJECT				

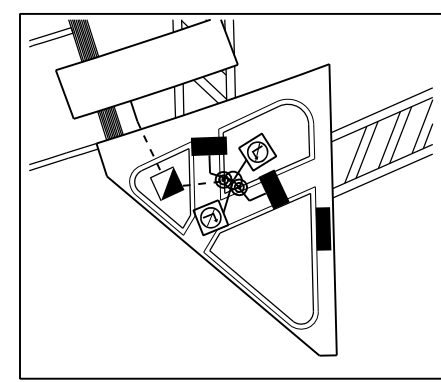
SHEET 2 OF 5



NW QUADRANT DETAIL



SE QUADRANT DETAIL



SW QUADRANT DETAIL



LEGEND

- EXISTING CONTROLLER
- NEW CONTROLLER
- EXISTING ALUMINUM MAST ARM ASSEMBLY AND POLE
- NEW ALUMINUM MAST ARM ASSEMBLY AND POLE
- EXISTING STEEL MAST ARM ASSEMBLY AND POLE
- NEW STEEL MAST ARM ASSEMBLY AND POLE
- EXISTING SIGNAL HEAD AND POST
- NEW SIGNAL HEAD AND POST
- EXISTING SIGNAL HEAD
- NEW SIGNAL HEAD WITH BACKPLATE
- EXISTING PEDESTRIAN HEAD
- NEW PEDESTRIAN HEAD
- PEDESTRIAN PUSHBUTTON
- EXISTING HANDHOLE
- NEW HANDHOLE
- NEW JUNCTION BOX
- NEW HEAVY-DUTY HANDHOLE
- NEW DOUBLE HANDHOLE
- EXISTING CONDUIT (LENGTH AND SIZE)
- NEW LUMINAIRE
- NEW GALVANIZED STEEL OR PVC CONDUIT
- UPPER NUMERAL INDICATES LENGTH
- "T" INDICATES CONDUIT IN TRENCH
- "P" INDICATES CONDUIT PUSHED
- LOWER NUMERAL INDICATES SIZE AND TYPE

FOUNDATION

MAST ARM LENGTH	FOUNDATION DEPTH
38'	12'
46'	15'
55'	(2)17'

REVISIONS	
NAME	DATE
L.HILL	8/26/02
L.HILL	8/27/02

ILLINOIS DEPARTMENT OF TRANSPORTATION
 SCALE: VERT. 1"=20'
 HORIZ. 1"=20'
 DATE 8/21/02
 DRAWN BY L.D.HILL
 CHECKED BY H.KNUDSON

MODEL: 4\MODEL\MAR15
 FILE: MAR15.dwg
 USER: budzynskim
 PLOT DATE: 2/10/2022

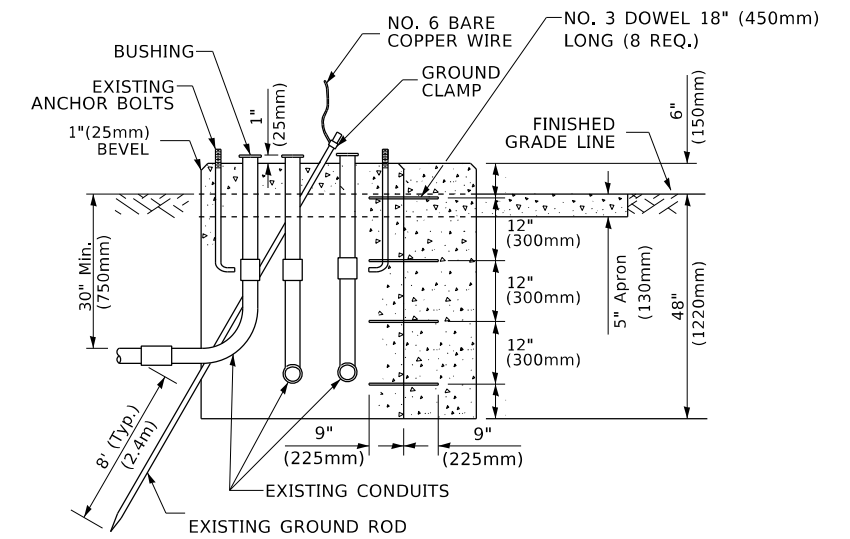
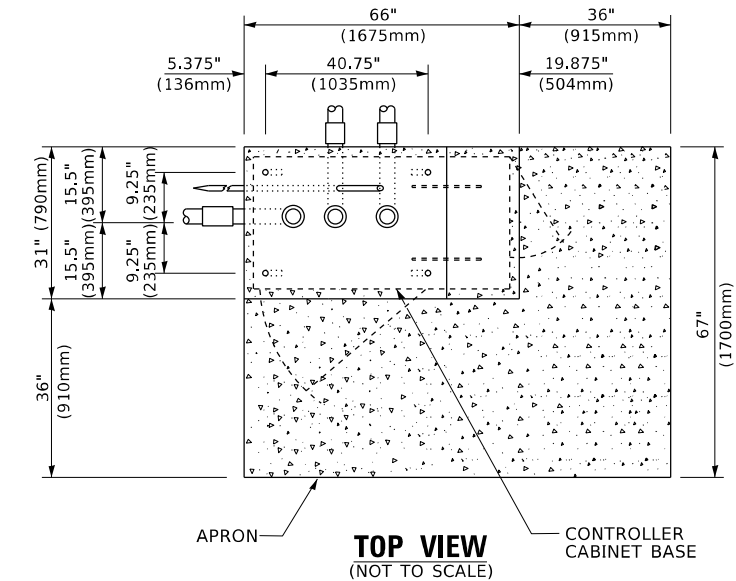
USER NAME = budzynskim	DESIGNED -	REVISED -
PLOT SCALE = 100.0000' / in.	DRAWN -	REVISED -
PLOT DATE = 2/10/2022	CHECKED -	REVISED -
	DATE -	REVISED -

STATE OF ILLINOIS
 DEPARTMENT OF TRANSPORTATION

PLAN VIEW
 US 30 AND ELM ST (WATERMAN)

SCALE: SHEET OF SHEETS STA. TO STA.

F.A.P. RTE.	SECTION	COUNTY	TOTAL SHEETS	SHEET NO.
VAR	(L, M) T5, RR & (116) T5, RR	IROQUOIS	18	17
CONTRACT NO. 66M10				
ILLINOIS FED. AID PROJECT				



MODEL: \\MODELM\AIFES
FILE: \\MODELM\AIFES\work\aid\6610\6610-dt-covr.dwg

USER NAME = budzynskim	DESIGNED -	REVISED -
PLOT SCALE = 100.0000' / in.	CHECKED -	REVISED -
PLOT DATE = 2/10/2022	DATE -	REVISED -

**STATE OF ILLINOIS
DEPARTMENT OF TRANSPORTATION**

DETAILS	
SCALE:	SHEET OF SHEETS STA. TO STA.

F.A.P. RTE.	SECTION	COUNTY	TOTAL SHEETS	SHEET NO.
VAR	(L, M) TS, RR & (116) TS, RR	IROQUOIS	18	18
CONTRACT NO. 66M10			ILLINOIS FED. AID PROJECT	