

STATE OF ILLINOIS  
DEPARTMENT OF TRANSPORTATION

F.A.P. RTE.	SECTION	COUNTY	TOTAL SHEETS	SHEET NO.
116	111 RS-7	COLES	18	1
		ILLINOIS	CONTRACT NO. 74A89	

# PROPOSED HIGHWAY PLANS

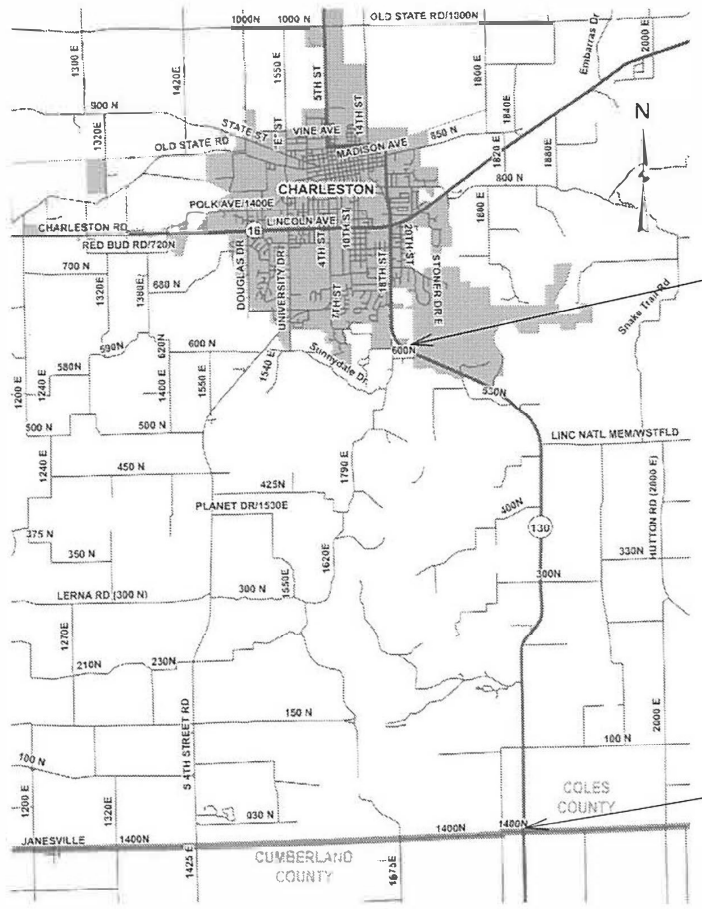
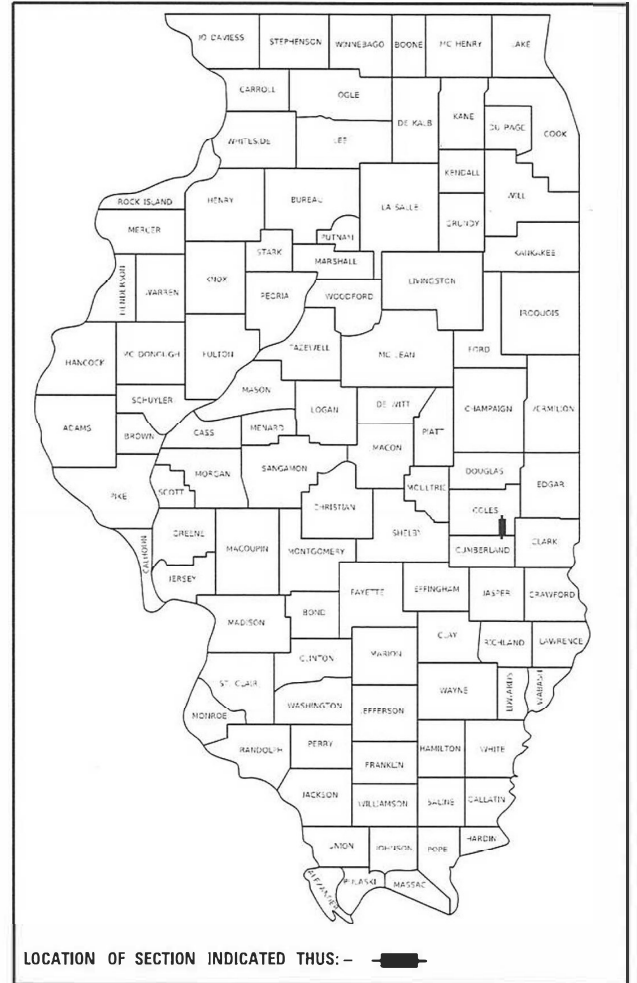
FAP ROUTE 116 (IL 130)  
SECTION 111 RS-7  
PROJECT STP-1QEX(043)  
SMART RESURFACING  
COLES COUNTY

C-97-016-22

FOR INDEX OF SHEETS, SEE SHEET NO. 2

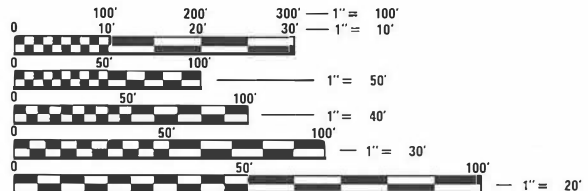
STATION EQUATION:  
STA 220+65.00 BK = STA 219+77.00

PAVING OMISSION:  
STA 179+00 TO STA 182+99



PROJECT BEGINS  
STA 150+53

PROJECT ENDS  
STA 504+40



FULL SIZE PLANS HAVE BEEN PREPARED USING STANDARD ENGINEERING SCALES. REDUCED SIZED PLANS WILL NOT CONFORM TO STANDARD SCALES. IN MAKING MEASUREMENTS ON REDUCED PLANS, THE ABOVE SCALES MAY BE USED.

J.U.L.I.E.  
JOINT UTILITY LOCATION INFORMATION FOR EXCAVATORS  
1-800-892-0123  
OR 811

PROJECT ENGINEER BRIAN LEWIS  
PROJECT MANAGER ANDREW NIEMERG

CONTRACT NO. 74A89

GROSS LENGTH = 35,475 FT. = 6.72 MILE  
NET LENGTH = 35,076 FT. = 6.64 MILE

STATE OF ILLINOIS  
DEPARTMENT OF TRANSPORTATION

SUBMITTED FEBRUARY 9 20 22  
Jeffrey P. Myerka  
REGIONAL ENGINEER

March 25 2022  
[Signature]  
ENGINEER OF DESIGN AND ENVIRONMENT

March 23 2022  
Stephen M. Lewis  
DIRECTOR OF HIGHWAYS PROJECT IMPLEMENTATION

PRINTED BY THE AUTHORITY  
OF THE STATE OF ILLINOIS

## GENERAL NOTES

THE WORK INCLUDED IN SECTION 111 RS-7 CONSISTS OF HMA SURFACE REMOVAL, PAVEMENT PATCHING, RESURFACING WITH HMA, THERMOPLASTIC AND PAINT PAVEMENT MARKINGS, AND ANY OTHER WORK NECESSARY TO COMPLETE THE SECTION.

THE PROPOSED PROJECT BEGINS APPROXIMATELY 1.8 MILES SOUTH OF IL 16 IN CHARLESTON AND EXTENDS SOUTHWARD A DISTANCE OF 6.72 MILES TO THE CUMBERLAND COUNTY LINE.

WHEN APPLYING SHORT TERM PAVEMENT MARKINGS, TEMPORARY TAPE SHALL BE USED ON THE SURFACE COURSE AND PAINT SHALL BE USED ON MILLED SURFACES.

MATERIAL FOR AGGREGATE SURFACE COURSE, TYPE B SHALL BE CRUSHED STONE OR CRUSHED CONCRETE.

MATERIAL FOR AGGREGATE WEDGE SHOULDER, TYPE B SHALL BE CRUSHED STONE OR CRUSHED CONCRETE. RAP WILL NOT BE ALLOWED.

ALL PAVEMENT MARKINGS BETWEEN STATION 226+98 AND STATION 258+77 SHALL BE THERMOPLASTIC.

4" THERMO - 6244' WHITE, 6436' YELLOW  
 6" THERMO - 247' WHITE  
 12" THERMO - 20' WHITE, 98' YELLOW  
 LTRS & SYM - ALL WHITE

THE URBAN PORTION OF THE PROJECT IS LOCATED NORTH OF STATION 203+18.

LONGITUDINAL JOINT SEALANT SHALL BE APPLIED TO THE CENTERLINE JOINT AND JOINTS BETWEEN PAVING PASSES IN THE VICINITY OF THE WESTFIELD ROAD INTERSECTION.

MATERIAL FOR AGGREGATE ENTRANCES IS INCLUDED IN THE QUANTITY FOR AGGREGATE WEDGE SHOULDERS.

NO WORK ON ENTRANCES OR AGGREGATE SHOULDERS IS PROPOSED WITHIN THE INLAY PORTIONS OF THE PROJECT.

RAISED REFLECTIVE PAVEMENT MARKERS SHALL BE PLACED AT 40' SPACING THROUGH THE TWO SHORT RADIUS CURVES WITHIN THE PROJECT LIMITS. THEY SHALL BE BI-DIRECTIONAL AMBER ON CENTERLINE AND ONE-WAY CRYSTAL ALONG THE INNER EDGE LINE.

RAISED REFLECTIVE PAVEMENT MARKERS CONSIST OF 49 ONE-WAY AMBER, 473 TWO-WAY AMBER, AND 63 ONE-WAY CRYSTAL.

PAINT PAVEMENT MARKING 4" CONSISTS OF 22,967' OF YELLOW AND 63,803' OF WHITE.

## INDEX OF SHEETS

SHEET NO.	ITEM
1	COVER SHEET
2	INDEX OF SHEETS AND GENERAL NOTES
3-4	SUMMARY OF QUANTITIES
5-8	TYPICAL SECTIONS
9	LOCATION MAP
10-11	SCHEDULES OF QUANTITIES
12-18	DETAILS

THE FOLLOWING STANDARDS ARE A PART OF THESE PLANS AND ARE INCLUDED AFTER SHEET NO. 18:

STD. NO.	DESCRIPTION
442201-03	CLASS C AND D PATCHES
667101-02	PERMANENT SURVEY MARKERS
701001-02	OFF-ROAD OPERATIONS, 2L, 2W, MORE THAT 15' AWAY
701006-05	OFF-RD OPERATIONS, 2L, 2W, 15' TO 24" FROM PAVEMENT EDGE
701201-05	LANE CLOSURE, 2L, 2W, DAY ONLY, FOR SPEEDS >= 45 MPH
701301-04	LANE CLOSURE, 2L, 2W, SHORT TIME OPERATIONS
701306-04	LANE CLOSURE, 2L, 2W, SLOW MOVING OPERATIONS DAY ONLY, FOR SPEEDS >= 45 MPH
701311-03	LANE CLOSURE 2L, 2W, MOVING OPERATIONS - DAY ONLY
701901-08	TRAFFIC CONTROL DEVICES
780001-05	TYPICAL PAVEMENT MARKINGS
781001-04	TYPICAL APPLICATIONS RAISED REFLECTIVE PAVEMENT MARKERS

### THE FOLLOWING MIXTURE REQUIREMENTS ARE APPLICABLE TO THIS PROJECT:

LOCATION(S)	MIXTURE USE(S)	PG	DESIGN AIR VOIDS	MIXTURE COMPOSITION	FRICTION AGGREGATE	MIXTURE WEIGHT	QUALITY MANAGEMENT PROGRAM	SUBLOT SIZE	MATERIAL TRANSFER DEVICE (REQUIRED?)
MAINLINE	POLYMERIZED HMA SURFACE COURSE, IL-9.5, MIX "D", N90 (1 1/2")	SBS PG 70-22	4.0% @ N=90	IL - 9.5	MIXTURE D	N90	PFP	1000	N/A
MAINLINE	HOT-MIX ASPHALT PATCHING, CLASS D	PG 64-22	4.0% @ N=70	IL - 19.0	N/A	N70	QC/QA	N/A	N/A
INCIDENTAL	HOT-MIX ASPHALT SURFACE COURSE, IL-9.5, MIX "C", N70	PG 64-22	4.0% @ N=70	IL - 9.5	MIXTURE C	N70	QC/QA	N/A	N/A

REV. - MS

PROJECT: D:\cadd\111 RS-7\111 RS-7.dwg  
 FILE NAME: 111 RS-7.dwg  
 PLOT SCALE: 1/8" = 1'-0"  
 PLOT DATE: 1/22/2022

USER NAME = Default	DESIGNED -	REVISD -	<b>STATE OF ILLINOIS DEPARTMENT OF TRANSPORTATION</b>	<b>INDEX OF SHEETS AND GENERAL NOTES</b>				F A P RTE	SECTION	COUNTY	TOTAL SHEETS	SHEET NO.			
PLOT SCALE = 1/8" = 1'-0"	DRAWN -	REVISD -		SCALE:	SHEET	OF	SHEETS	STA.	TO	STA.	116	111 RS-7	COLES	18	2
PLOT DATE = 1/22/2022	CHECKED -	REVISD -		CONTRACT NO 74A89											
	DATE -	REVISD -		ILLINOIS FED AID PROJECT											

80% FED  
20% STATE

80% FED  
20% STATE

SUMMARY OF QUANTITIES			TOTAL QUANTITIES	CONSTRUCTION TYPE CODE		
CODE NO	ITEM	UNIT		0005 URBAN	0005 RURAL	
40600290	BITUMINOUS MATERIALS (TACK COAT)	POUND	50569	9011	41558	
40600370	LONGITUDINAL JOINT SEALANT	FOOT	36261	4866	31395	
40600982	HOT-MIX ASPHALT SURFACE REMOVAL - BUTT JOINT	SQ YD	58		58	
40600990	TEMPORARY RAMP	SQ YD	125	66	59	
40604164	POLYMERIZED HOT-MIX ASPHALT SURFACE COURSE, 1L-9.5, MIX "D", N90	TON	9440	1682	7758	
40800050	INCIDENTAL HOT-MIX ASPHALT SURFACING	TON	139		139	
44000151	HOT-MIX ASPHALT SURFACE REMOVAL, 1/2"	SQ YD	75679		75679	
44000155	HOT-MIX ASPHALT SURFACE REMOVAL, 1 1/2"	SQ YD	36639	20024	16615	
44201803	CLASS D PATCHES, TYPE II, 13 INCH	SQ YD	832.7	17.4	815.3	
44201807	CLASS D PATCHES, TYPE III, 13 INCH	SQ YD	150.2		150.2	
44201809	CLASS D PATCHES, TYPE IV, 13 INCH	SQ YD	234.7	42.7	192	
48102100	AGGREGATE WEDGE SHOULDER, TYPE B	TON	2329		2329	
67000400	ENGINEER'S FIELD OFFICE, TYPE A	CAL MO	3	1	2	

SUMMARY OF QUANTITIES			TOTAL QUANTITIES	CONSTRUCTION TYPE CODE		
CODE NO	ITEM	UNIT		0005 URBAN	0005 RURAL	
67000600	ENGINEER'S FIELD LABORATORY	CAL MO	3	1	2	
67100100	MOBILIZATION	L SUM	1		1	
70100450	TRAFFIC CONTROL AND PROTECTION, STANDARD 701201	L SUM	1		1	
70100460	TRAFFIC CONTROL AND PROTECTION, STANDARD 701306	L SUM	1		1	
70107025	CHANGEABLE MESSAGE SIGN	CAL DA	28	14	14	
70300100	SHORT TERM PAVEMENT MARKING	FOOT	7136	976	6160	
70300150	SHORT TERM PAVEMENT MARKING REMOVAL	SQ FT	1190	163	1027	
* 78000100	THERMOPLASTIC PAVEMENT MARKING - LETTERS AND SYMBOLS	SQ FT	62.4		62.4	
* 78000200	THERMOPLASTIC PAVEMENT MARKING - LINE 4"	FOOT	12680		12680	
* 78000400	THERMOPLASTIC PAVEMENT MARKING - LINE 6"	FOOT	247		247	
* 78000600	THERMOPLASTIC PAVEMENT MARKING - LINE 12"	FOOT	118		118	
* 78001110	PAINT PAVEMENT MARKING - LINE 4"	FOOT	86770	13150	73620	

\* SPECIALTY ITEM

MODEL: Default  
 FILE NAME: p:\project-aw-bee\paw.com\PIV\DOT\Documents\DOT Office\Director 7\Project\74A89\CADD\DATA\CAD\Sheet\DOT74A89-4-15-2022.dgn

USER NAME = stefenmk	DESIGNED -	REVISED -
	DRAWN -	REVISED -
PLOT SCALE = 100,0000' / in.	CHECKED -	REVISED -
PLOT DATE = 2/15/2022	DATE -	REVISED -

STATE OF ILLINOIS  
DEPARTMENT OF TRANSPORTATION

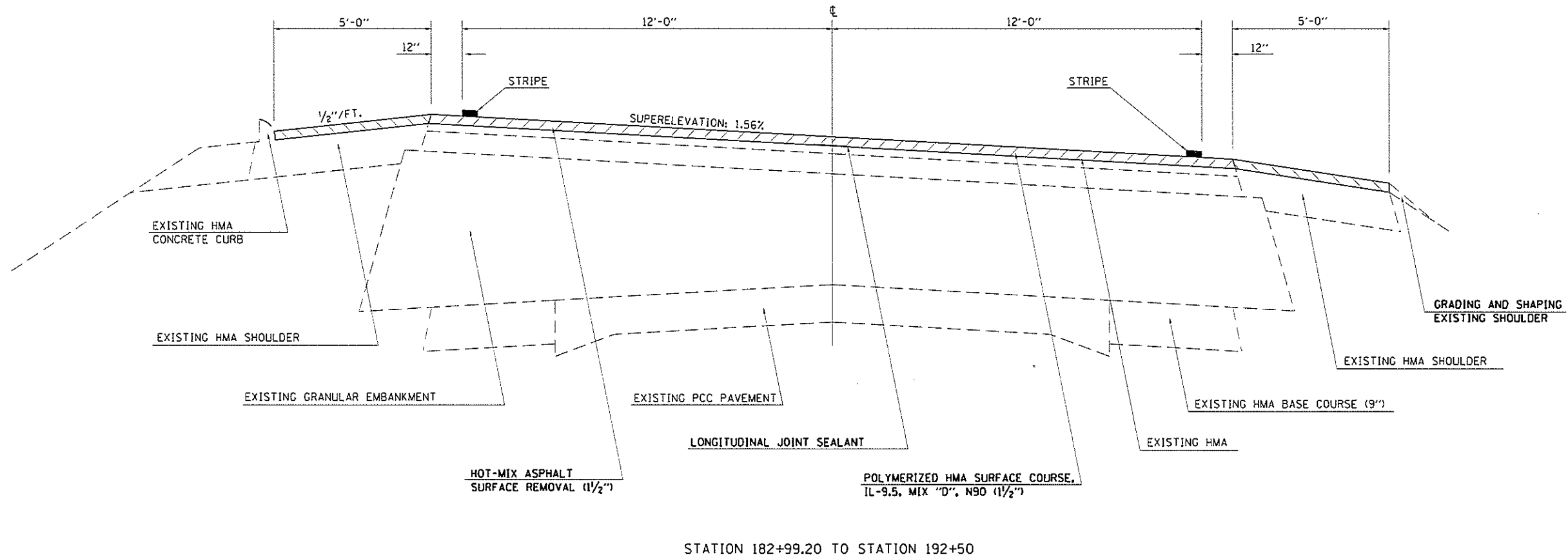
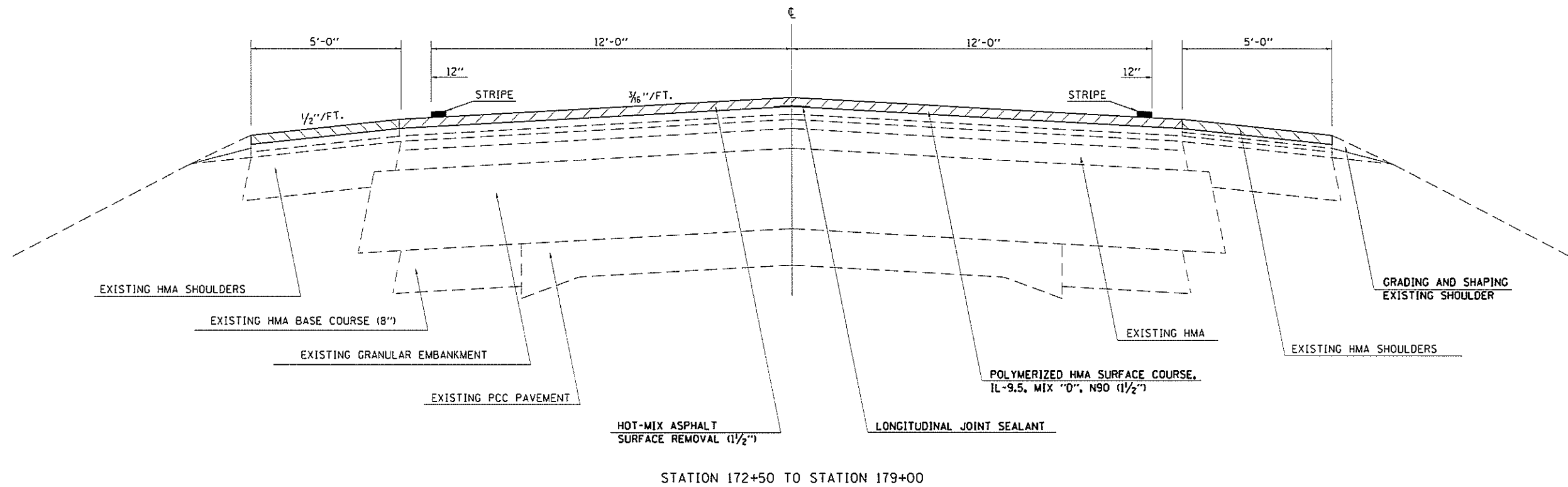
SUMMARY OF QUANTITIES

SCALE: SHEET OF SHEETS STA. TO STA.

F.A.P. RTE.	SECTION	COUNTY	TOTAL SHEETS	SHEET NO.
116	111 RS-7	COLES	18	3
CONTRACT NO. 74A89				
ILLINOIS FED. AID PROJECT				







MODEL: D:\chart...  
 FILE NAME: ...  
 PLOT DATE: 2/22/2022

USER NAME = Default	DESIGNED -	REVISED -
PLOT SCALE = 3.9427 / mm	DRAWN -	REVISED -
PLOT DATE = 2/22/2022	CHECKED -	REVISED -
	DATE -	REVISED -

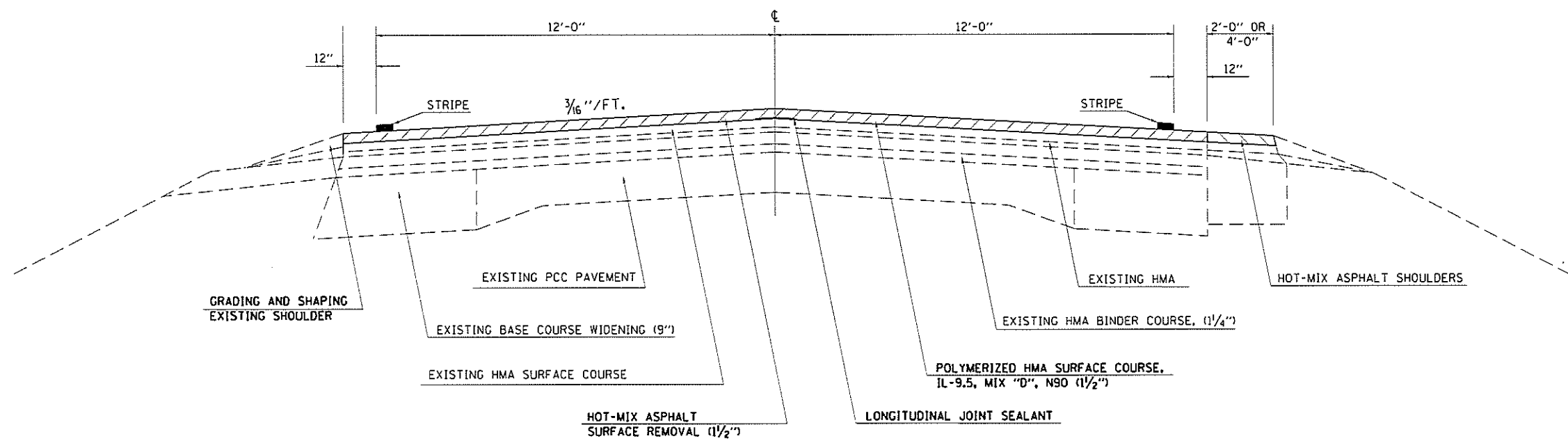
**STATE OF ILLINOIS  
DEPARTMENT OF TRANSPORTATION**

**TYPICAL SECTIONS**

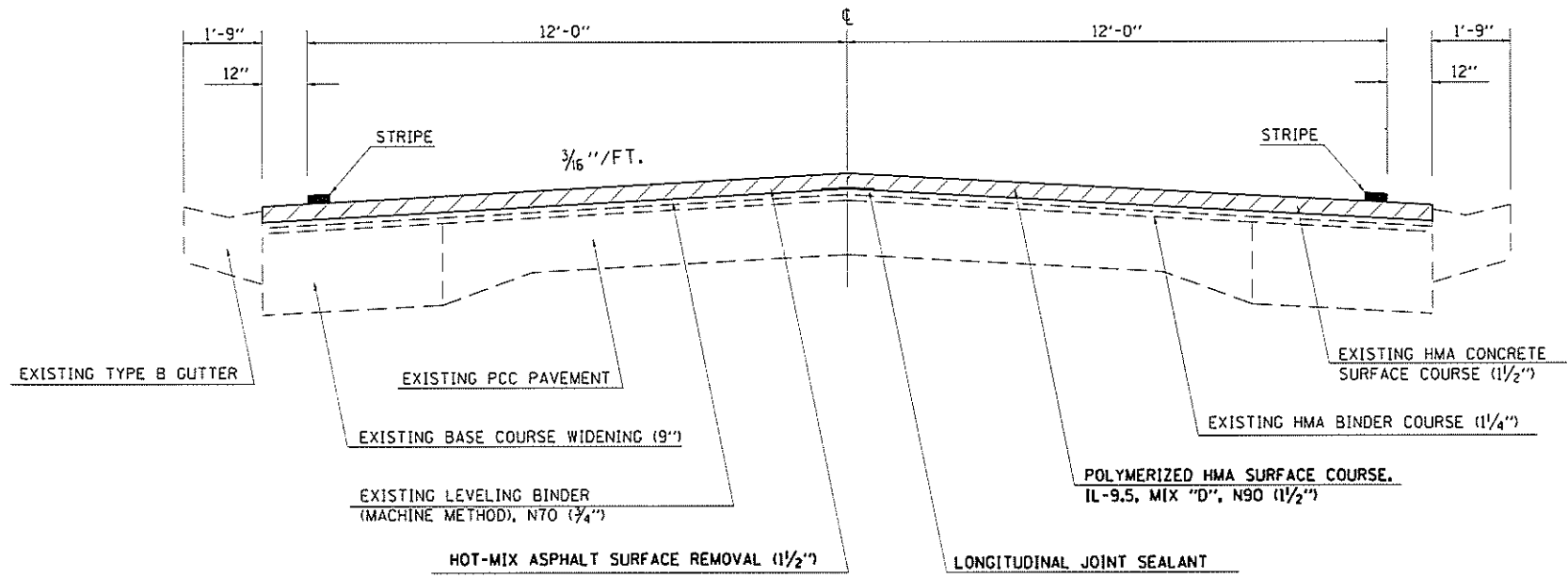
SCALE: SHEET OF SHEETS STA TO STA.

F.A.P. RTE.	SECTION	COUNTY	TOTAL SHEETS	SHEET NO.
116	111 RS-7	COLES	18	6
CONTRACT NO. 74A89				
ILLINOIS FED. AID PROJECT				





STATION 357+22 TO STATION 368+67  
 STATION 379+00 TO STATION 388+52  
 STATION 439+30 TO STATION 442+56



STATION 408+50 TO STATION 412+60  
 STATION 441+50 TO STATION 453+88  
 STATION 468+50 TO STATION 472+30

MODEL: D:\cort...  
 FILE NAME: ...  
 PROJECT: ...  
 OFFICE: ...  
 DATE: ...

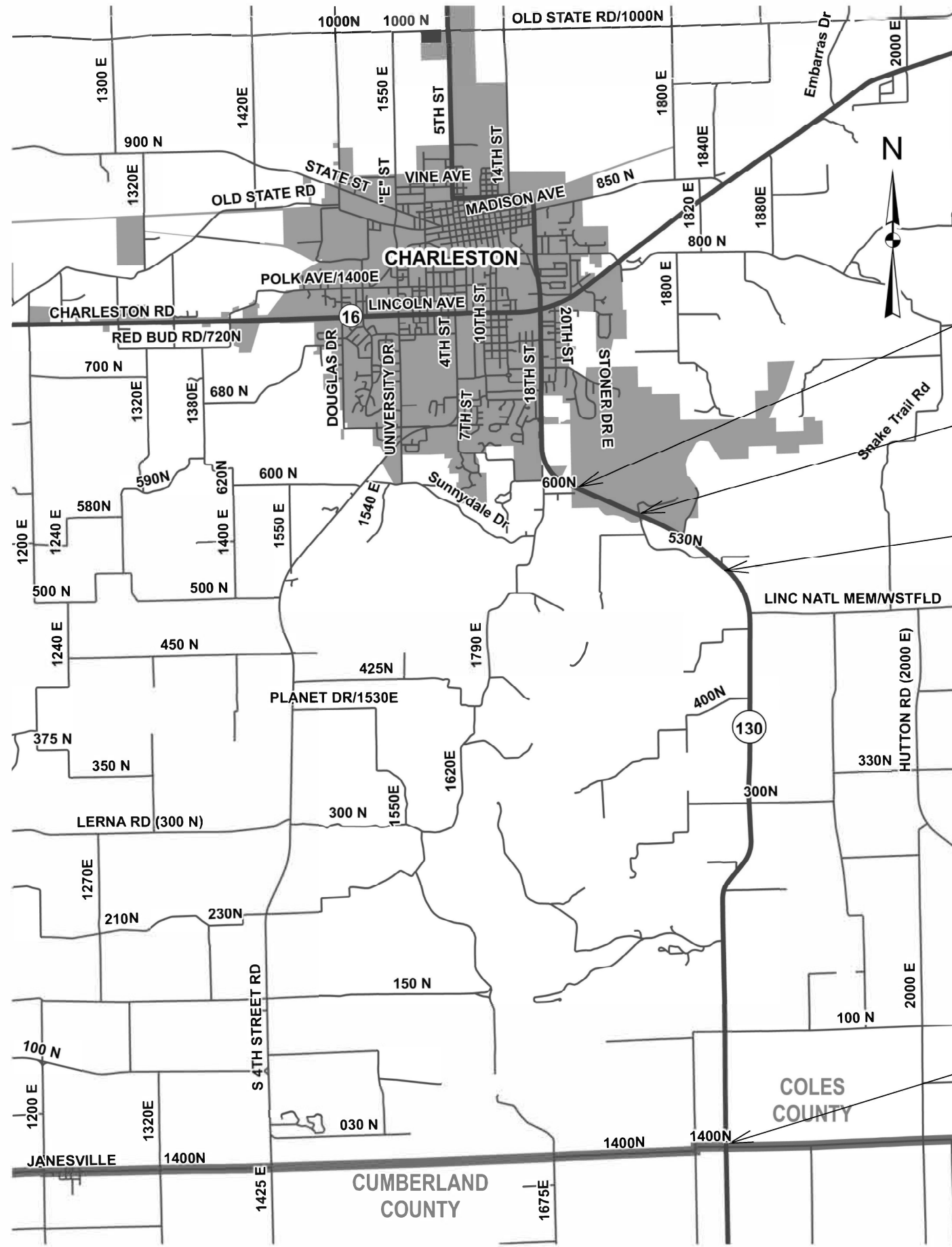
USER NAME = Default	DESIGNED -	REVISED -
PLOT SCALE = 3.9427 / mm	DRAWN -	REVISED -
PLOT DATE = 2-22-2022	CHECKED -	REVISED -
	DATE -	REVISED -

**STATE OF ILLINOIS**  
**DEPARTMENT OF TRANSPORTATION**

<b>TYPICAL SECTIONS</b>				
SCALE:	SHEET	OF	SHEETS	STA TO STA

F.A.P. RTE.	SECTION	COUNTY	TOTAL SHEETS	SHEET NO.
116	111 RS-7	COLES	18	8
CONTRACT NO. 74A89				
ILLINOIS FED AID PROJECT				





**PROJECT BEGINS  
STA 150+53**

**OMISSION:  
STA 179+00 TO 182+99**

**STATION EQUATION:  
STA 220+65 BK =  
STA 219+77 AH**

**PROJECT ENDS  
STA 504+40**

MODEL: D:\draft  
 FILE: MAP16E\_Plan116locw.bentley.com\_PWD\DOT\Documents\13DOT\_Offices\Distrcr\_7\Project\174A89\CADD\31\CO\Sheet\13074A89-16E.dgn

USER NAME = steffenmk	DESIGNED -	REVISED -
	DRAWN -	REVISED -
PLOT SCALE = 100.0000' / in.	CHECKED -	REVISED -
PLOT DATE = 2/9/2022	DATE -	REVISED -

**STATE OF ILLINOIS  
DEPARTMENT OF TRANSPORTATION**

**LOCATION MAP**

SCALE: SHEET OF SHEETS STA. TO STA.

F.A.P. RTE.	SECTION	COUNTY	TOTAL SHEETS	SHEET NO.
116	111 RS-7	COLES	18	9
CONTRACT NO. 74A89				
ILLINOIS FED. AID PROJECT				

REV. - MS

**RESURFACING SCHEDULE**

STATION	TO	STATION	LENGTH	AVERAGE PAVEMENT WIDTH	AREA	HOT-MIX ASPHALT SURFACE REMOVAL, 1/2"	HOT-MIX ASPHALT SURFACE REMOVAL, 1 1/2"	BITUMINOUS MATERIALS (TACK COAT)	POLYMERIZED HOT-MIX ASPHALT SURFACE COURSE, MIX "D", N90	AGGREGATE SHOULDERS, TYPE B	HOT-MIX ASPHALT SURFACE REMOVAL - BUTT JOINT	TEMPORARY RAMP
			FOOT	FOOT	SQ YD	SQ YD	SQ YD	POUND	TON	TON	SQ YD	SQ YD
150+53.00	TO	151+35.00	82.0	26.0	419		419	189	35			26
151+35.00	TO	154+00.00	265.0	26.0	1354		1354	610	114			
154+00.00	TO	157+15.00	315.0	26.0	1435		1435	646	121			
157+15.00	TO	157+50.00	35.0	26.0	140		140	63	12			
157+50.00	TO	172+50.00	1500.0	26.0	6000		6000	2700	504			
172+50.00	TO	172+85.00	35.0	26.0	140		140	63	12			
172+85.00	TO	178+65.00	580.0	26.0	2320		2320	1044	195			
178+65.00	TO	179+00.00	35.0	26.0	140		140	63	12			20
179+00.00	TO	182+99.20	399.2									
182+99.20	TO	203+18.00	2018.8	26.0	8075		8075	3634	678			20
203+18.00	TO	220+65.00	1747.0	26.0	6988		6988	3145	587			
220+65.00	BK=	219+77.00 AH										
219+87.00	TO	220+12.00	25.0	26.0	72		72	33	6	2		
220+12.00	TO	239+82.00	1970.0	26.0	5691	5691		2561	478	175		
239+82.00	TO	244+25.00	443.0	36.0	1772	1772		797	149	39		
244+25.00	TO	250+45.00	620.0	42.0	2893	2893		1302	243	55		45
250+45.00	TO	253+84.00	339.0	36.0	1356	1356		610	114	30		
253+84.00	TO	357+22.00	10338.0	26.0	29865	29865		13439	2509	916		
357+22.00	TO	368+67.00	1145.0	26.0	3562	3562		1603	299	101		
368+67.00	TO	379+00.00	1033.0	26.0	2984	2984		1343	251	92		
379+00.00	TO	388+52.00	952.0	26.0	2962	2962		1333	249	84		
388+52.00	TO	406+95.00	1843.0	26.0	5324	5324		2396	447	163		
406+95.00	TO	407+20.00	25.0	26.0	72		72	33	6	2		
407+20.00	TO	412+60.00	540.0	26.0	1560		1560	702	131			
412+60.00	TO	412+85.00	25.0	26.0	72		72	33	6	2		
412+85.00	TO	433+82.00	2097.0	26.0	6058	6058		2726	509	186		
433+82.00	TO	434+07.00	25.0	26.0	94		94	43	8	2		
434+07.00	TO	441+50.00	743.0	26.0	2807		2807	1263	236	66		
441+50.00	TO	442+56.00	106.0	26.0	353		353	159	30			
442+56.00	TO	445+70.00	314.0	26.0	907		907	408	76			
445+70.00	TO	453+67.00	797.0	26.0	2302		2302	1036	193			
453+67.00	TO	453+92.00	25.0	26.0	72		72	33	6	2		
453+92.00	TO	468+20.00	1428.0	26.0	4125	4125		1856	347	127		
468+20.00	TO	468+45.00	25.0	26.0	72		72	33	6	2		
468+45.00	TO	472+50.00	405.0	26.0	1170		1170	527	98			
472+50.00	TO	472+75.00	25.0	26.0	72		72	33	6	2		
472+75.00	TO	504+40.00	3165.0	26.0	9143	9085		4115	768	280	58	14
TOTALS			35465		112376	75679	36639	50569	9440	2329	58	125

MODEL: Default  
 FILE: \\mfe-pw-beadley.com\FW\DOT\Documents\DOT\_Offices\Dir\rdt\_7\Project\74A89\CAD\Sheet\DOT74A89-Reschedule.dwg

USER NAME = stefenmk	DESIGNED -	REVISED -
	DRAWN -	REVISED -
PLOT SCALE = 2,0000' / in.	CHECKED -	REVISED -
PLOT DATE = 2/9/2022	DATE -	REVISED -

**STATE OF ILLINOIS  
DEPARTMENT OF TRANSPORTATION**

**RESURFACING SCHEDULE**

SCALE: SHEET OF SHEETS STA. TO STA.

F.A.P. RTE.	SECTION	COUNTY	TOTAL SHEETS	SHEET NO.
116	111 RS-7	COLES	18	10
CONTRACT NO. 74A89				
ILLINOIS FED. AID PROJECT				

ENTRANCE SCHEDULE

STATIONING			AGGREGATE SURFACE COURSE, TYPE B	INCIDENTAL HMA SURFACING	SURFACE REMOVAL, VARIABLE DEPTH (SPECIAL)
SIDE	STATION	TYPE	TON	TON	SQ YD
LT	221+09	PRA		5.0	59
RT	221+32	PE		2.1	25
RT	224+43	PE		2.6	31
LT	224+43	MBT	*		
RT	227+55	PE	*		
LT	227+73	FE	*		
RT	233+40	PE		2.3	27
LT	234+76	MBT	*		
RT	234+88	PE		4.3	52
RT	236+30	PE		4.1	48
LT	236+30	MBT	*		
RT	241+28	PE		2.3	27
LT	241+45	MBT		3.3	
RT	244+71	PE		2.6	31
LT	244+71	MBT		3.3	
LT	246+78	PE		2.3	27
RT	247+98	FE	*		
LT	247+98	PRA		11.9	142
RT	255+16	PRA		3.5	42
LT	260+75	PE		2.5	29
LT	265+66	PE		2.6	31
LT	266+60	PE		2.4	29
RT	267+15	PE		2.1	24
LT	267+61	PE		2.1	25
LT	271+89	MBT		3.3	
RT	271+89	PE		2.5	29
RT	274+26	PE		2.8	34
RT	280+95	FE	*		
LT	281+42	PE		2.2	27
LT	283+44	FE	*		
RT	288+47	PRA		3.4	40
LT	293+66	FE	*		
LT	305+85	FE	*		
RT	311+43	FE	*		
LT	311+43	FE	*		
LT	317+21	MBT	*		
RT	317+52	PE		1.9	23
LT	318+00	FE	*		
LT	319+05	MBT	*		

ENTRANCE SCHEDULE

STATIONING			AGGREGATE SURFACE COURSE, TYPE B	INCIDENTAL HMA SURFACING	SURFACE REMOVAL, VARIABLE DEPTH (SPECIAL)
SIDE	STATION	TYPE	TON	TON	SQ YD
LT	319+76	CE		5.4	64
LT	324+68	FE	*		
LT	330+98	FE	*		
RT	330+98	FE	*		
RT	333+77	FE	*		
LT	333+77	PE		2.9	35
RT	338+14	PRA		3.8	46
LT	338+14	PRA		3.8	45
RT	352+23	PE		2.5	29
LT	352+23	MBT	*		
RT	358+80	FE	*		
LT	365+81	PE		2.6	31
RT	368+94	PE		2.3	27
RT	372+27	PRA		4.2	50
LT	383+29	PRA		3.3	39
RT	384+33	FE	*		
RT	386+29	PE		2.3	28
LT	386+29	MBT	*		
LT	387+36	PE		2.8	33
RT	395+23	PE		4.1	49
LT	395+43	MBT	*		
RT	397+95	FE	*		
LT	397+95	FE	*		
LT	406+86	FE	*		
RT	407+20	CE		11.2	133
LT	416+98	PE		2.1	25
LT	420+96	PE		3.5	42
RT	427+91	FE	*		
RT	432+49	PE		2.1	26
LT	432+49	MBT	*		
RT	458+35	FE	*		
LT	476+93	FE		2.3	27
RT	478+17	FE	*		
RT	487+02	FE	*		
LT	491+38	FE	*		
TOTAL			0	139	1531
* INCLUDED IN AGG WEDGE SHOULDER					

PROTECTING OR RESETTING SURVEY MARKERS

POINT	NORTHING	EASTING	STATION	OFFSET	DESC	TREATMENT
10002	1002879.01	1041705.056	339+17.81	20.35' LT.	1/2" IP FOUND MR BK1 PG 401 SEC7 T11N R10E	NONE
10003	997454.978	1040348.974	397+64	3.5' LT.	TOP CENTER OF ALUM. VAULT FOUND BUT NOT CENTERED OVER OLD VAULT. OLD MR SAID IT'S A BRASS DISK.	INSTALL NEW VAULT, RE-CENTER OVER OLD EXISTING CAST IRON VAULT
10004	992142.216	1040310.04	450+80	33.0' RT.	I.P. FOUND IN ALUM. VAULT M.R. BK1 PG. 329 SEC19 T11N R10E	SURVEY VAULT
10005	986740.175	1040286.244	504+86	0.0'	BRASS DISK IN ALUM. VAULT BURIED 1.5' M.R. 56 CUMBERLAND COUNTY	NONE

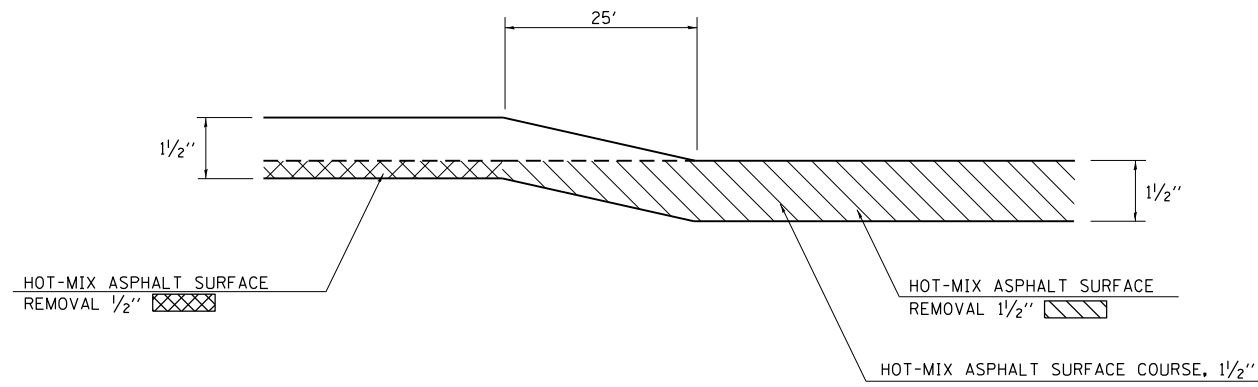
MODEL: Default  
FILE: Mainfile\_paw\uldest-paw-bee\paw.com\PIV\DOT\Documents\DOT\_Offices\Director\_7\Project\74A89\CADD\DATA\CAD\Sheet\DOT74A89-EntranceSchedule.dwg

USER NAME = stefnkmk	DESIGNED -	REVISED -
	DRAWN -	REVISED -
PLOT SCALE = 2,0000' / in.	CHECKED -	REVISED -
PLOT DATE = 2/9/2022	DATE -	REVISED -

STATE OF ILLINOIS  
DEPARTMENT OF TRANSPORTATION

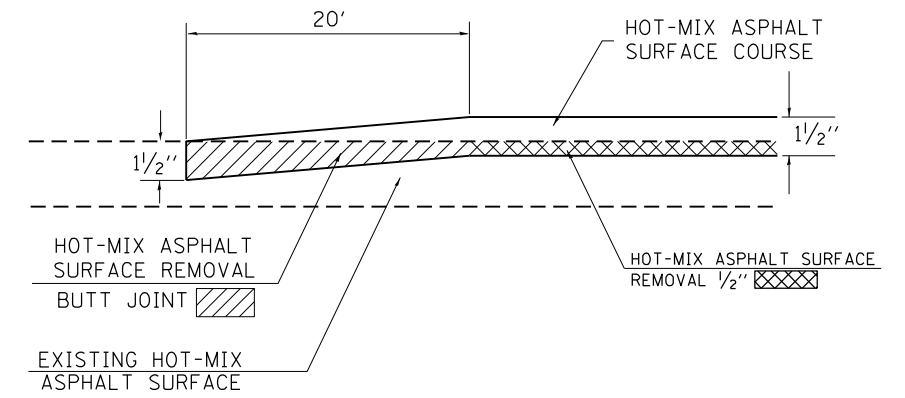
SCALE:		SHEET	OF	SHEETS	STA.	TO	STA.
--------	--	-------	----	--------	------	----	------

F.A.P. RTE.	SECTION	COUNTY	TOTAL SHEETS	SHEET NO.
116	111 RS-7	COLES	18	11
CONTRACT NO. 74A89				
ILLINOIS FED. AID PROJECT				



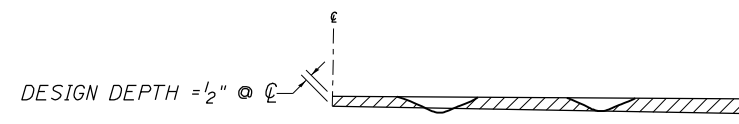
**MILLING TRANSITION DETAIL**

- STATION 219+87 TO STATION 220+12
- STATION 406+95 TO STATION 407+20
- STATION 412+60 TO STATION 412+85
- STATION 433+82 TO STATION 434+07
- STATION 453+67 TO STATION 453+92
- STATION 468+20 TO STATION 468+45
- STATION 472+50 TO STATION 472+75



**BUTT JOINT DETAIL**

STATION 504+20 TO STATION 504+40



**NOTES:**

1. MILLING SHALL BE DONE TO ATTAIN A  $\frac{3}{16}$ "/' SLOPE IN CROWN SECTIONS
2. EXISTING S.E. AND S.E. TRANSITIONS SHALL BE MAINTAINED UNLESS OTHERWISE SHOWN ON THE PLANS.
3. MILLING TO THE BOTTOM OF WHEEL RUTS SHALL NOT BE NECESSARY UNLESS REQUIRED TO OBTAIN SLOPE OR THE DESIGN DEPTH AT CENTERLINE.
4. THE AVERAGE DEPTH OF MILLING IS ESTIMATED TO BE  $\frac{1}{2}$ " BUT MAY VARY IN ISOLATED LOCATIONS.

HOT-MIX ASPHALT SURFACE REMOVAL

MODEL: Default  
 FILE NAME: p:\ultra-cw-bee\p\dot\Documents\DOT Office\Director\_7\Project\74A89\CADD\DATA\CAD\Sheet\DOT74A89-4-1-2.dwg

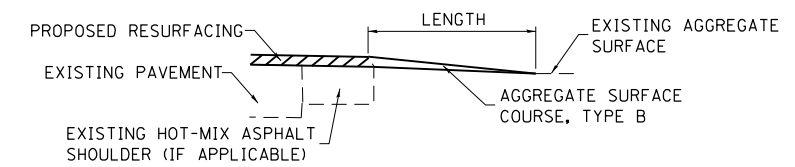
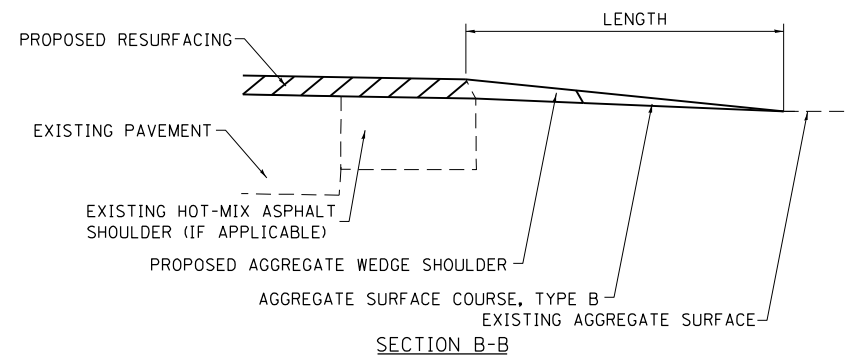
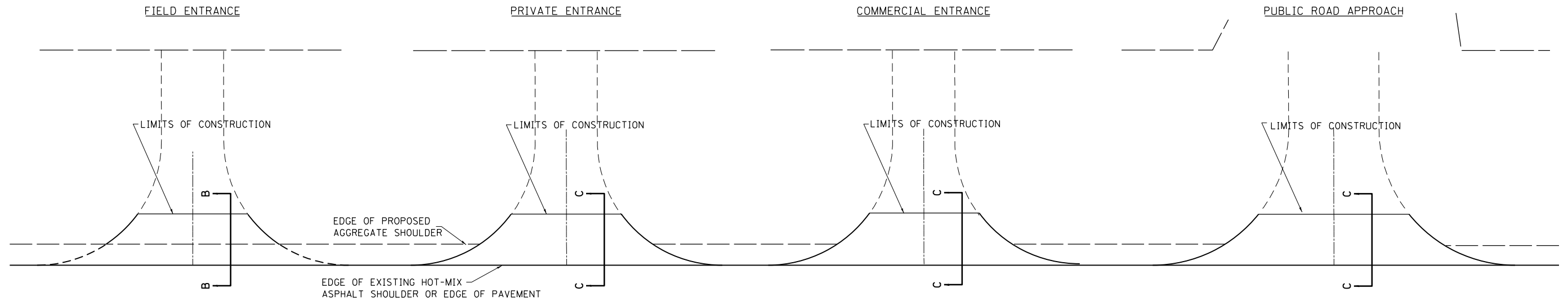
USER NAME = stefnkmk	DESIGNED -	REVISED -
	DRAWN -	REVISED -
PLOT SCALE = 40,0000 * / in.	CHECKED -	REVISED -
PLOT DATE = 2/9/2022	DATE -	REVISED -

**STATE OF ILLINOIS  
DEPARTMENT OF TRANSPORTATION**

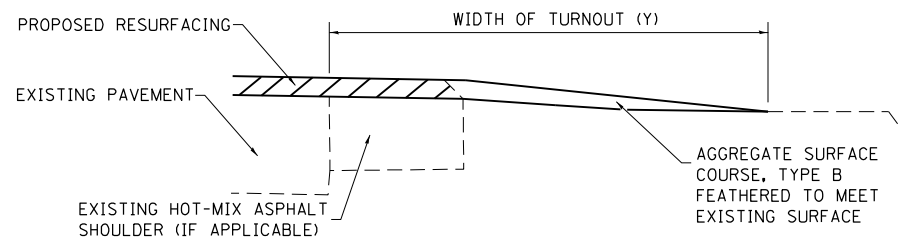
**DETAILS**

SCALE: SHEET OF SHEETS STA. TO STA.

F.A.P. RTE.	SECTION	COUNTY	TOTAL SHEETS	SHEET NO.
116	111 RS-7	COLES	18	12
CONTRACT NO. 74A89				
ILLINOIS FED. AID PROJECT				

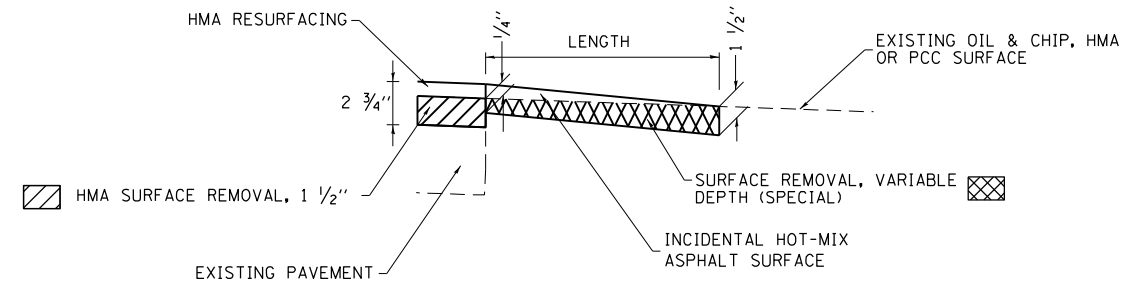


SECTION C-C



TYPICAL SECTION AT MAILBOX TURNOUT

NOTE: SEE STANDARD 406201 FOR MAILBOX TURNOUT DETAILS



SECTION C-C

NOTES

LENGTH = 10' UNLESS OTHERWISE NOTED ON PLANS

IF THERE IS NOT EXISTING HOT-MIX ASPHALT SHOULDER THEN THE ENTRANCE TAPER STARTS AT THE EDGE OF EXISTING PAVEMENT.

MODEL: Default  
 FILE NAME: p:\u0001\paw\_bentley.com\P\INDOT\Documents\IDOT Office\District 7\Projects\74A89\CADD\data\CAD\sheet\74A89-sh-entrance.dgn

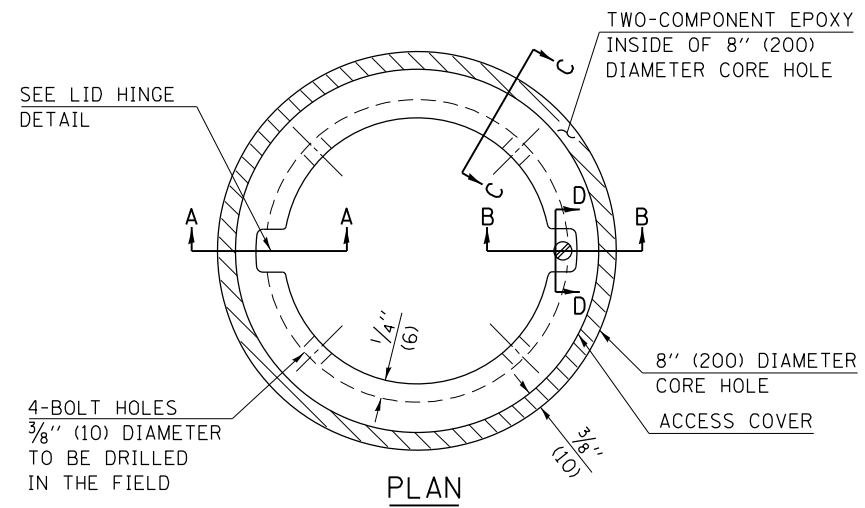
USER NAME = steffnmk	DESIGNED -	REVISED -
	DRAWN -	REVISED -
PLOT SCALE = 40.0760' / in.	CHECKED -	REVISED -
PLOT DATE = 2/9/2022	DATE -	REVISED -

STATE OF ILLINOIS  
DEPARTMENT OF TRANSPORTATION

RURAL ENTRANCE AND MAILBOX TURNOUT DETAILS  
WITH SHOULDERS

SCALE: SHEET OF SHEETS STA. TO STA.

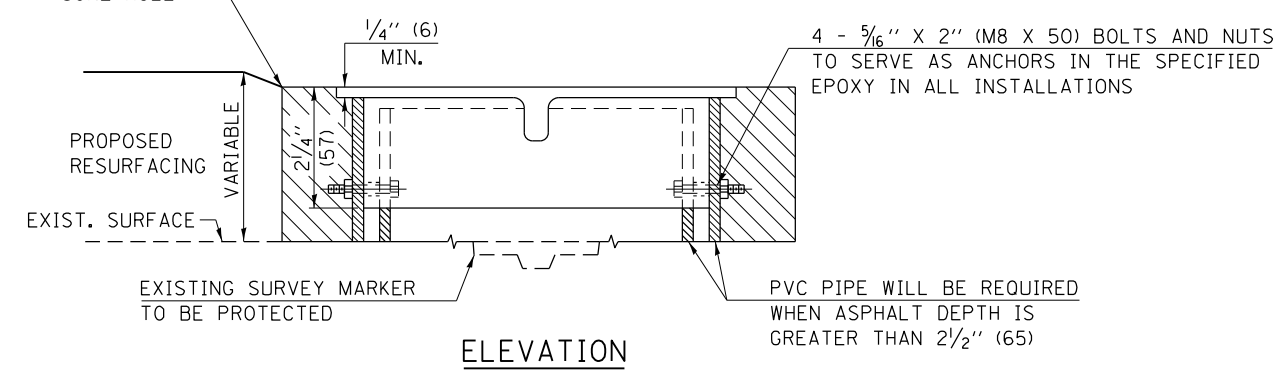
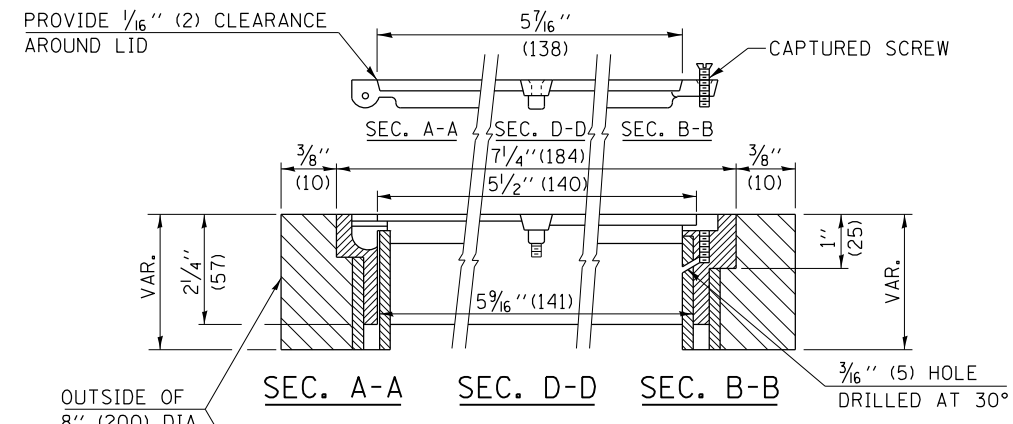
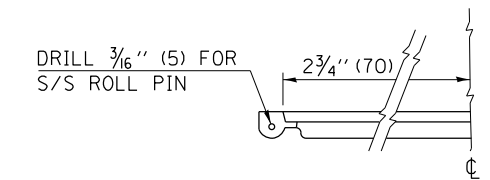
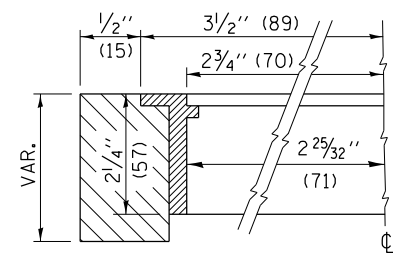
F.A.P. RTE.	SECTION	COUNTY	TOTAL SHEETS	SHEET NO.
116	111 RS-7	COLES	18	13
CONTRACT NO. 74A89				
ILLINOIS FED. AID PROJECT				



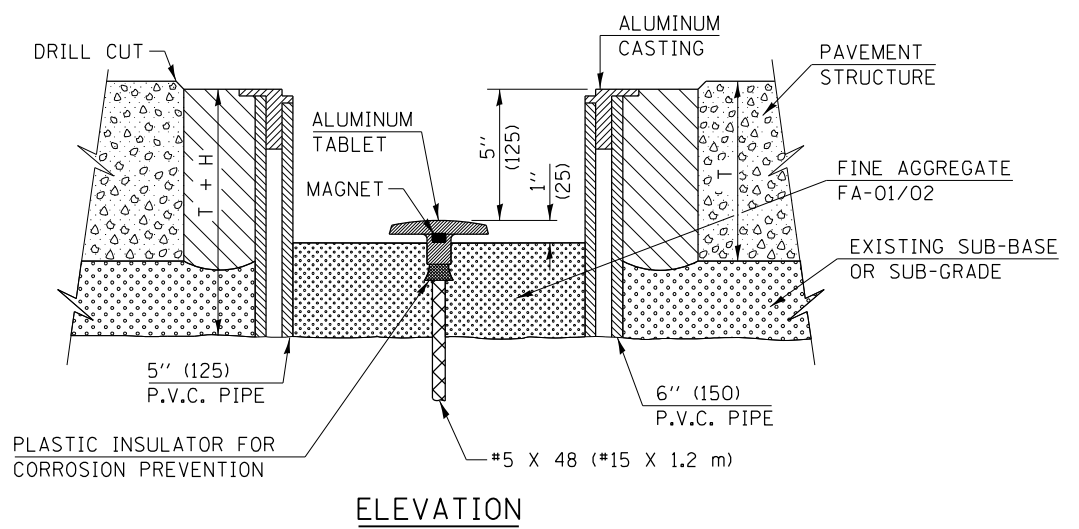
**LEGEND**

- ALUMINUM CASTING
- 5" (125) OR 6" (150) P.V.C. PIPE
- TWO-COMPONENT EPOXY
- T = THICKNESS OF PAVEMENT STRUCTURE
- H = THE THICKNESS OF THE SUB-BASE GRANULAR + 1" (25)

BILL OF MATERIAL	
ALUMINUM CASTING OF THE DIMENSIONS AND SPECIFICATIONS SHOWN OR OTHER SUBJECT TO ENGINEER'S APPROVAL OF SHOP DRAWINGS,	
4 EACH - $\frac{5}{16}$ " X 2" (M8 X 50) BOLTS WITH NUTS, EPOXY,	
5" OR 6" (125 mm OR 150 mm) DIAMETER P.V.C. PIPE, SCHEDULE 40 (WHEN REQUIRED).	



**EXISTING SURVEY MARKER**



**PROPOSED SURVEY MARKER**

NOT TO SCALE

Note: All dimensions are in INCHES (millimeters) unless otherwise shown.

**DISTRICT 7 DETAIL NO. Z0070202**

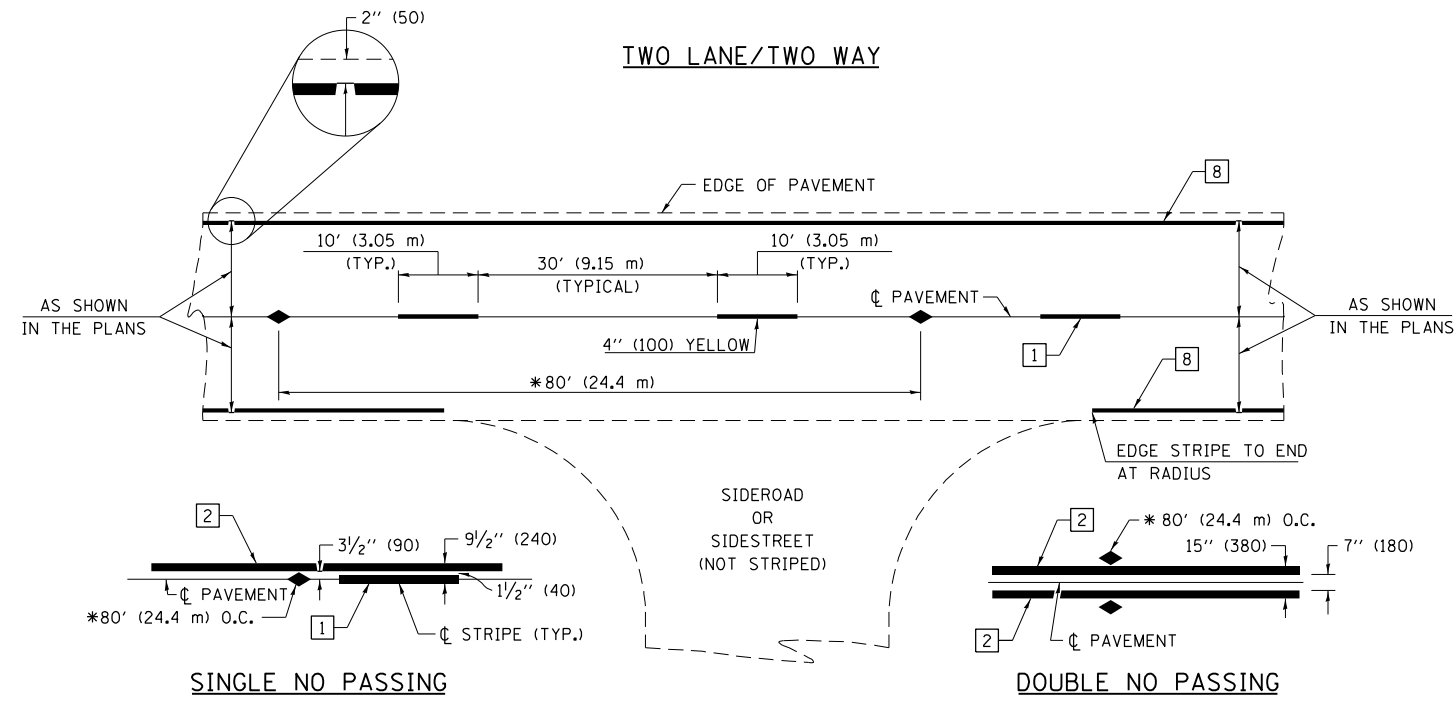
FILE NAME =	USER NAME = steffenk	DESIGNED -	REVISED - --
p:\dot-pw\bentley.com\PWIDOT\Documents\DOT Offices\District 7\Projects\74AB9\CADD\Drawings\Drawings\74AB9-shd-details.dgn		CHECKED -	REVISED -
		DATE -	REVISED -

**STATE OF ILLINOIS  
DEPARTMENT OF TRANSPORTATION**

**SURVEY MARKER VAULT**

SCALE:	SHEET NO.	OF SHEETS	STA.	TO STA.
--------	-----------	-----------	------	---------

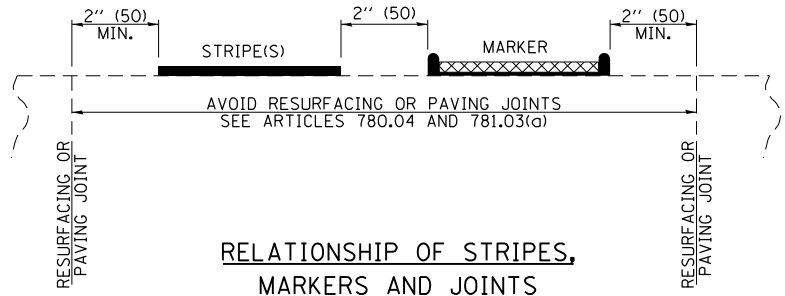
F.A.P. RTE.	SECTION	COUNTY	TOTAL SHEETS	SHEET NO.
116	111 RS-7	COLES	18	14
CONTRACT NO. 74AB9				
FED. ROAD DIST. NO. ILLINOIS FED. AID PROJECT				



**PAVEMENT MARKING LEGEND**

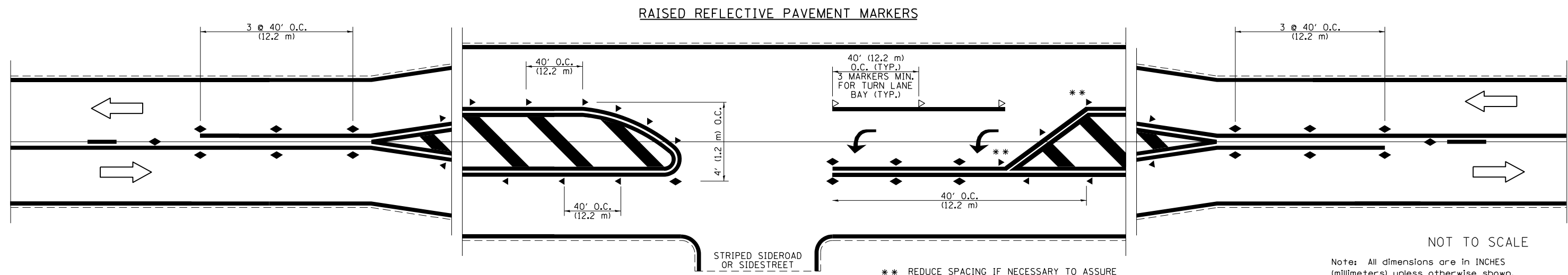
- 1 4" (100) SKIP-DASH (YELLOW)
- 2 4" (100) SOLID (YELLOW)
- 3 12" (300) DIAGONAL (YELLOW)
- 4 4" (100) DOUBLE YELLOW (NARROW)
- 5 12" (300) SOLID WHITE
- 6 RESERVED
- 7 6" (150) SKIP-DASH (WHITE)
- 8 4" (100) SOLID (WHITE)
- 9 12" (300) DIAGONAL (WHITE)
- 10 6" (150) SOLID (WHITE)
- 11 24" (600) STOP BAR (WHITE)
- 12 8" (200) SOLID (WHITE)
- 13 4" (100) PARKING WHITE

\* REDUCE TO 40' (12.2 m) O.C. ON CURVES WITH POSTED OR ADVISORY SPEEDS OF 45 mph (70 km/h) OR LESS.



**TYPICAL PAVEMENT MARKERS LEGEND**

- ◆ TWO-WAY AMBER MARKER
- ▶ ONE-WAY AMBER MARKER
- ▷ ONE-WAY CRYSTAL MARKER

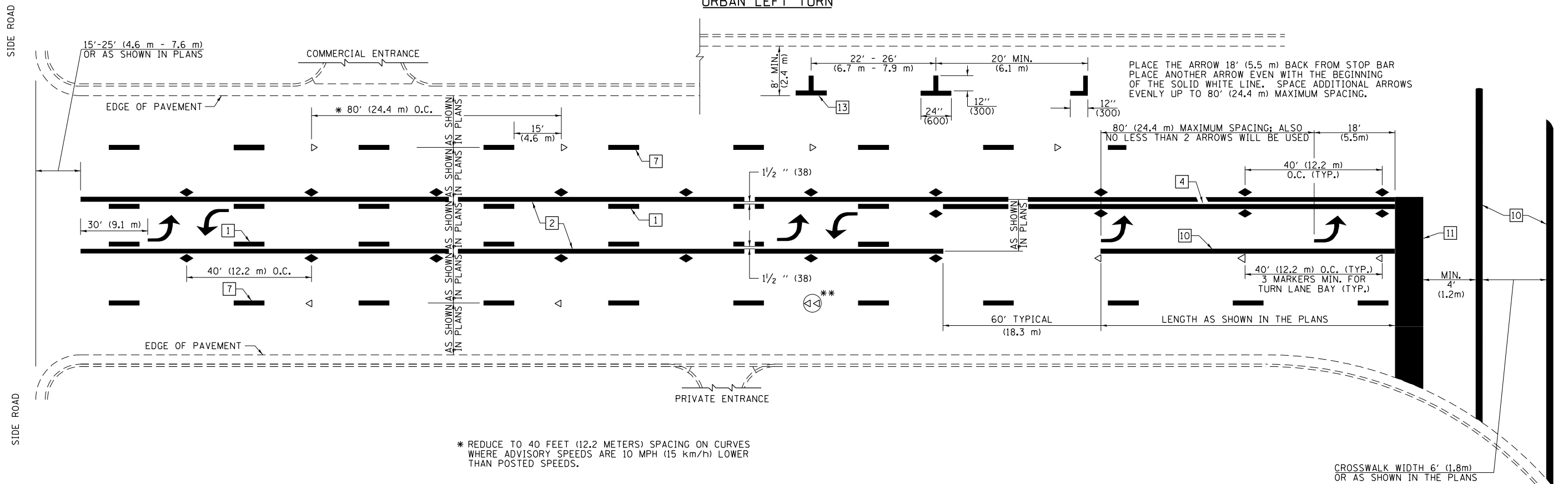


\*\* REDUCE SPACING IF NECESSARY TO ASSURE MARKERS AT CORNER POINTS.

NOT TO SCALE  
Note: All dimensions are in INCHES (millimeters) unless otherwise shown.

FILE NAME =	USER NAME = steffenk	DESIGNED -	REVISED -	<b>STATE OF ILLINOIS DEPARTMENT OF TRANSPORTATION</b>	<b>PAVEMENT MARKING AND RAISED REFLECTIVE PAVEMENT MARKERS (RURAL &amp; URBAN APPLICATIONS)</b>	F.A.P. RTE.	SECTION	COUNTY	TOTAL SHEETS	SHEET NO.
pw:\1ldot-pw\bentley.com\PWIDOT\Documents\DOT Offices\District 7\Projects\74489\CADD\Drawings\Drawings\74489-shd-details.dgn	PLotted SCALE = 40.0000' / in.	CHECKED -	REVISED -			116	111 RS-7	COLES	18	15
PLotted DATE = 2/9/2022	DATE -	REVISED -	REVISED -			CONTRACT NO. 74489				
ILLINOIS FED. AID PROJECT										

URBAN LEFT TURN

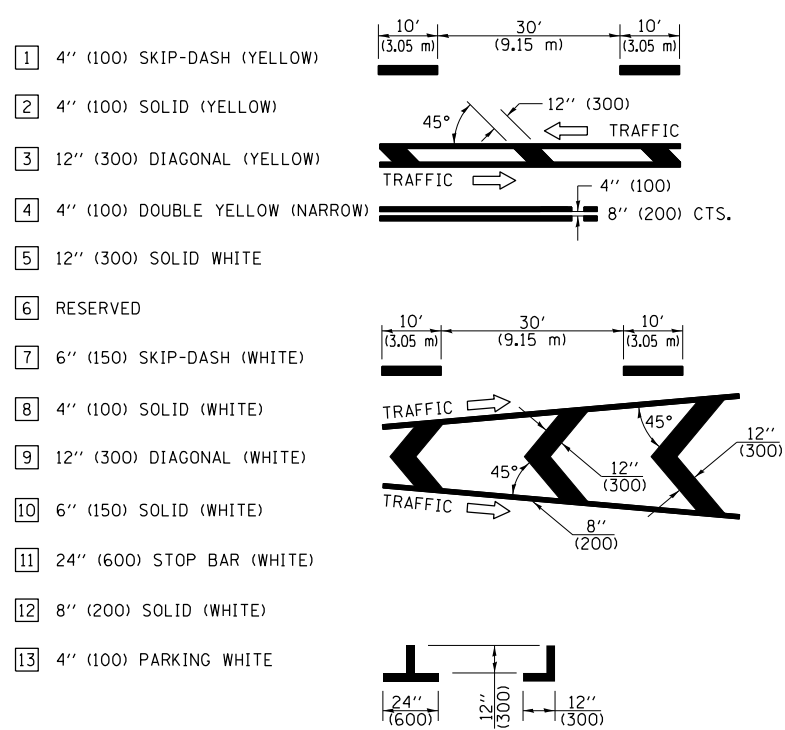


PLACE THE ARROW 18' (5.5 m) BACK FROM STOP BAR  
PLACE ANOTHER ARROW EVEN WITH THE BEGINNING  
OF THE SOLID WHITE LINE. SPACE ADDITIONAL ARROWS  
EVENLY UP TO 80' (24.4 m) MAXIMUM SPACING.

\* REDUCE TO 40 FEET (12.2 METERS) SPACING ON CURVES  
WHERE ADVISORY SPEEDS ARE 10 MPH (15 km/h) LOWER  
THAN POSTED SPEEDS.

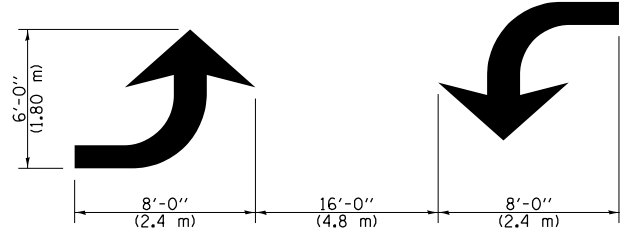
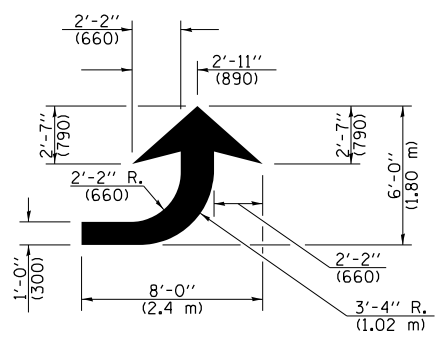
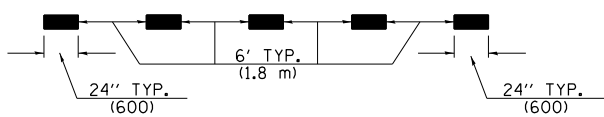
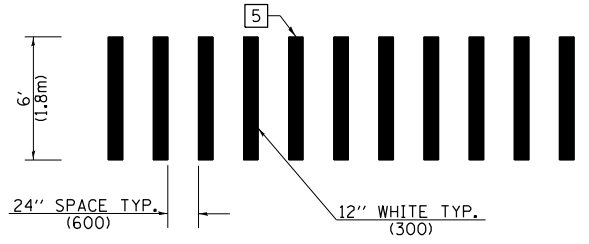
\*\* DOUBLE LANE LINE MARKERS SHALL BE SPECIFIED  
AND SPACED AS SHOWN IN HIGHWAY STANDARD  
781001 FOR MULTI-LANE DIVIDED AND UNDIVIDED  
HIGHWAYS.

PAVEMENT MARKING LEGEND



GENERAL NOTES

- TURN ARROW PAIRS SHALL BE PLACED AT 250' (75 m) INTERVALS AND SHALL BE EVENLY SPACED BETWEEN BOTH ENDS OF THE BIDIRECTIONAL LEFT TURN LANE. USE A MINIMUM OF TWO PAIRS PER BLOCK.
- THE SOLID YELLOW PAVEMENT MARKINGS 2 SHOULD GENERALLY START OR END NEAR THE RADIUS POINT OF EACH STREET RETURN EXCEPT WHERE ONE OR BOTH ENDS WOULD INCLUDE STOP BARS.
- THE SKIP-DASH PAVEMENT MARKINGS 1 OR 7 SHOULD BE CENTERED BETWEEN BOTH ENDS OF EACH CITY BLOCK AND SHALL BE PLACED SO THEY LINE UP ACROSS FROM EACH OTHER.
- USE LARGE ARROW SIZE FOR BOTH RURAL AND URBAN LOCATIONS. (SEE LAST PAGE OF SECTION 780X FOR SYMBOLS TABLE)
- LANE LINE EXTENSIONS SHALL BE THE SAME COLOR AND WIDTH AS THE LANE LINE BEING EXTENDED.
- ALL WHITE SKIP-DASH LINES SHALL BE 6" IN WIDTH.



LEFT ARROW  
REVERSE FOR RIGHT ARROW  
AREA = 15.6 SQ. FT. (1.47 m<sup>2</sup>)  
(WHITE)

TYPICAL DOUBLE TURN ARROWS (WHITE)

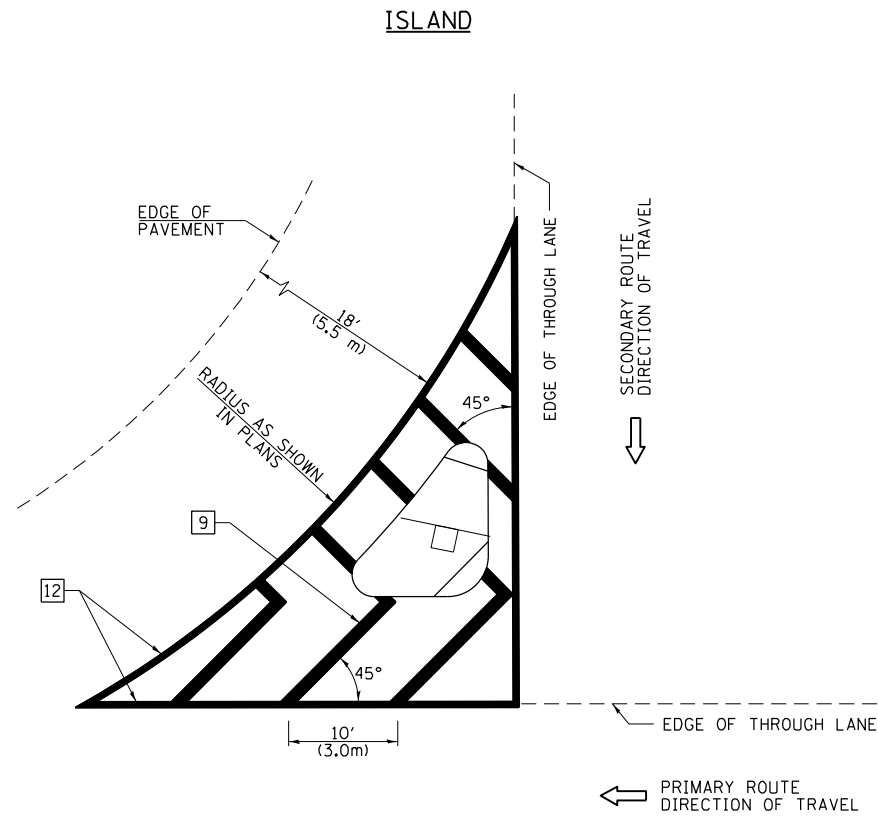
NOT TO SCALE

Note: All dimensions are in INCHES (millimeters) unless otherwise shown.

DISTRICT 7 DETAIL NO. 78000001

FILE NAME =	USER NAME = steffenk	DESIGNED -	REVISED -	<b>STATE OF ILLINOIS DEPARTMENT OF TRANSPORTATION</b>	<b>PAVEMENT MARKING AND RAISED REFLECTIVE PAVEMENT MARKERS (RURAL &amp; URBAN APPLICATIONS)</b>	F.A.P. RTE.	SECTION	COUNTY	TOTAL SHEETS	SHEET NO.
pw:\dot-pw\Bentley.com\PWIDOT\Documents\DOT Offices\District 7\Projects\74489\CADD\Drawings\Drawings\74489-shd-details.dgn		CHECKED -	REVISED -			116	111 RS-7	COLES	18	16
PLOT SCALE = 40.0000' / in.		DATE -	REVISED -			CONTRACT NO. 74AB9				
PLOT DATE = 2/9/2022						ILLINOIS FED. AID PROJECT				





**GENERAL NOTES**

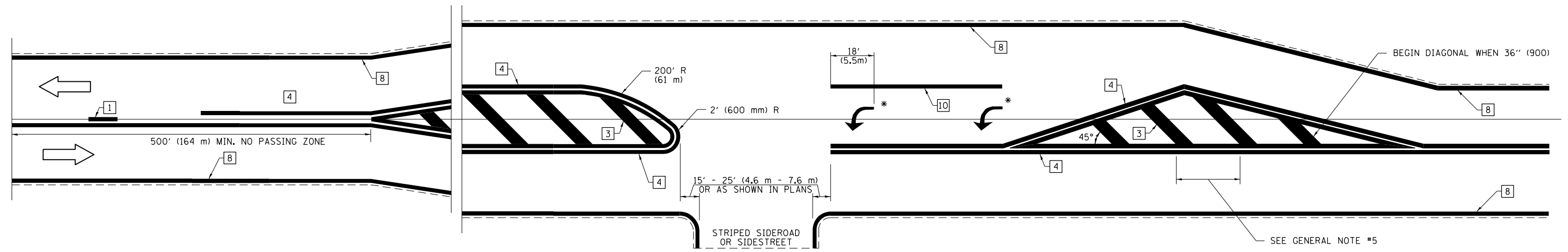
1. RAISED AND CORRUGATED MEDIANS SHALL BE OUTLINED WITH [2] IF PRESENT.
2. SOME OF THE INFORMATION INCLUDED WITH THIS DETAIL MAY NOT BE APPLICABLE TO THIS IMPROVEMENT.
3. PAVEMENT MARKINGS ARE TO BE EXTENDED THROUGH OMISSIONS WHEN APPLICABLE.
4. FINAL PAVEMENT MARKINGS SHALL BE IN PLACE PRIOR TO PLACING ANY RAISED REFLECTIVE PAVEMENT MARKERS.
5. THE FOLLOWING CRITERIA SHALL BE USED FOR SELECTING THE DIAGONAL PAVEMENT MARKING SPACING:

< 30 MPH (< 50 km/h)	15' (4.5 m)
30-45 MPH (50-75 km/h)	20' (6.0 m)
>45 MPH (>75 km/h)	30' (9.0 m)

**PAVEMENT MARKING LEGEND**

- [1] 4" (100) SKIP-DASH (YELLOW)
  - [2] 4" (100) SOLID (YELLOW)
  - [3] 12" (300) DIAGONAL (YELLOW)
  - [4] 4" (100) DOUBLE YELLOW (NARROW)
  - [5] 12" (300) SOLID WHITE
  - [6] RESERVED
  - [7] 6" (150) SKIP-DASH (WHITE)
  - [8] 4" (100) SOLID (WHITE)
  - [9] 12" (300) DIAGONAL (WHITE)
  - [10] 6" (150) SOLID (WHITE)
  - [11] 24" (600) STOP BAR (WHITE)
  - [12] 8" (200) SOLID (WHITE)
  - [13] 4" (100) PARKING WHITE
- 

**RURAL LEFT TURN STRIPING**



\* PLACE AN ARROW 18' (5.5 m) BACK FROM STOP BAR. PLACE ANOTHER ARROW EVEN WITH THE BEGINNING OF THE SOLID WHITE LINE. SPACE ADDITIONAL ARROWS EVENLY UP TO 80' (24.4 m) MAXIMUM SPACING. USE MINIMUM OF 2 ARROWS.

SEE GENERAL NOTE #5

NOT TO SCALE

Note: All dimensions are in INCHES (millimeters) unless otherwise shown.

**DISTRICT 7 DETAIL NO. 7800001**

FILE NAME =	USER NAME = steffenk	DESIGNED -	REVISED -
p:\dot-pw\bentley.com\PWIDOT\Documents\IDOT Offices\District 7\Projects\74489\CADD\Drawings\Drawings\74489-shd-details.dgn		CHECKED -	REVISED -
		DATE -	REVISED -

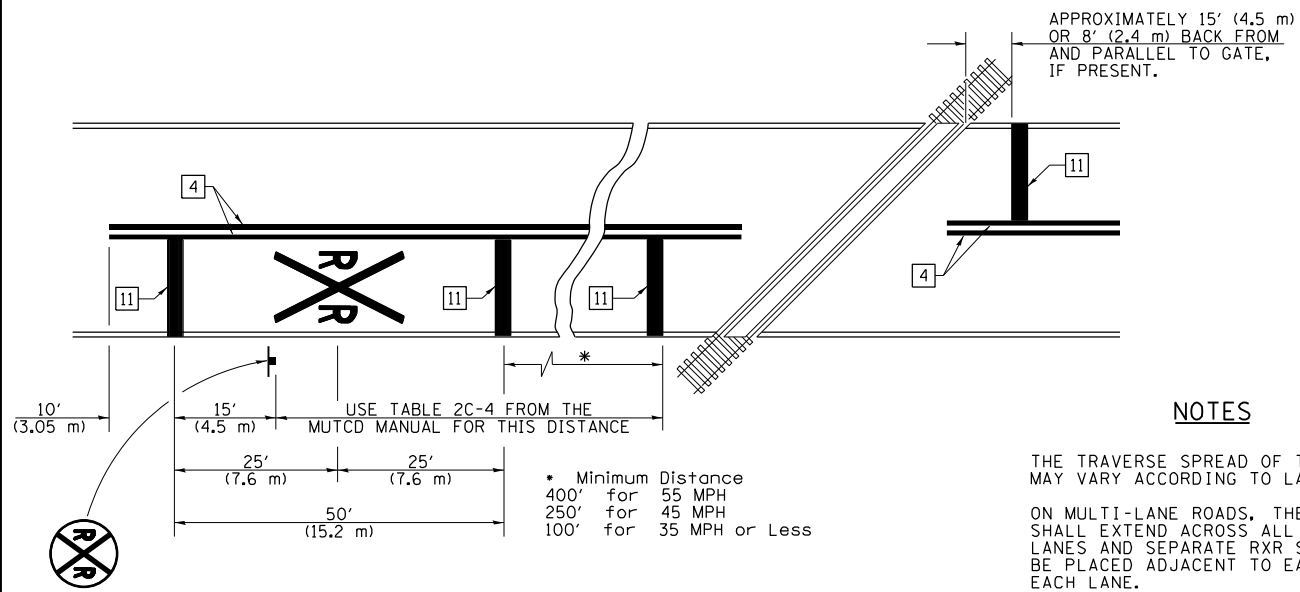
**STATE OF ILLINOIS  
DEPARTMENT OF TRANSPORTATION**

**PAVEMENT MARKING AND RAISED REFLECTIVE PAVEMENT MARKERS  
(RURAL & URBAN APPLICATIONS)**

SCALE: SHEET NO. 3 OF 4 SHEETS STA. TO STA.

F.A.P. RTE.	SECTION	COUNTY	TOTAL SHEETS	SHEET NO.
116	111 RS-7	COLES	18	17
CONTRACT NO. 74489				
ILLINOIS FED. AID PROJECT				

PAVEMENT MARKINGS AT RAILROAD-HIGHWAY GRADE CROSSING



NOTES

THE TRAVERSE SPREAD OF THE "X" MAY VARY ACCORDING TO LANE WIDTH.

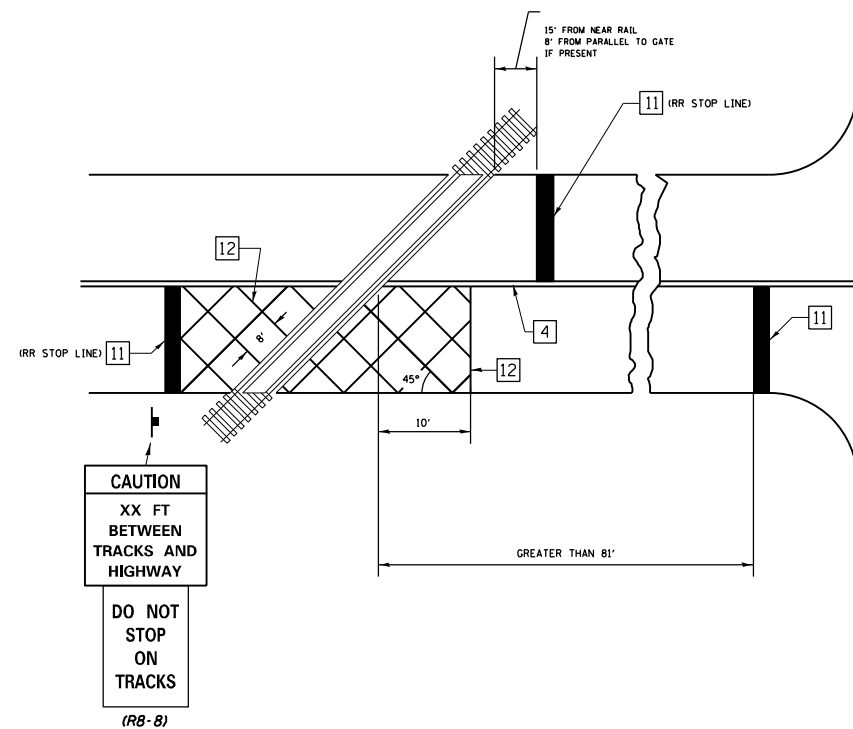
ON MULTI-LANE ROADS, THE STOP LINES SHALL EXTEND ACROSS ALL APPROACH LANES AND SEPARATE RXR SYMBOLS SHALL BE PLACED ADJACENT TO EACH OTHER IN EACH LANE.

WHEN THE PAVEMENT MARKING SYMBOL IS USED, A PORTION OF THE SYMBOL SHOULD BE LOCATED DIRECTLY ADJACENT TO THE ADVANCE WARNING SIGN (W10-1) AS PLACED BY TABLE II-1, CONDITION B OF THE MUTCD.

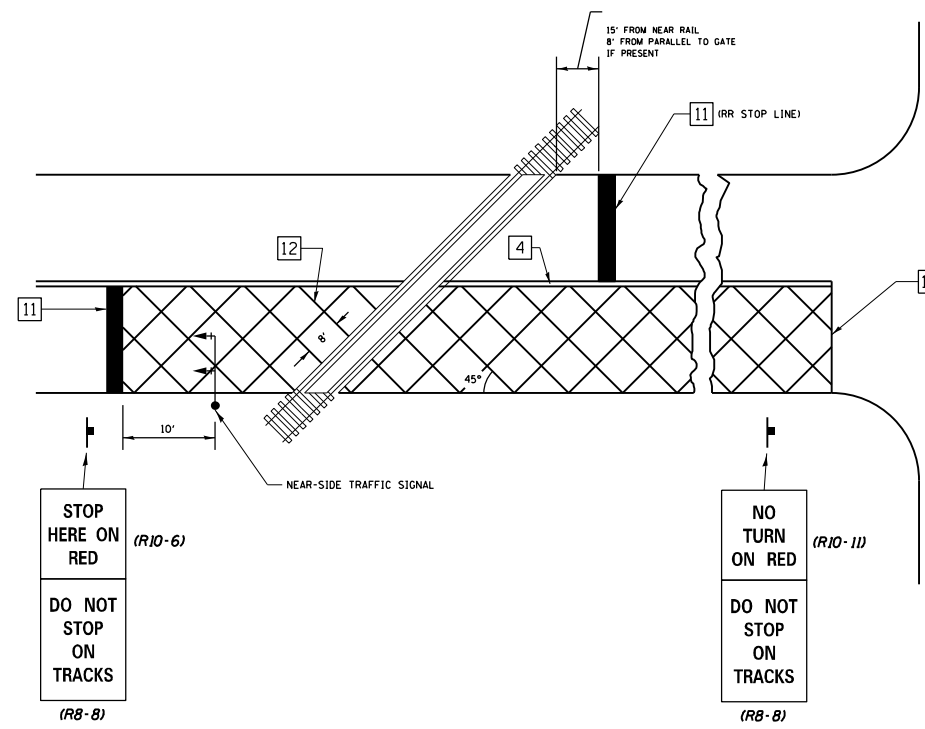
PAVEMENT MARKING LEGEND

- 1 4" (100) SKIP-DASH (YELLOW)
- 2 4" (100) SOLID (YELLOW)
- 3 12" (300) DIAGONAL (YELLOW)
- 4 4" (100) DOUBLE YELLOW (NARROW)
- 5 12" (300) SOLID WHITE
- 6 RESERVED
- 7 6" (150) SKIP-DASH (WHITE)
- 8 4" (100) SOLID (WHITE)
- 9 12" (300) DIAGONAL (WHITE)
- 10 6" (150) SOLID (WHITE)
- 11 24" (600) STOP BAR (WHITE)
- 12 8" (200) SOLID (WHITE)
- 13 4" (100) PARKING WHITE

RAILROAD CROSSING WITH INTERCONNECT ONLY



RAILROAD CROSSING WITH INTERCONNECT AND PRE-SIGNALS



GENERAL NOTES

- SUPPLEMENTAL PAVEMENT MARKINGS TO BE INSTALLED ONLY ON APPROACHES TO INTERSECTIONS CONTROLLED BY TRAFFIC SIGNALS WHICH ARE INTERCONNECTED WITH THE RAILROAD WARNING SIGNALS.
- EXTEND PAVEMENT MARKINGS TO THE INTERSECTION ONLY WHERE NEAR-SIDE TRAFFIC SIGNALS ARE USED.

SUPPLEMENTAL PAVEMENT MARKING TREATMENT FOR RAILROAD-HIGHWAY GRADE CROSSING

NOT TO SCALE

Note: All dimensions are in INCHES (millimeters) unless otherwise shown.

DISTRICT 7 DETAIL NO. 7800001

FILE NAME =	USER NAME = steffenmk	DESIGNED -	REVISED -	<b>STATE OF ILLINOIS DEPARTMENT OF TRANSPORTATION</b>	<b>PAVEMENT MARKING AND RAISED REFLECTIVE PAVEMENT MARKERS (RURAL &amp; URBAN APPLICATIONS)</b>	F.A.P. R.T.E.	SECTION	COUNTY	TOTAL SHEETS	SHEET NO.
p:\1\dot-pw.bentley.com\PWIDOT\Documents\DOT Offices\District 7\Projects\74489\CADD\Drawings\Sheets\74489-shd-details.dgn		CHECKED -	REVISED -			116	111 RS-7	COLES	18	18
PLOT SCALE = 40.0000' / in.		DATE -	REVISED -			CONTRACT NO. 74489				
PLOT DATE = 2/9/2022						ILLINOIS FED. AID PROJECT				