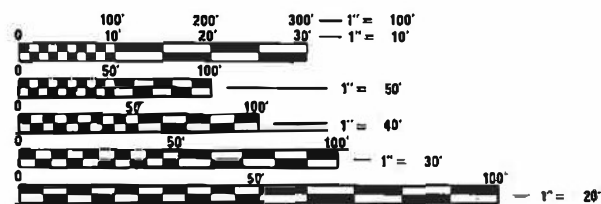


INDEX OF SHEETS:

- 1 COVER SHEET
- 2 COMMITMENTS, GENERAL NOTES, AND JOB SPECIFIC NOTES
- 3 SUMMARY OF QUANTITIES
- 4 TYPICAL BRIDGE DECK SECTION
- 5-8 SCHEDULE OF QUANTITIES

HIGHWAY STANDARDS:

- 701006-05
- 701201-05
- 701301-04
- 701400-11
- 701406-13
- 701411-09
- 701426-09
- 701428-01
- 701456-05
- 701602-10
- 701901-08



FULL SIZE PLANS HAVE BEEN PREPARED USING STANDARD ENGINEERING SCALES. REDUCED SIZED PLANS WILL NOT CONFORM TO STANDARD SCALES. IN MAKING MEASUREMENTS ON REDUCED PLANS, THE ABOVE SCALES MAY BE USED.

J.U.L.I.E.  
JOINT UTILITY LOCATION INFORMATION FOR EXCAVATION  
1-800-892-0123  
OR 811

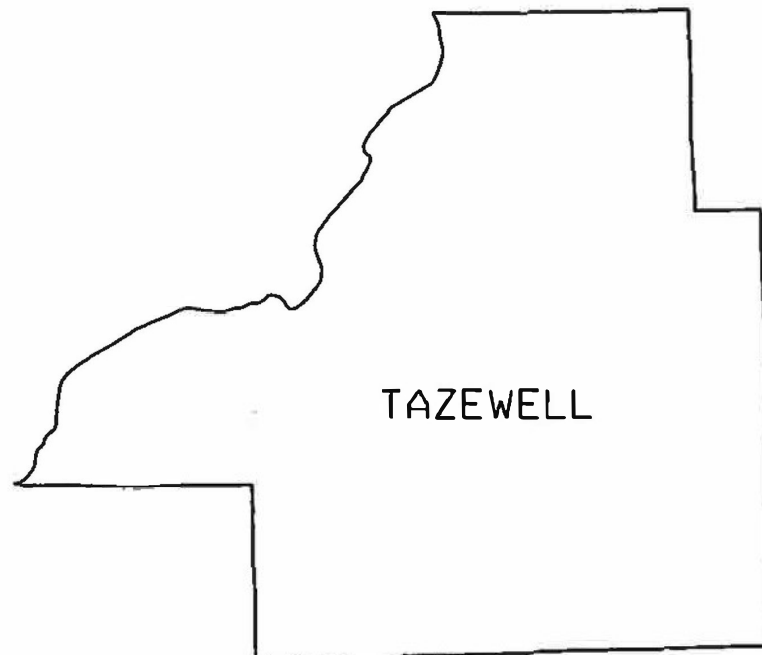
PROJECT ENGINEER: RICHARD DOTSON (309) 671-3455  
PROJECT MANAGER: MICHAEL JACOBS (309) 671-3460

CATALOG NO. 036216-00D  
CONTRACT NO. 68G50

STATE OF ILLINOIS  
DEPARTMENT OF TRANSPORTATION

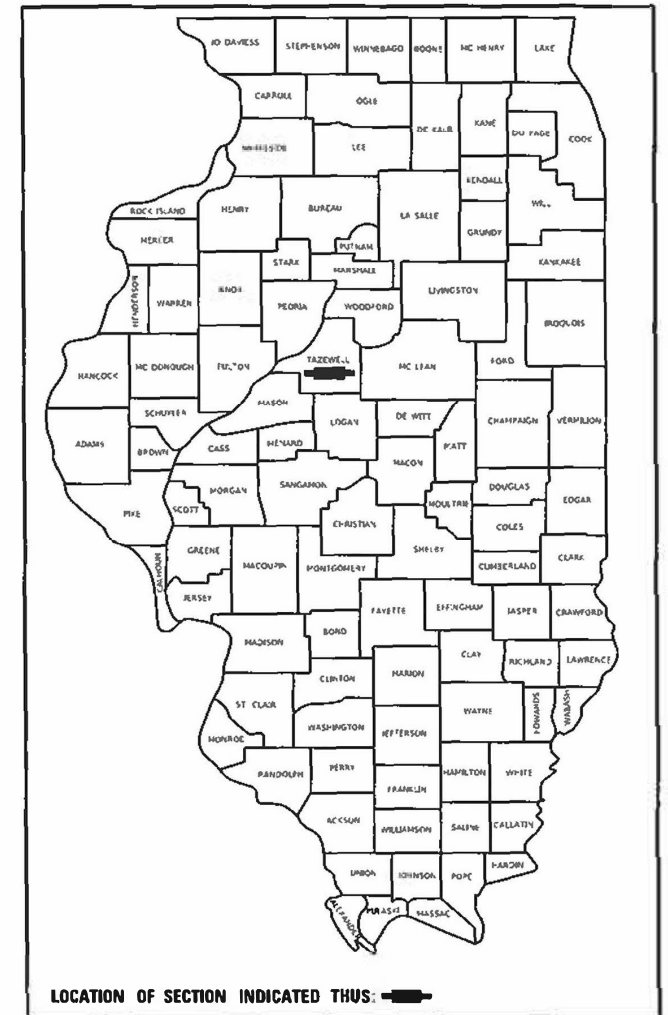
PROPOSED  
HIGHWAY PLANS

VARIOUS ROUTES  
SECTION D4 BRIDGE DECK SEALING 2022  
PROJECT STP-SX3N(126)  
BRIDGE PRESERVATION  
TAZEWELL COUNTY  
C-94-071-21



VAR. RTE.	SECTION	COUNTY	TOTAL SHEETS	SHEET NO.
	D4 BRIDGE DECK SEALING 2022	TAZEWELL	8	1
		ILLINOIS	CONTRACT NO. 68G50	

D-94-052-21



PROJECT DESCRIPTION:

BRIDGE DECK SEALING AT VARIOUS LOCATIONS WITHIN DISTRICT 4.

STATE OF ILLINOIS  
DEPARTMENT OF TRANSPORTATION

SUBMITTED Jan 20 20 22  
Kensel A Barnett RSD  
REGIONAL ENGINEER

March 25 2022  
[Signature]  
ENGINEER OF DESIGN AND ENVIRONMENT

March 23 2022  
[Signature]  
DIRECTOR OF HIGHWAYS PROJECT IMPLEMENTATION

PRINTED BY THE AUTHORITY  
OF THE STATE OF ILLINOIS

GROSS LENGTH = N/A  
NET LENGTH = N/A

**COMMITMENTS**

Commitments are not to be altered without the written approval of all parties to which the commitment was made.

**NO COMMITMENTS HAVE BEEN MADE FOR THIS PROJECT.**

**JOB SPECIFIC NOTES**

Prior to performing any work, the contractor shall coordinate their work effort with the existing construction contracts in their vicinity to alleviate traffic conflicts and assure traffic progression through all work zones.

A flow meter shall be provided by the contractor to accurately measure quantities per bridge. This shall not be paid for separately, but shall be included in the contract unit price per square feet for "Bridge Deck Concrete Sealer".

When applicable, standard 701426 may be used if sealer dries in less than 1 hour.

Work shall be performed and completed only between the hours of 8:30 A.M. and 3:30 P.M. at the following structure locations in Tazewell County:

- 090-0106 EB I-474 OVER IL 29 (STD. 701428 REQUIRED)
- 090-0107 WB I-474 OVER IL 29 (STD. 701428 REQUIRED)
- 090-0108 EB I-474 OVER IL RIVER (STD. 701428 REQUIRED)
- 090-0109 WB I-474 OVER IL RIVER (STD. 701428 REQUIRED)
- 090-0110 SB IL 116 OVER TEN MILE CREEK
- 090-0115 WB US 150 OVER IL RIVER
- 090-0152 IL 40 RAMP OVER I-74
- 090-0153 WB I-74 RAMP OVER I-74
- 090-0155 EB I-74 RAMP OVER MAIN STREET
- 090-0156 CAMP STREET RAMP OVER MAIN STREET
- 090-0157 EB I-74 RAMP OVER CAMP STREET
- 090-0158 EB I-74 OVER ALTORFER LANE (STD. 701428 REQUIRED)
- 090-0159 WB I-74 OVER ALTORFER LANE (STD. 701428 REQUIRED)
- 090-0160 WB I-74 OVER IL 116 (STD. 701428 REQUIRED)
- 090-0161 EB I-74 OVER IL 116 (STD. 701428 REQUIRED)
- 090-0162 EB I-74 RAMP OVER EAST WASHINGTON STREET
- 090-0163 WB I-74 RAMP OVER EAST WASHINGTON STREET
- 090-0172 IL 29 OVER LICK CREEK

MODEL: D:\a\l\ FILE NAME: S:\GEM\PROJECTS\2024\PLANS\SSO\AD\_B\681637\_B\etrc\_Doc\1\_Sg\lmsr\_2019\681637\_Plan.dgn

USER NAME = KHANALS	DESIGNED -	REVISED -
PLOT SCALE = 100.0000' / in.	DRAWN -	REVISED -
PLOT DATE = 8/22/2021	CHECKED -	REVISED -
	DATE -	REVISED -

**STATE OF ILLINOIS  
DEPARTMENT OF TRANSPORTATION**

**COMMITMENTS, GENERAL NOTES, AND JOB SPECIFIC NOTES**

SCALE: SHEET 1 OF 1 SHEETS STA. TO STA.

VAR. RTE.	SECTION	COUNTY	TOTAL SHEETS	SHEET NO.
	D4 BRIDGE DECK SEALING 2022	VARIOUS	8	2
			CONTRACT NO. 68G50	
ILLINOIS FED. AID PROJECT				





BRIDGE DECK CONCRETE SEALER							
SN	FACILITY CROSSED	FEATURE CROSSED	LOCATION	BRIDGE DECK LENGTH FOOT	BRIDGE DECK WIDTH FOOT	BRIDGE DECK AREA SQ FT	BRIDGE PARAPET AREA SQ FT
0900002	WB I-74	DIVERSION CHANNEL	7/8 MI W OF ILL 116	311.7	61	19013.7	2244.24
0900003	EB I-74	DIVERSION CHANNEL	7/8 MI W OF ILL 116	311.7	61	19013.7	2244.24
0900008	EB I-74	US 150,FARM CR&RRS	.5 MI E OF ILL 116	853	29.6	25248.8	6141.6
0900009	WB I-74	US150,FARM CR& RRS	.5 MI E OF ILL 116	803	45.3	36375.9	5781.6
0900019	EB I-74	N MAIN STREET	N MAIN ST IN MORTON	128	42	5376	921.6
0900020	WB I-74	N MAIN STREET	N MAIN ST IN MORTON	128	42	5376	921.6
0900021	EB I-74	BNSF RR (004901L)	1 MI E MORTON INTER.	178	36	6408	1281.6
0900022	WB I-74	BNSF RR (004901L)	1 MI E MORTON INTER.	178	36	6408	1281.6
0900023	EB I-74	MUD CREEK	1.5 MI W DEER CREEK	133	38.6	5133.8	957.6
0900024	WB I-74	MUD CREEK	1.5 MI W DEER CREEK	133	38.6	5133.8	957.6
0900030	IL 8/ IL 116	ILLINOIS RIVER	CEDAR ST AT PEORIA	3750	49.2	184500	27000
0900037	US 150- MEADOWS AVE	FARM CR TPW NYC RR	MEADOWS AVE E. PEO.	740	57.6	42624	5328
0900043	US 150	MUD CREEK	EAST OF MORTON	108	32	3456	777.6
0900044	RIVERFRONT DR	CAMP ST	N CAMP ST, E PEORIA	645	63.2	40764	4644
0900046	RIVERFRONT DR	WEST WASHINGTON ST	.5 MI SW OF I-74	166	57.5	9545	1195.2
0900047	ILL 8/116	FARM CREEK	MAIN AND CAMP E.PEO.	180	76	13680	1296
0900053	ILL 29	CRANE CREEK	1.4 MI S OF ILL 122	132.7	32	4246.4	955.44
0900058	ILL 122	SUGAR CREEK	1 MI E OF MINIER	84	32.6	2738.4	604.8
0900063	ILL 9	MACKINAW RIVER	1.5 MI W OF MACKINAW	490	32	15680	3528
0900069	RAMP FR ILL116 TO150	ILL 116	INTERCHANGE	202	32	6464	1454.4
0900071	EB US 24	ILL 116	INTERCHANGE 24&116	247	48	11856	1778.4
0900072	WB US 24	ILL 116	INTERCHANGE RT24&116	247	38	9386	1778.4
0900073	EB US 24	RAMP FR ILL116 TO150	.75mi E McClugage Br	110	38.3	4213	792
0900074	WB US 24	RAMP FR ILL116 TO 150	.75mi E McClugage Br	110	38.3	4213	792
0900075	FAS 2467 - CH 3	I-74	1.5 MI E OF MORTON	222	28	6216	1598.4
0900084	TENNESSEE RD-TR234	I-74	EAST EDGE OF MORTON	224	26	5824	1612.8
0900089	FONDULAC DR	I-74	JUST E ILL-116 INTER	442	29	12818	3182.4
0900102	WB I-474	EB I-74	2 MI W OF MORTON	353	40	14120	2541.6
0900103	FAU 6720 (PINECREST)	I-474	NEAR CTR 10 GROVELND	252.3	58.8	14835.24	1816.56
0900104	SPFLD RD FAU 6719	I-474	.3 MI N OF MULLER RD	252.3	41.9	10571.37	2023.88
0900105	COLE ST	I-474	0.25 MI N MULLER RD	238.6	42.5	10140.5	1919.76
0900106	EB I-474	ILL 29	S. EDGE OF CR COEUR	244	38.6	9418.4	1960.8
0900107	WB I-474	ILL 29	S EDGE OF CREVE COEU	247	45.1	11139.7	1983.6
0900108	EB I-474	ILLINOIS RIVER	SW OF CREVE COEUR	3421	38.9	133076.9	26106
0900109	WB I-474	ILLINOIS RIVER	SW OF CREVE COEUR	3425	39	133575	26136.4
0900110	SB ILL 116	TEN MILE CREEK	N JCT ILL 116 & 26	158	38.5	6083	1307.2
0900114	ILL 9	ILLINOIS RIVER	ILL RIVER AT PEKIN	2634	77.7	204661.8	18964.8
0900115	WB US 150	ILL RIVER & CRI&P RR	IN PEORIA	4748	var	192190.9	34185.6
<b>PAGE 1 SUBTOTAL</b>						<b>1251524.31</b>	<b>199997.32</b>
<b>PAGE 1 TOTAL</b>						<b>1451521.63</b>	

MODEL: Default  
 FILE NAME: pw\sectors\com\pww\DOT\Documents\DOT\_0\Project\104\_68655m\CADD\Drawings\Drawings\Sheet\over.dgn

USER NAME = jcwitar	DESIGNED -	REVISED -
PLOT SCALE = 100 0014' / in.	DRAWN -	REVISED -
PLOT DATE = 2/18/2022	CHECKED -	REVISED -
	DATE -	REVISED -

**STATE OF ILLINOIS  
DEPARTMENT OF TRANSPORTATION**

**SCHEDULE OF QUANTITIES**

VAR. RTE.	SECTION	COUNTY	TOTAL SHEETS	SHEET NO.
	D4 BRIDGE DECK SEALING 2022	TAZEWELL	8	5
CONTRACT NO. 68G50				
ILLINOIS FED. AID PROJECT				

SCALE: SHEET 1 OF 7 SHEETS STA. TO STA.



BRIDGE DECK CONCRETE SEALER							
SN	FACILITY CROSSED	FEATURE CROSSED	LOCATION	BRIDGE DECK LENGTH FOOT	BRIDGE DECK WIDTH FOOT	BRIDGE DECK AREA SQ FT	BRIDGE PARAPET AREA SQ FT
0900166	I-155NB	I-74	I-155/74INTERCHANGE	231	31	7161	1663.2
0900167	I-74WB&EB	CH 22 JEFFERSON ST	0.2 Mi W. of US 150	132	113.5	14982	950.4
0900169	I-74	US150 & Bike Path	.5 MI W MORTON INTER	314.9	112	35268.8	2267.28
0900171	ILL 26	TEN MILE CREEK	N OF ILL 116	126	40	5040	924.8
0900172	ILL 29	LICK CREEK	1 MI N OF ILL 98	139	84	11676	1020.3
0900173	ILL 98	LICK CREEK	2.5 MI W OF MORTON	88.3	36	3178.8	648.1
0900174	ILL 29	LITTLE LICK CREEK	AT ELM ST IN N PEKIN	85	78.5	6672.5	623.9
0900176	US 150- MEADOWS AVE	LITTLE FARM CREEK	1.7 MI E OF ILL 8	63	49.2	3099.6	453.6
0900177	ILL 9	MACKINAW RIV TRIB	.5 MI W OF MACKINAW	93.5	36	3366	673.2
0900178	IL 9	MUD CREEK	2.5 MI W OF MACKINAW	188.5	36	6786	1357.2
0900179	NB ILL 116	TEN MILE CREEK	N OF ILL 26	182.9	40	7316	1316.88
PAGE 3 SUBTOTAL						104546.7	11898.86
PAGE 3 TOTAL						116445.56	
GRAND TOTAL						2285865	

MODEL: D:\coul MODEL: D:\coul  
 FILE NAME: P:\W\W\paw\_bentley.com:HWDOT\Documents\DOT\_Offices\District\_4\Projects\1314\_68G50\ACAD\Drawings\1314\_68G50.dgn

USER NAME = lewisar	DESIGNED -	REVISED -
	DRAWN -	REVISED -
PLOT SCALE = 100.0018' / in.	CHECKED -	REVISED -
PLOT DATE = 2/18/2022	DATE -	REVISED -

**STATE OF ILLINOIS**  
**DEPARTMENT OF TRANSPORTATION**

**SCHEDULE OF QUANTITIES**

SCALE: SHEET 3 OF 7 SHEETS STA. TO STA.

VAR RTE	SECTION	COUNTY	TOTAL SHEETS	SHEET NO.
	D4 BRIDGE DECK SEALING 2022	TAZEWELL	8	7
			CONTRACT NO. 68G50	
ILLINOIS FED. AID PROJECT				

