

STATE OF ILLINOIS
DEPARTMENT OF TRANSPORTATION

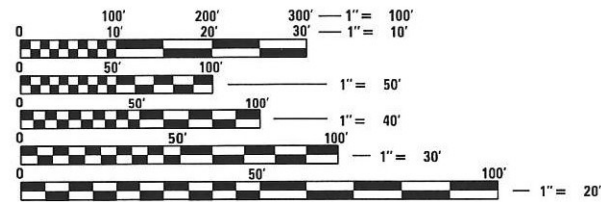
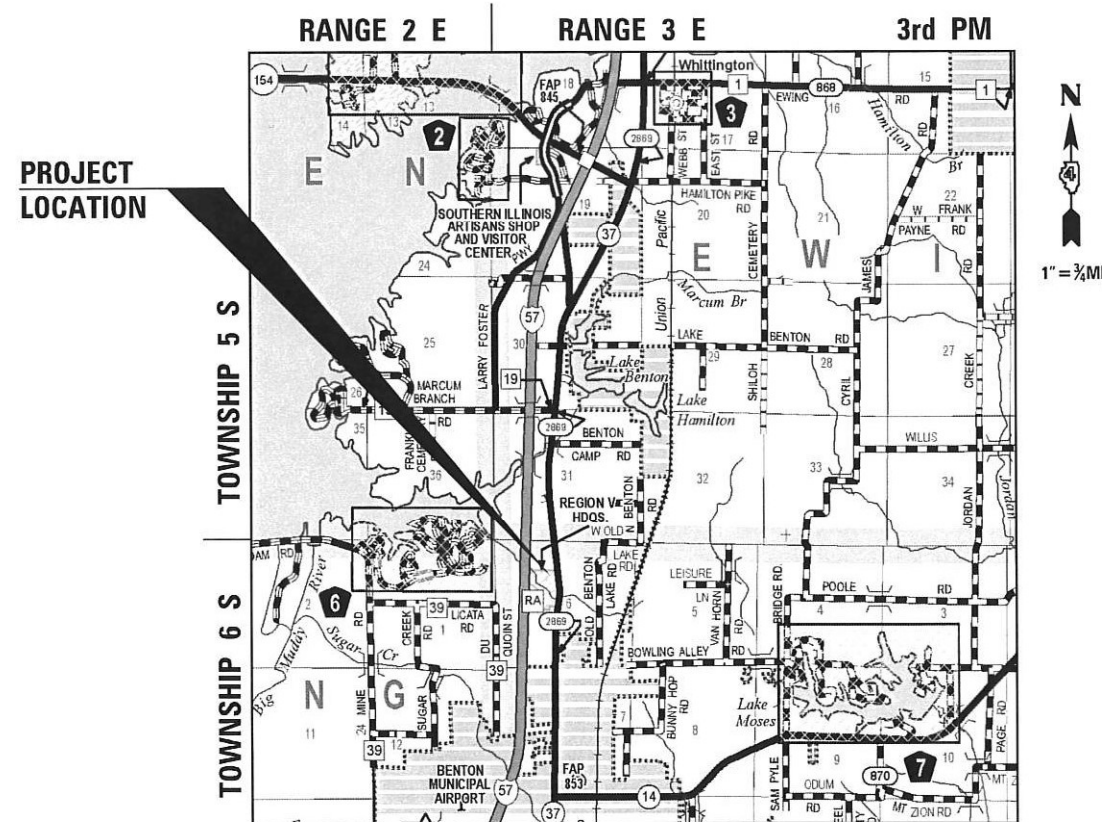
F.A. RTE.	SECTION	COUNTY	TOTAL SHEETS	SHEET NO.
	IDNR R5 PARKING	FRANKLIN	16	1
		ILLINOIS	CONTRACT NO. 46931	

FOR INDEX OF SHEETS, SEE SHEET NO. 2

PROPOSED
HIGHWAY PLANS

IDOT/DNR STATEWIDE
IDNR REGION 5 PARKING LOT
SECTION IDNR R5 PARKING
ROAD AND PARKING IMPROVEMENTS
FRANKLIN COUNTY

IDNR FILE NO. 5-21-035
C-30-001-23

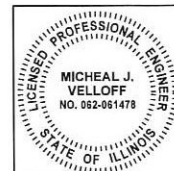


FULL SIZE PLANS HAVE BEEN PREPARED USING STANDARD ENGINEERING SCALES. REDUCED SIZED PLANS WILL NOT CONFORM TO STANDARD SCALES. IN MAKING MEASUREMENTS ON REDUCED PLANS, THE ABOVE SCALES MAY BE USED.

J.U.L.I.E.
JOINT UTILITY LOCATION INFORMATION FOR EXCAVATORS
1-800-892-0123
OR 811

CONTRACT NO. 46931

THIS SEAL COVERS ALL SHEETS EXCEPT FOR SHEET 11 ENTRANCE SIGN DETAILS



15 Feb 20 22
Michael J. Velloff
MICHAEL J. VELLOFF
ILLINOIS REG. PROFESSIONAL ENGINEER NO. 062-061478
EXPIRATION DATE 03-01-2022

Kaskaskia
Engineering Group, LLC
208 E. Main St., Suite 100
Belleville, Illinois 62220
618.233.5877 phone
618.233.5977 fax
www.kaskaskiaeng.com
PROFESSIONAL REGISTRATIONS
Illinois Professional Design Firm
Professional Engineering Group
LICENSE NO.
184.004773
20-5080586

STATE OF ILLINOIS
DEPARTMENT OF TRANSPORTATION

SUBMITTED MARCH 25 20 22

REGIONAL ENGINEER

March 25 20 22
ENGINEER OF DESIGN AND ENVIRONMENT

March 25 20 22
DIRECTOR OF HIGHWAYS PROJECT IMPLEMENTATION

PRINTED BY THE AUTHORITY
OF THE STATE OF ILLINOIS

INDEX

1	COVER
2	INDEX OF SHEETS, HIGHWAY STANDARDS AND GENERAL NOTES
3	SUMMARY OF QUANTITIES
4	TYPICAL SECTIONS
5	SCHEDULE OF QUANTITIES
6	SITE IMPROVEMENTS
7	GRADING PLAN
8	EROSION CONTROL PLAN
9	DETAILS
10	PAVEMENT MARKING DETAILS
11	ENTRANCE SIGN DETAILS
12-16	ELECTRICAL SHEETS

STANDARDS

000001-08	STANDARD SYMBOLS, ABBREVIATIONS AND PATTERNS
280001-07	TEMPORARY EROSION CONTROL SYSTEMS
420701-03	PAVEMENT WELDED WIRE REINFORCEMENT
720001-01	SIGN PANEL MOUNTING DETAILS
720006-04	SIGN PANEL ERECTION DETAILS
729001-01	APPLICATIONS OF TYPE A & B METAL POSTS (FOR SIGNS AND MARKERS)
780001-05	TYPICAL PAVEMENT MARKINGS
001006	DECIMAL OF AN INCH AND OF A FOOT
701901-08	TRAFFIC CONTROL DEVICES
821101-02	LUMINAIRE WIRING POLE
836001-04	LIGHT POLE FOUNDATION

GENERAL NOTES

SIGN LOCATIONS MAY BE ADJUSTED IN THE FIELD TO AVOID ANY FOUND UTILITIES.

POTHOLES IN EXISTING PAVEMENT THAT ARE FOUND TO BE UNSUITABLE SHALL BE REMOVED AND REPLACED ACCORDING TO ARTICLE 202.03. AN ESTIMATED QUANTITY OF 1 CUBIC YARD FOR REMOVAL AND DISPOSAL OF UNSUITABLE MATERIAL HAS BEEN INCLUDED IN THE SUMMARY OF QUANTITIES.

EXISTING CRACKS WIDER THAN 1/4" IN PARKING LOTS SHALL BE SEALED WITH FIBER-MODIFIED ASPHALT CRACK SEALING PRIOR TO THE PLACEMENT OF PARKING LOT SEAL COAT. AN ASSUMED QUANTITY OF 1 FOOT PER 3 SQUARE YARDS OF PARKING LOT HAS BEEN INCLUDED IN THE SUMMARY OF QUANTITIES.

EXISTING EARTH SHOULDERS THAT ENTRAP WATER ADJACENT TO THE PAVEMENT EDGE SHALL BE CORRECTED ACCORDING TO ARTICLE 212.05.

EXISTING TREES AND TREE CANOPY SHALL BE PROTECTED/CLEARED ACCORDING TO ARTICLE 201. ANY BRANCHES BROKEN OR DAMAGED DURING CLEARING OR CONSTRUCTION OPERATIONS SHALL BE PRUNED ACCORDING TO ANSI A300 OR AT THE DIRECTION OF IDNR STAFF/BIOLOGIST. PRUNING SHALL BE INCLUDING IN THE COST OF OTHER ITEMS. TREE TRUNK PROTECTION SHALL BE MEASURED AND PAID BY EACH.

TOPSOIL FURNISH AND PLACE, VARIABLE DEPTH SHALL BE PLACED AND GRADED AFTER HMA SURFACING IS COMPLETE. THE TOPSOIL SHALL BE IMMEDIATELY GRADED THEN COVERED WITH SEEDING, NUTRIENTS AND MULCH WITHIN 24 HOURS. TOPSOIL SHOULD NOT BE PLACED IF HEAVY RAIN IS FORECASTED WITHIN 24 HOURS OF PLACEMENT.

CONTRACTOR IS RESPONSIBLE FOR COORDINATING WITH IDNR PARK STAFF AND FOR FOLLOWING J.U.L.I.E. TO MAKE SURE THE PRIVATE LINES AND FACILITIES ARE LOCATED, MARKED, AND AVOIDED.

NO BAT RESTRICTIONS FOR TREE REMOVAL.

HOT-MIX ASPHALT MIXTURE DESIGN TABLE

LOCATION(S):	IDNR REGION 5 HEADQUARTERS
MIXTURE USE(S)	SURFACE COURSE
PG:	PG 64-22
DESIGN VOIDS:	4.0% NDES = 50
MIXTURE COMPOSITION:	IL 9.5FG
FRICTION AGGREGATE:	MIXTURE "C"
MIXTURE WEIGHT:	112.0 LB/SQ YD/IN
QUALITY MANAGEMENT PROGRAM:	QC/QA
SUBLOT SIZE:	N/A
MATERIAL TRANSFER DEVICE (REQD)	NO

REV. - MS

MODEL: D:\asht\1118_1009_13_IDNR_Region 5_Headquarters\0_IDOT\CAD_Sheets\8-1009_13_002_Gen_Notes.dgn



USER NAME = rj01
 PLOT SCALE = 2.0000' / in.
 PLOT DATE = 4/1/2022

DESIGNED -
 DRAWN
 CHECKED -
 DATE -

REVISED -
 REVISED
 REVISED -
 REVISED -

**STATE OF ILLINOIS
 DEPARTMENT OF TRANSPORTATION**

**IDNR REGION 5 HEADQUARTERS - ROAD & PARKING IMPROVEMENTS
 INDEX OF SHEETS, HIGHWAY STANDARDS AND GENERAL NOTES**

SCALE: SHEET OF SHEETS STA. TO STA.

F.A. RTE.	SECTION	COUNTY	TOTAL SHEETS	SHEET NO.
	IDNR R5 PARKING	FRANKLIN	16	2
			CONTRACT NO. 46931	
			ILLINOIS FED. AID PROJECT	

SUMMARY OF QUANTITIES

100% STATE
0005

CODE NO.	ITEM	ABBREVIATED ITEM NAME	UNIT	TOTAL QUANTITIES
20100110	TREE REMOVAL (6 TO 15 UNITS DIAMETER)	TREE REMOV 6-15	UNIT	49
20100210	TREE REMOVAL (OVER 15 UNITS DIAMETER)	TREE REMOV OVER 15	UNIT	146
20101100	TREE TRUNK PROTECTION	TREE TRUNK PROTECTION	EACH	27
20200100	EARTH EXCAVATION	EARTH EXCAVATION	CU YD	280
20201200	REMOVAL AND DISPOSAL OF UNSUITABLE MATERIAL	REM & DISP UNS MATL	CU YD	39
21101600	TOPSOIL FURNISH AND PLACE, VARIABLE DEPTH	TOPSOIL F & P VAR DP	SQ YD	763
25000330	SEEDING, CLASS 6	SEEDING CL 6	ACRE	0.16
25000400	NITROGEN FERTILIZER NUTRIENT	NITROGEN FERT NUTR	POUND	15
25000500	PHOSPHORUS FERTILIZER NUTRIENT	PHOSPHORUS FERT NUTR	POUND	15
25000600	POTASSIUM FERTILIZER NUTRIENT	POTASSIUM FERT NUTR	POUND	15
25100105	MULCH, METHOD 1	MULCH METHOD 1	ACRE	0.16
28000250	TEMPORARY EROSION CONTROL SEEDING	TEMP EROS CONTR SEED	POUND	19
28000400	PERIMETER EROSION BARRIER	PERIMETER EROS BAR	FOOT	825
28000500	INLET AND PIPE PROTECTION	INLET & PIPE PROTECT	EACH	2
35100100	AGGREGATE BASE COURSE, TYPE A	AGG BASE CSE A	TON	226
40400001	FIBER-MODIFIED ASPHALT CRACK SEALING	FIBR MOD ASP CRK SEAL	FOOT	159
40600275	BITUMINOUS MATERIALS (PRIME COAT)	BIT MATLS PR CT	POUND	990
40600290	BITUMINOUS MATERIALS (TACK COAT)	BIT MATLS TACK CT	POUND	1,357
40600982	HOT-MIX ASPHALT SURFACE REMOVAL - BUTT JOINT	HMA SURF REM BUTT JT	SQ YD	21
40604000	HOT-MIX ASPHALT SURFACE COURSE, IL-9.5FG, MIX "C", N50	HMA SC IL-9.5FG C N50	TON	437
42000300	PORTLAND CEMENT CONCRETE PAVEMENT 8"	PCC PVT 8	SQ YD	42
44000600	SIDEWALK REMOVAL	SIDEWALK REM	SQ FT	2
44200050	WELDED WIRE REINFORCEMENT	WELDED WIRE REINF	SQ YD	40
44213200	SAW CUTS	SAW CUTS	FOOT	185
50800105	REINFORCEMENT BARS	REINFORCEMENT BARS	POUND	55
67100100	MOBILIZATION	MOBILIZATION	L SUM	1
* 72000100	SIGN PANEL - TYPE 1	SIGN PANEL T1	SQ FT	2
* 72900100	METAL POST - TYPE A	METAL POST TYA	FOOT	13
* 78001100	PAINT PAVEMENT MARKING - LETTERS AND SYMBOLS	PT PVT MK LTRS & SYMB	SQ FT	7
* 78001110	PAINT PAVEMENT MARKING - LINE 4"	PAINT PVT MK LINE 4	FOOT	532
* 78001150	PAINT PAVEMENT MARKING - LINE 12"	PAINT PVT MK LINE 12	FOOT	78
* 81028730	UNDERGROUND CONDUIT, COILABLE NONMETALLIC CONDUIT, 1-1/4" DIA.	UNDRGRD C CNC 1 1/4	FOOT	339
* 81300320	JUNCTION BOX, STAINLESS STEEL, ATTACHED TO STRUCTURE 8"X8"X6"	JUN BX SS AS 8X8X6	EACH	1
* 81400730	HANDHOLE, COMPOSITE CONCRETE	HANDHOLE C CONC	EACH	2
* 81702110	ELECTRIC CABLE IN CONDUIT, 600V (XLP-TYPE USE), 1/C NO. 10	EC C XLP USE 1C 10	FOOT	1,197
* 83600200	LIGHT POLE FOUNDATION, 24" DIAMETER	LIGHT POLE FDN 24D	FOOT	12
20004002	BOLLARDS	BOLLARDS	EACH	3
X0301339	REMOVE EXISTING PARKING BLOCKS	REM EX PARKING BLOCKS	EACH	9
X0323378	CONCRETE PARKING BLOCKS	CONC PARKING BLOCKS	EACH	9

* SPECIALTY ITEM

SUMMARY OF QUANTITIES

100% STATE
0005

CODE NO.	ITEM	ABBREVIATED ITEM NAME	UNIT	TOTAL QUANTITIES
* X0324062	ENTRANCE SIGN	ENTRANCE SIGN	L SUM	1
* X0324390	FLOOD LIGHTING UNIT	FLOOD LIGHTING UNIT	EACH	5
X0325800	PARKING LOT SEAL COAT	PARK LOT SEAL CT	SQ YD	475
X0325815	REMOVE EXISTING CABLE	REMOVE EXISTING CABLE	FOOT	420
X0350810	BOLLARD REMOVAL	BOLLARD REMOVAL	EACH	1
X0556100	PARTIAL DEPTH PATCHING (SPECIAL)	PART DEPTH PATCH SPL	SQ YD	5
* X1400443	MODIFY CIRCUIT BREAKER PANEL (SPECIAL)	MOD CIR BRKR PAN SPL	EACH	1
X7240300	SIGN REMOVAL	SIGN REMOVAL	EACH	1
* X8250500	LIGHTING UNIT COMPLETE, SPECIAL	LIGHTING UNIT COMP SP	EACH	2
* X8250505	LIGHTING CONTROLLER, SPECIAL	LIGHT CONTROLLER SPL	EACH	1

MODEL: Default
FILE NAME: P18_1009.13 IDNR Region 5 Headquarters IDOT/CAD_Sheets/18-1009.13 003-500.dgn



201 N. Maple St., Suite 202
Kaskaskia, Illinois 62401
618.352.2877 Phone
618.352.2877 Fax
www.kaskaskiaeng.com

USER NAME = rjo
DESIGNED -
DRAWN -
CHECKED -
DATE -
PLOT SCALE = 2.0000' / in.
PLOT DATE = 2/17/2022

DESIGNED -
DRAWN -
CHECKED -
DATE -
REVISED -
REVISED -
REVISED -
REVISED -

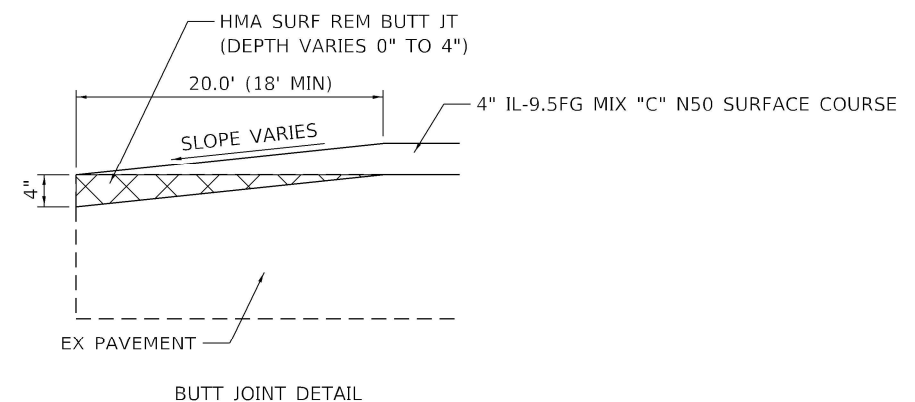
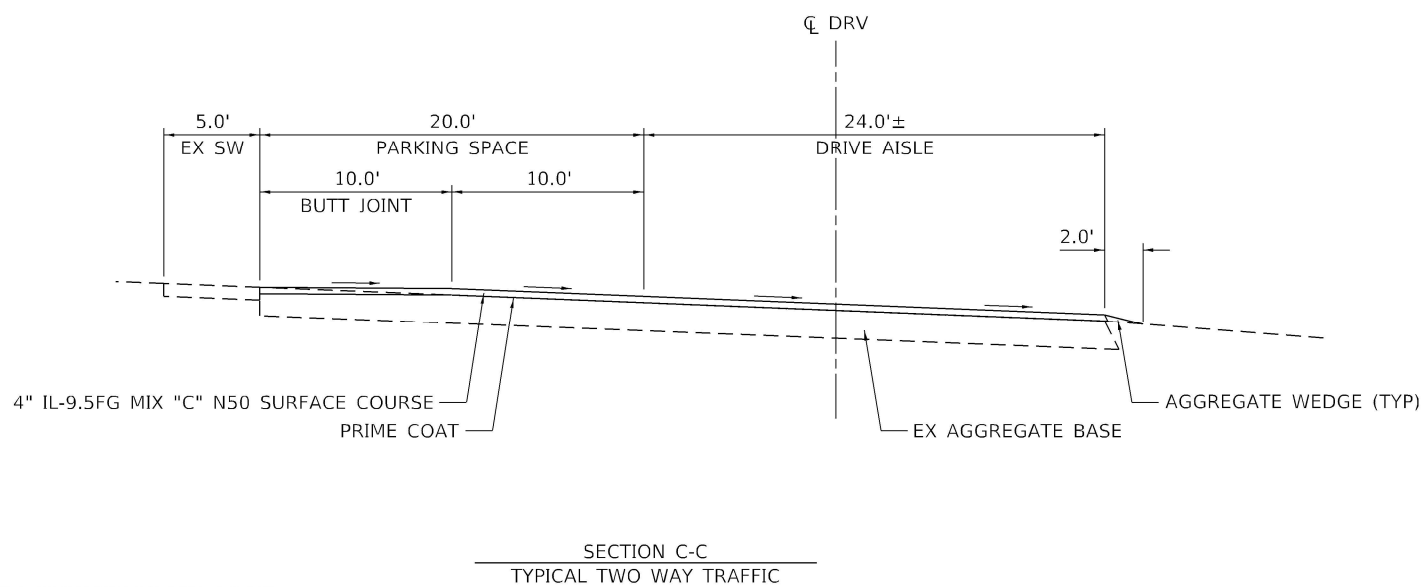
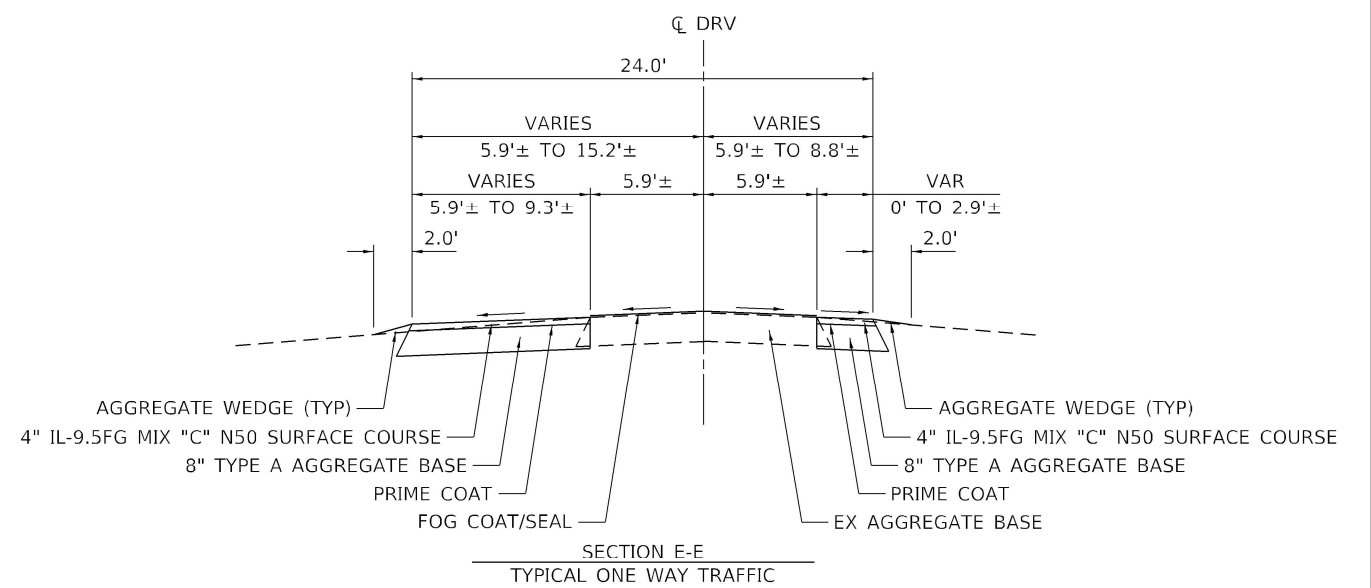
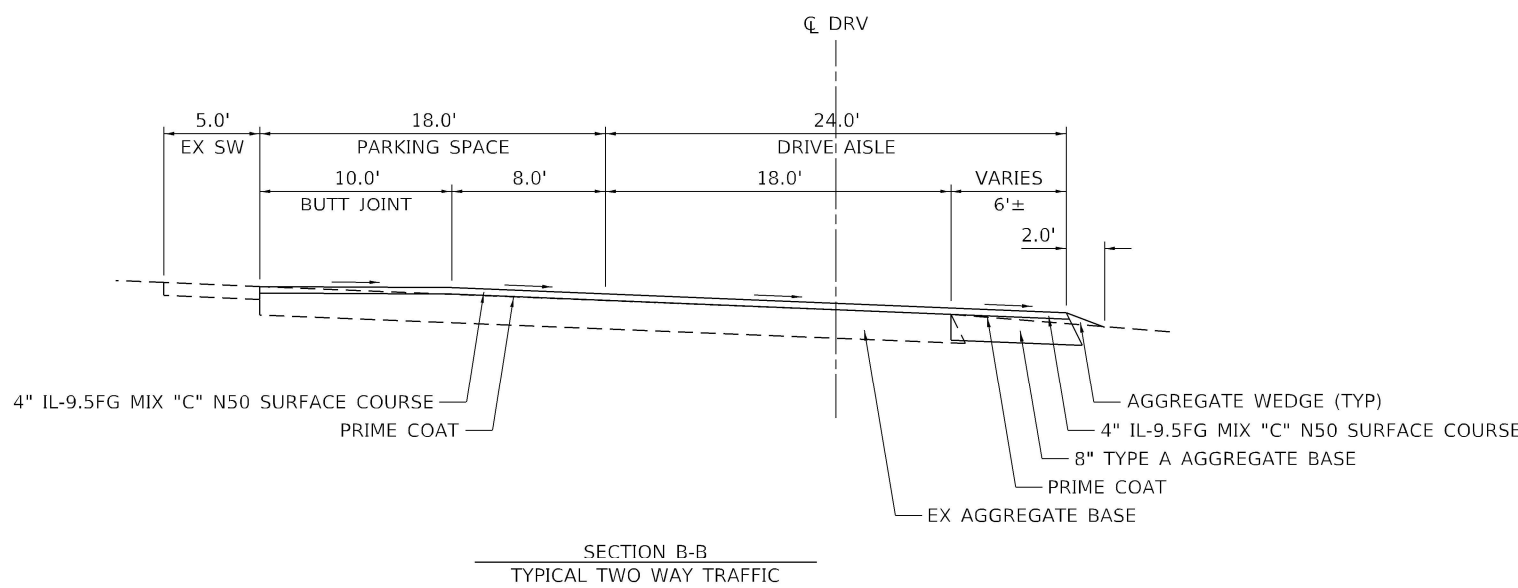
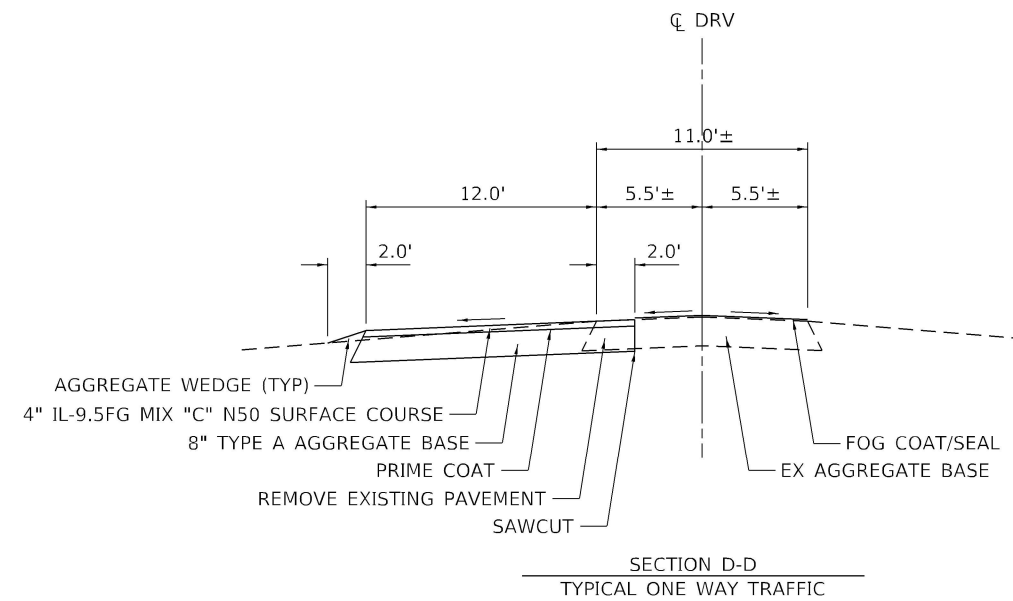
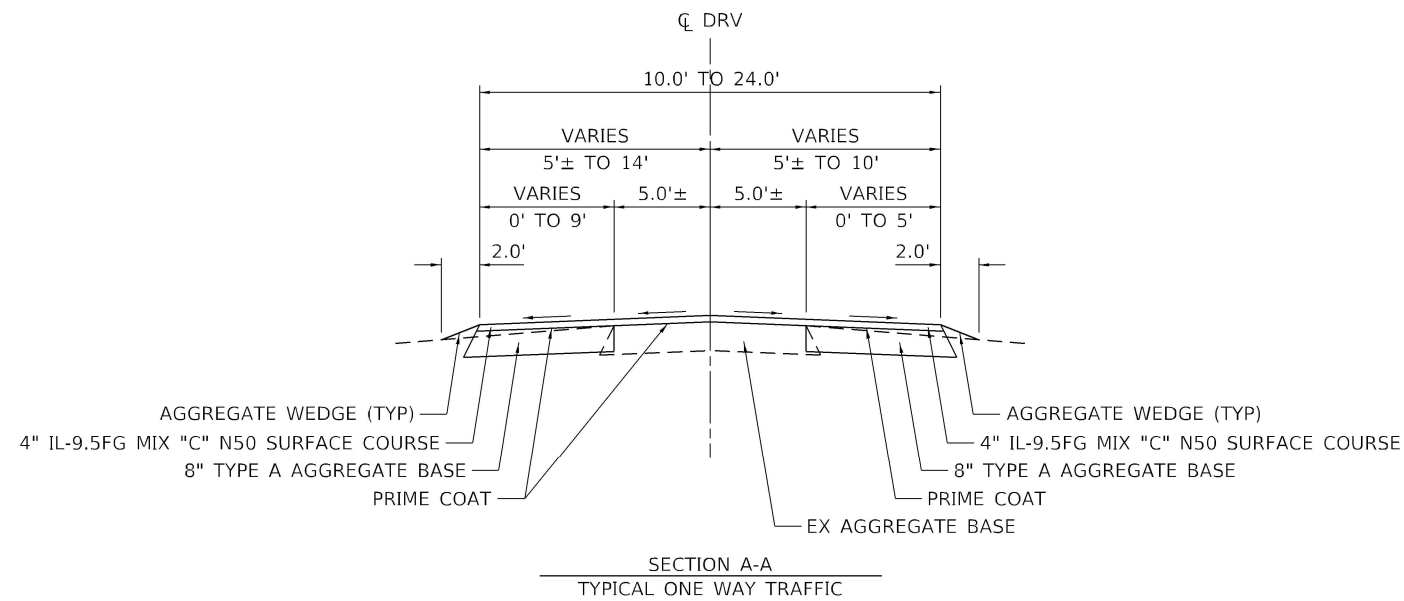
STATE OF ILLINOIS
DEPARTMENT OF TRANSPORTATION

IDNR REGION 5 HEADQUARTERS - ROAD & PARKING IMPROVEMENTS
SUMMARY OF QUANTITIES

SCALE: SHEET OF SHEETS STA. TO STA.

F.A. RTE.	SECTION	COUNTY	TOTAL SHEETS	SHEET NO.
	IDNR R5 PARKING	FRANKLIN	16	3
			CONTRACT NO. 46931	
ILLINOIS FED. AID PROJECT				

REV. - MS



CALCULATION/APPLICATION RATES
 AGGREGATE BASE COURSE, TYPE A 2.0 TONS/CU YD
 TACK COAT 0.05 LB/SQ FT
 PRIME COAT 0.25 LB/SQ FT
 ASPHALT 112 LB/SQ YD/IN

MODEL Default
 FILE NAME: P:\18-1009.13 IDNR Region 5 Headquarters\DDT\CAD_Sheets\18-1009.13_004_Typical.dgn



USER NAME = rjd
 DESIGNED -
 DRAWN -
 CHECKED -
 DATE -
 PLOT SCALE = 10.0000' / in.
 PLOT DATE = 4/1/2022

DESIGNED -
 DRAWN -
 CHECKED -
 DATE -
 REVISED -
 REVISED -
 REVISED -
 REVISED -

**STATE OF ILLINOIS
 DEPARTMENT OF TRANSPORTATION**

**IDNR REGION 5 HEADQUARTERS - ROAD & PARKING IMPROVEMENTS
 TYPICAL SECTIONS**

SCALE: SHEET OF SHEETS STA. TO STA.

F.A. RTE.	SECTION	COUNTY	TOTAL SHEETS	SHEET NO.
	IDNR R5 PARKING	FRANKLIN	16	4
CONTRACT NO. 46931				
ILLINOIS FED. AID PROJECT				

EROSION CONTROL AND SEEDING SCHEDULE

STATION	TREE REMOV 6-15	TREE REMOV OVER 15	TREE TRUNK PROTECTION	SEEDING CL 6	NITROGEN FERT NUTR	PHOSPHORU S FERT NUTR	POTASSIUM FERT NUTR	MULCH METHOD 1	TEMP EROS CONTR SEED	PERIMETER EROS BAR	INLET & PIPE PROTECT
	(UNIT)	(UNIT)	(EACH)	(ACRE)	(POUND)	(POUND)	(POUND)	(ACRE)	(POUND)	(FOOT)	(EACH)
IDNR REGION 5 HEADQUARTERS											
	49	146	27	0.158	15	15	15	0.158	19	825	2
TOTAL	49	146	27	0.16	15	15	15	0.16	19	825	2

EARTHWORK SCHEDULE

STATION	EARTH EXCAVATION	REM & DISP UNS MATL	TOPSOIL F & P VAR DP
	(CU YD)	(CU YD)	(SQ YD)
IDNR REGION 5 HEADQUARTERS			
	280	39	763
TOTAL	280	39	763

PAVEMENT MARKING SCHEDULE

STATION	PT PVT MK LTRS & SYMB	PAINT PVT MK LINE 4	PAINT PVT MK LINE 12
	(SQ FT)	(FOOT)	(FOOT)
IDNR REGION 5 HEADQUARTERS			
	7	532	78
TOTAL	7	532	78

PAVEMENT SCHEDULE

STATION	AGG BASE CSE A	FIBR MOD ASP CRK SEAL	BIT MATLS PR CT	BIT MATLS TACK CT	HMA SURF REM BUTT JT	HMA SC IL- 9.5FG N50	PCC PVT 8	SIDEWALK REM	WELDED WIRE REINF	SAW CUTS	PARK LOT SEAL CT	PART DEPTH PATCH SPL	REINFORCEMEN T BARS
	(TON)	(FOOT)	(POUND)	(POUND)	(SQ YD)	(TON)	(SQ YD)	(SQ FT)	(SQ YD)	(FOOT)	(SQ YD)	(SQ YD)	(POUND)
IDNR REGION 5 HEADQUARTERS													
	197	159	990	1,357	21	437	42	2	40	185	475	5	55
TOTAL	226	159	990	1,357	21	437	42	2	40	185	475	5	55

WHEEL STOPS AND BOLLARDS SCHEDULE

STATION	BOLLARDS	REM EX PARKING BLOCKS	CONC PARKING BLOCKS	BOLLARD REMOVAL
	(EACH)	(EACH)	(EACH)	(EACH)
IDNR REGION 5 HEADQUARTERS				
	3	9	9	1
TOTAL	3	9	9	1

SIGN AND POST SCHEDULE

STATION	OFFSET	TYPE	DESCRIPTION	DIMENSIONS (IN.)		SIGN PANEL T1 (SQ FT)	ENTRANCE SIGN (L SUM)	METAL POST - TYPE A (FOOT)	SIGN REMOVAL (EACH)	COMMENT
				WIDTH	DEPTH					
IDNR REGION 5 HEADQUARTERS										
		R7-8	PARKING RESTRICTIONS	12	18	1.5		13		RESERVED PARKING - NO ARROW
		R7-1101	ILLINOIS \$250 FINE HANDICAP PARKING SIGN	12	6	0.5				
			ENTRANCE SIGN				1		1	ILLINOIS DEPARTMENT OF NATURAL RESOURCES REGION 5 OFFICE
TOTAL						2	1	13	1	

MODEL: Default
FILE NAME: P:\18-1009.13 IDNR Region 5 Headquarters\DDTCAD_Sheets\18-1009.13_005-Schedules.dgn



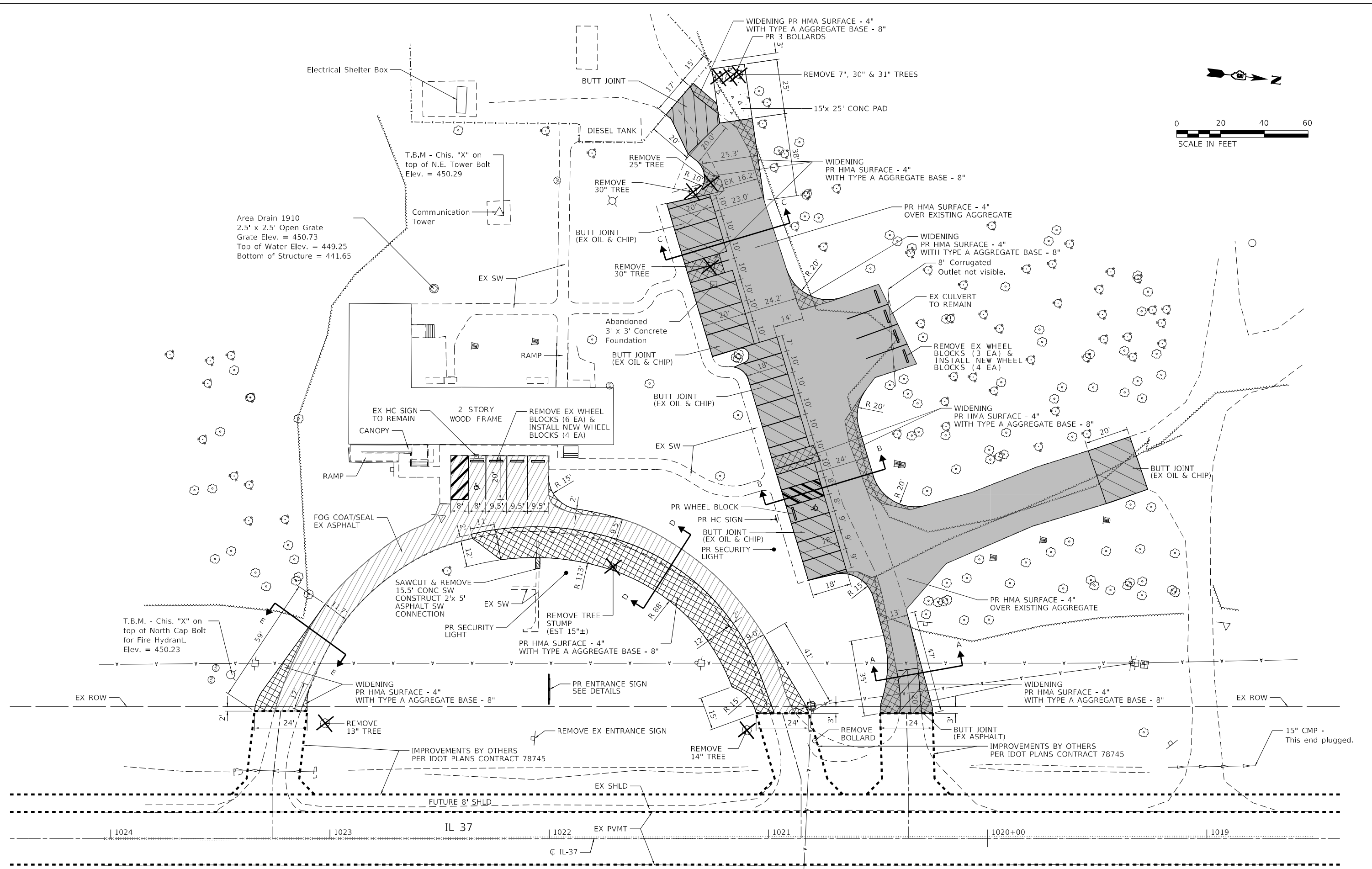
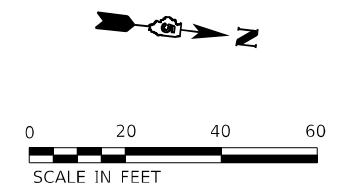
USER NAME = rjd
DESIGNED -
DRAWN -
CHECKED -
DATE -
PLOT SCALE = 2.0000' / in.
PLOT DATE = 2/17/2022

DESIGNED -
DRAWN -
CHECKED -
DATE -
REVISED -
REVISED -
REVISED -
REVISED -

**STATE OF ILLINOIS
DEPARTMENT OF TRANSPORTATION**

**IDNR REGION 5 HEADQUARTERS - ROAD & PARKING IMPROVEMENTS
SCHEDULE OF QUANTITIES**

F.A. RTE.	SECTION	COUNTY	TOTAL SHEETS	SHEET NO.
	IDNR R5 PARKING	FRANKLIN	16	5
			CONTRACT NO. 46931	
SCALE:	SHEET	OF	SHEETS	STA. TO STA.
ILLINOIS FED. AID PROJECT				



MODEL: D:\proj\18-1009_13_IDNR_Region_5_Headquarters\18-1009_13_006.dwg
 FILE: 18-1009_13_IDNR_Region_5_Headquarters\18-1009_13_006.dwg

Kaskaskia
 Engineering Group LLC
 200 E. Main St., Suite 200
 Moline, IL 61704
 309.253.2877
 309.253.2877
 www.kaskaskiaeng.com

USER NAME	JD
PLOT SCALE	1/4" = 40.0000' / 1" = 160.0000'
PLOT DATE	2/17/2022

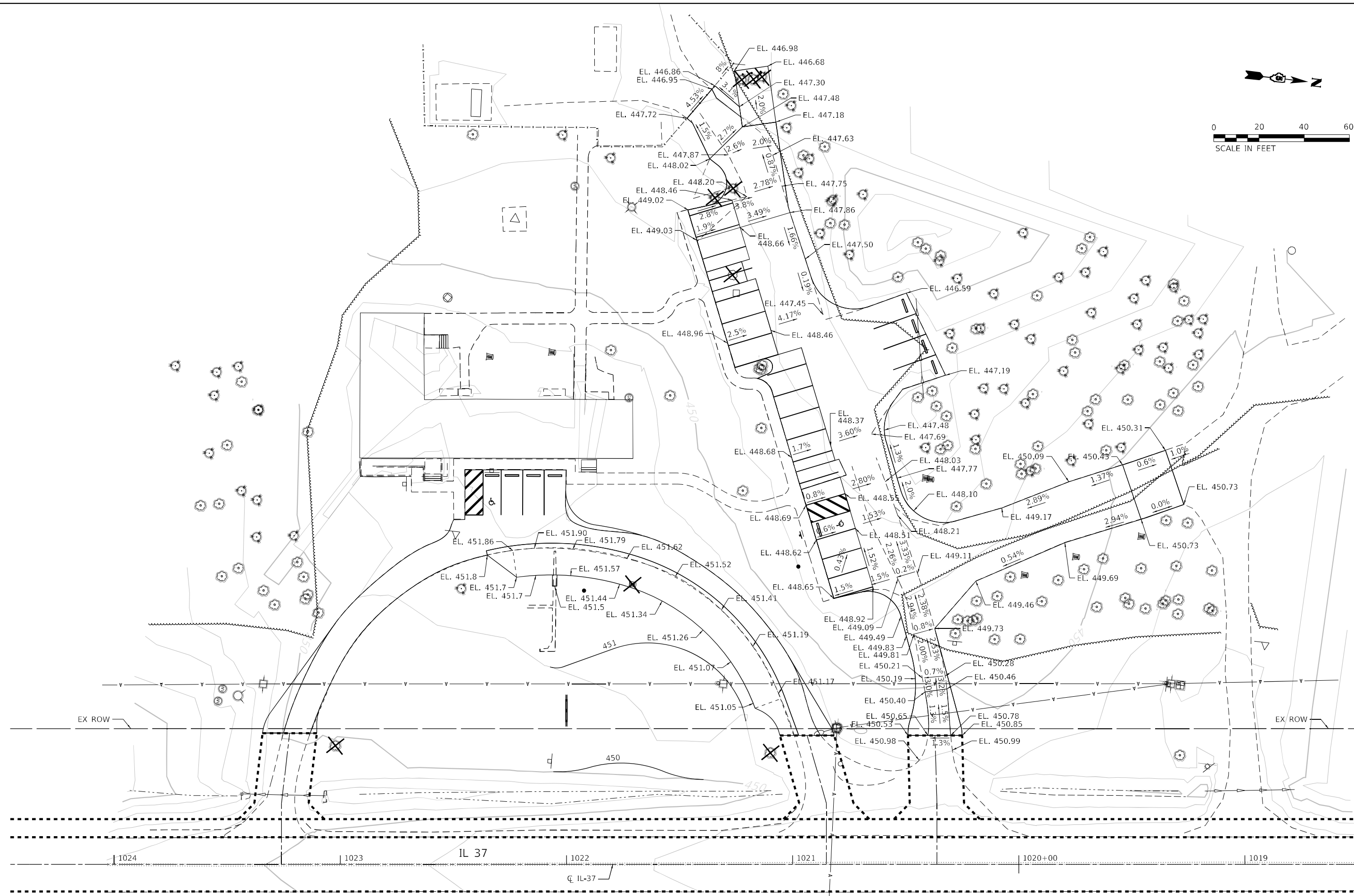
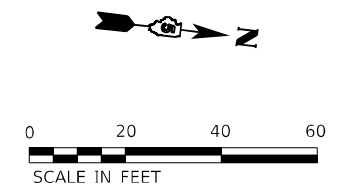
DESIGNED	-	REVISED	-
DRAWN	-	REVISED	-
CHECKED	-	REVISED	-
DATE	-	REVISED	-

STATE OF ILLINOIS
DEPARTMENT OF TRANSPORTATION

IDNR REGION 5 HEADQUARTERS - ROAD & PARKING IMPROVEMENTS
SITE IMPROVEMENTS

SCALE:	SHEET	OF	SHEETS	STA.	TO	STA.
--------	-------	----	--------	------	----	------

F.A. RTE.	SECTION	COUNTY	TOTAL SHEETS	SHEET NO.
	IDNR R5 PARKING	FRANKLIN	16	6
ILLINOIS FED. AID PROJECT			CONTRACT NO. 46931	



MODEL: D:\p1\18-1009_13_IDNR_Region 5_Headquarters\10_IDNR_CAD_Sheets\18-1009_13_007_Grading20.dgn
 FILE: 18-1009_13_IDNR_Region 5_Headquarters\10_IDNR_CAD_Sheets\18-1009_13_007_Grading20.dgn

Kaskaskia
 Engineering Group LLC
 200 E. Main St., Suite 200
 Moline, IL 61704
 309.253.2877
 309.253.2877
 www.kaskaskiaeng.com

USER NAME	JD
PLOT SCALE	40,0000' / in.
PLOT DATE	2/15/2022

DESIGNED	-
DRAWN	-
CHECKED	-
DATE	-

REVISED	-
REVISED	-
REVISED	-
REVISED	-




STATE OF ILLINOIS
DEPARTMENT OF TRANSPORTATION

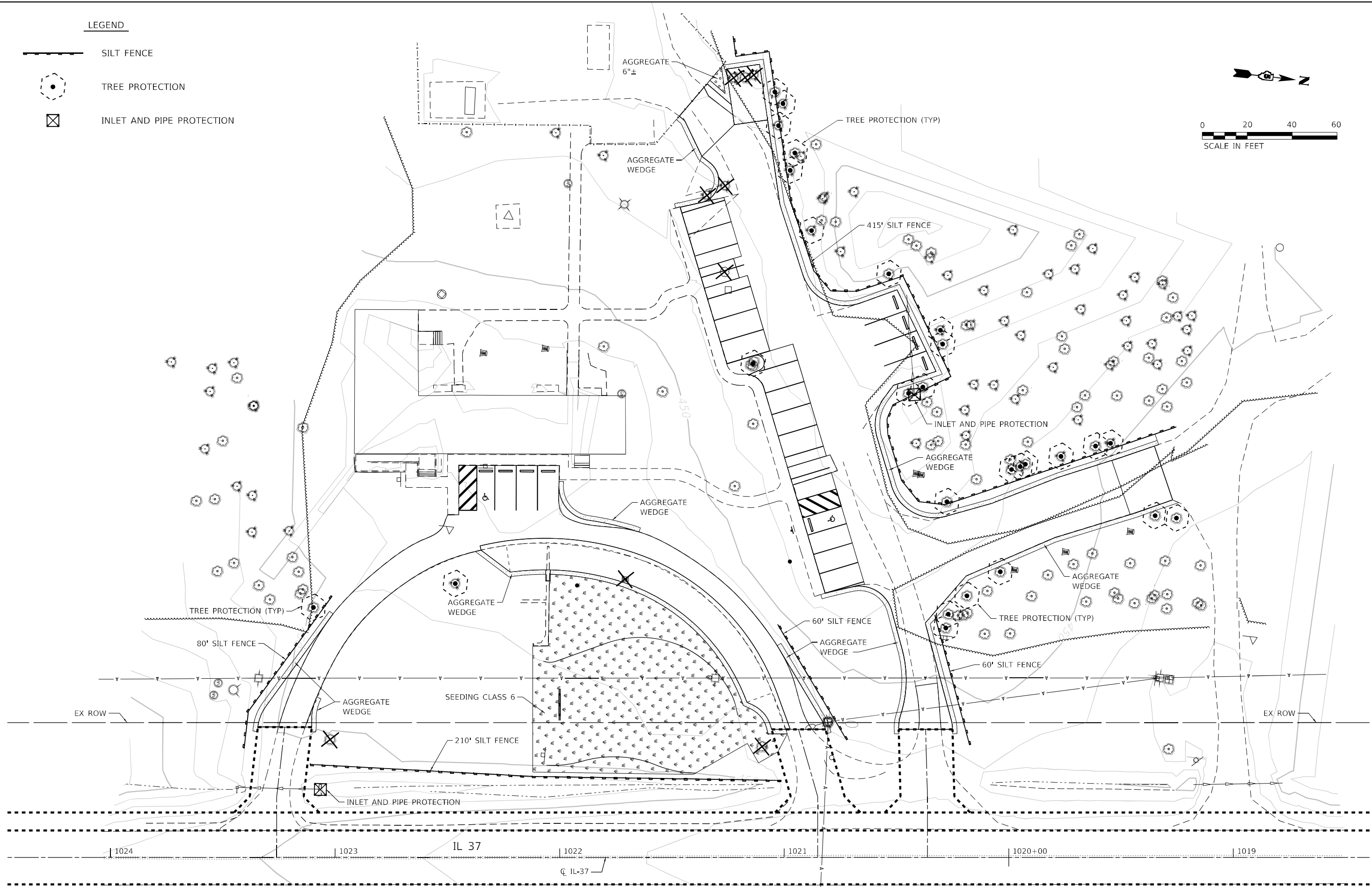
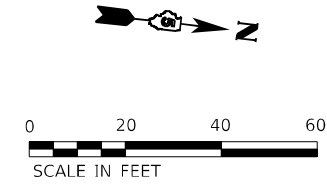
IDNR REGION 5 HEADQUARTERS – ROAD & PARKING IMPROVEMENTS
GRADING PLAN

SCALE:	SHEET	OF	SHEETS	STA.	TO	STA.
--------	-------	----	--------	------	----	------

F.A. RTE.	SECTION	COUNTY	TOTAL SHEETS	SHEET NO.
	IDNR R5 PARKING	FRANKLIN	16	7
			CONTRACT NO. 46931	
		ILLINOIS	FED. AID PROJECT	

LEGEND

-  SILT FENCE
-  TREE PROTECTION
-  INLET AND PIPE PROTECTION



MODEL: D:\p1\18-1009_13_IDMR_Region 5_Headquarters\10_IDOT\CAD_Sheets\18-1009_13_008_Eros20.dwg
 FILE: 18-1009_13_IDMR_Region 5_Headquarters\10_IDOT\CAD_Sheets\18-1009_13_008_Eros20.dwg

Kaskaskia
 Engineering Group, LLC
 200 E. Main St., Suite 200
 Moline, IL 61704
 309.253.2877
 309.253.2877
 www.kaskaskiaeng.com

USER NAME	afj
PLOT SCALE	40,0000 * / in.
PLOT DATE	2/15/2022

DESIGNED	-
DRAWN	-
CHECKED	-
DATE	-

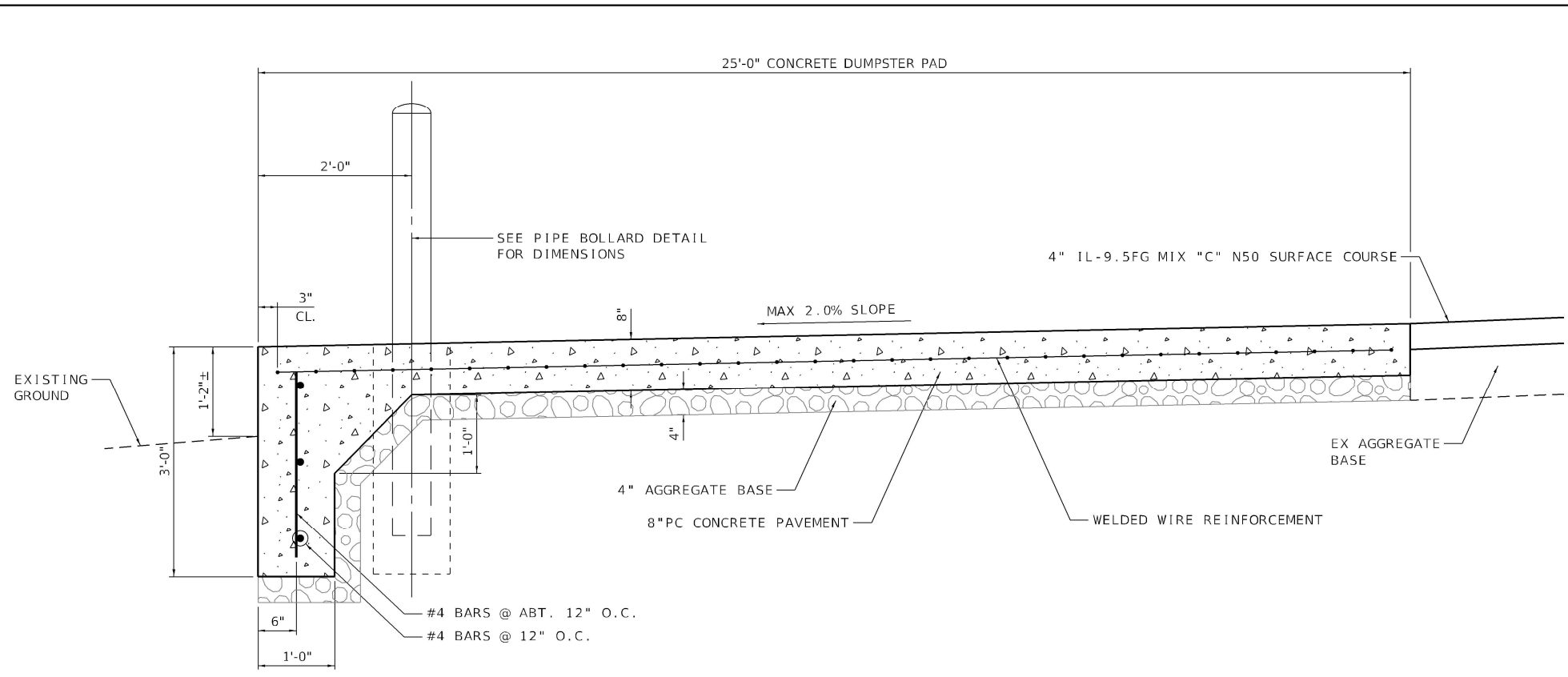
REVISED	-
REVISED	-
REVISED	-
REVISED	-

STATE OF ILLINOIS
DEPARTMENT OF TRANSPORTATION

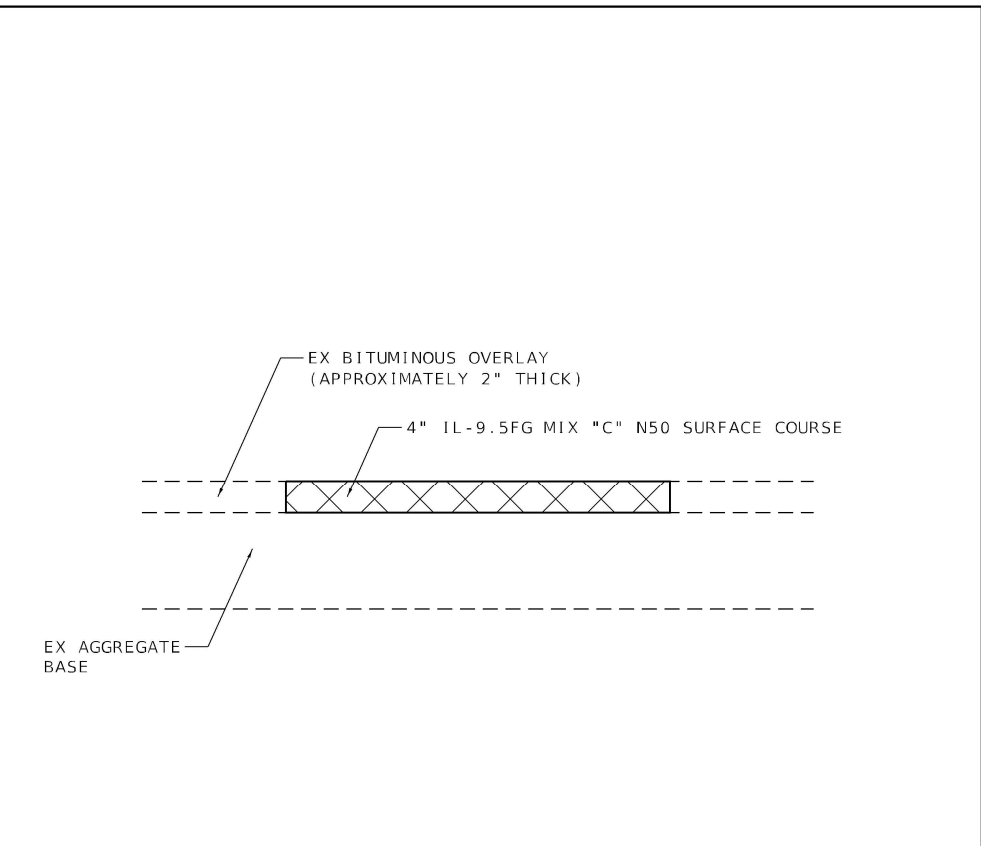
IDNR REGION 5 HEADQUARTERS – ROAD & PARKING IMPROVEMENTS
EROSION CONTROL PLAN

SCALE: SHEET OF SHEETS STA. TO STA.

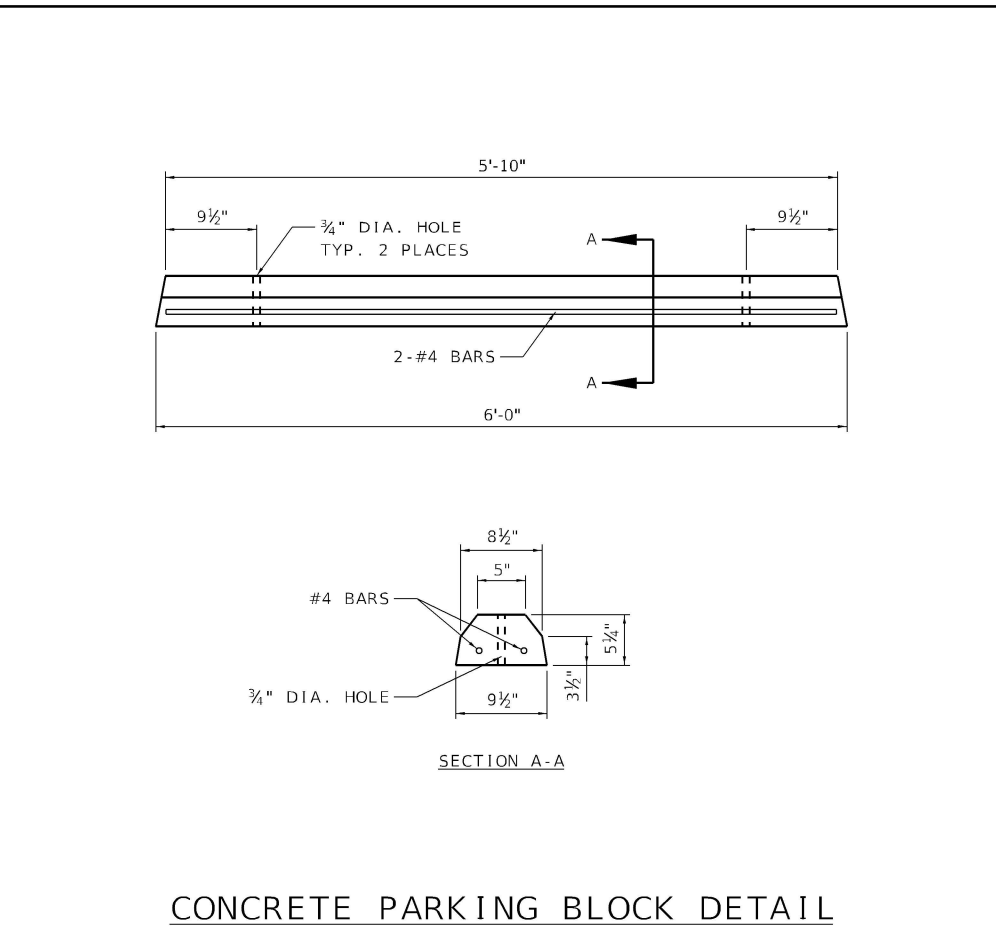
F.A. RTE.	SECTION	COUNTY	TOTAL SHEETS	SHEET NO.
	IDNR R5 PARKING	FRANKLIN	16	8
			CONTRACT NO. 46931	
		ILLINOIS	FED. AID PROJECT	



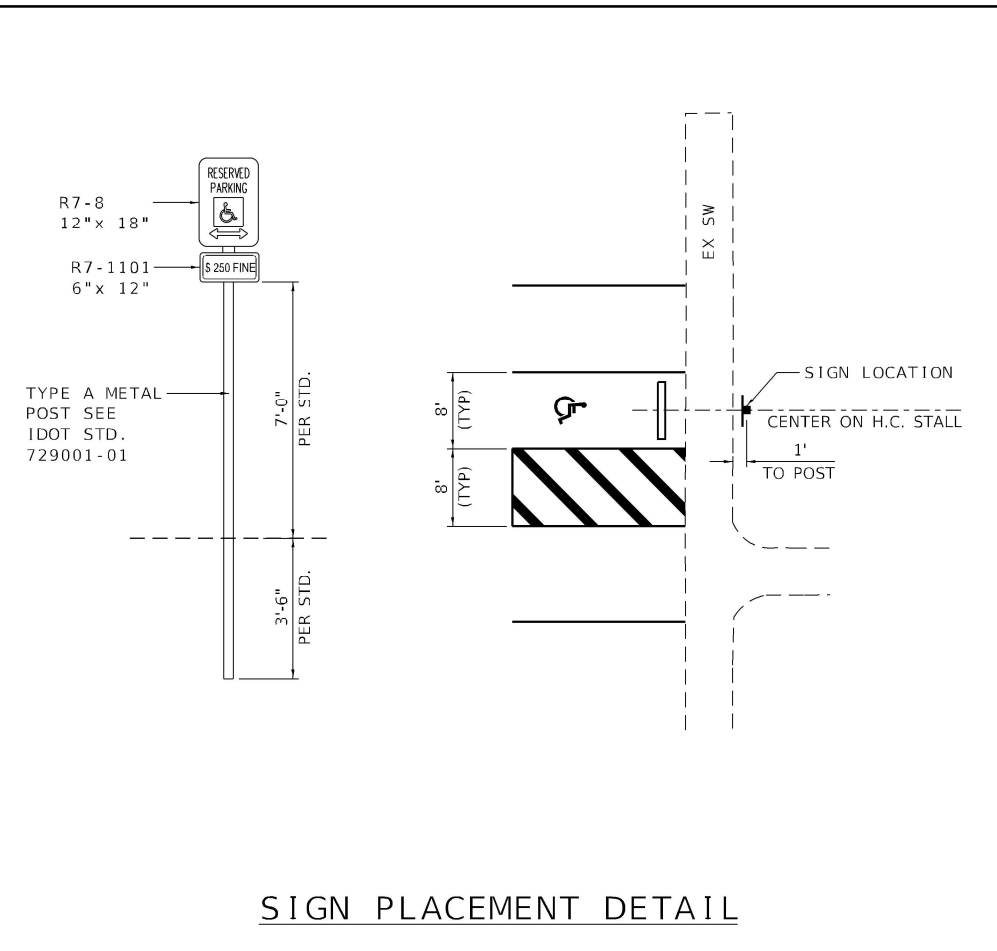
8" CONCRETE DUMPSTER PAD



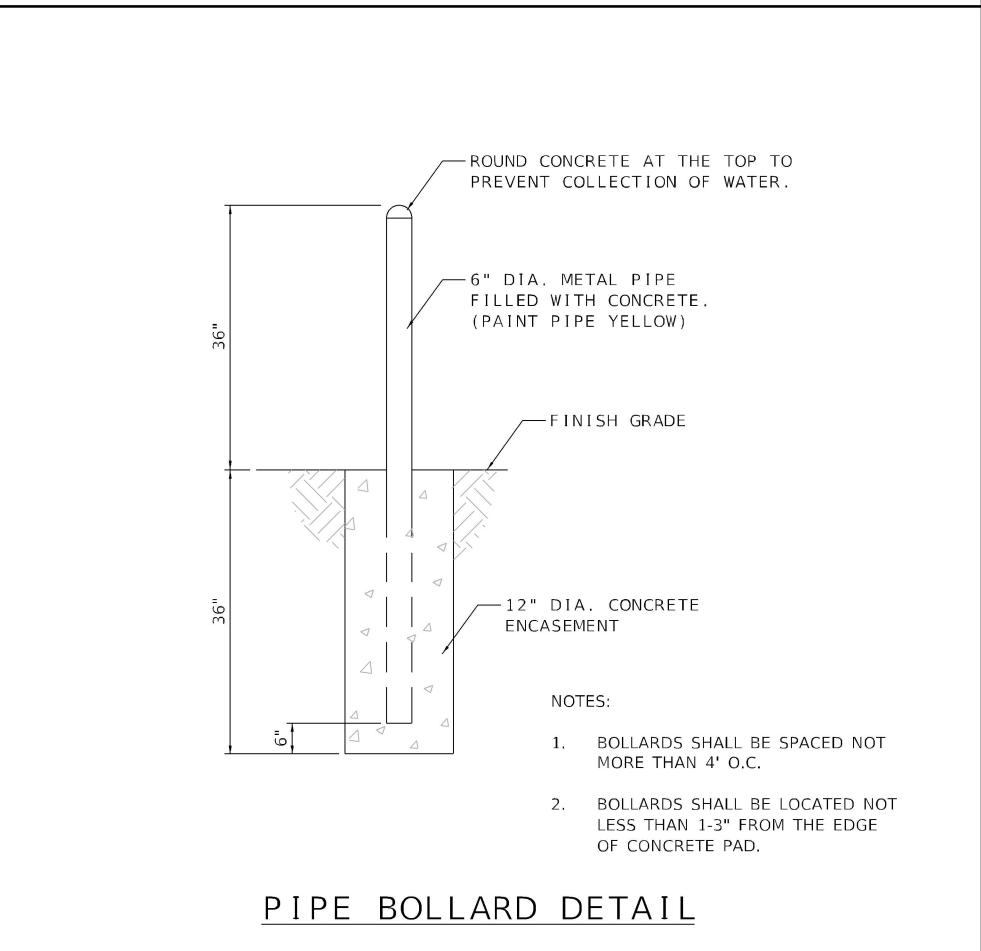
PATCHING DETAIL



CONCRETE PARKING BLOCK DETAIL



SIGN PLACEMENT DETAIL



PIPE BOLLARD DETAIL

- NOTES:
- BOLLARDS SHALL BE SPACED NOT MORE THAN 4' O.C.
 - BOLLARDS SHALL BE LOCATED NOT LESS THAN 1-3" FROM THE EDGE OF CONCRETE PAD.

MODEL: Default
 FILE NAME: P:\18-1009.13 IDNR Region 5 Headquarters\DDTCAD_Sheets\18-1009.13_009_Details.dgn



USER NAME = rjd
 DESIGNED -
 DRAWN -
 PLOT SCALE = 2.0000' / in.
 CHECKED -
 DATE -
 PLOT DATE = 4/1/2022

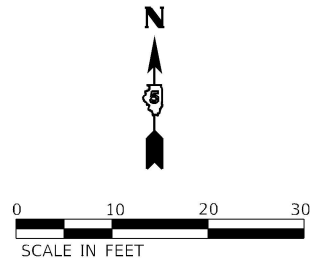
DESIGNED -
 DRAWN -
 CHECKED -
 DATE -

REVISED -
 REVISED -
 REVISED -
 REVISED -

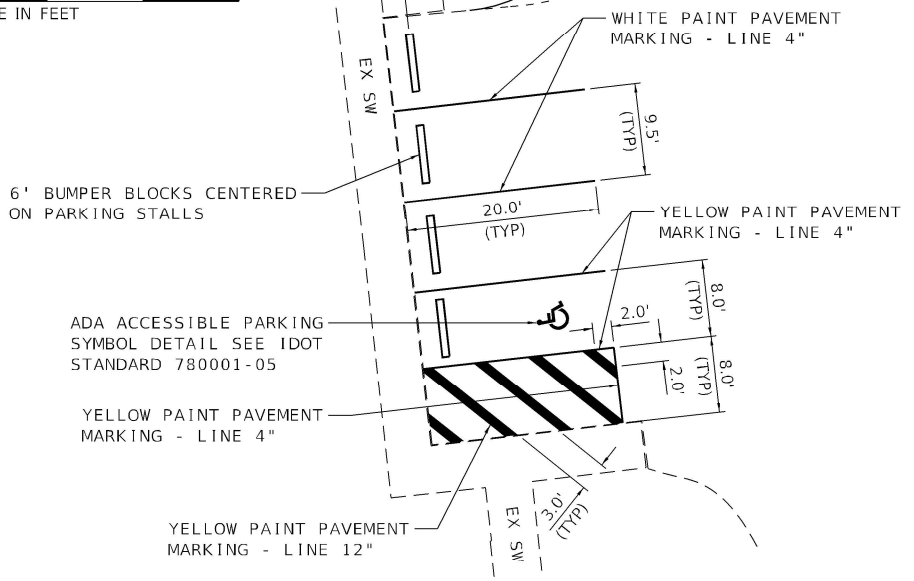
STATE OF ILLINOIS
 DEPARTMENT OF TRANSPORTATION

IDNR REGION 5 HEADQUARTERS - ROAD & PARKING IMPROVEMENTS
 DETAILS
 SCALE: SHEET OF SHEETS STA. TO STA.

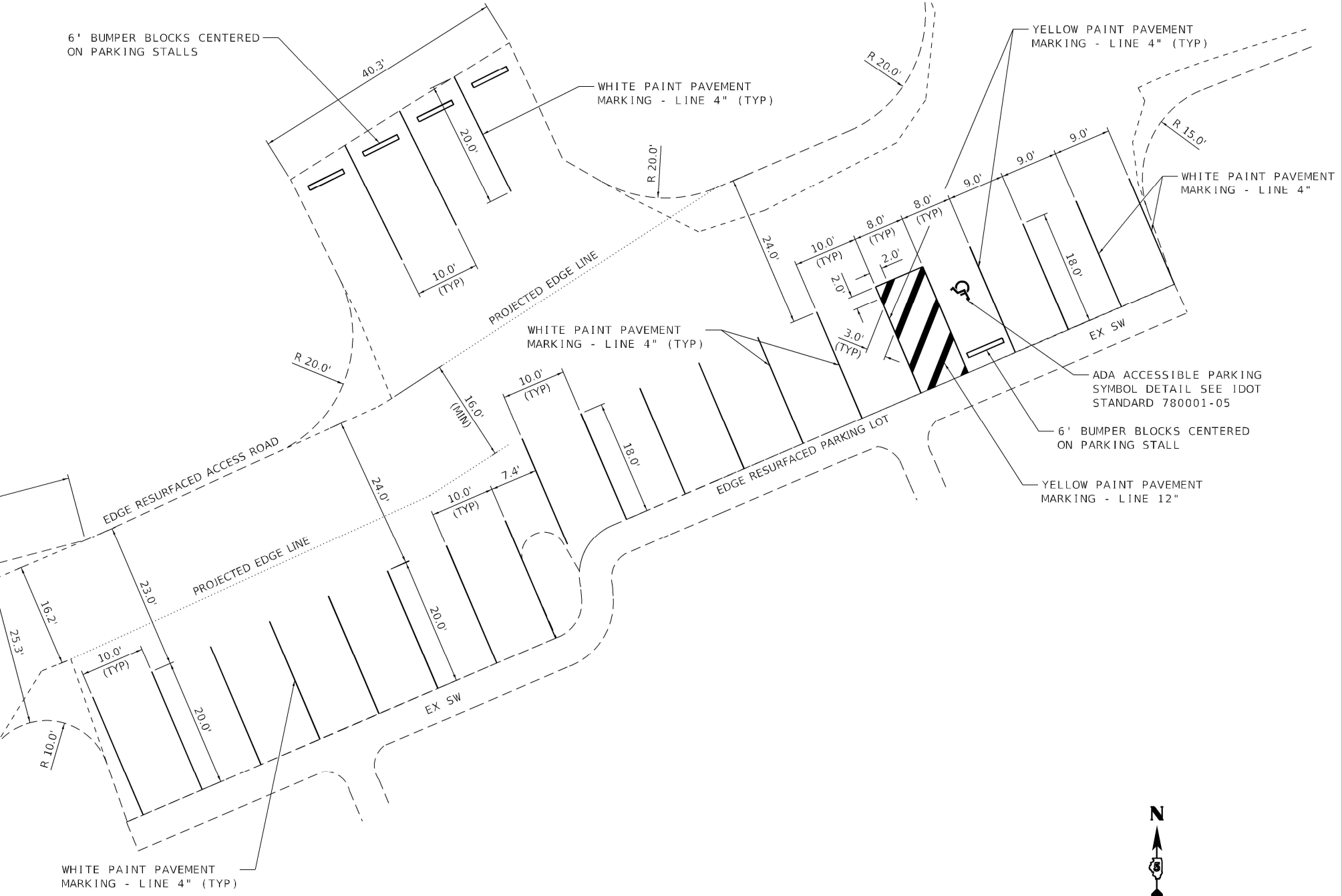
F.A. RTE.	SECTION	COUNTY	TOTAL SHEETS	SHEET NO.
	IDNR R5 PARKING	FRANKLIN	16	9
CONTRACT NO. 46931				
ILLINOIS FED. AID PROJECT				



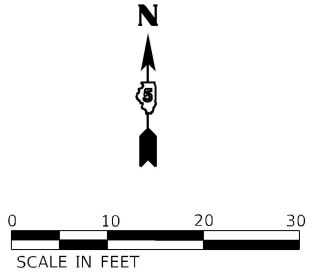
LOOP ROAD PARKING STRIPING DETAIL



6' BUMPER BLOCKS CENTERED ON PARKING STALLS



DUMPSTER PAD & PARKING LOT STRIPING DETAIL



MODEL: Default FILE NAME: P:\18-1009\13 IDNR Region 5 Headquarters\DOT\CAD_Sheets\18-1009_13_010_PMK_Details.dgn

Kaskaskia
Engineering Group LLC
Professional Engineering Firm
18700 W. 117th S.
Liberal, MO 64019
314-635-3877
www.kaskaskiaeng.com

USER NAME = rjd	DESIGNED -	REVISED -
PLOT SCALE = 2.0000' / in.	DRAWN -	REVISED -
PLOT DATE = 2/15/2022	CHECKED -	REVISED -
	DATE -	REVISED -

**STATE OF ILLINOIS
DEPARTMENT OF TRANSPORTATION**

**IDNR REGION 5 HEADQUARTERS - ROAD & PARKING IMPROVEMENTS
PAVEMENT MARKING DETAILS**

F.A. RTE.	SECTION	COUNTY	TOTAL SHEETS	SHEET NO.
	IDNR R5 PARKING	FRANKLIN	16	10
CONTRACT NO. 46931				
ILLINOIS FED. AID PROJECT				

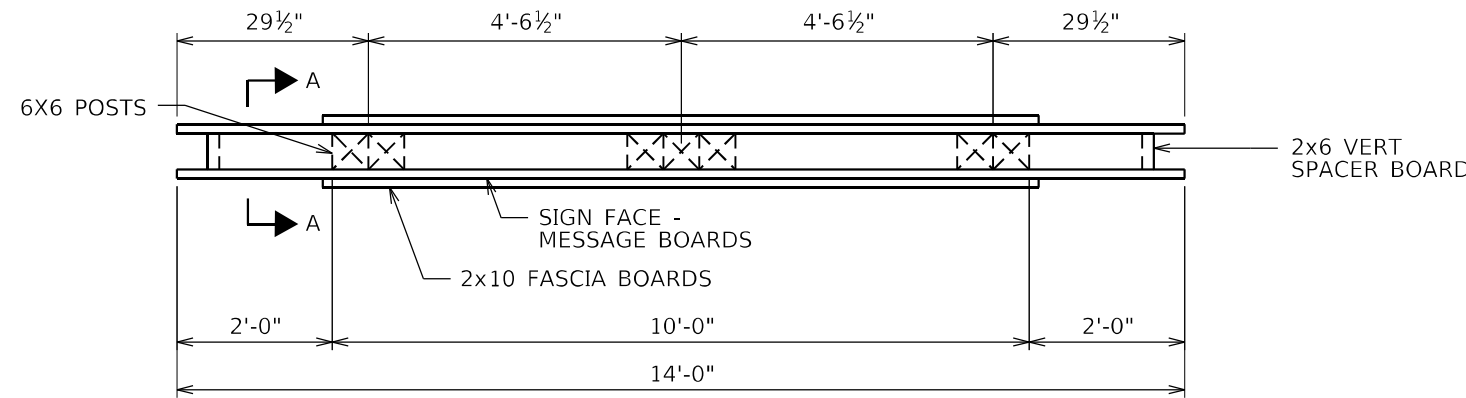
SCALE: SHEET OF SHEETS STA. TO STA.

**FIBERGLASS REINFORCED RECYCLED PLASTIC LUMBER MATERIALS LIST:
ALL ITEMS TO BE BROWN IN COLOR**

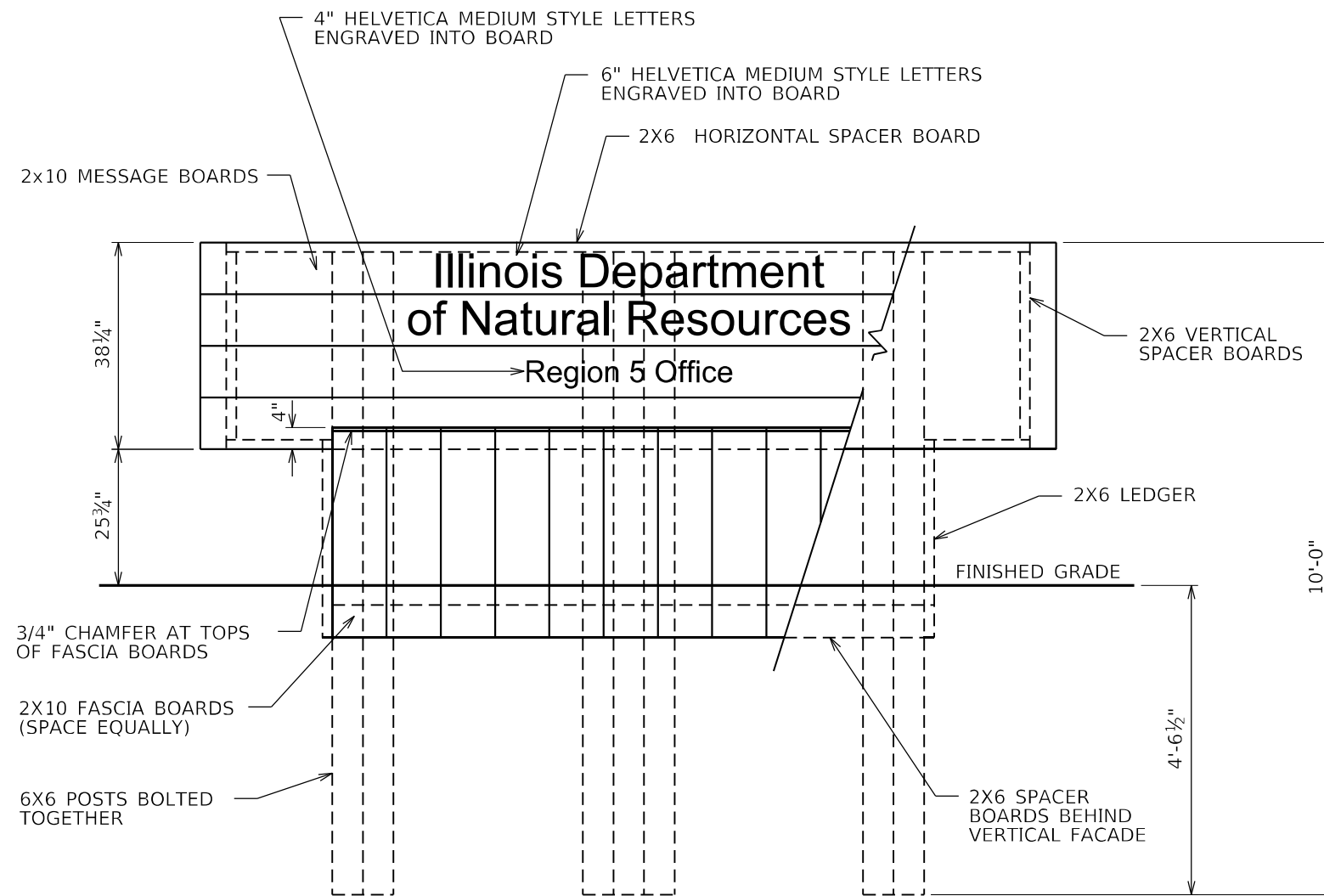
ITEM	LENGTH	QUAN.	REMARKS
6X6 POST	10'-0"	7 EA.	10'-0"
2X6 SPACER AND LEDGER BOARD	14'-0"	4 EA.	CUT VARIOUS LENGTHS TO FIT
2X10 MESSAGE BOARD	14'-0"	8 EA.	14'-0"
2X10 BOTTOM FASCIA BOARDS	3'-4"	28 EA.	SEE DETAIL VIEW - CHAMFER TOP OF BOARD

GENERAL NOTES:

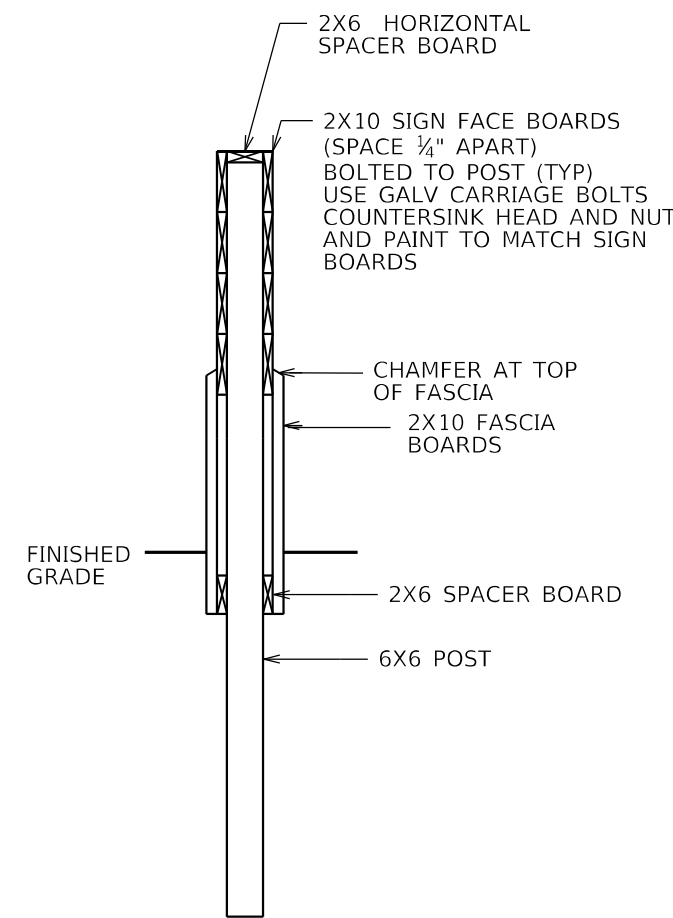
1. ALL LUMBER IS FIBERGLASS REINFORCED RECYCLED PLASTIC, BROWN IN COLOR WITH A WHITE CORE. SUBMIT SAMPLES TO IDNR LANDSCAPE ARCHITECT FOR COLOR SELECTION PRIOR TO FABRICATION.
2. ALL LETTERING IS TO BE HELVETICA MEDIUM W/UPPER AND LOWER CASE LETTERS. LETTERS ARE TO BE ENGRAVED WITH A COMPUTER OR TEMPLATE DRIVER ROUTER SYSTEM.



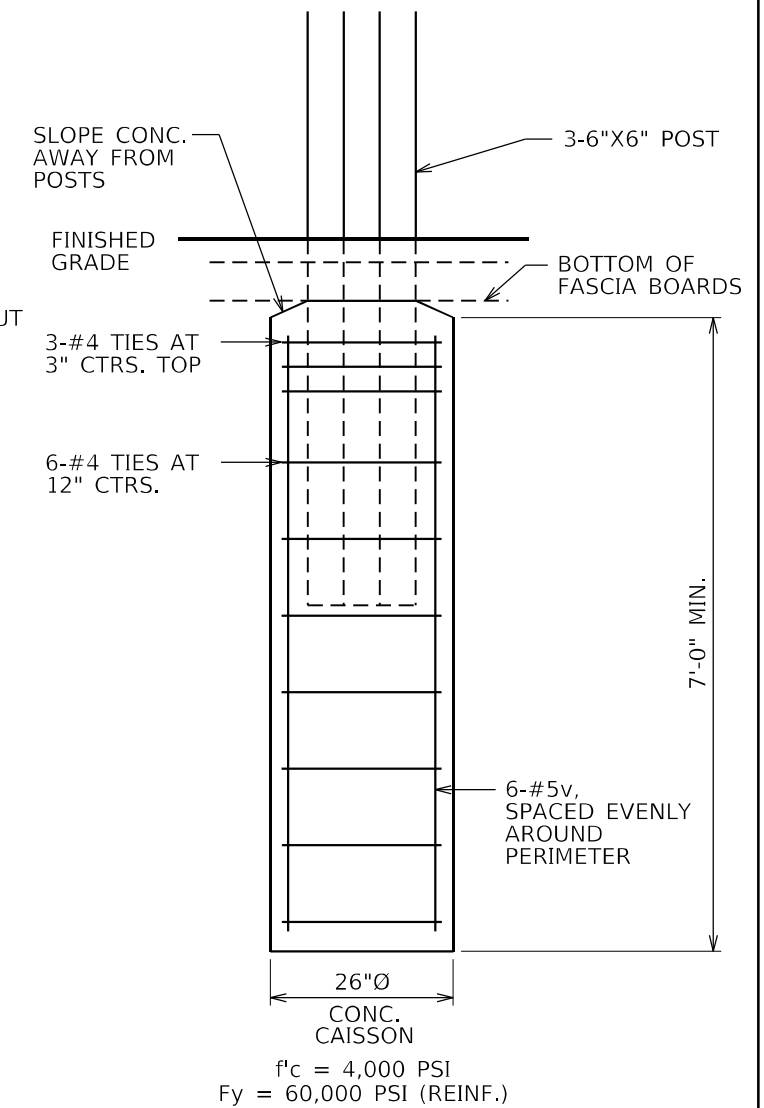
TOP VIEW



E1 FRONT VIEW (LETTERING IS REPEATED ON OPPOSITE SIDE)



SECTION A-A



SECTION THRU FOUNDATION

MODEL: Default
FILE NAME: P:\18-1009_13_IDNR_Region 5 Headquarters\10_IDOT\CAD_Sheets\18-1009_13_011_Sign_Details.dwg

USER NAME = rjo	DESIGNED -	REVISED -
PLOT SCALE = 2,000' / in.	DRAWN -	REVISED -
PLOT DATE = 2/15/2022	CHECKED -	REVISED -
	DATE -	REVISED -

**STATE OF ILLINOIS
DEPARTMENT OF TRANSPORTATION**

**IDNR REGION 5 HEADQUARTERS - ROAD & PARKING IMPROVEMENTS
ENTRANCE SIGN DETAILS**

SCALE: SHEET OF SHEETS STA. TO STA.

F.A. RTE.	SECTION	COUNTY	TOTAL SHEETS	SHEET NO.
	IDNR R5 PARKING	FRANKLIN	16	11
CONTRACT NO. 46931				
ILLINOIS FED. AID PROJECT				

ELECTRICAL GENERAL NOTES

1. PROVIDE ALL LABOR, MATERIALS, AND EQUIPMENT TO FURNISH AND INSTALL THE ELECTRICAL WORK AS SHOWN ON THE PLANS, AS DETAILED IN THE SPECIFICATIONS, AS REQUIRED BY THE NATIONAL ELECTRICAL CODE AND AS REQUIRED FOR SPECIFIED OPERATION. CONTRACTOR SHALL EMPLOY ONLY EXPERIENCED ELECTRICIANS. A DULY LICENSED ELECTRICIAN SHALL SUPERVISE ALL WORK. CONTRACTOR SHALL ENSURE THAT ALL EMPLOYEES ARE FAMILIAR WITH THE TYPE OF WORK ENCOUNTERED ON THE PROJECT. ALL MATERIALS AND EQUIPMENT PROVIDED, WHERE APPLICABLE, SHALL HAVE A UL OR FM "LISTING MARK" AFFIXED TO THEM OR THEIR PACKING CONTAINERS AND THEY SHALL MEET ALL UL OR FM AND NEC (NATIONAL ELECTRICAL CODE) STANDARDS FOR THEIR INDICATED USE.

2. WHEREVER THE TERM "STANDARD SPECIFICATIONS" IS USED, IT SHALL MEAN "STANDARD SPECIFICATIONS FOR ROAD AND BRIDGE CONSTRUCTION, 2022 EDITION BY THE ILLINOIS DEPARTMENT OF TRANSPORTATION."

3. FIELD LOCATING OF UTILITIES:

UTILITY LOCATIONS SHOWN ON THE DRAWINGS ARE FROM AS-BUILT RECORDS AND MAY OR MAY NOT BE ACCURATE OR COMPLETE. THE CONTRACTOR SHALL VERIFY THE LOCATION OF ALL EXISTING UTILITIES BEFORE BEGINNING CONSTRUCTION AND SHALL PROTECT ALL UTILITY FACILITIES FROM DAMAGE AND DISRUPTION. THE CONTRACTOR SHALL REPAIR AND RESTORE ANY UTILITIES DAMAGED OR DISRUPTED DURING CONSTRUCTION OPERATIONS TO THE SATISFACTION OF THE UTILITY OWNER AT CONTRACTOR'S OWN EXPENSE.

PRIOR TO HORIZONTAL DIRECTIONAL DRILLING ACTIVITIES, THE CONTRACTOR SHALL PHYSICALLY LOCATE ALL UTILITIES IN THE AFFECTED AREA, REGARDLESS OF THE OWNERSHIP OF THE UTILITY. JULIE LOCATING ALONE IS NOT SUFFICIENT. METHODS THE CONTRACTOR SHALL USE INCLUDE HAND DIGGING, VACUUM POTHOLING, PROBING, ELECTRONIC LOCATING USING CONTRACTOR'S OWN EQUIPMENT, VISUAL SURVEY OF NEARBY FACILITIES (MANHOLES, INLETS, STREET BOXES, HYDRANTS AND THE LIKE), IN SHORT: ANY METHOD DEEMED BY THE CONTRACTOR TO BE SUFFICIENT TO PREVENT ANY DAMAGE OR DISRUPTION TO EXISTING UTILITIES. FIELD LOCATING OF UTILITIES SHALL BE INCLUDED WITH THE ASSOCIATED PAY ITEM.

4. DETERMINING HANDHOLE LOCATIONS.

THE CONTRACTOR SHALL LOCATE ALL UNDERGROUND UTILITIES AT HANDHOLE LOCATIONS, ACCORDING TO GENERAL NOTE 3. AFTER UTILITIES HAVE BEEN LOCATED, DETERMINE POSSIBLE LOCATIONS THAT WILL PLACE HANDHOLE AS CLOSE TO THE PLAN LOCATION AS POSSIBLE. CONFIRM HANDHOLE PLACEMENTS WITH THE OWNER IN THE FIELD PRIOR TO INSTALLATION. HANDHOLES SHALL BE INSTALLED IN UNPAVED (GRASS) AREAS UNLESS THERE IS NO OTHER OPTION. IN SUCH CASES, UPON APPROVAL BY THE OWNER, INSTALL HANDHOLE IN THE PAVING, PAVING REMOVAL AND REPLACEMENT PAID FOR AT THE ASSOCIATED PAY ITEM UNIT COST. DETERMINING HANDHOLE LOCATIONS SHALL BE INCLUDED WITH THE ASSOCIATED PAY ITEM.

5. DETERMINING UNDERGROUND RACEWAY LOCATIONS

RACEWAY LOCATIONS SHOWN IN THE PLANS ARE DIAGRAMMATIC IN NATURE AND SHALL BE VARIED AS NEEDED TO SUIT FIELD CONDITIONS ENCOUNTERED. LOCATE ALL UNDERGROUND UTILITIES ACCORDING TO GENERAL NOTE 3 ALONG THE ROUTE OF THE UNDERGROUND RACEWAY PRIOR TO INSTALLATION. AFTER UTILITIES HAVE BEEN LOCATED, DETERMINE POSSIBLE ROUTES THAT WILL PLACE RACEWAYS AS CLOSE TO THE PLAN LOCATION AS POSSIBLE. CONFIRM RACEWAY ROUTES WITH THE OWNER IN THE FIELD PRIOR TO INSTALLATION. DETERMINING UNDERGROUND RACEWAY LOCATIONS SHALL BE INCLUDED WITH THE ASSOCIATED PAY ITEM.

6. REPAIR OF DAMAGE.

PROVIDE REPAIRS TO ANY PUBLIC OR PRIVATE PROPERTY, INCLUDING UTILITIES WHICH ARE DAMAGED OR DISTURBED BY CONSTRUCTION OPERATIONS. REPAIRS SHALL BE PROVIDED AT CONTRACTOR'S OWN EXPENSE. WHERE UTILITY LINES, UNDERGROUND OBSTRUCTIONS OR PIPING MAY BE UNCOVERED BY CONSTRUCTION ACTIVITIES THE CONTRACTOR SHALL NOTIFY THE OWNER OF THE UTILITY AND TAKE ALL NECESSARY MEASURES TO PREVENT INTERRUPTION OF SERVICES THAT MAY BE DAMAGED OR INTERRUPTED THROUGH CONTRACTOR'S OPERATIONS AND PROVIDE IMMEDIATE REPAIR AND/OR RESTORATION AT THE CONTRACTOR'S OWN EXPENSE.

7. UNDERGROUND CONDUIT SHALL BE 1/4" SCHEDULE 80 HDPE UNLESS NOTED OTHERWISE AND INSTALLED AT A MINIMUM DEPTH OF 24". EXCAVATIONS SHALL BE BACKFILLED WITH COMPACTED TRENCH BACKFILL. TRENCH BACKFILL SHALL BE ACCORDING TO THE STANDARD SPECIFICATIONS. BACKFILL WILL BE INCLUDED IN THE ASSOCIATED PAY ITEM AND NOT COUNTED SEPARATELY.

8. ALL UNDERGROUND CIRCUIT WIRING SHALL BE XLP-USE STRANDED COPPER ACCORDING TO STANDARD SPECIFICATION 1066.03. CABLE INSULATION SHALL BE SOLID COLOR-CODED RED, BLUE, WHITE OR GREEN ACCORDING TO USE. COLOR TAPE ON BLACK COLOR INSULATION IS NOT ALLOWED.

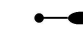


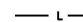



9. CONDUCTORS AT ALL TERMINATIONS AND IN JUNCTION BOXES AND HANDHOLES SHALL BE MARKED TO INDICATE SOURCE PANEL, CIRCUIT NUMBER AND BRANCH LETTER. WIRING MARKERS SHALL BE CLIP-ON STYLE ACCORDING TO STANDARD SPECIFICATION 1066.07 (b). BUNDLE CONDUCTORS OF THE SAME BRANCH WITH WIRE TIES IN ALL JUNCTION BOXES AND HANDHOLES.

10. CONDUCTOR SPLICES SHALL BE COMPRESSION TYPE ACCORDING TO STANDARD SPECIFICATION 1066.06(C)(2) WITH WATERPROOF HEAT SHRINK COVER. SPLICES SHALL BE MADE WATERPROOF WITH HEAT SHRINK CAPPED SPLICE ACCORDING TO STANDARD SPECIFICATION 1066.06 (b).

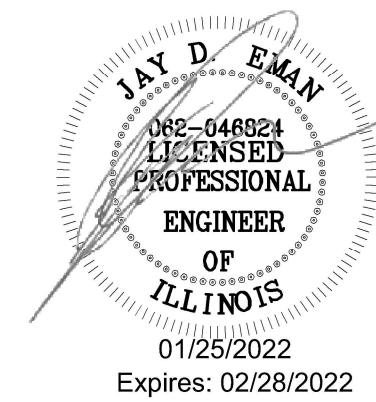
11. INSTALL LIGHT POLES PLUMB AND TRUE. HANDLE LIGHTING FIXTURES CAREFULLY TO PREVENT BREAKAGE, AND DAMAGE. DO NOT INSTALL DAMAGED LIGHTING FIXTURES. REPLACE AND RETURN DAMAGED UNITS TO EQUIPMENT MANUFACTURER.

12. PROVIDE 2" RIGID GALVANIZED STEEL FOR ALL ABOVE GROUND EXPOSED CONDUIT. TRANSITION BELOW GRADE TO NONMETALLIC CONDUIT. STEEL CONDUIT SHALL NOT BE COUNTED SEPARATELY FOR PAYMENT AND INCLUDED WITH THE ASSOCIATED PAY ITEM.

ELECTRICAL LEGEND

-  PROPOSED LIGHTING ASSEMBLY
-  EXISTING LIGHT
-  PROPOSED LED FLOOD LIGHT
-  PROPOSED UNDERGROUND CONDUIT AND CONDUCTOR (1/2" PVC WITH 2-#8, 1-#8G)
-  PROPOSED HANDHOLE, COMPOSITE CONCRETE
-  PROPOSED LIGHTING CONTROLLER, SPECIAL
-  PROPOSED JUNCTION BOX, ATTACHED TO STRUCTURE

TOTAL BILL OF MATERIALS			
PAY CODE	DESCRIPTION	UNIT	TOTAL QUANTITY
81028730	UNDERGROUND CONDUIT, COILABLE NONMETALLIC CONDUIT, 1-1/4" DIA.	FOOT	339
81300320	JUNCTION BOX, STAINLESS STEEL, ATTACHED TO STRUCTURE 8"X8"X6"	EACH	1
81400730	HANDHOLE, COMPOSITE CONCRETE	EACH	2
81702110	ELECTRIC CABLE IN CONDUIT, 600V (XLP-TYPE USE), 1/C NO. 10	FOOT	1,197
83600200	LIGHT POLE FOUNDATION, 24" DIAMETER	FOOT	12
X0324390	FLOOD LIGHTING UNIT	EACH	5
X0325815	REMOVE EXISTING CABLE	FOOT	420
X1400443	MODIFY CIRCUIT BREAKER PANEL (SPECIAL)	EACH	1
X8250500	LIGHTING UNIT COMPLETE, SPECIAL	EACH	2
X8250505	LIGHTING CONTROLLER, SPECIAL	EACH	1



PEN TABLE: IDOTSSA_Standard Project Pen.tbl
 DRIVER: 2211 BRADLEY AVENUE
 SHEET: CHAMPAIGN, ILLINOIS 61821
 FILE: J:\2019\05\18\17\21 - BDT 1\B-C-13 Region 5 Office Parking Lot04 - Drawings\DCM\CAD_Sheets\0546931_01_Electric_Notes_BOM_Layout.dgn



USER NAME = sllsenby	DESIGNED - DAR	REVISED
PLOT SCALE = 2,000' / in.	DRAWN - SRL	REVISED
PLOT DATE = 1/24/2022 4:02:56 PM	CHECKED - JDE	REVISED
	DATE - 01/28/2022	REVISED

STATE OF ILLINOIS
DEPARTMENT OF TRANSPORTATION

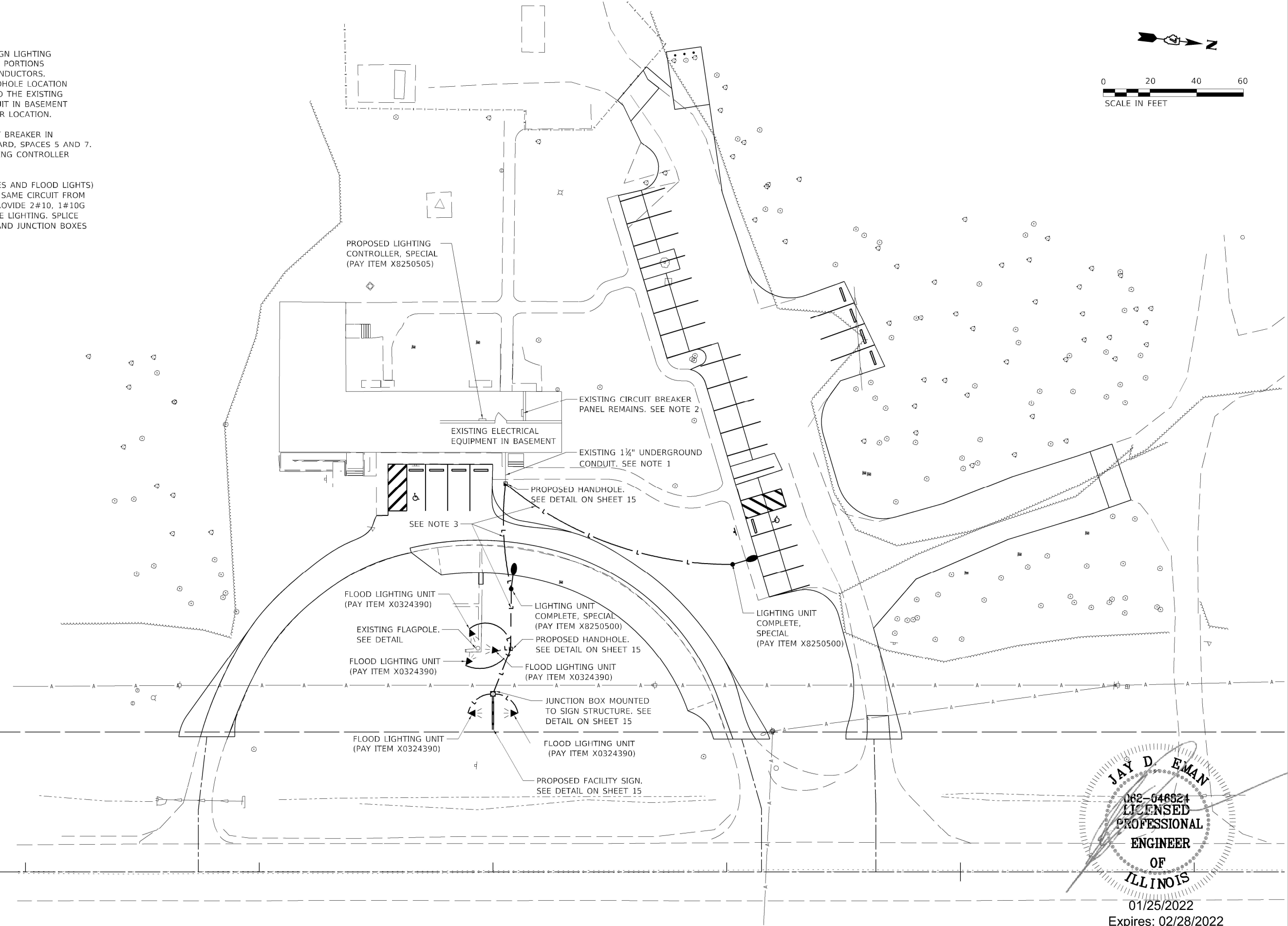
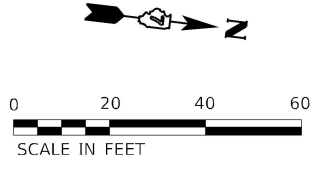
ELECTRICAL GENERAL NOTES, BILL OF MATERIAL & LEGEND
IDNR REGION 5 HEADQUARTERS - ROAD AND PARKING IMPROVEMENTS

SCALE: NONE SHEET 1 OF 1 SHEETS STA. TO STA.

F.A. RTE.	SECTION	COUNTY	TOTAL SHEETS	SHEET NO.
IDNR	IDNR R5 PARKING	FRANKLIN	16	12
			CONTRACT NO. 46931	
		ILLINOIS	FED. AID PROJECT	

NOTES:

- EXISTING CONDUIT FOR THE SIGN LIGHTING BRANCH CIRCUIT REMAINS AND PORTIONS REUSED. REMOVE EXISTING CONDUCTORS. INTERCEPT AT PROPOSED HANDHOLE LOCATION AND ABANDON FROM THERE TO THE EXISTING SIGN. EXTEND EXISTING CONDUIT IN BASEMENT TO THE PROPOSED CONTROLLER LOCATION.
- INSTALL A 2-POLE, 20A CIRCUIT BREAKER IN EXISTING 12 CIRCUIT PANELBOARD, SPACES 5 AND 7. CONNECT TO PROPOSED LIGHTING CONTROLLER WITH 2#12, 1#12G, 1" C
- ALL SITE LIGHTING (LIGHT POLES AND FLOOD LIGHTS) SHALL BE CONNECTED TO THE SAME CIRCUIT FROM THE LIGHTING CONTROLLER. PROVIDE 2#10, 1#10G FROM THE CONTROLLER TO THE LIGHTING. SPLICE CONDUCTORS IN HANDHOLES AND JUNCTION BOXES WHERE NECESSARY.



JAY D. EMAN
 062-046624
 LICENSED
 PROFESSIONAL
 ENGINEER
 OF
 ILLINOIS
 01/25/2022
 Expires: 02/28/2022

IDOTSSA_Standard Project Pen-til
 PEN TABLE: I:\SSA\Projects\2022\IDNR\046624\DWG\046624-02_Electrical_Site_Plan_01.dgn
 FILE: J:\2022\046624\DWG\046624-02_Electrical_Site_Plan_01.dgn
 REGION 5 OFFICE: Parking Lot04 - Drawings\DWG\CAD_Sheets\046624-02_Electrical_Site_Plan_01.dgn

Farnsworth GROUP
 2211 BRADLEY AVENUE
 CHAMPAIGN, ILLINOIS 61821
 (217) 352-7408 / info@f-w.com

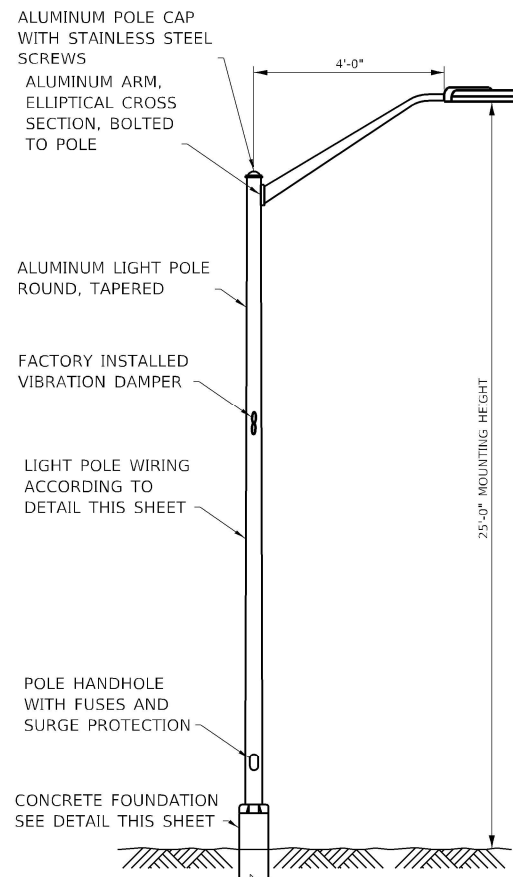
USER NAME = sllsanby	DESIGNED - DAR	REVISOR
PLOT SCALE = 2.00" / ft.	DRAWN - SRL	REVISIONS
PLOT DATE = 1/24/2022	CHECKED - JDE	DATE - 01/28/2022
4:02:59 PM	DATE - 01/28/2022	REVISIONS

DESIGNED - DAR	REVISOR
DRAWN - SRL	REVISIONS
CHECKED - JDE	DATE - 01/28/2022
DATE - 01/28/2022	REVISIONS

STATE OF ILLINOIS
DEPARTMENT OF TRANSPORTATION

ELECTRICAL SITE PLAN
IDNR REGION 5 HEADQUARTERS - ROAD AND PARKING IMPROVEMENTS
 SCALE: AS NOTED SHEET 1 OF 1 SHEETS STA. TO STA.

F.A. RTE.	SECTION	COUNTY	TOTAL SHEETS	SHEET NO.
IDNR	IDNR R5 PARKING	FRANKLIN	16	13
			CONTRACT NO. 46931	
ILLINOIS FED. AID PROJECT				



NOTES

1. PROVIDE POLE, ARM AND LUMINAIRE WITH BLACK PAINT FINISH.
2. LIGHT POLE WIRING INCLUDED WITH THIS PAY ITEM, SEE DETAIL.
3. SEE LUMINAIRE SCHEDULE. LUMINAIRE IS INCLUDED WITH THIS PAY ITEM.

**LIGHTING UNIT COMPLETE, SPECIAL
(PAY ITEM X8250500)**

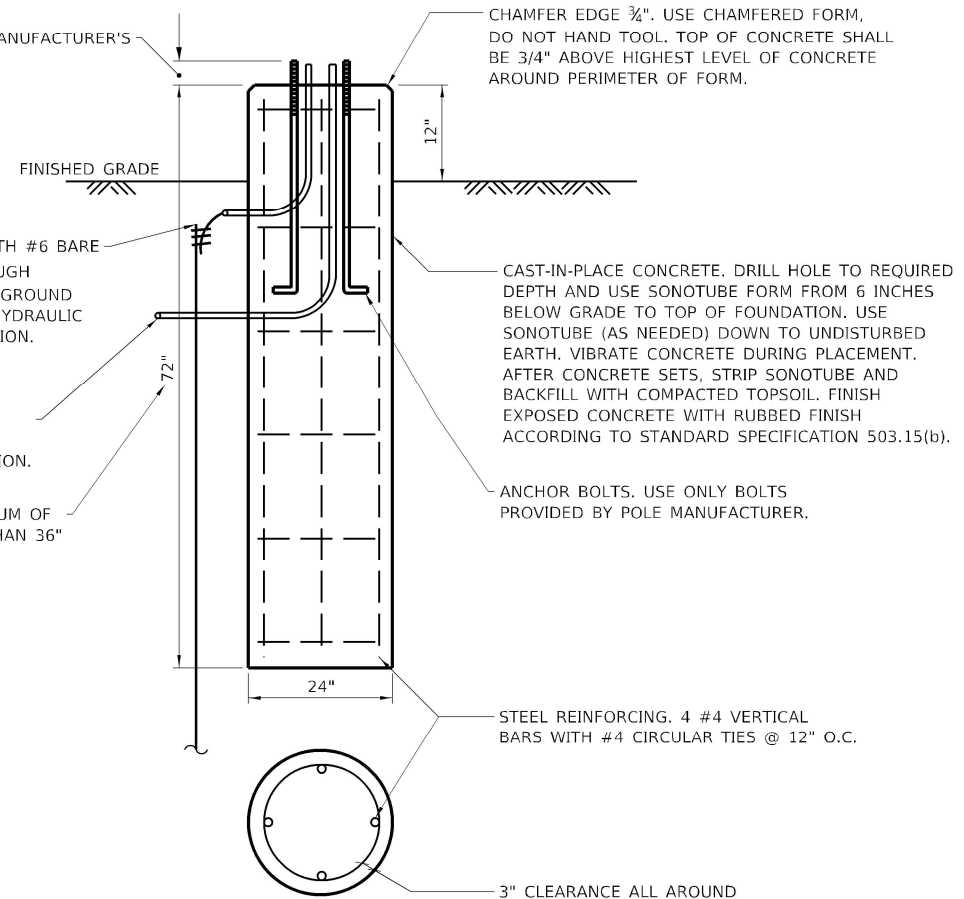
N.T.S.

BOLT STICK-OUT PER MANUFACTURER'S RECOMMENDATIONS

5/8"x10' COPPER CLAD GROUND ROD WITH #6 BARE COPPER WIRE IN 1/2" SCH 80 PVC THROUGH FOUNDATION. BOND GROUND WIRE TO GROUND ROD WITH SIDE-MOUNT CADWELD OR HYDRAULIC DIRECT-BURIAL COMPRESSION CONNECTION. INCLUDE GROUNDING WITH LIGHT POLE FOUNDATION PAY ITEM.

CONDUIT TO HANDHOLE OR NEXT POLE FOUNDATION. SEE PLAN SHEETS FOR QUANTITY OF CONDUITS AT EACH LOCATION.

FOUNDATION SHALL PENETRATE A MINIMUM OF 36" INTO UNDISTURBED CLAY. IF LESS THAN 36" UNDISTURBED CLAY IS ENCOUNTERED, CONTRACTOR SHALL CONTACT ENGINEER IMMEDIATELY FOR A RESOLUTION.

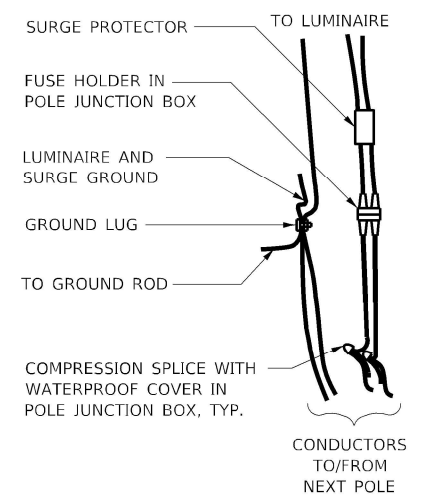


NOTES

1. DIMENSIONS SHOWN ARE BASED ON STANDARD SOIL CONDITIONS. IF OTHER THAN UNDISTURBED CLAY IS ENCOUNTERED, CONTRACTOR SHALL CONTACT ENGINEER IMMEDIATELY FOR A RESOLUTION.
2. GROUND RODS SHALL BE INSTALLED IN UNDISTURBED EARTH.
3. SEE HIGHWAY STANDARD 836001-04 FOR ADDITIONAL REQUIREMENTS.

LIGHT POLE FOUNDATION, 24" DIAMETER (PAY ITEM 83600200)

N.T.S.



NOTES

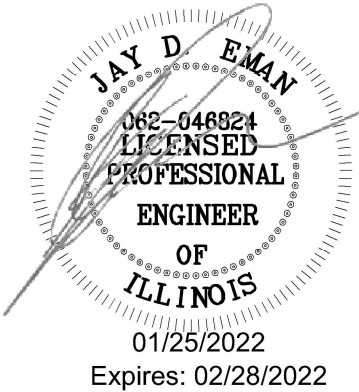
1. PROVIDE FUSE HOLDER WITH OPTIONAL RUBBER BOOT.
2. INSTALL FUSE HOLDER (WITH FUSES), SURGE PROTECTOR, CIRCUIT AND GROUNDING SPLICES IN POLE MOUNTED JUNCTION BOX.
3. CONDUCTORS IN POLE SHALL BE #10. PROVIDE SLACK TO ALLOW FUSE HOLDERS AND SURGE PROTECTOR TO BE WITHDRAWN 18" OUT OF POLE HANDHOLE.
4. POLE WIRING SHOWN IN THIS DETAIL IS INCLUDED WITH THE LIGHTING UNIT COMPLETE, SPECIAL.

LIGHT POLE WIRING

N.T.S.

LUMINAIRE SCHEDULE FOR LIGHTING UNIT COMPLETE, SPECIAL

LUMINAIRE DESCRIPTION:	LED ROADWAY COBRAHEAD	LED ROADWAY COBRAHEAD	LED ROADWAY COBRAHEAD
MANUFACTURER:	Eaton/Cooper	CREE LIGHTING	AMERICAN ELECTRIC LIGHTING
CATALOG NUMBER:	ARCH-AF16-50-U-5WQ-7030-4-BK	TRVSM-A-HT-5ME-5L-30K7-UL-BK	ATBS-P10-MVOLT-R5-3K-BK
PRODUCT NAME:	Archeon Small LED	TRAVEYO SERIES SMALL	AUTOBAHN SERIES ATBS
PHOTOMETRIC FILE NAME:	ARCH-AF16-50-D-U-5WQ-7030.ies	TRVSM-A-HT-5ME-5L-30K7-UL-XX-N_CONFIGURED.ies	ATBS_P10_XXXXX_R5_3K.ies
LIGHT SOURCE TYPE:	LIGHT EMITTING DIODE	LIGHT EMITTING DIODE	LIGHT EMITTING DIODE
LUMINAIRE WATTAGE:	53 W	40 W	40 W
CORRELATED COLOR TEMPERATURE:	3000K	3000K	3000K
COLOR RENDERING INDEX (CRI):	70	70	70
TOTAL LIGHT LOSS FACTOR:	0.9	0.9	0.9
ABSOLUTE LUMENS (INITIAL):	5,892 LUMENS	5,350 LUMENS	5,576 LUMENS
IES DISTRIBUTION:	TYPE 5	TYPE 5	TYPE 5
LUMINAIRE TILT:	NONE	NONE	NONE
LUMINAIRE ROLL:	LEVEL	LEVEL	LEVEL



STATE OF ILLINOIS
DEPARTMENT OF TRANSPORTATION

LIGHT POLE DETAILS
IDNR REGION 5 HEADQUARTERS - ROAD AND PARKING IMPROVEMENTS
SCALE: NO SCALE SHEET 1 OF 3 SHEETS STA. TO STA.

F.A. RTE.	SECTION	COUNTY	TOTAL SHEETS	SHEET NO.
IDNR	IDNR R5 PARKING	FRANKLIN	16	14
CONTRACT NO.			46931	
ILLINOIS FED. AID PROJECT				

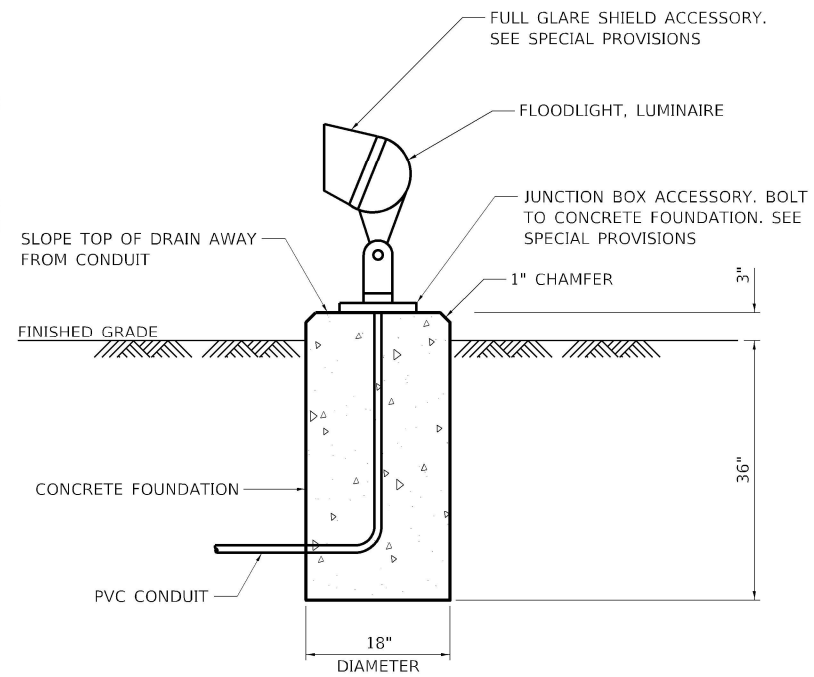
PEN TABLE: IDOTSSA_Standard Project Pen.tbl
 DRIVER: J:\SSA\Projects\2022\IDNR\046824\Drawings\046824_03_Light Pole Detail.dgn
 SHEET: 14 OF 16

Farnsworth GROUP
2211 BRADLEY AVENUE
CHAMPAIGN, ILLINOIS 61821
(217) 352-7408 / info@f-w.com

USER NAME = sllsenby	DESIGNED - DAR	REVISED
PLOT SCALE = 2.00' / in.	DRAWN - SRL	REVISED
PLOT DATE = 1/24/2022 4:03:02 PM	CHECKED - JDE	REVISED
	DATE - 01/28/2022	REVISED

NOTES:

1. FOUNDATION SHALL NOT BE COUNTED SEPARATELY AND INCLUDED IN THE FLOOD LIGHTING UNIT (PAY ITEM X0324390)
2. ADJUST AIMING AT NIGHT TO PROVIDE COMPLETE ILLUMINATION OF THE SIGN FACE AND POLE MOUNTED FLAGS

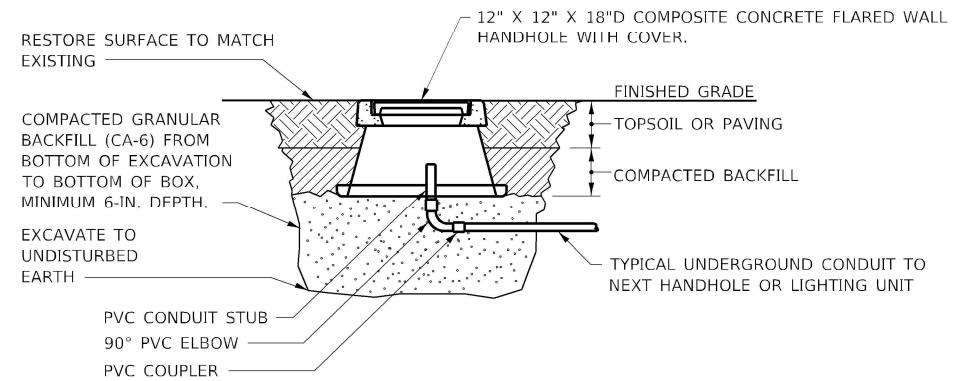


FLOOD LIGHTING UNIT (PAY ITEM X0324390)

N.T.S.

NOTES:

1. PROVIDE HANDHOLE ACCORDING TO STANDARD SPECIFICATIONS SECTION 814 AND WITH FEATURES SHOWN IN THIS DETAIL.
2. INSTALL TOP FLUSH WITH FINISHED GRADE. MATCH SLOPE OF FINISHED GRADE.
3. PROVIDE HANDHOLE COVER WITH LEGEND THAT READS "LIGHTING." COVER AND RIM SHALL BE CONCRETE GRAY COLOR.
4. SEE PLAN SHEETS FOR ACTUAL CONDUITS REQUIRED AT EACH LOCATION.
5. CONDUITS ENTERING HANDHOLE SHALL BE VERTICAL AND PERPENDICULAR TO BOTTOM OF BOX. POSITION CONDUITS NEAR CENTER OF BOX.
6. HANDHOLE ASSEMBLY SHALL BE RATED FOR TIER 15 LOADING.

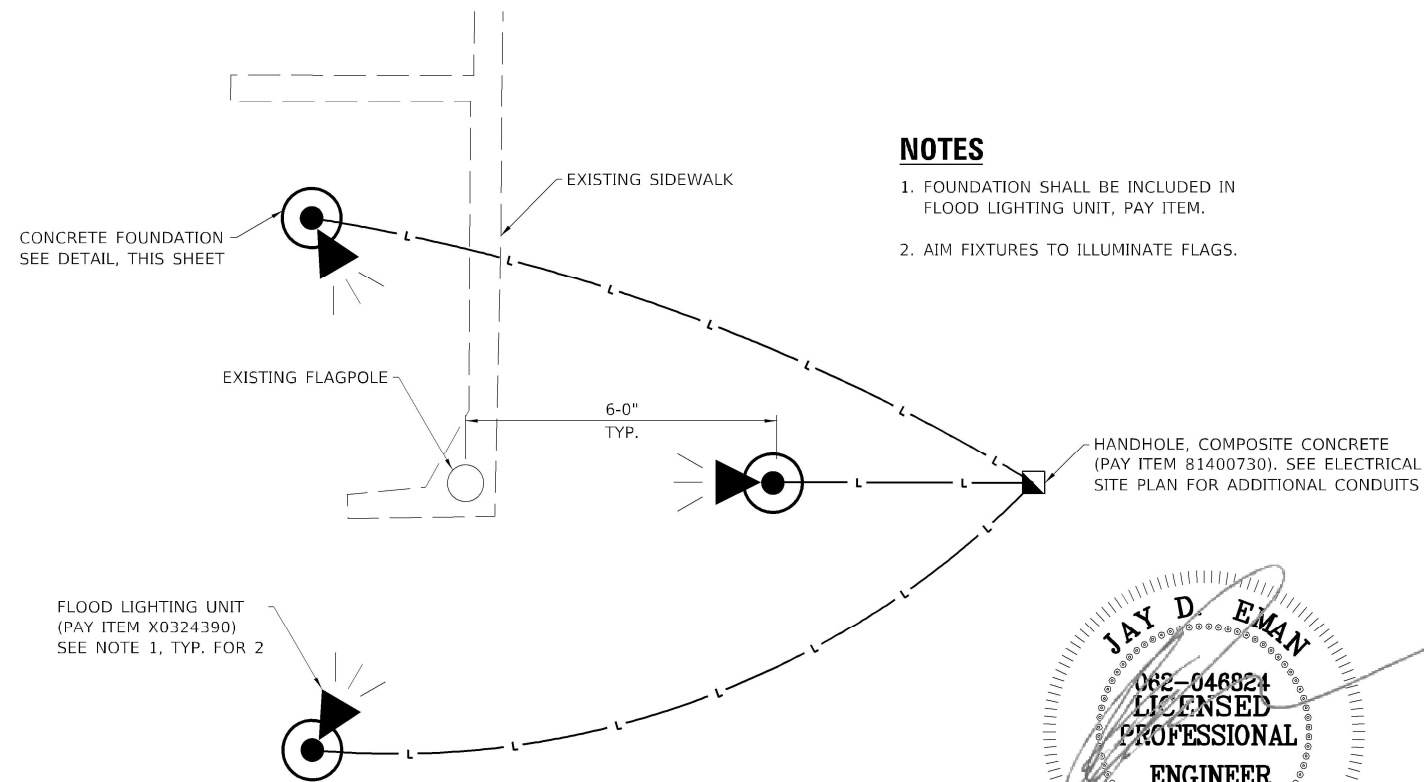


HANDHOLE, COMPOSITE CONCRETE (PAY ITEM 81400730)

N.T.S.

NOTES

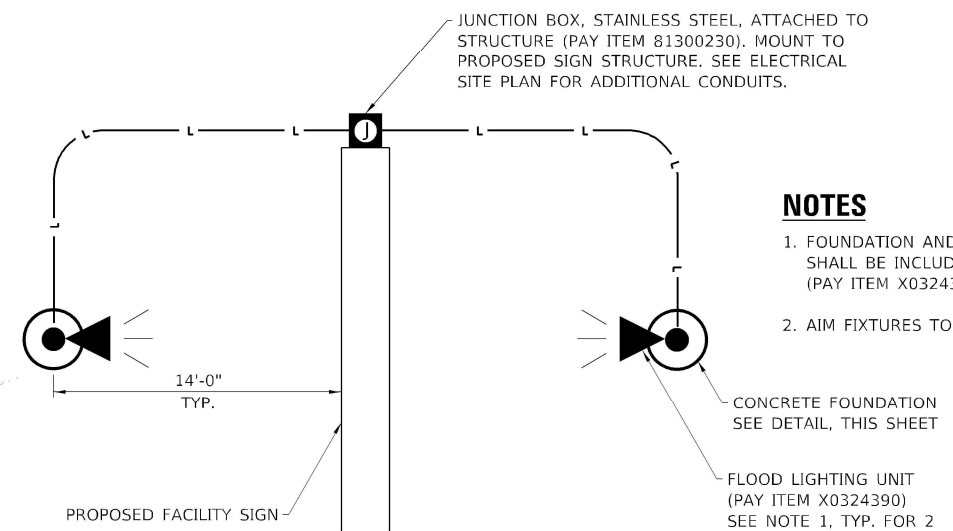
1. FOUNDATION SHALL BE INCLUDED IN FLOOD LIGHTING UNIT, PAY ITEM.
2. AIM FIXTURES TO ILLUMINATE FLAGS.



FLAGPOLE LIGHTING PLAN DETAIL

NOTES

1. FOUNDATION AND CONDUIT TO JUNCTION BOX SHALL BE INCLUDED IN FLOOD LIGHTING UNIT (PAY ITEM X0324390).
2. AIM FIXTURES TO ILLUMINATE SIGN.



FACILITY SIGN LIGHTING PLAN DETAIL

N.T.S.

PEN TABLE: DOTSSS_Standard Project Pen.tbl
 DRIVER: 2211 BRADLEY AVENUE
 SHEET: 2/20/2018 10:17:27 - DOT 18-CA13 Region 5 Office Parking Lot04_Drawing\p1\DWG\CAD_Sheets\046931_04_Electrical\Detail.dgn

Farnsworth GROUP
 2211 BRADLEY AVENUE
 CHAMPAIGN, ILLINOIS 61821
 (217) 352-7408 / info@f-w.com

USER NAME = sllsntby	DESIGNED N.J.S. DAR	REVISED
PLOT SCALE = 2.00' / in.	DRAWN - SRL	REVISED
PLOT DATE = 1/24/2022 4:03:05 PM	CHECKED - JDE	REVISED
	DATE - 01/28/2022	REVISED

STATE OF ILLINOIS
DEPARTMENT OF TRANSPORTATION

ELECTRICAL DETAILS	
IDNR REGION 5 HEADQUARTERS - ROAD AND PARKING IMPROVEMENTS	
SCALE: NO SCALE	SHEET 2 OF 3 SHEETS STA. TO STA.

F.A. RTE.	SECTION	COUNTY	TOTAL SHEETS	SHEET NO.
IDNR	IDNR R5 PARKING	FRANKLIN	16	15
			CONTRACT NO. 46931	
ILLINOIS FED. AID PROJECT				

WALL MOUNTED
CONTROLLER ENCLOSURE,
MINIMUM DIMENSIONS:
24" x 24" x 12"
NEMA 12 RATED

INSULATED
MOUNTING
BOARD

TO EXISTING
PANELBOARD

No. 12 WIRE
NEUTRAL BAR

EQUIPMENT
GROUND BAR

- ① TIME SWITCH.
- ② HAND-OFF-AUTO SELECTOR SWITCH, COVER MOUNTED
- ③ 30 AMP, ELECTRICALLY HELD CONTACTOR, 120V COIL.
- ④ 15 AMP, 1-POLE CIRCUIT BREAKER.
- ⑤ 20 AMP, 2-POLE CIRCUIT BREAKER.
- ⑥ SURGE ARRESTER.
- ⑦ CONNECT TO CIRCUIT BREAKER IN EXISTING PANELBOARD.
- ⑧ TERMINAL BLOCK SIZED FOR CONDUCTORS AS SHOWN ON PLANS.

SPARE

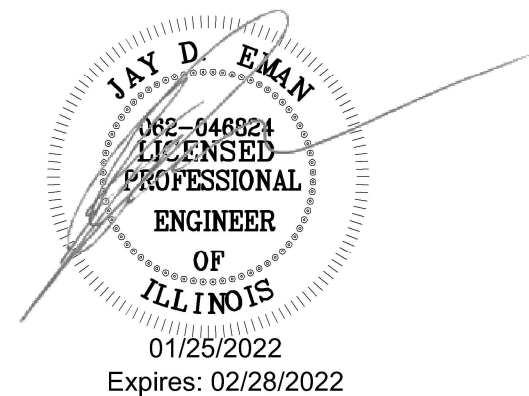
BRANCH LIGHTING CIRCUIT
2#10, 1#10G, 1¼"C

NOTES

1. PROVIDE 12x9x1 WATERTIGHT POLICH MOUNTED INSIDE CONTROLLER DOOR WITH AS-BUILT PLANS AND SCHEMATICS.
2. PROVIDE ENGRAVED NAMEPLATE ON FRONT OF ENCLOSURE READING "LIGHTING CONTROL CABINET".
3. ENCLOSURE SHALL BE MOUNTED TO WALL WITH LAG-BOLTS.

LIGHTING CONTROLLER, SPECIAL (PAY ITEM X8250505)

NO SCALE



PLOT FILE: \\F:\Projects\2022\124\124-01\124-01-01\124-01-01-01.dwg
 PLOT DATE: 1/24/2022 4:03:07 PM
 USER: sllsenby
 FILE: J:\2022\124\124-01\124-01-01\124-01-01-01.dwg



USER NAME = sllsenby	DESIGNED - DAR	REVISED
PLOT SCALE = 2.00' / in.	DRAWN - SRL	REVISED
PLOT DATE = 1/24/2022 4:03:07 PM	CHECKED - JDE	REVISED
	DATE - 01/28/2022	REVISED

STATE OF ILLINOIS
DEPARTMENT OF TRANSPORTATION

LIGHTING CONTROLLER DETAIL
IDNR REGION 5 HEADQUARTERS - ROAD AND PARKING IMPROVEMENTS
SCALE: NO SCALE SHEET 3 OF 3 SHEETS STA. TO STA.

F.A. RTE.	SECTION	COUNTY	TOTAL SHEETS	SHEET NO.
IDNR	IDNR R5 PARKING	FRANKLIN	16	16
			CONTRACT NO. 46931	
		ILLINOIS FED. AID PROJECT		