

| | | | | |
|-------------|---------|--------------------|--------------|-----------|
| F.A.P. RTE. | SECTION | COUNTY | TOTAL SHEETS | SHEET NO. |
| 351 | 536T-1 | COOK | 8 | 1 |
| ILLINOIS | | CONTRACT NO. 60162 | | |

STATE OF ILLINOIS
DEPARTMENT OF TRANSPORTATION
DIVISION OF HIGHWAYS

**PROPOSED
HIGHWAY PLANS**

FOR INDEX OF SHEETS, SEE SHEET NO. 2

DESIGN DESIGNATION

OTHER PRINCIPAL ARTERIAL
ADT 16,900 (2009)
SPEED LIMIT 45 MPH

FAP 351 / IL ROUTE 7 (US ROUTE 6)

SECTION 536T-1

OVER SPRING CREEK (0.5 MI. E. OF WILL-COOK RD.)

CULVERT REHABILITATION

COOK COUNTY

D-91-086-10

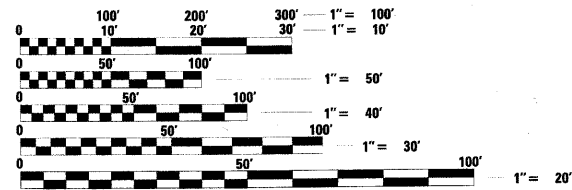
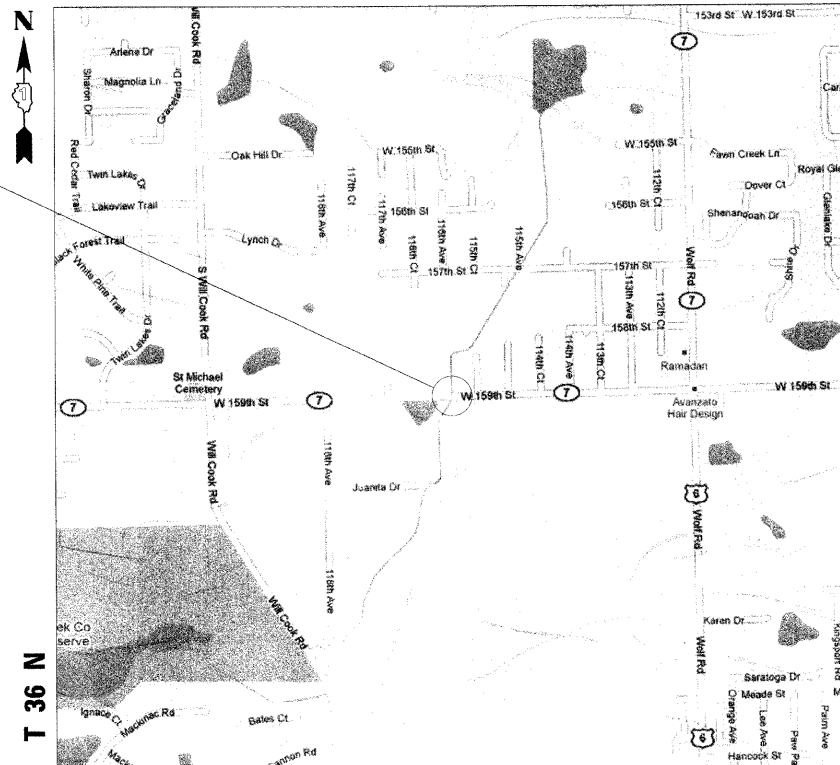


IMPROVEMENT LOCATED IN
VILLAGE OF ORLAND PARK

C-91-086-10

ORLAND TOWNSHIP R 12 E - 3rd PM

IMPROVEMENT LOCATION
IL ROUTE 7 (US ROUTE 6)
OVER SPRING CREEK
STRUCTURE NO: 016-1210



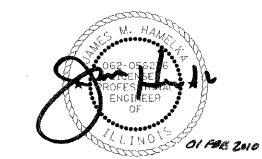
FULL SIZE PLANS HAVE BEEN PREPARED USING STANDARD ENGINEERING SCALES. REDUCED SIZED PLANS WILL NOT CONFORM TO STANDARD SCALES. IN MAKING MEASUREMENTS ON REDUCED PLANS, THE ABOVE SCALES MAY BE USED.

J.U.L.I.E.
JOINT UTILITY LOCATION INFORMATION FOR EXCAVATION
1-800-892-0123
OR 811

PROJECT MANAGER: MR. ISAAC KWARTENG (847) 705-4230
PROJECT ENGINEER: MR. ALIX BRICE (847) 705-4552

CONTRACT NO. 60162

LOCATION MAP
GROSS AND NET LENGTH OF IMPROVEMENT = 18.0 FT. = 0.003 MILE



COLLINS ENGINEERS, INC.
JAMES M. HAMELKA
NO. 062-056236
EXPIRES 11-30-2011

COLLINS ENGINEERS, INC.
123 N. WACKER DR., SUITE 300
CHICAGO, IL 60606
(312) 704-9300
ILLINOIS PROFESSIONAL DESIGN FIRM
LICENSE NO. 184-000993

STATE OF ILLINOIS
DEPARTMENT OF TRANSPORTATION
DIVISION OF HIGHWAYS

SUBMITTED FEBRUARY 1, 2010

Diane M. O'Keefe DEPUTY DIRECTOR OF HIGHWAYS, REGION ONE ENGINEER
March 19, 2010
Scott E. Still, P.E. Acting ENGINEER OF DESIGN AND ENVIRONMENT
March 19, 2010
Christine M. Reed, P.E. DIRECTOR OF HIGHWAYS CHIEF ENGINEER

PRINTED BY THE AUTHORITY OF THE STATE OF ILLINOIS

STATE OF ILLINOIS
DEPARTMENT OF TRANSPORTATION

SUMMARY OF QUANTITIES

URBAN

Y007

INDEX OF SHEETS

- 1 Title Sheet
- 2 Index of Sheets, State Standards, General Notes and Summary of Quantities
- 3 Detour Map
- 4 5 Structure Plans S1-S2
- 6-8 District One Standards Highway Standards

INDEX OF HIGHWAY STANDARDS

| Standard No. | Description |
|--------------|---|
| 000001-05 | Standard Symbols, Abbreviations And Patterns |
| 001001-02 | Areas Of Reinforcement Rebars |
| 701901-01 | Traffic Control Devices |
| 780001-02 | Typical Pavement Markings |
| 781001-03 | Typical Applications Raised Reflective Pavement Markers |

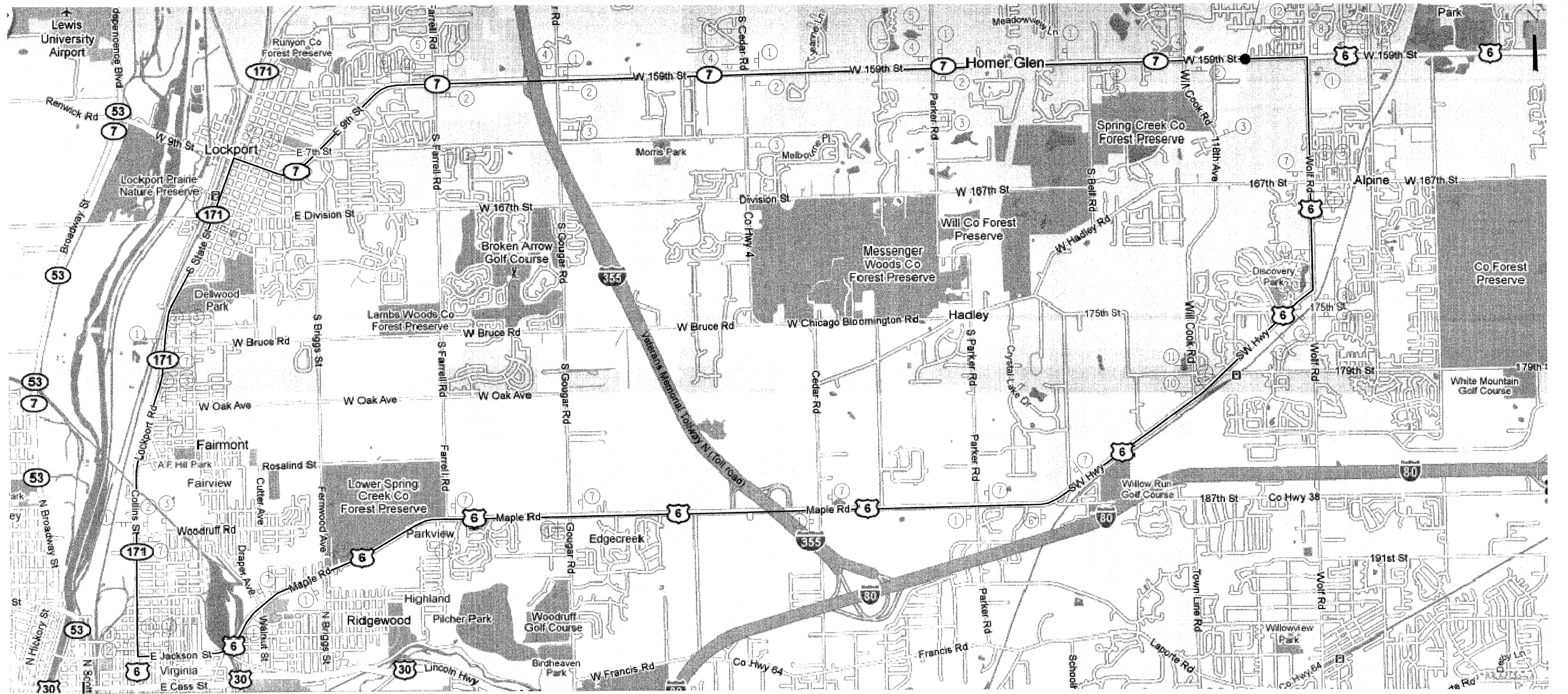
GENERAL NOTES

1. 10 ft (3 m) transitions shall be used to match proposed items of work to existing items in the field, unless otherwise shown. The transitions shall be paid for at the contract unit price for the proposed item of work specified.
2. Where artificial lighting is utilized in night operations, the Contractor shall exercise the utmost precautions in preventing adverse visibility to the motoring public and adjoining residential areas.
3. For stabilization, all Type III barricades shall require a minimum of four (4) sandbags per barricade.
4. The Resident Engineer must contact the Traffic Control Supervisor at (847)705-4470 at least 72 hours prior to installation of the temporary control devices.
5. The Resident Engineer shall contact the Area Traffic Field Engineer (Patrice Harris) at (708) 597-9800 at least two (2) weeks prior to the placement of permanent pavement markings.
6. All pavement markings and raised reflectors affected by the bridge repairs shall be replaced. Nominal quantities have been included in the contract for this work.
7. The Contractor will not be allowed to set up a yard or field office on State property without written permission from the Department.
8. Do not scale these plans for construction purposes.
9. Plan dimensions and details relative to existing plans are subject to routine variations. The Contractor shall field verify existing dimensions and details affecting new construction and make necessary approved adjustments prior to construction or ordering of materials. Such variations shall not be cause for additional compensation for a change in scope of the work. However, the Contractor will be paid for the quantity actually furnished based upon the unit price bid for the work.
10. During construction operations, loose material deposits that obstruct the flow of water in draining the area shall be removed before the end of each work day. At the conclusion of construction operations, all drainage structures (new and existing) shall be free from all dirt and debris. This work will not be paid for separately but shall be considered incidental to the contract.
11. All type I and Type II barricades shall have two (2) sandbags on the bottom rail.
12. All raised reflective pavement markers (bridge) shall be low profile.
13. Before beginning any work, the Contractor shall retain and record for future reference, all existing pavement marking lines, symbols and letters (and raised reflective markers) in order that these locations can be re-established for striping. Exact locations of all pavement markings and raised reflective pavement markers shall be as directed by the Engineer.

| CODE | ITEM DESCRIPTION | UNIT | QUANTITY | 100% STATE |
|------------------|---|---------|----------|------------|
| 42001300 | Protective Coat | Sq.Yd. | 98 | 98 |
| 44000915 | Hot-Mix Asphalt Surface Removal (Deck) | Sq.Yd. | 98 | 98 |
| 50300255 | Concrete Superstructure | CUYD | 26 | 26 |
| 50300260 | Bridge Deck Grooving | SA YD | 89 | 89 |
| 50800205 | Reinforcement Bars, Epoxy Coated | POUND | 7,850 | 7,850 |
| 67000400 | Engineer's Field Office, Type A | CAL.MO | 1 | 1 |
| 67100100 | Mobilization | L.SUM | 1 | 1 |
| 70102550 | Traffic Control and Protection for Temporary Detour | EACH | 1 | 1 |
| * 78008210 | Polyurea Pavement Marking, Type I - Line 4" | FOOT | 72 | 72 |
| * 78100105 | Raised Reflective Pavement Marker (Bridge) | EACH | 2 | 2 |
| X0322256 | Temporary Information Signing | Sq.Ft. | 50 | 50 |
| 70104000 | Changeable Message Sign | Cal.Mo. | 2 | 2 |
| 85000300 | Maintenance of Existing Traffic Signal Installation | L.SUM | 1 | 1 |
| X0325737 | Temporary Traffic Signal Timing | Each | 2 | 2 |
| *Specialty Items | | | | |

| | | | | | | | | | | | |
|-----------------------------|---------------------------|------------------------|------------|---|---|---------------------------|---------|--------|--------------|-----------|--------------------|
| F.I.L. DISTRICT ENGINEER | USER NAME: J0010001 | DESIGNED: J.M. HAMELKA | REVISED: - | STATE OF ILLINOIS DEPARTMENT OF TRANSPORTATION | GENERAL NOTES, INDEX OF SHEETS, STATE STANDARDS, AND 300 FAP 351 / IL ROUTE 7 (US ROUTE 6) OVER SPRING CREEK | F.A.P. RTE. | SECTION | COUNTY | TOTAL SHEETS | SHEET NO. | CONTRACT NO. 60162 |
| | PLOT SCALE: 1" = 200' IN. | CHECKED: J.M. HAMELKA | REVISED: - | | | 351 | 536T-1 | JEK | 8 | 2 | |
| PLOT DATE: 1/20/10 | DATE: JANUARY, 2010 | REVISED: - | SCALE: | SHEET NO. OF SHEETS | STA. TO STA. | ILLINOIS FED. AID PROJECT | | | | | |

STATE OF ILLINOIS
DEPARTMENT OF TRANSPORTATION



| | | | | | | | | | | | | |
|--------------------------|--------------------------|--------------------------|--------------------------|--------------------------|--------------------------|--------------------------|--------------------------|--------------------------|--------------------------|--------------------------|-------------------|--------------|
| DETOUR EAST ILLINOIS 7 ↑ | DETOUR EAST ILLINOIS 7 ← | DETOUR EAST ILLINOIS 7 ← | DETOUR EAST ILLINOIS 7 → | DETOUR EAST ILLINOIS 7 ↘ | DETOUR EAST ILLINOIS 7 ↙ | DETOUR WEST ILLINOIS 7 ↑ | DETOUR WEST ILLINOIS 7 ← | DETOUR WEST ILLINOIS 7 ↙ | DETOUR WEST ILLINOIS 7 → | DETOUR WEST ILLINOIS 7 ↘ | ROAD CLOSED AHEAD | DETOUR AHEAD |
| ① | ② | ③ | ④ | ⑤ | ⑥ | ⑦ | ⑧ | ⑨ | ⑩ | ⑪ | ⑫ | ⑬ |

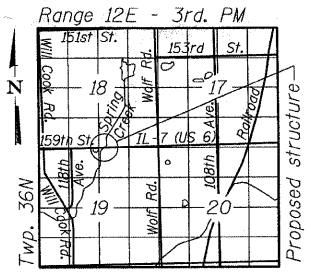
See Sheet 8 for Signs Standards.

Legend:
— Detour Route

Note:
For additional requirements and signage, refer to District One Standard TC-21-Detour Signing for Closing-State Highways. Additional signage may be required by the Resident Engineer. All work and materials shall be included in the pay item for "Traffic Control and Protection for Temporary Detour."

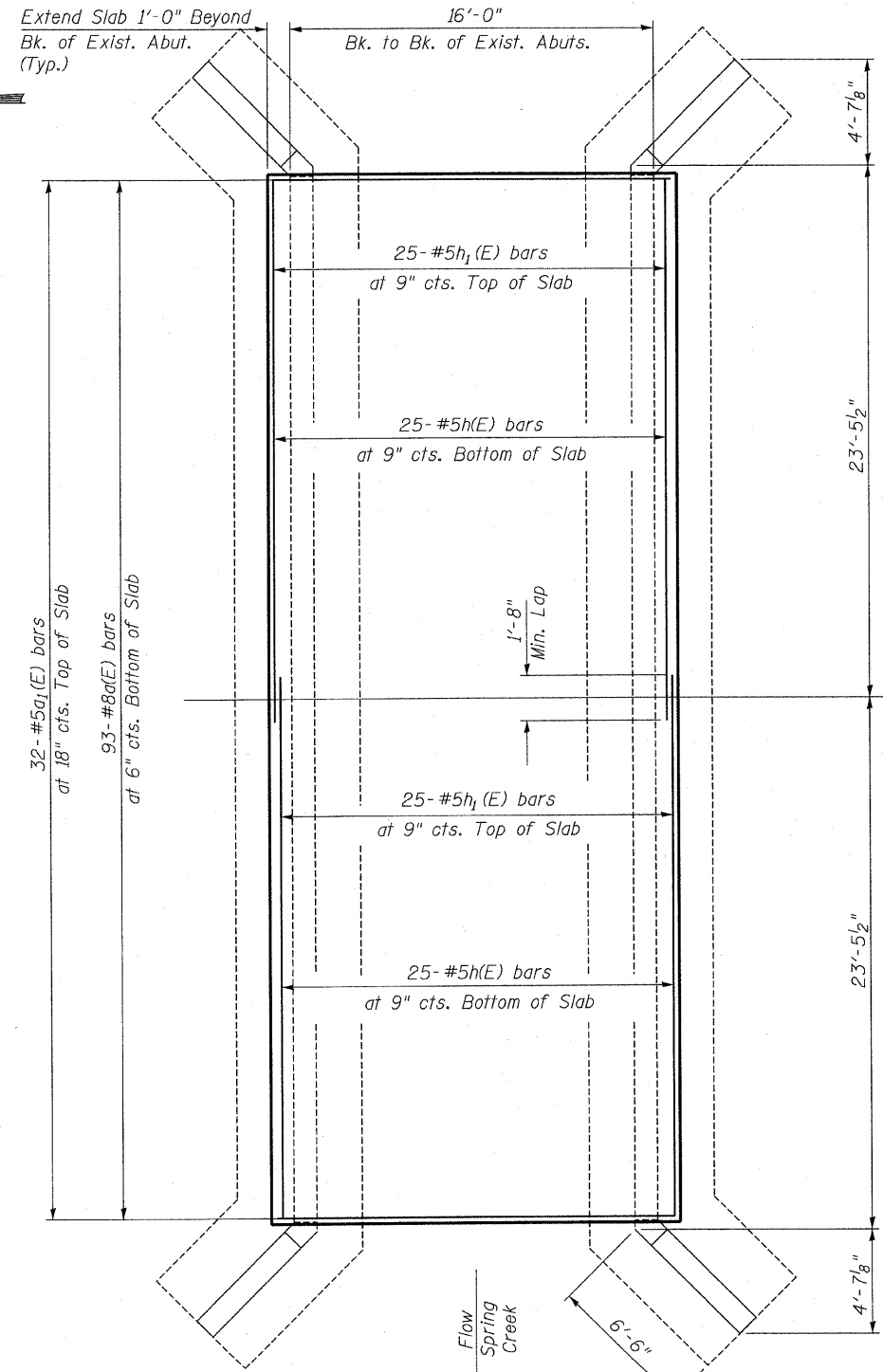
| | | | | | | | | | | | | |
|---|------------------------|-------------------------|---------------------------|---|---|--|--|-----------------|----------------|-------------|----------------|-------------|
| FILE NAME = D160162-sht-detour.dgn | USER NAME = 1001eng | DESIGNED - J.M. HAMELKA | REVISED - | STATE OF ILLINOIS DEPARTMENT OF TRANSPORTATION | DETOUR MAP FAP 351 / IL ROUTE 7 (US ROUTE 6) OVER SPRING CREEK | | | F.A.P. RTE. 351 | SECTION 536T-1 | COUNTY COOK | TOTAL SHEETS 8 | SHEET NO. 3 |
| PLOT SCALE = 1,000' = 1" IN. | CHECKED - J.M. HAMELKA | REVISED - | CONTRACT NO. 60162 | | | | | | | | | |
| PLOT DATE = 2/25/2010 | DATE - JANUARY, 2010 | REVISED - | ILLINOIS FED. AID PROJECT | | | | | | | | | |
| SCALE: SHEET NO. OF SHEETS STA. TO STA. | | | | | | | | | | | | |

STATE OF ILLINOIS
DEPARTMENT OF TRANSPORTATION

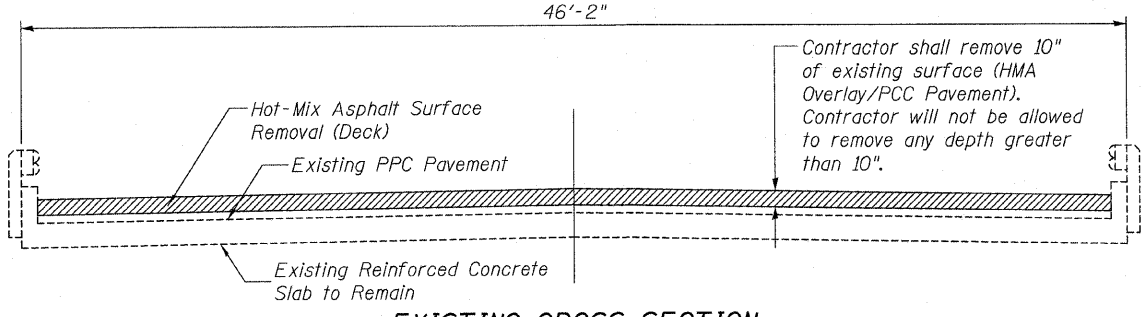


LOCATION SKETCH

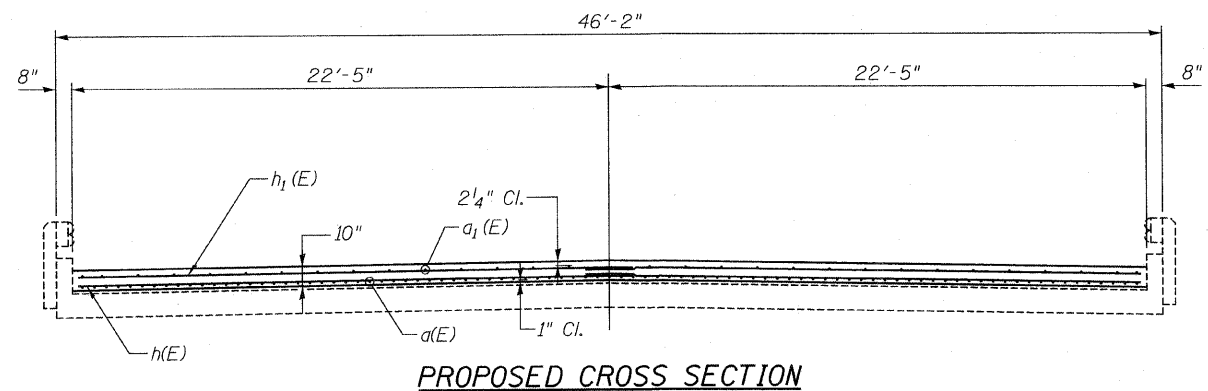
Existing Structure:
The existing structure is a single span reinforced concrete slab bridge.
An assigned detour will be utilized to redirect traffic around the structure during construction.
No salvage.



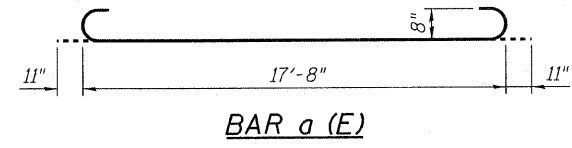
EXISTING PLAN



EXISTING CROSS SECTION



PROPOSED CROSS SECTION



BAR a (E)

BILL OF MATERIAL

| BAR | NO. | SIZE | LENGTH | SHAPE |
|-------|-----|------|--------|-------|
| a(E) | 93 | #8 | 19'-6" | |
| a1(e) | 32 | #5 | 17'-8" | |
| h(E) | 50 | #5 | 23'-1" | |
| h1(E) | 50 | #5 | 23'-1" | |

| ITEM | UNIT | QUANTITY |
|--|---------|----------|
| Hot Mix Asphalt Surface Removal (Deck) | Sq. Yd. | 98 |
| Reinforcement Bars, Epoxy Coated | Pound | 7,850 |
| Concrete Superstructure | Cu. Yd. | 26 |
| Protective Coat | Sq. Yd. | 98 |
| Bridge Deck Grooving | Sq. Yd. | 89 |

DESIGN SPECIFICATIONS

LOADING HS-20
AASHTO Standard Specifications for Highway Bridges, 17th Edition

DESIGN STRESSES

$f'_c = 3,500$ psi
 $f_y = 60,000$ psi

SCOPE OF WORK

1. Remove 10" Thickness of Existing Overlay/PCC Pavement.
2. Place New Structural Reinforced Concrete Overlay.
3. The Protective Coat shall be placed on the inside and top face of the Headwalls.



COLLINS ENGINEERS, INC.
STAN-LEE KADERBEK
NO. 081-004620
EXPIRES 11-30-2010

GENERAL PLAN & SECTION
F.A.P. ROUTE 351 SEC. 536T-1
COOK COUNTY
STATION 453+72
STRUCTURE NO. 016-1210

| |
|--------------|
| DESIGNED JMH |
| CHECKED JMH |
| DRAWN DR |
| CHECKED JMH |

| | |
|----------|------------------------------------|
| EXAMINED | 2010 |
| PASSED | ENGINEER OF BRIDGES AND STRUCTURES |

| | | | | | |
|---------------------------------|----------------|---------|--------|-----------------|--------------|
| SHEET NO. S1 OF S2 SHEETS | F.A.P. RTE. | SECTION | COUNTY | TOTAL SHEETS | SHEET NO. |
| | 351 | 536T-1 | COOK | 8 | 4 |
| CONTRACT NO. 60162 | | | | | |
| ILLINOIS FED. AID PROJECT | | | | | |

STATE OF ILLINOIS
DEPARTMENT OF TRANSPORTATION

INDEX OF SHEETS

S1. General Plan and Section

S2. General Notes, Bill of Materials and Index of Sheets

GENERAL NOTES:

1. Reinforcement bars shall conform to the requirements of ASTM A 706 Grade 60. See Special Provisions.
2. Reinforcement bars designated (E) shall be epoxy coated.
3. Plan dimensions and details relative to existing plans are subject to nominal construction variations. The Contractor shall field verify existing dimensions and details affecting new construction and make necessary approved adjustments prior to construction or ordering of materials. Such variations shall not be cause for additional compensation for a change in scope of the work, however, the Contractor will be paid for the quantity actually furnished at the unit price bid for the work.
4. An assigned detour shall be utilized to maintain traffic during construction.
5. Hot-Mix Asphalt Surface Removal (Deck) will include any PCC Pavement Removal required to achieve 10 inches of surface removal on the areas shown on the Plans. Hot-Mix Asphalt Surface Removal (Deck) shall include removal areas on Approaches.

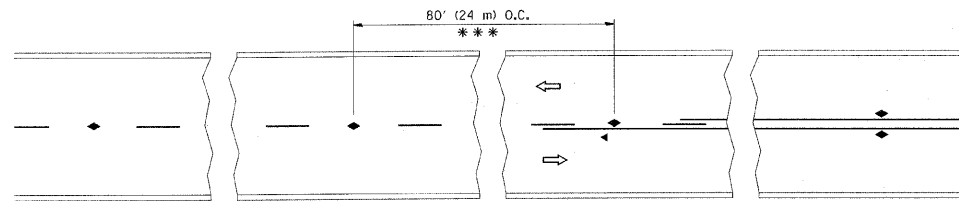
TOTAL BILL OF MATERIAL

| ITEM DESCRIPTION | UNIT | SUPER | SUB | TOTAL |
|--|---------|-------|-----|-------|
| Hot-Mix Asphalt Surface Removal (Deck) | Sq. Yd. | 98 | | 98 |
| Reinforcement Bars, Epoxy Coated | Pound | 7,850 | | 7,850 |
| Concrete Superstructure | Cu. Yd. | 26 | | 26 |
| Protective Coat | Sq. Yd. | 93 | | 93 |
| Bridge Deck Grooving | Sq. Yd. | 89 | | 89 |
| | | | | |
| | | | | |
| | | | | |
| | | | | |

GENERAL NOTES, BILL OF MATERIALS
AND INDEX OF SHEETS
STRUCTURE NO. 016-1210

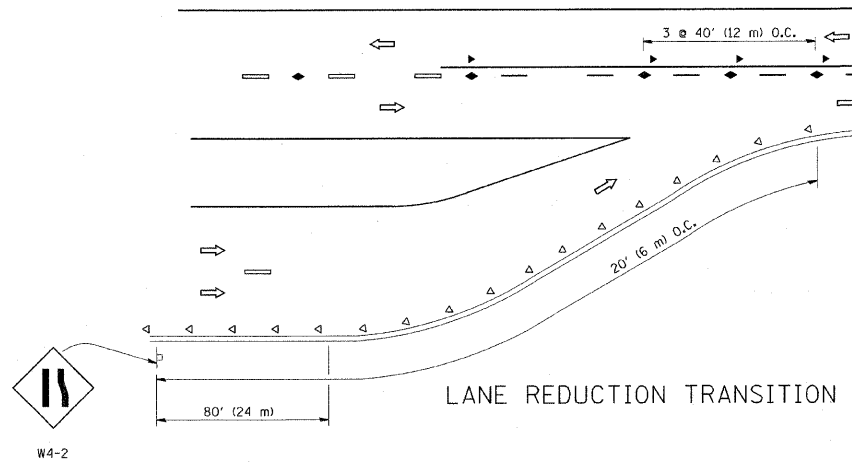
| | |
|---------------------|------------------------------------|
| DESIGNED <i>JMH</i> | 2018 |
| CHECKED <i>JMH</i> | EXAMINED |
| DRAWN <i>DR</i> | ENGINEER OF STRUCTURAL SERVICES |
| CHECKED <i>JMH</i> | PASSED |
| | ENGINEER OF BRIDGES AND STRUCTURES |

| | | | | | |
|---------------------------------|-----------------------|-------------------|--------------------|----------------------|-------------------|
| SHEET NO. S2 OF S2 SHEETS | F.A.P. RTE. 351 | SECTION 536T-1 | COUNTY COOK | TOTAL SHEETS 8 | SHEET NO. 5 |
| | | | CONTRACT NO. 60I62 | | |
| ILLINOIS FED. AID PROJECT | | | | | |

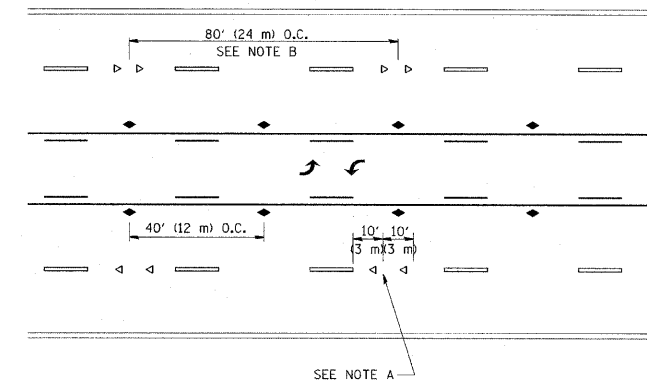


*** REDUCE TO 40' (12 m) O.C. ON CURVES WITH POSTED OR ADVISORY SPEED 45 M.P.H. (70 km/h) OR LESS.

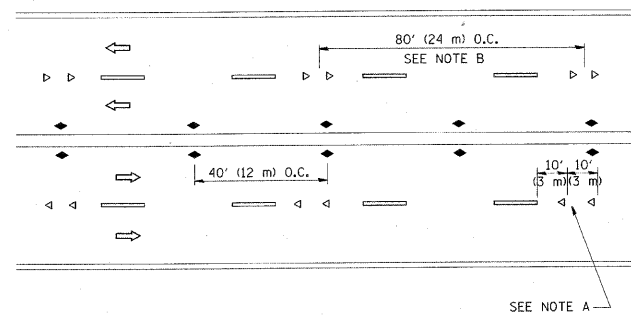
TWO-LANE/TWO-WAY



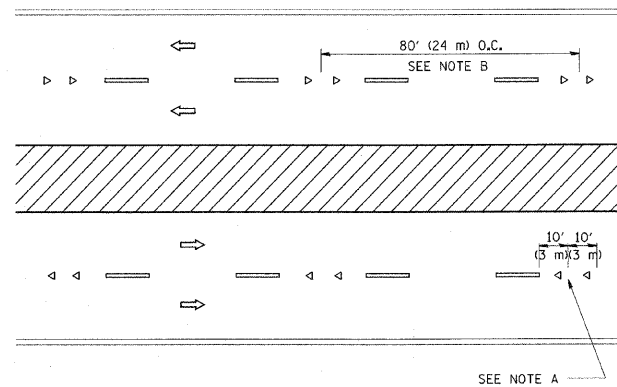
LANE REDUCTION TRANSITION



TWO-WAY LEFT TURN



MULTI-LANE/UNDIVIDED



MULTI-LANE/DIVIDED

GENERAL NOTES

1. MARKERS USED WITH DASHED LINES SHALL BE CENTERED IN THE GAP BETWEEN SEGMENTS.
2. MARKERS USED ADJACENT TO SOLID LINES SHALL BE OFFSET 2 TO 3 (50 TO 75) TOWARD TRAFFIC AS SHOWN.
3. MARKERS THROUGH TANGENTS LESS THAN 500' (150 m) IN LENGTH BETWEEN CURVES SHALL BE INSTALLED AT THE LESSER OF THE TWO CURVE SPACINGS.

SYMBOLS

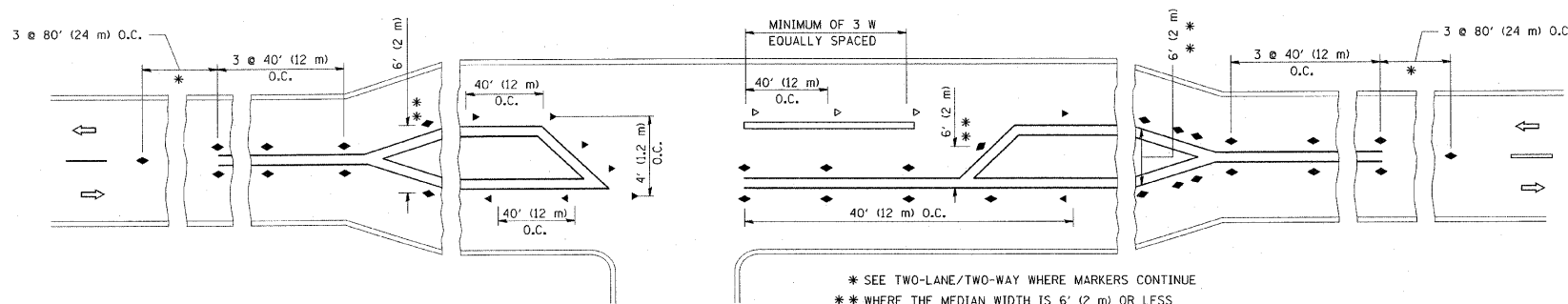
- YELLOW STRIPE
- WHITE STRIPE
- ◀ ONE-WAY AMBER MARKER
- ◁ ONE-WAY CRYSTAL MARKER (W/O)
- ◆ TWO-WAY AMBER MARKER

LANE MARKER NOTES

- A. USE DOUBLE LANE LINE MARKERS SPACED AS SHOWN.
- B. REDUCE TO 40' (12 m) O.C. ON CURVES WHERE ADVISORY SPEEDS ARE 10 M.P.H. (20 km/h) LOWER THAN POSTED SPEEDS.

DESIGN NOTES

1. DOUBLE LANE LINE MARKERS SHALL BE USED UNLESS SPECIFIED OTHERWISE.
2. EXCEPT AS SHOWN ON THE LANE REDUCTION TRANSITION AND FREEWAY EXIT RAMP DETAIL, MARKERS ARE NOT TO BE SPECIFIED ON RIGHT EDGE LINES.
3. THE EXACT MARKER LIMITS, SPACING, AND COLOR SHOULD BE INCLUDED IN THE PLANS.
4. MARKERS SHOULD NOT BE USED ALONGSIDE CURBS EXCEPT FOR EXTREMELY SHORT SECTIONS OF CURBS WHERE NOT MORE THAN TWO MARKERS WOULD BE INVOLVED.

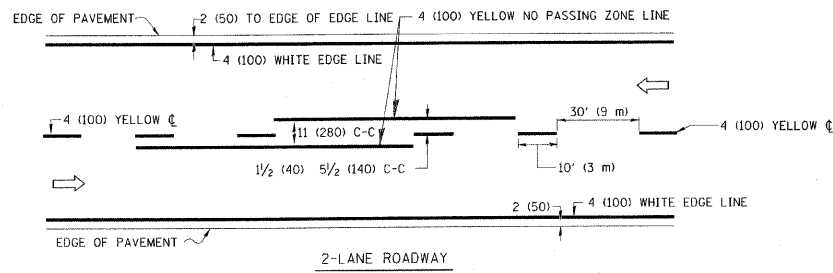


LEFT TURN

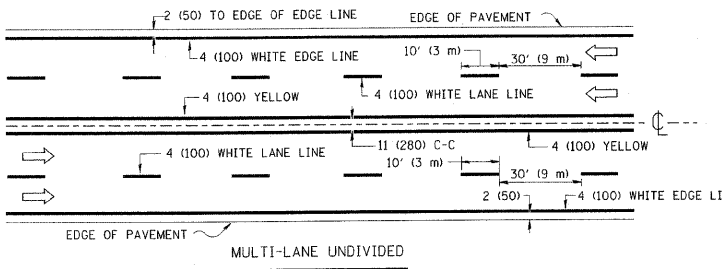
* SEE TWO-LANE/TWO-WAY WHERE MARKERS CONTINUE
 ** WHERE THE MEDIAN WIDTH IS 6' (2 m) OR LESS USE TWO-WAY MARKERS.

All dimensions are in inches (millimeters) unless otherwise shown.

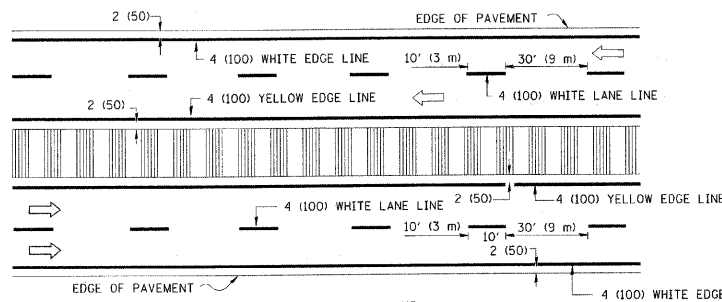
| | | | | | | | | | | | | |
|--|------------------------|--|--|---|--|-------------------------|--------------|---|-------------------|----------------|-------------------|----------------|
| FILE NAME = c:\p\work\p\dot\drivakosgn\d2188315\td1.dgn | USER NAME = drivakosgn | DESIGNED - DRAWN - CHECKED - DATE - | REVISIONS REVISED - T. RAMMACHER 09-19-94 REVISED - T. RAMMACHER 03-12-99 REVISED - T. RAMMACHER 01-06-00 REVISED - C. JUCIUS 09-09-09 | STATE OF ILLINOIS DEPARTMENT OF TRANSPORTATION | TYPICAL APPLICATIONS RAISED REFLECTIVE PAVEMENT MARKERS (SNOW-PLOW RESISTANT) | | | F.A.B. RTE. 351 | SECTION 536T-1 | COUNTY COOK | TOTAL SHEETS 8 | SHEET NO. 6 |
| PLOT SCALE = 50.000' / IN. PLOT DATE = 9/9/2009 | | | | | SCALE: NONE | SHEET NO. 1 OF 1 SHEETS | STA. TO STA. | TC-11 CONTRACT NO. 60162 FED. ROAD DIST. NO. 1 ILLINOIS FED. AID PROJECT | | | | |



2-LANE ROADWAY



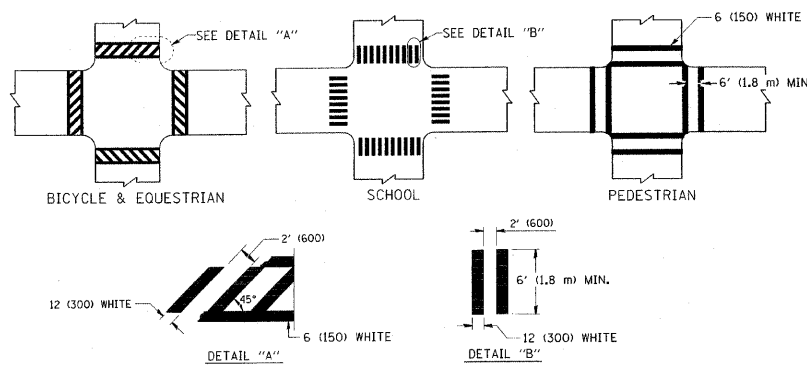
MULTI-LANE UNDIVIDED



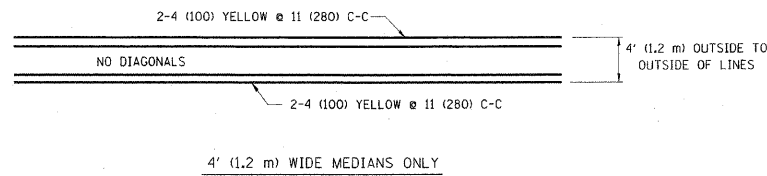
MULTI-LANE DIVIDED WITH MOUNTABLE MEDIAN

NOTE: MEDIANS WITH BARRIER CURB DO NOT REQUIRE AN EDGE LINE

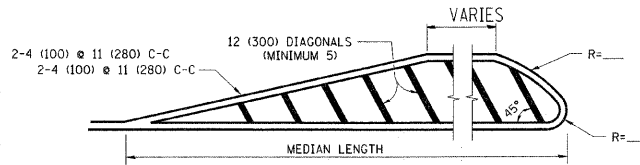
TYPICAL LANE AND EDGE LINE MARKING



TYPICAL CROSSWALK MARKING



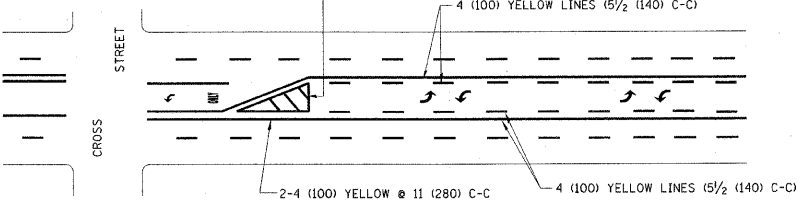
4' (1.2 m) WIDE MEDIANS ONLY



FOR MEDIAN LENGTHS WHERE DIAGONAL SPACING CANNOT BE ATTAINED, USE 5 (FIVE) EQUALLY SPACED DIAGONAL LINES.

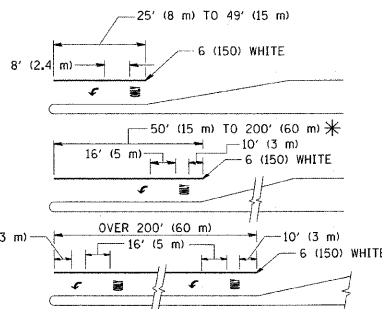
DIAGONAL LINE SPACING: 50' (15 m) C-C (LESS THAN 30MPH (50 km/h))
75' (25 m) C-C 30MPH (50 km/h) TO 45MPH (70 km/h)
150' (45 m) C-C (MORE THAN 45MPH (70 km/h))

MEDIANS OVER 4' (1.2 m) WIDE



MEDIAN WITH TWO-WAY LEFT TURN LANE

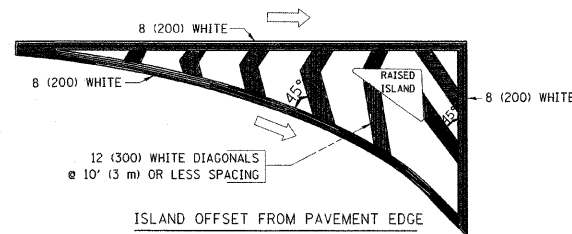
TYPICAL PAINTED MEDIAN MARKING



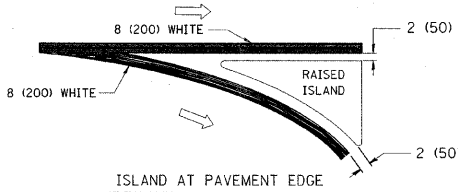
FULL SIZE LETTERS 8' (2.4 m) AND ARROWS SHALL BE USED.
AREA = 15.6 SQ. FT. (1.5 m²) ONLY AREA = 20.8 SQ. FT. (1.9 m²)
* TURN LANES IN EXCESS OF 400' (120 m) IN LENGTH MAY HAVE AN ADDITIONAL SET OF ARROW - "ONLY" INSTALLED MIDWAY BETWEEN THE OTHER TWO SETS OF ARROW - "ONLY".

TYPICAL LEFT (OR RIGHT) TURN LANE

TYPICAL TURN LANE MARKING



ISLAND OFFSET FROM PAVEMENT EDGE



ISLAND AT PAVEMENT EDGE

TYPICAL ISLAND MARKING

| TYPE OF MARKING | WIDTH OF LINE | PATTERN | COLOR | SPACING / REMARKS |
|---|--|---------------------------------|---|--|
| CENTERLINE ON 2 LANE PAVEMENT | 4 (100) | SKIP-DASH | YELLOW | 10' (3 m) LINE WITH 30' (9 m) SPACE |
| CENTERLINE ON MULTI-LANE UNDIVIDED PAVEMENT | 2 @ 4 (100) | SOLID | YELLOW | 11 (280) C-C |
| NO PASSING ZONE LINES: FOR ONE DIRECTION FOR BOTH DIRECTIONS | 4 (100) 2 @ 4 (100) | SOLID SOLID | YELLOW YELLOW | 5/2 (140) C-C FROM SKIP-DASH CENTERLINE 11 (280) C-C OMIT SKIP-DASH CENTERLINE BETWEEN |
| LANE LINES | 4 (100) 5 (125) ON FREEWAYS | SKIP-DASH SKIP-DASH | WHITE WHITE | 10' (3 m) LINE WITH 30' (9 m) SPACE |
| DOTTED LINES (EXTENSIONS OF CENTER, LANE OR TURN LANE MARKINGS) | SAME AS LINE BEING EXTENDED | SKIP-DASH | SAME AS LINE BEING EXTENDED | 2' (600) LINE WITH 6' (1.8 m) SPACE |
| EDGE LINES | 4 (100) | SOLID | YELLOW-LEFT WHITE-RIGHT | OUTLINE MOUNTABLE MEDIANS IN YELLOW; EDGE LINES ARE NOT USED NEXT TO BARRIER CURB |
| TURN LANE MARKINGS | 6 (150) LINE; FULL SIZE LETTERS & SYMBOLS (8' (2.4m)) | SOLID | WHITE | SEE TYPICAL TURN LANE MARKING DETAIL |
| TWO WAY LEFT TURN MARKING | 2 @ 4 (100) EACH DIRECTION 8' (2.4m) LEFT ARROW | SKIP-DASH AND SOLID IN PAIRS | YELLOW WHITE | 10' (3 m) LINE WITH 30' (9 m) SPACE FOR SKIP-DASH; 5/2 (140) C-C BETWEEN SOLID LINE AND SKIP-DASH LINE SEE TYPICAL TWO-WAY LEFT TURN MARKING DETAIL |
| CROSSWALK LINES (PEDESTRIAN) A. DIAGONALS (BIKE & EQUESTRIAN) B. LONGITUDINAL BARS (SCHOOL) | 2 @ 6 (150) 12 (300) @ 45° 12 (300) @ 90° | SOLID SOLID SOLID | WHITE WHITE WHITE | NOT LESS THAN 6' (1.8 m) APART 2' (600) APART 2' (600) APART SEE TYPICAL CROSSWALK MARKING DETAILS. |
| STOP LINES | 24 (600) | SOLID | WHITE | PLACE 4' (1.2 m) IN ADVANCE OF AND PARALLEL TO CROSSWALK. IF PRESENT, OTHERWISE, PLACE AT DESIRED STOPPING POINT, PARALLEL TO CROSSROAD CENTERLINE, WHERE POSSIBLE |
| PAINTED MEDIANS | 2 @ 4 (100) WITH 12 (300) DIAGONALS @ 45° NO DIAGONALS USED FOR 4' (1.2 m) WIDE MEDIANS | SOLID | YELLOW; TWO WAY TRAFFIC WHITE; ONE WAY TRAFFIC | 11 (280) C-C FOR THE DOUBLE LINE SEE TYPICAL PAINTED MEDIAN MARKING. |
| CORE MARKING AND CHANNELIZING LINES | 8 (200) WITH 12 (300) DIAGONALS @ 45° | SOLID | WHITE | DIAGONALS: 15' (4.5 m) C-C (LESS THAN 30MPH (50 km/h)) 20' (6 m) C-C 30MPH (50 km/h) TO 45MPH (70 km/h) 30' (9 m) C-C (OVER 45MPH (70 km/h)) |
| RAILROAD CROSSING | 24 (600) TRANSVERSE LINES; "RR" IS 6' (1.8 m) LETTERS; 16 (400) LINE FOR "X" | SOLID | WHITE | SEE STATE STANDARD 780001 AREA OF: "R"=3.6 SQ. FT. (0.33 m ²) EACH "X"=54.0 SQ. FT. (5.0 m ²) |
| SHOULDER DIAGONALS | 12 (300) @ 45° | SOLID | WHITE - RIGHT YELLOW - LEFT | 50' (15 m) C-C (LESS THAN 30MPH (50 km/h)) 75' (25 m) C-C (30 MPH (50 km/h) TO 45MPH (70 km/h)) 150' (45 m) C-C (OVER 45MPH (70 km/h)) |

FOR FURTHER DETAILS ON PAVEMENT MARKING REFER TO STANDARD SPECIFICATIONS FOR ROAD AND BRIDGE CONSTRUCTION AND STATE STANDARD 780001.

All dimensions are in inches (millimeters) unless otherwise shown.

| | | | |
|---|----------------------------|------------------|---------------------------------|
| FILE NAME = | USER NAME = drivakosgn | DESIGNED - EVERS | REVISED - T. RAMMACHER 10-27-94 |
| ct:\pw_work\p\widet\drivakosgn\d0100315\3.dgn | | DRAWN - | REVISED - C. JUCIUS 09-09-09 |
| | PLOT SCALE = 50.000 "/ IN. | CHECKED - | REVISED - |
| | PLOT DATE = 9/9/2009 | DATE - 03-19-90 | REVISED - |

STATE OF ILLINOIS
DEPARTMENT OF TRANSPORTATION

| | | | | | | |
|---------------------------|--|-------------------------|---------|----------|------------------|--------------------|
| DISTRICT ONE | | F.A.P. RTE. | SECTION | COUNTY | TOTAL SHEETS | SHEET NO. |
| TYPICAL PAVEMENT MARKINGS | | 351 | 536T-1 | COOK | 8 | 7 |
| SCALE: NONE | | SHEET NO. 1 OF 1 SHEETS | | STA. | TO STA. | |
| | | FED. ROAD DIST. NO. 1 | | ILLINOIS | FED. AID PROJECT | CONTRACT NO. 60162 |

ROUTE MARKERS

FOR U.S. ROUTES
M1-40-2424

FOR ILLINOIS ROUTES
M1-50-2424

R.R. UNMARKED ROUTES
SPECIAL 24" x 18" VARIABLE
4" BLACK LETTERS ON WHITE
REFLECTIVE BACKGROUND

ARROWS SIGNS

M5-1L-2115

M5-1R-2115

M6-1-2115

M6-1-2115

M6-3-2115

CARDINAL DIRECTION & DETOUR SIGNS

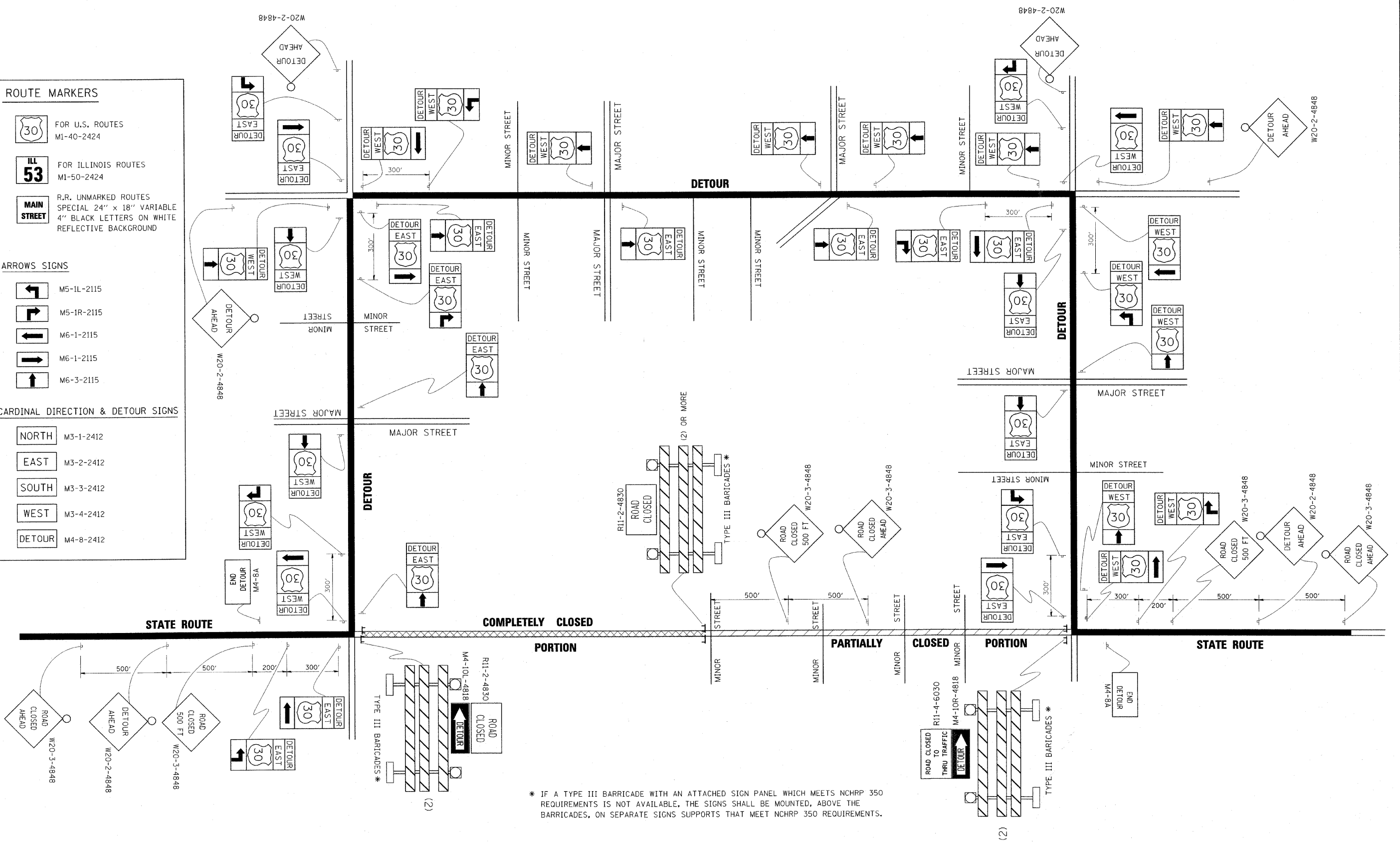
NORTH M3-1-2412

EAST M3-2-2412

SOUTH M3-3-2412

WEST M3-4-2412

DETOUR M4-8-2412



* IF A TYPE III BARRICADE WITH AN ATTACHED SIGN PANEL WHICH MEETS NCHRP 350 REQUIREMENTS IS NOT AVAILABLE, THE SIGNS SHALL BE MOUNTED, ABOVE THE BARRICADES, ON SEPARATE SIGNS SUPPORTS THAT MEET NCHRP 350 REQUIREMENTS.

| | | | |
|---|-----------------------------|------------|----------------------------|
| FILE NAME = | USER NAME = drivakosgn | DESIGNED - | REVISED - 10-18-02 |
| at:\pwwork\p\WIDOT\DRIVAKOSGN\d8108315\21.dgn | | DRAWN - | REVISED - R. BORO 09-14-09 |
| | PLOT SCALE = 49.9999" / IN. | CHECKED - | REVISED - |
| | PLOT DATE = 9/14/2009 | DATE - | REVISED - |

**STATE OF ILLINOIS
DEPARTMENT OF TRANSPORTATION**

| | | | |
|--|-------------|-------------|--------------|
| DETOUR SIGNING FOR CLOSING STATE HIGHWAYS | | | |
| SCALE: NONE | SHEET NO. 1 | OF 1 SHEETS | STA. TO STA. |

| | | | | |
|---|---------|--------|--------------------|-----------|
| F.A.P. RTE. | SECTION | COUNTY | TOTAL SHEETS | SHEET NO. |
| 351 | 536T-1 | COOK | 8 | 8 |
| TC-21 | | | CONTRACT NO. 60I62 | |
| FED. ROAD DIST. NO. 1 ILLINOIS FED. AID PROJECT | | | | |