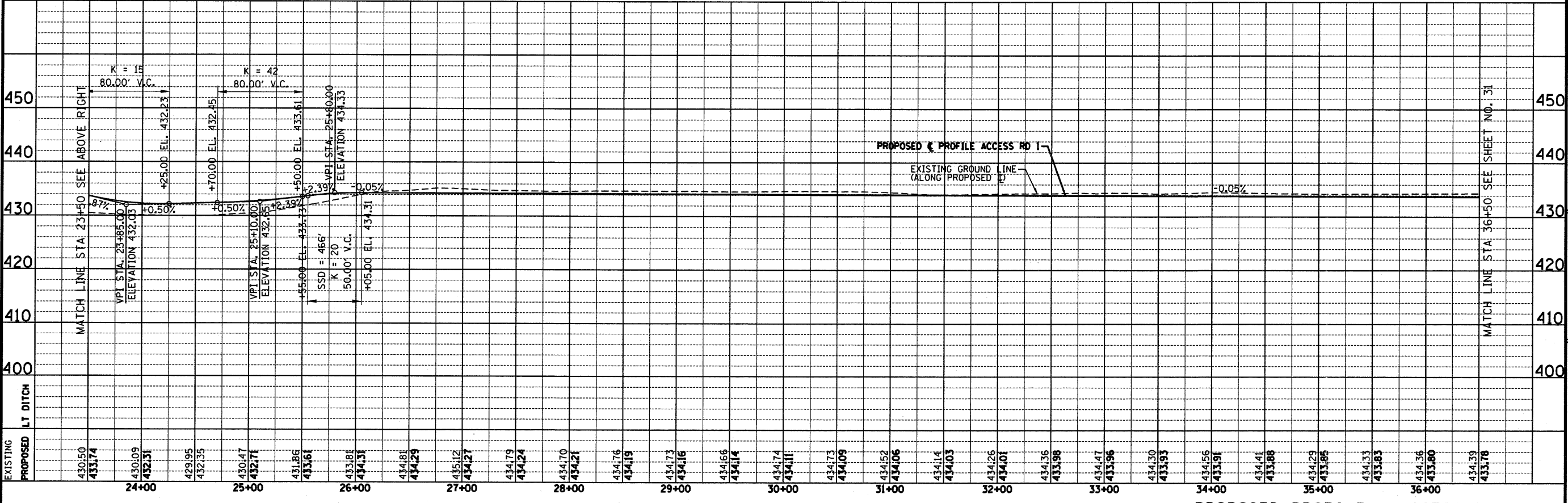


EXISTING PROPOSED
 417.65 418.81 416.73 417.45 416.51 416.80 416.30 416.64 417.26 416.50 416.61 416.50 408.56 416.79 417.13 417.43 419.21 419.53 426.91 423.06 424.63 424.91 422.85 423.60 421.08 421.19 420.08 420.03 419.73 420.11 419.88 420.38 419.60 420.64 419.83 420.90 420.34 421.16 419.41 421.43 422.06 421.69 421.87 422.85 422.07 425.82 426.46 429.69 433.07 433.49 435.75 435.16 430.50 433.74

PROPOSED PROFILE - ACCESS ROAD 1



EXISTING PROPOSED
 430.50 433.74 430.09 432.31 429.95 432.35 430.47 432.71 431.86 433.61 433.81 434.31 434.81 434.29 435.12 434.27 434.79 434.24 434.70 434.21 434.76 434.19 434.73 434.16 434.66 434.14 434.74 434.11 434.73 434.09 434.52 434.06 434.14 434.03 434.26 434.01 434.36 433.98 434.47 433.96 434.30 433.93 434.56 433.91 434.41 433.88 434.29 433.85 434.33 433.83 434.36 433.80 434.39 433.78

PROPOSED PROFILE - ACCESS ROAD 1

CONTRACT NO. 76D61

F.A. ROUTE	SECTION
999	82-1B-2
FED. AID PROJECT	ILLINOIS
COUNTY	ST. CLAIR
USER NAME = John Keeven	
PLOT SCALE = 50.0000' / IN.	
PLOT DATE = 4/14/2010	
DESIGNED -	HNTB
CHECKED -	CMT
DRAWN -	CMT / HNTB
REVISED -	
REVISED -	
REVISED -	
REVISED -	

**ROADWAY PROFILES
 ACCESS ROADS**

ILLINOIS APPROACH STRUCTURE
 FOR NEW I-70 MISSISSIPPI RIVER BRIDGE

STA 10 + 09.43 TO STA 36 + 50

STATE OF ILLINOIS
 DEPARTMENT OF TRANSPORTATION

MISSOURI HIGHWAYS
 AND TRANSPORTATION COMMISSION

HNTB
 715 KIRK DRIVE
 KANSAS CITY, MO 64105
 TELEPHONE (816) 472-1201
 CERTIFICATE OF AUTHORITY
 NO. 001270

CMT
 CRAWFORD, MURPHY & TILLY, INC.
 2750 WEST WASHINGTON STREET
 SPRINGFIELD, IL 62702
 TELEPHONE (217) 787-8050
 ENGINEERING CORPORATION - 000631

SHEET 30 OF 81