

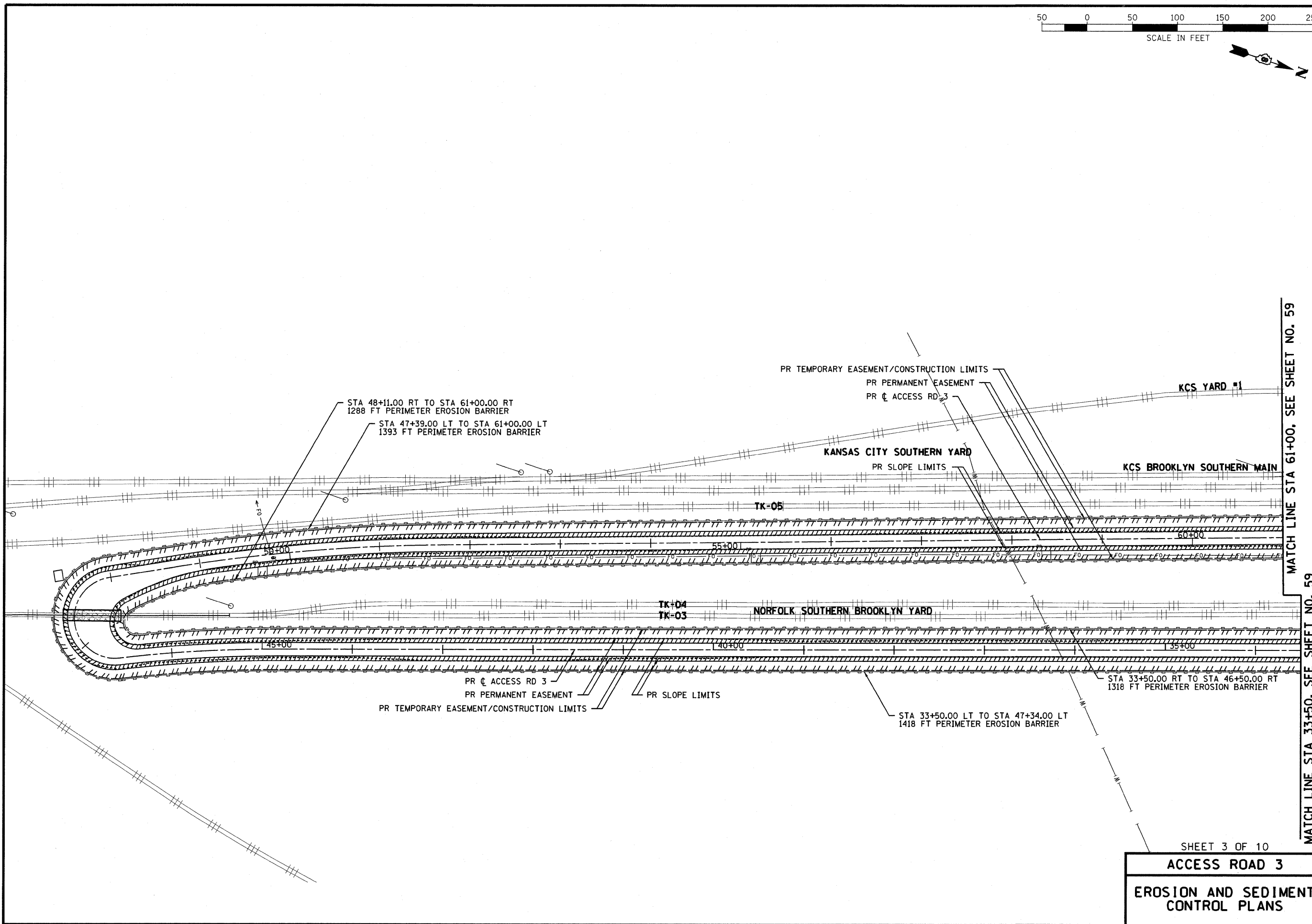
| | |
|-----------------------------|-----------|
| CONTRACT NO. 76D61 | |
| F.A. ROUTE | SECTION |
| 999 | 82-1B-2 |
| FED. AID PROJECT | ILLINOIS |
| COUNTY | ST. CLAIR |
| USER NAME = John Keeven | |
| PLOT SCALE = 50.0000' / IN. | |
| PLOT DATE = 4/14/2010 | |
| DESIGNED - HNTB | |
| CHECKED - CMT | |
| DRAWN - CMT / HNTB | |
| REVISED - | |
| REVISED - | |
| REVISED - | |
| REVISED - | |

| | |
|------------------------------------|---|
| EROSION AND SEDIMENT CONTROL PLANS | ILLINOIS APPROACH STRUCTURE FOR NEW I-70 MISSISSIPPI RIVER BRIDGE |
| | STA. 33+50 TO STA. 61+00 |

| | |
|---|--|
| STATE OF ILLINOIS DEPARTMENT OF TRANSPORTATION | MISSOURI HIGHWAYS AND TRANSPORTATION COMMISSION |
|---|--|

HNTB
715 KIRK DRIVE
KANSAS CITY, MO 64105
TELEPHONE (816) 472-1201
CERTIFICATE OF AUTHORITY
NO. 001270

CMT
CRANFORD, MURPHY & TILLY, INC.
2750 WEST WASHINGTON STREET
SPRINGFIELD, IL 62702
TELEPHONE (217) 787-8050
ENGINEERING CORPORATION - 000631



SHEET 3 OF 10
ACCESS ROAD 3
EROSION AND SEDIMENT CONTROL PLANS