

CONTRACT NO. 76D61	
F.A. ROUTE	SECTION
999	82-1B-2
FED. AID PROJECT	ILLINOIS
COUNTY	ST. CLAIR
USER NAME = jcolliff	
PLOT SCALE = #SCALE#	
PLOT DATE = 4/14/2010	
DESIGNED -	HNTB
CHECKED -	CMT
DRAWN -	CMT / HNTB
REVISED -	
REVISED -	
REVISED -	
REVISED -	

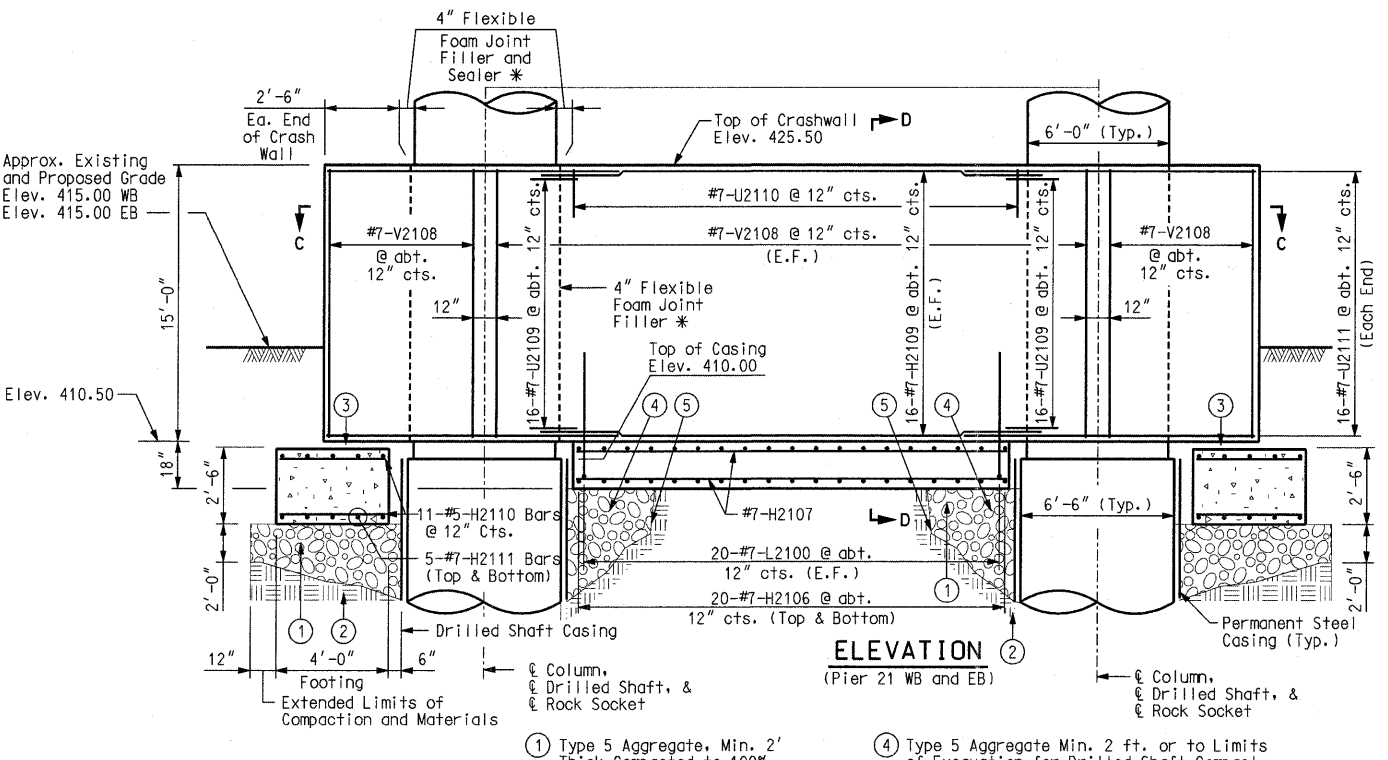
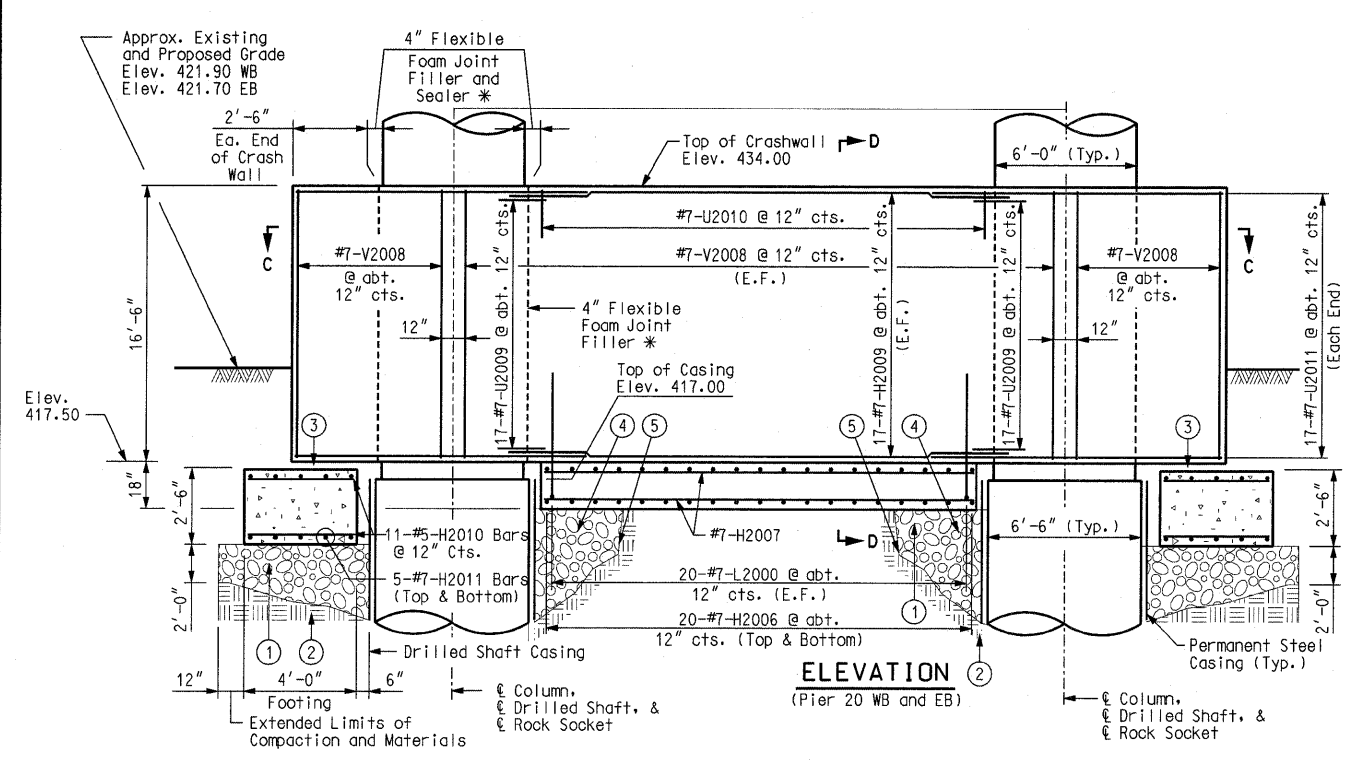
ILLINOIS APPROACH STRUCTURE
FOR NEW I-70 MISSISSIPPI RIVER BRIDGE

STATE OF ILLINOIS
DEPARTMENT OF TRANSPORTATION

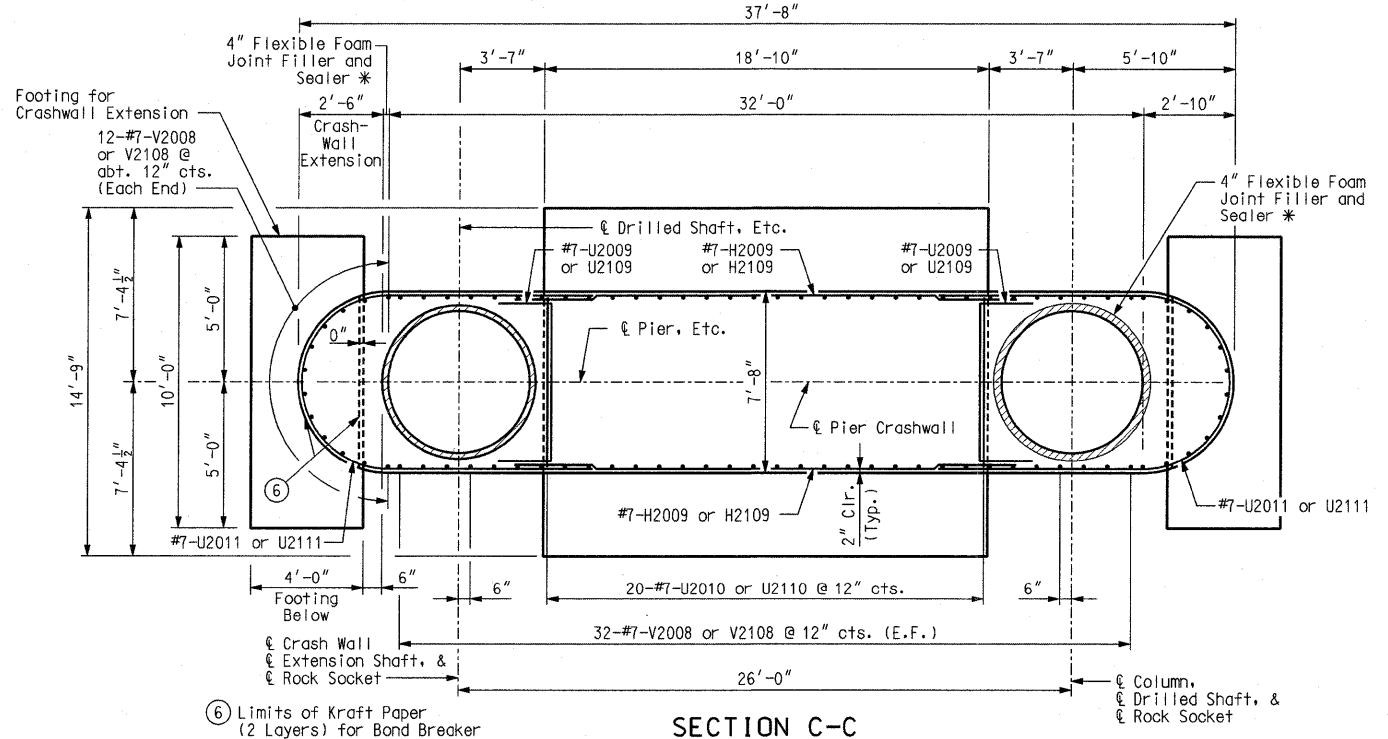
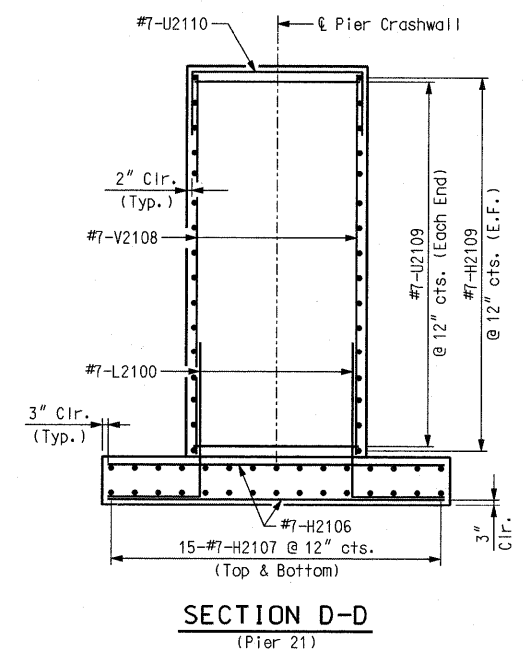
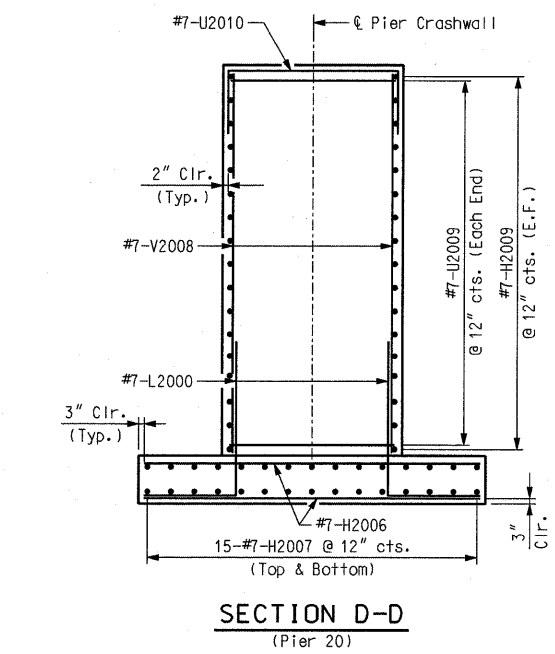
MISSOURI HIGHWAYS
AND TRANSPORTATION COMMISSION

HNTB
715 KIRK DRIVE
KANSAS CITY, MO 64105
TELEPHONE (816) 472-1201
CERTIFICATE OF AUTHORITY
NO. 001270

CMT
CRAWFORD, MURPHY & TILLY, INC.
2750 WEST WASHINGTON STREET
SPRINGFIELD, IL 62702
TELEPHONE (217) 787-8050
ENGINEERING CORPORATION - 000631



- ① Type 5 Aggregate, Min. 2' Thick Compacted to 100% Std. Proctor Density in Accordance with ASTM D698
- ② Compact Existing Subgrade to 100% Std. Proctor Density in Accordance with ASTM D698
- ③ 2 Layers of Kraft Paper (Bond Breaker) Full Contact Surface of End Crash Wall
- ④ Type 5 Aggregate Min. 2 ft. or to Limits of Excavation for Drilled Shaft-Compact to 100% Std. Proctor Density in Accordance with ASTM D698
- ⑤ Limits of Excavation for Drilled Shaft-Compact to 100% Std. Proctor Density in Accordance with ASTM D698



Notes:
For Pier details and quantities, see Sheet Nos. 31, 32, 33, and 34.
* The 4" flexible foam joint filler shall be installed the full height of the interface between the crashwall and columns and shall be in accordance with IDOT Standard Specification Art. 1051.09. The joint filler shall be compatible with sealer meeting the requirements of IDOT Standard Specification Art. 1050.02. The cost of the 4" flexible foam joint filler and sealer shall be included in the total cost of Class B Concrete (Substructure).

PIER CRASHWALL DETAIL SHEET

Detailed JUL 2009
Checked JUL 2009

Note: This drawing is not to scale. Follow dimensions. Sheet No. 35 of 152