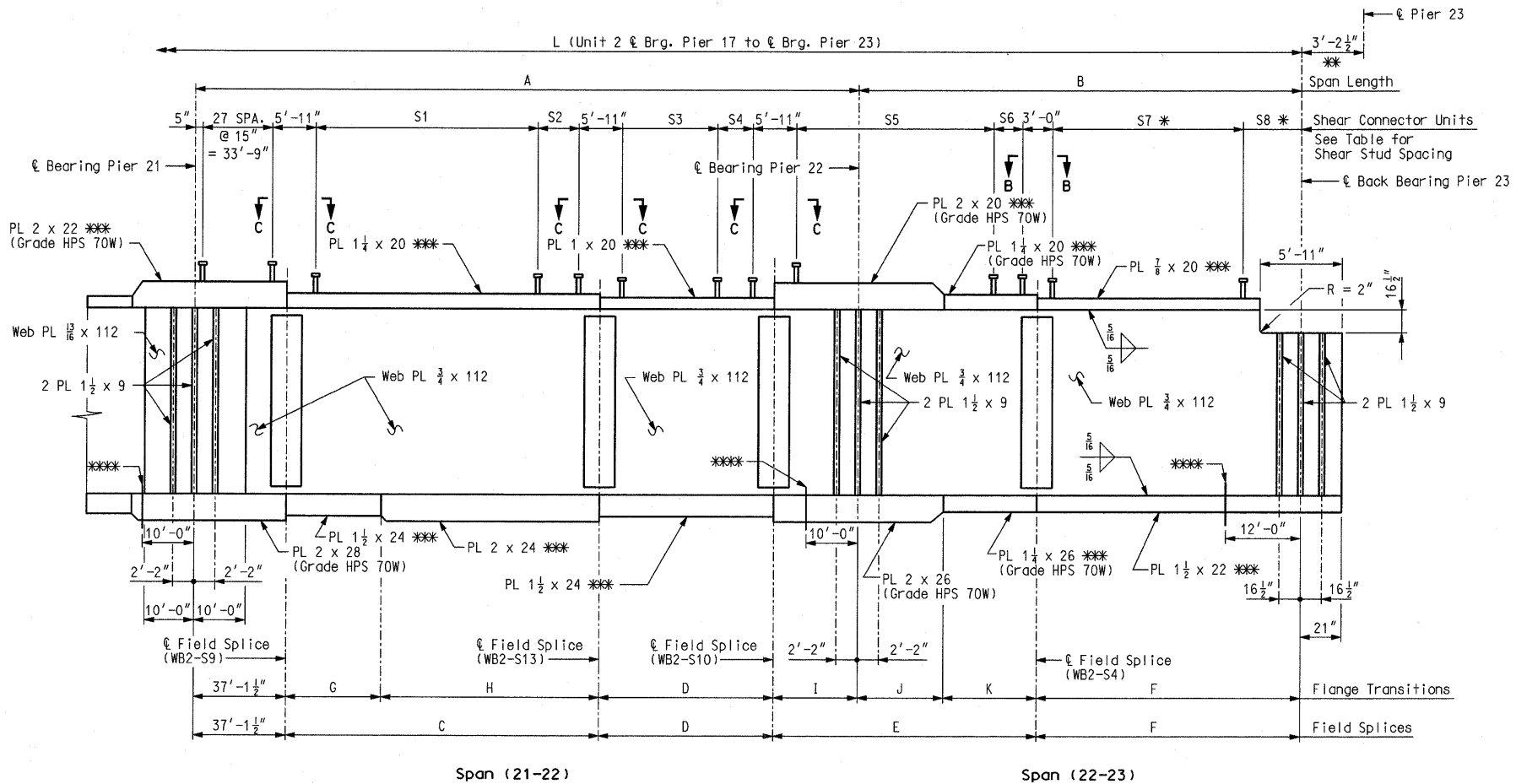
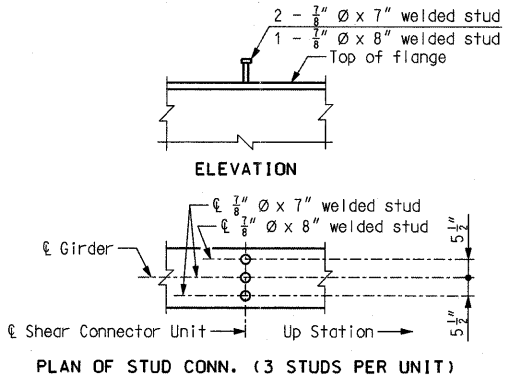


CONTRACT NO. 76D61	
F.A. ROUTE	SECTION
999	82-1B-2
FED. AID PROJECT ILLINOIS	
COUNTY	ST. CLAIR
USER NAME = jjo11ff	
PLOT SCALE = #SCALE#	
PLOT DATE = 4/14/2010	
DESIGNED -	HNTB
CHECKED -	CMT
DRAWN -	CMT / HNTB
REVISED -	
REVISED -	
REVISED -	
REVISED -	



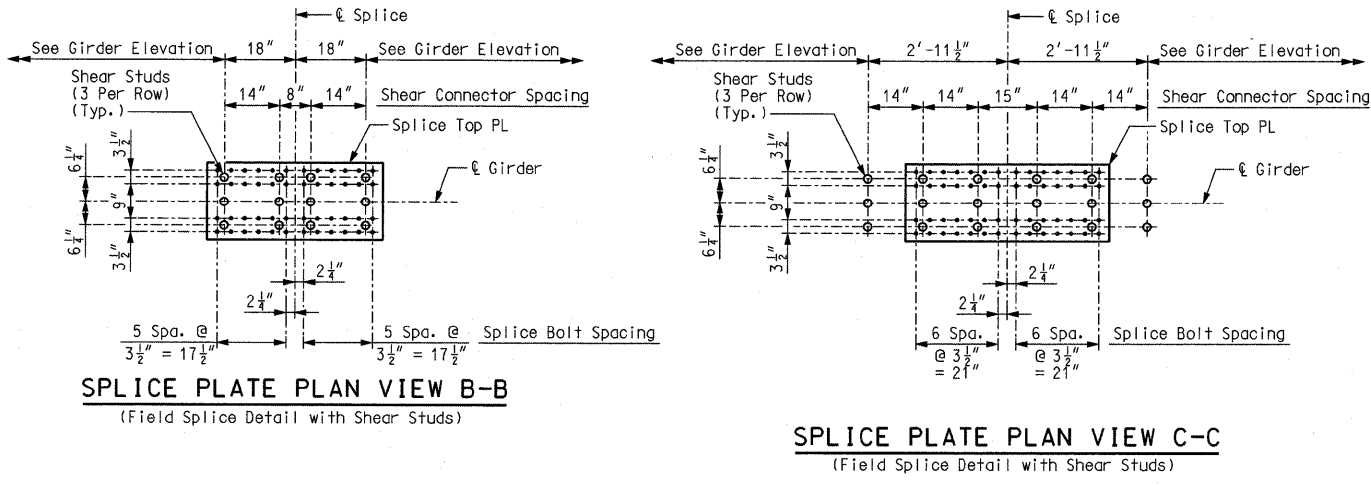
SHEAR STUD SPACING								
Location	S1	S2	S3	S4	S5	S6	S7 *	S8 *
Girder 1	94 Spa. @ 16" = 125'-4"	16 3/8"	48 Spa. @ 16" = 64'-0"	17 3/8"	82 Spa. @ 15" = 102'-6"	11 1/8"	111 Spa. @ 14" = 129'-6"	4'-5 5/8"
Girder 2	94 Spa. @ 16" = 125'-4"	7"	48 Spa. @ 16" = 64'-0"	12 3/4"	81 Spa. @ 15" = 101'-3"	18 1/2"	110 Spa. @ 14" = 128'-4"	4'-10 1/8"
Girder 3	93 Spa. @ 16" = 124'-0"	13 5/8"	48 Spa. @ 16" = 64'-0"	7 3/4"	81 Spa. @ 15" = 101'-3"	10 3/8"	109 Spa. @ 14" = 127'-2"	5'-2 1/4"
Girder 4	92 Spa. @ 16" = 122'-8"	20 1/8"	47 Spa. @ 16" = 62'-8"	18 3/4"	80 Spa. @ 15" = 100'-0"	18 1/4"	109 Spa. @ 14" = 127'-2"	4'-4 1/2"



*** DETAILS OF SHEAR CONNECTORS FOR S7 AND S8**

For total weight of shear connectors, see Sheet No. 88.
Shear connectors shall be in accordance with Sec 712, 1037, and 1080.

- Notes:
- * Back Bearing is measured parallel to Bearing Pier 23.
 - Plate girders shall be fabricated to be in accordance with the camber diagram shown on Sheet No. 72.
 - *** Indicates flange plates subject to notch toughness requirements. All web plates shall be subject to notch toughness requirements. All flange and web splice plates except fill plates shall be subject to notch toughness requirement.
 - Fabricated structural steel shall be ASTM A709 Grade 50W, except as noted.
 - Longitudinal dimensions are horizontal arc dimensions from bearing to bearing.
 - For Framing Plan, see Sheet No. 51.
 - For location of slab drain attachment holes, see slab drain details on Sheet Nos. 127 thru 130.
 - For detail of expansion device stiffener at Pier 23, see Sheet No. 88.
 - *** Drip plate, girder 1 only. See Sheet No. 88 for details.
 - For table of Girder Dimensions, see Sheet No. 51.
 - For details of shear connectors not shown, see Sheet No. 88.



GIRDER ELEVATION WB - UNIT 2 (3 OF 3)

Detailed JUL 2009
Checked JUL 2009

Note: This drawing is not to scale. Follow dimensions. Sheet No. 60 of 152

STATE OF ILLINOIS
DEPARTMENT OF TRANSPORTATION
MISSOURI HIGHWAYS
AND TRANSPORTATION COMMISSION

ILLINOIS APPROACH STRUCTURE
FOR NEW I-70 MISSISSIPPI RIVER BRIDGE

HNTB
715 KIRK DRIVE
KANSAS CITY, MO 64105
TELEPHONE (816) 472-1201
CERTIFICATE OF AUTHORITY
NO. 001270

CMT
CRAWFORD, MURPHY & TILLY, INC.
2750 WEST WASHINGTON STREET
SPRINGFIELD, IL 62702
TELEPHONE (217) 787-8050
ENGINEERING CORPORATION - 000631