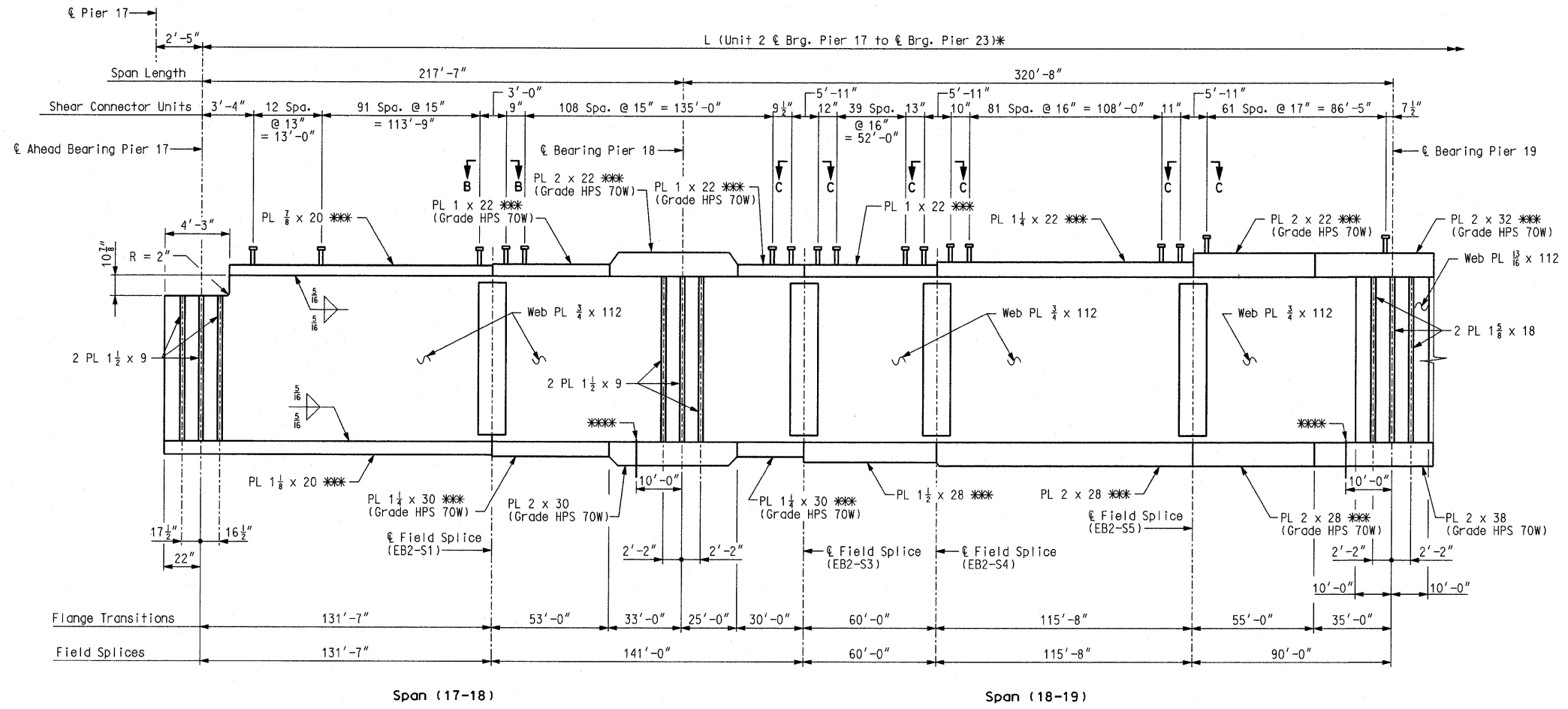
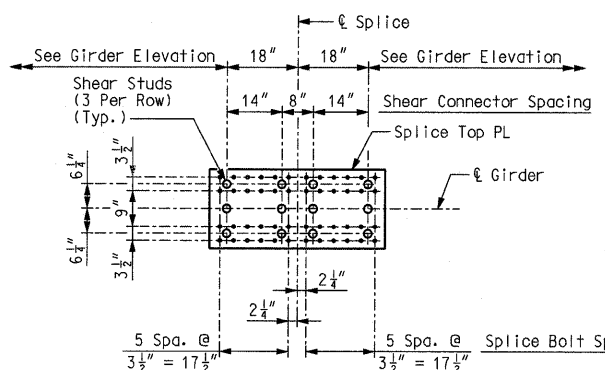


F.A. ROUTE	SECTION
999	82-1B-2
FED. AID PROJECT	ILLINOIS
COUNTY	ST. CLAIR

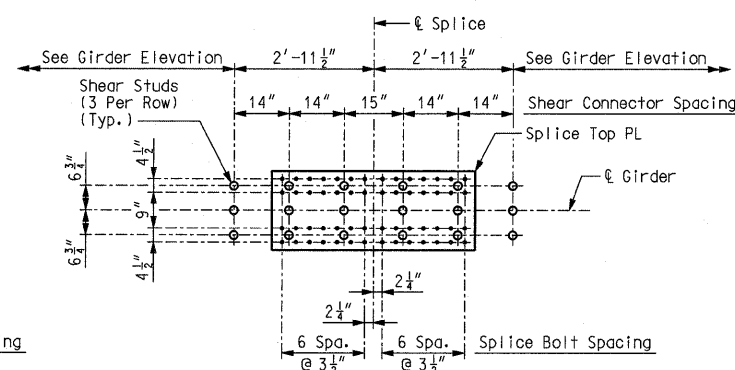
USER NAME = Jje11ff
PLOT SCALE = #SCALE#
PLOT DATE = 4/14/2010
DESIGNED - HNTB
CHECKED - CMT
DRAWN - CMT / HNTB
REVISED -
REVISED -
REVISED -
REVISED -



**GIRDER ELEVATION**  
Spans (17-18) & (18-19)



**SPLICE PLATE PLAN VIEW B-B**  
(Field Splice Detail with Shear Studs)



**SPLICE PLATE PLAN VIEW C-C**  
(Field Splice Detail with Shear Studs)

- Notes:
- \* For Table of Dimensions, see Sheet No. 53.
  - \* All dimensions measured along  $\ell$  Relocated I-70.
  - \* Plate girders shall be fabricated to be in accordance with the camber diagram shown on Sheet No. 73.
  - \*\*\* Indicates flange plates subject to notch toughness requirements.
  - \*\*\* All web plates shall be subject to notch toughness requirements.
  - \*\*\* All flange and web splice plates except fill plates shall be subject to notch toughness requirements.
  - \*\*\* Fabricated structural steel shall be ASTM A709 Grade 50W, except as noted.
  - \*\*\* Longitudinal dimensions are horizontal from  $\ell$  bearing to  $\ell$  bearing.
  - \*\*\* For Framing Plan, see Sheet No. 52.
  - \*\*\* For location of slab drain attachment holes, see slab drain details on Sheet Nos. 127 thru 130.
  - \*\*\* For detail of expansion device stiffener at Pier 17, see Sheet No. 88.
  - \*\*\* Drip plate, girder 8 only. See Sheet No. 88 for details.
  - \*\*\* For details of shear connectors, see Sheet No. 88.

ILLINOIS APPROACH STRUCTURE FOR NEW I-70 MISSISSIPPI RIVER BRIDGE

STATE OF ILLINOIS  
DEPARTMENT OF TRANSPORTATION  
MISSOURI HIGHWAYS  
AND TRANSPORTATION COMMISSION

**HNTB**  
715 KIRK DRIVE  
KANSAS CITY, MO 64105  
TELEPHONE (816) 472-1201  
CERTIFICATE OF AUTHORITY  
NO. 001270

**CMT**  
CRAWFORD, MURPHY & TILLY, INC.  
2750 WEST WASHINGTON STREET  
SPRINGFIELD, IL 62702  
TELEPHONE (217) 787-8050  
ENGINEERING CORPORATION - 000631