

|                     |          |                    |              |           |
|---------------------|----------|--------------------|--------------|-----------|
| F.A.P. RTE.         | SECTION  | COUNTY             | TOTAL SHEETS | SHEET NO. |
| 307                 | 541 RS-2 | COOK               | 29           | 1         |
| FED. ROAD DIST. NO. | ILLINOIS | CONTRACT NO. 60G77 |              |           |

STATE OF ILLINOIS  
DEPARTMENT OF TRANSPORTATION  
DIVISION OF HIGHWAYS

# PROPOSED HIGHWAY PLANS

**F.A.P. ROUTE 307 (IL RTE. 64 – NORTH AVE.)  
DUPAGE CO. LINE TO IL 43 (HARLEM AVE.)  
SECTION: 541 RS-2  
RESURFACING IMPROVEMENT  
COOK COUNTY  
C-91-533-09**

FOR INDEX OF SHEETS, SEE SHEET NO. 2

IMPROVEMENT LOCATED IN THE CITIES AND  
VILLAGES OF :

|              |              |
|--------------|--------------|
| NORTHLAKE    | ELMWOOD PARK |
| MELROSE PARK | RIVER FOREST |
| STONE PARK   | OAK PARK     |
| RIVER GROVE  |              |

**TRAFFIC DATA**

IL RTE. 64 (F.A.I. – 290 TO THATCHER AVE.)  
ADT (2006) = 52,900 VEHICLES

IL RTE. 64 (THATCHER AVE. TO IL RTE. 43)  
ADT (2006) = 35,000 VEHICLES

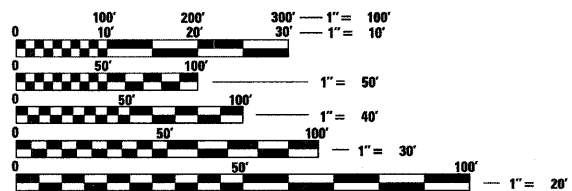
**SPEED LIMIT**

IL RTE. 64 (F.A.I. – 290 TO THATCHER AVE.) = 40 MPH

IL RTE. 64 (THATCHER AVE. TO IL RTE. 43) = 30 MPH

**STATION EQUATIONS**

STA. 274 + 41 BACK = STA. 77 + 69 AHEAD  
STA. 118 + 00 BACK = STA. 119 + 64 AHEAD  
STA. 141 + 16 BACK = STA. 139 + 16 AHEAD



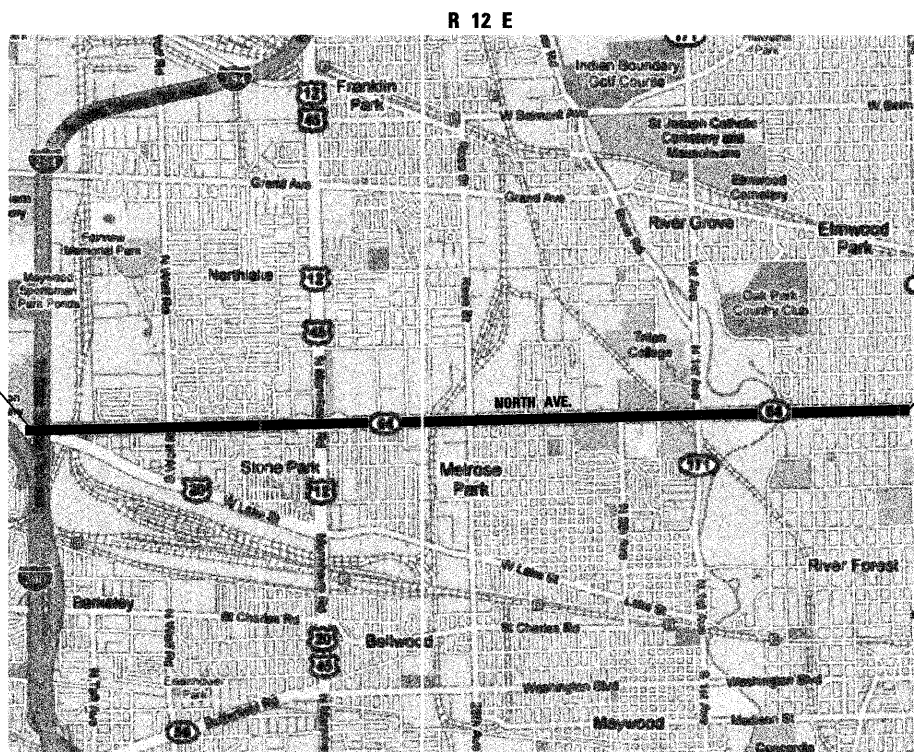
FULL SIZE PLANS HAVE BEEN PREPARED USING STANDARD ENGINEERING SCALES. REDUCED SIZED PLANS WILL NOT CONFORM TO STANDARD SCALES. IN MAKING MEASUREMENTS ON REDUCED PLANS, THE ABOVE SCALES MAY BE USED.

J.U.L.I.E.  
JOINT UTILITY LOCATION INFORMATION FOR EXCAVATION  
1-800-892-0123  
OR 811

**benesch**  
alfred benesch & company  
Engineers • Surveyors • Planners  
205 North Michigan Avenue, Suite 2400  
Chicago, Illinois 60601  
312-565-0450

CONTRACT NO. 60G77

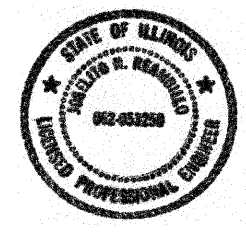
CONSULTANT PROJECT ENGINEER: ISSAM RAYYAN (847) 705-4556



PROJECT BEGINS  
STA. 52 + 00

PROJECT ENDS  
STA. 164 + 60

EXPIRATION DATE 11-30-09  
DATE 4-16-09



**OMISSION**  
STA. 130 + 40 TO STA. 135 + 25  
STA. 79 + 85 TO STA. 93 + 80

STATE OF ILLINOIS  
DEPARTMENT OF TRANSPORTATION  
DIVISION OF HIGHWAYS

SUBMITTED APRIL 16, 2009

Diana M. O'Hea  
DEPUTY DIRECTOR OF HIGHWAYS, REGION ENGINEER

May 1, 2009  
Charles J. Ingersoll  
ENGINEER OF DESIGN AND ENVIRONMENT

May 1, 2009  
Christina M. Reed  
DIRECTOR OF HIGHWAYS, CHIEF ENGINEER

**PRINTED BY THE AUTHORITY  
OF THE STATE OF ILLINOIS**

GROSS LENGTH OF IMPROVEMENT = 30,968 FEET OR 5.865 MILES  
NET LENGTH OF IMPROVEMENT = 29,088 FEET OR 5.509 MILES