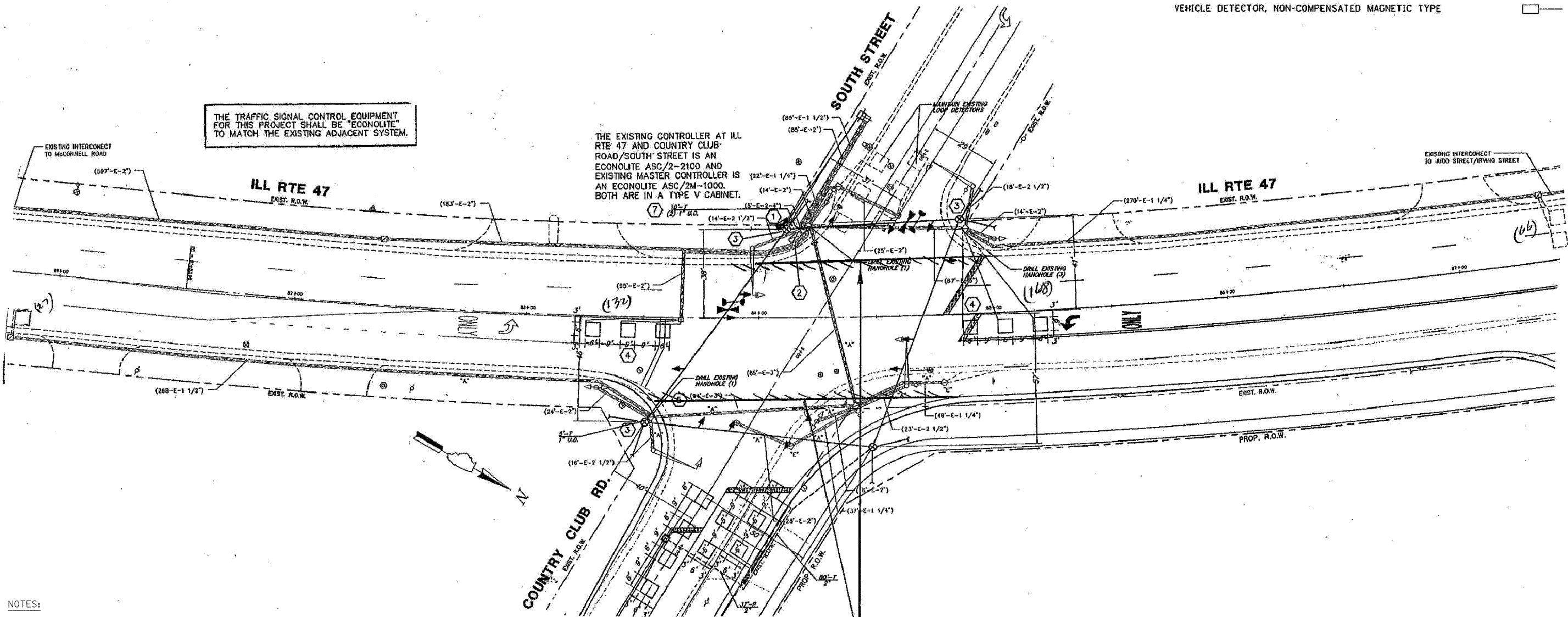


TRAFFIC SIGNAL LEGEND

	PROPOSED	EXISTING
DETECTOR LOOP		
SIGNAL HEAD		
G.S. CONDUIT IN TRENCH OR PUSHED		
SIGNAL HEAD WITH BACKPLATE		
RACEWAY FOR MAGNETIC DETECTOR, TYPE I OR II		
VEHICLE DETECTOR, NON-COMPENSATED MAGNETIC TYPE		



THE TRAFFIC SIGNAL CONTROL EQUIPMENT FOR THIS PROJECT SHALL BE "ECONOLITE" TO MATCH THE EXISTING ADJACENT SYSTEM.

THE EXISTING CONTROLLER AT ILL RTE 47 AND COUNTRY CLUB ROAD/SOUTH STREET IS AN ECONOLITE ASC/2-2100 AND EXISTING MASTER CONTROLLER IS AN ECONOLITE ASC/2M-1000. BOTH ARE IN A TYPE V CABINET.

- NOTES:
1. THIS PLAN IS FOR THE SOLE PURPOSE OF DETECTOR LOOP REPLACEMENTS ONLY.
 2. REPLACE ALL DETECTOR LOOPS AS SHOWN WITHIN THE RESURFACING LIMITS.
 3. ALL DETECTOR LOOPS ARE 6' X 6' UNLESS OTHERWISE SHOWN.
 4. AS-BUILT PLAN SHEETS PROVIDED BY IDOT HAVE BEEN INCLUDED FOR BIDDING PURPOSES ONLY, AND DO NOT NECESSARILY REFLECT ACTUAL FIELD CONDITIONS. PROPOSED DETECTOR LOOPS SHALL BE REPLACED AT ALL EXISTING LOCATIONS WITHIN THE PROJECT LIMITS, IN ACCORDANCE WITH STANDARD TS-07, SPECIAL PROVISIONS, AND AS DIRECTED BY THE ENGINEER.

THIS PLAN IS FOR THE SOLE PURPOSE OF DETECTOR LOOP REPLACEMENTS ONLY

REPLACE ALL DETECTOR LOOPS AS SHOWN (WITHIN THE RESURFACING LIMITS)

FILE NAME = ...SignalPlan_Asbuilt.dgn	USER NAME = Plotted by Administrator	DESIGNED -	REVISED -	STATE OF ILLINOIS DEPARTMENT OF TRANSPORTATION	DETECTOR LOOP PLAN - SOUTH STREET & COUNTRY CLUB ROAD IL ROUTE 47 FROM IL ROUTE 176 TO IL ROUTE 120	F.A.P. RTE. 326	SECTION 105 RS-9	COUNTY McHENRY	TOTAL SHEETS 37	SHEET NO. 19
	PLOT SCALE = 25,0000 "/>									