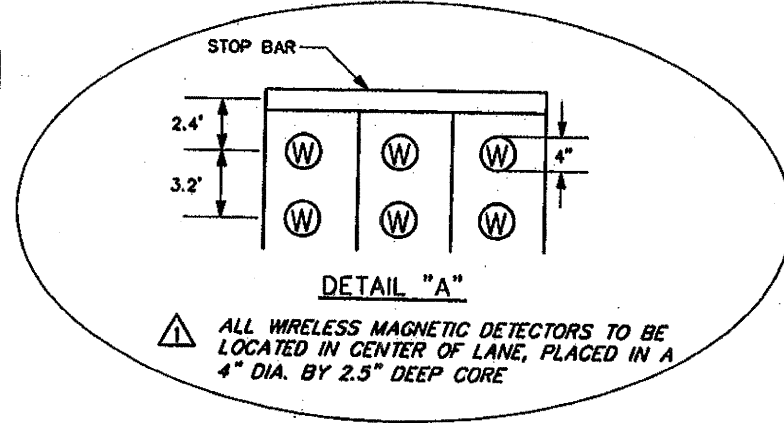
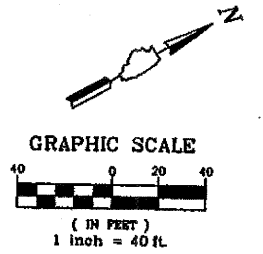


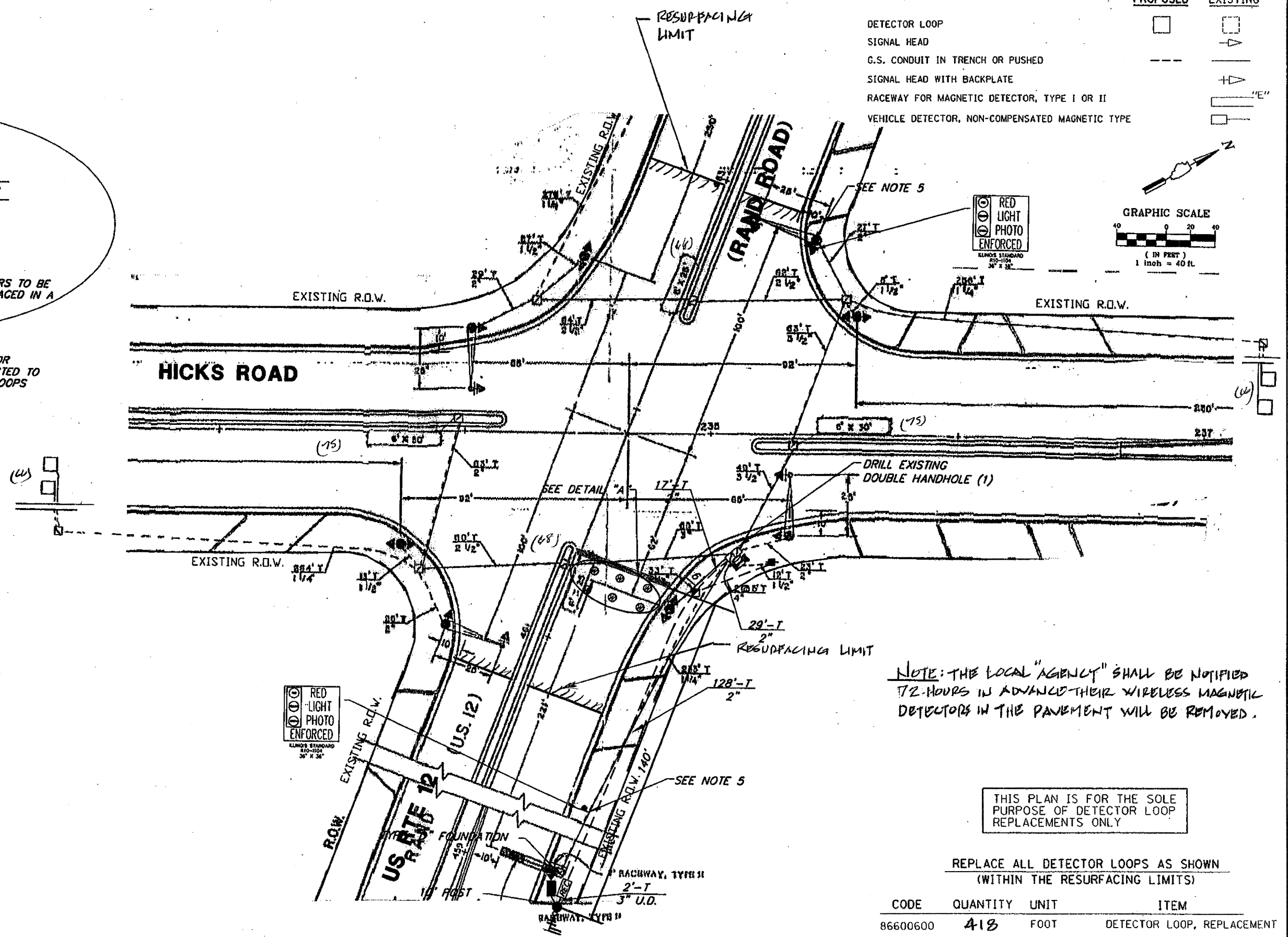
TRAFFIC SIGNAL LEGEND

	PROPOSED	EXISTING
DETECTOR LOOP		
SIGNAL HEAD		
G.S. CONDUIT IN TRENCH OR PUSHED		
SIGNAL HEAD WITH BACKPLATE		
RACEWAY FOR MAGNETIC DETECTOR, TYPE I OR II		
VEHICLE DETECTOR, NON-COMPENSATED MAGNETIC TYPE		



▲ ALL WIRELESS MAGNETIC DETECTORS TO BE LOCATED IN CENTER OF LANE, PLACED IN A 4" DIA. BY 2.5" DEEP CORE

▲ WIRELESS MAGNETIC DETECTOR LOCATIONS SHALL BE ADJUSTED TO AVOID EXISTING DETECTOR LOOPS



NOTE: THE LOCAL "AGENCY" SHALL BE NOTIFIED 72 HOURS IN ADVANCE THEIR WIRELESS MAGNETIC DETECTORS IN THE PAVEMENT WILL BE REMOVED.

THIS PLAN IS FOR THE SOLE PURPOSE OF DETECTOR LOOP REPLACEMENTS ONLY

REPLACE ALL DETECTOR LOOPS AS SHOWN (WITHIN THE RESURFACING LIMITS)

CODE	QUANTITY	UNIT	ITEM
86600600	418	FOOT	DETECTOR LOOP, REPLACEMENT

FILE NAME =
c:\p\work\p\WIDOT\MANTHAPHIXAYBC\01126

USER NAME = karthepixaybc
4\traffic.legend.v7.dgn
PLOT SCALE = 3/4" = 1' IN.
PLOT DATE = 4/3/2009

DESIGNED - BCK
DRAWN - BCK
CHECKED - DAD
DATE

REVISED -
REVISED -
REVISED -
REVISED -

STATE OF ILLINOIS
DEPARTMENT OF TRANSPORTATION

DISTRICT ONE - DETECTOR LOOP REPLACEMENT
HICKS ROAD @ U.S. ROUTE 12 (RAND RD.)

SCALE: NONE SHEET NO. OF SHEETS STA. TO STA.

F.A. RTE.	SECTION	COUNTY	TOTAL SHEETS	SHEET NO.
2592	531 RS-2	COOK	26	13

CONTRACT NO.