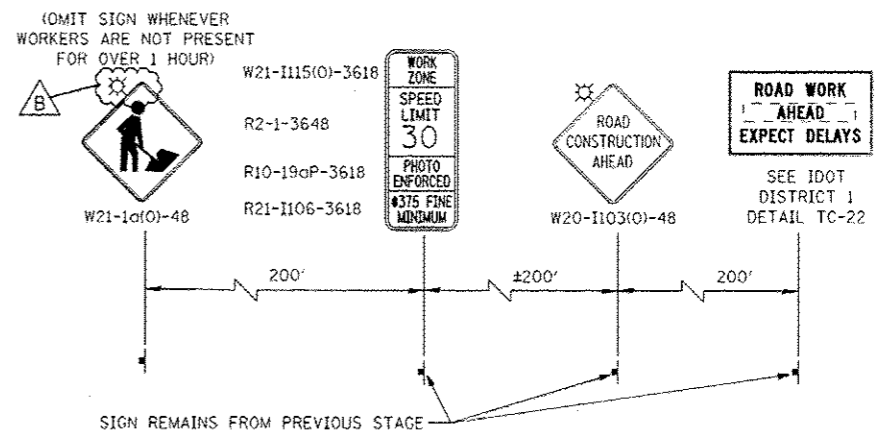
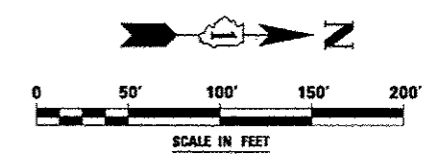


- MOT PAVEMENT MARKING LEGEND**
- (A) TEMPORARY PAVEMENT MARKING - LINE 4", SOLID WHITE
 - (B) TEMPORARY PAVEMENT MARKING - LINE 4", WHITE SKIP-DASH (10' LINE - 30' SPACE)
 - (C) TEMPORARY PAVEMENT MARKING - LINE 4", SOLID YELLOW
 - (D) TEMPORARY PAVEMENT MARKING - LINE 4", DOUBLE YELLOW SPACED AT 11" C-C WITH TEMPORARY RAISED REFLECTIVE PAVEMENT MARKERS SPACED 40' C-C (BI-DIRECTIONAL AMBER)
 - (E) TEMPORARY PAVEMENT MARKING - LINE 6", SOLID WHITE
 - (F) TEMPORARY PAVEMENT MARKING - LINE 6", WHITE DOTTED (2' LINE - 6' SPACE) (UNLESS OTHERWISE NOTED)
 - (G) TEMPORARY PAVEMENT MARKING - LINE 12", SOLID YELLOW
 - (H) TEMPORARY PAVEMENT MARKING - LINE 24", SOLID WHITE
 - (I) TEMPORARY PAVEMENT MARKING, LETTERS & SYMBOLS
 - (J) WET REFLECTIVE TEMPORARY TAPE, TYPE III, 4", SOLID WHITE
 - (K) WET REFLECTIVE TEMPORARY TAPE, TYPE III, 4", WHITE SKIP-DASH (10' LINE - 30' SPACE)
 - (L) WET REFLECTIVE TEMPORARY TAPE, TYPE III, 4", SOLID YELLOW
 - (M) WET REFLECTIVE TEMPORARY TAPE, TYPE III, 4", DOUBLE YELLOW SPACED AT 11" C-C WITH TEMPORARY RAISED REFLECTIVE PAVEMENT MARKERS SPACED 40' C-C (BI-DIRECTIONAL AMBER)
 - (N) WET REFLECTIVE TEMPORARY TAPE, TYPE III, 6", SOLID WHITE
 - (O) WET REFLECTIVE TEMPORARY TAPE, TYPE III, 6", WHITE DOTTED (2' LINE - 6' SPACE) (UNLESS OTHERWISE NOTED)
 - (P) WET REFLECTIVE TEMPORARY TAPE, TYPE III, 12", SOLID YELLOW
 - (R) WET REFLECTIVE TEMPORARY TAPE, TYPE III, 24", SOLID WHITE
 - (S) WET REFLECTIVE TEMPORARY TAPE, TYPE III, LETTERS & SYMBOLS

- LEGEND**
- CONSTRUCTION WORK ZONE
 - TEMPORARY PAVEMENT PLACED IN THIS STAGE
 - DIRECTION OF TRAFFIC
 - CHANNELIZATION DRUM WITH STEADY BURNING LIGHT (SEE MAINTENANCE OF TRAFFIC NOTE 33)
 - CHANNELIZATION DRUM WITH STEADY BURNING LIGHT
 - TEMPORARY CONCRETE BARRIER
 - VERTICAL PANEL WITH STEADY BURNING LIGHT
 - SIGN
 - TYPE III BARRICADE LOCATION
 - FLASHING YELLOW LIGHT



ADVANCE SIGNING FOR BROOKDALE ROAD
(SPACING MAY VARY DUE TO FIELD CONDITIONS)

DESIGNED <i>PJD</i>	REVISED - ADDENDUM B 05/01/2013	STATE OF ILLINOIS DEPARTMENT OF TRANSPORTATION	MAINTENANCE OF TRAFFIC - STAGE 1C ILLINOIS ROUTE 59 - BRUCE LN./BROOKDALE RD.	F.A.P. RTE.	SECTION	COUNTY	TOTAL SHEETS	SHEET NO.	
DRAWN <i>KES</i>	REVISED -			336	(112 & 113) WRS-6	DUPAGE	734	122	
CHECKED <i>JCH</i>	REVISED -			CONTRACT NO. 60R31			ILLINOIS FED. AID PROJECT		
DATE <i>12/14/2012</i>	REVISED -			SCALE: AS SHOWN	SHEET NO. 53 OF 117 SHEETS	STA. 4010+00	TO STA. 4018+00		