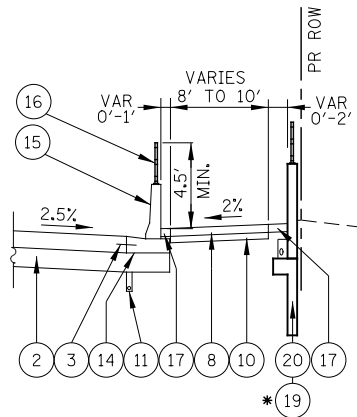
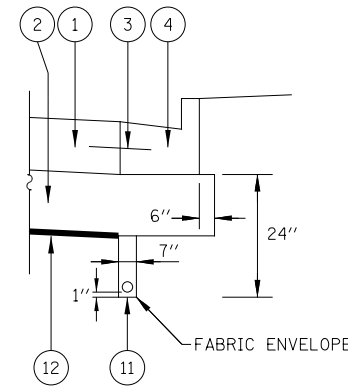


SLEEPER SLAB AT SIDEROADS AND COMMERCIAL ENTRANCE INTERSECTIONS



EDGE OF PAVEMENT WITH CONCRETE BARRIER WALL (SPECIAL)

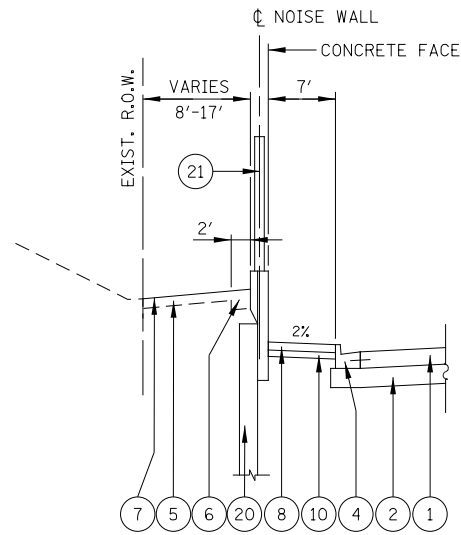
* STA. 4019+00 TO STA. 4023+05
 STA. 4024+43 TO STA. 4030+39
 STA. 4036+42 TO STA. 4039+80



PIPE UNDERDRAIN, FABRIC LINED TRENCH 4''

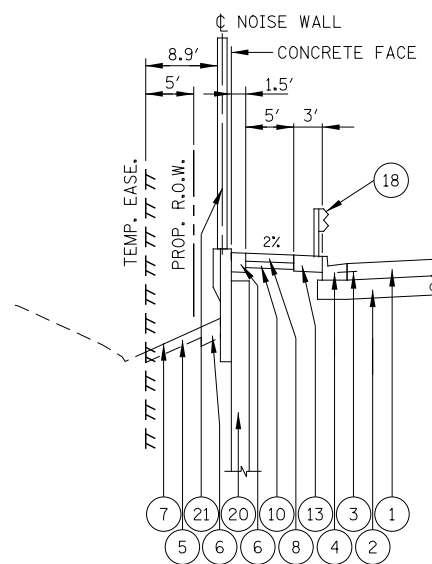
LEGEND:

- 1 PORTLAND CEMENT CONCRETE PAVEMENT, 10 1/4" (JOINTED)
- 2 AGGREGATE SUBGRADE IMPROVEMENT 12"
- 3 NO. 6 TIE BAR AT 24" LONG, DEFORMED (EPOXY COATED) AT 24" CENTERS. (INCLUDED IN THE COST OF THE PROPOSED CURB AND GUTTER)
- 4 COMBINATION CONCRETE CURB & GUTTER, TYPE B-6.24
- 5 TOPSOIL 6" (TOPSOIL EXCAVATION AND PLACEMENT)
- 6 TOPSOIL 12" (TOPSOIL EXCAVATION AND PLACEMENT)
- 7 SODDING, SALT TOLERANT OR SEEDING (AS NOTED ON LANDSCAPE PLAN)
- 8 SIDEWALK, PORTLAND CEMENT CONCRETE SIDEWALK, 5"
- 9 SHARED USE PATH, PORTLAND CEMENT CONCRETE SIDEWALK, 5"
- 10 SUB-BASE GRANULAR MATERIAL, TYPE B, 4"
- 11 PIPE UNDERDRAINS, FABRIC LINED TRENCH 4"
- 12 GEOTECHNICAL FABRIC FOR GROUND STABILIZATION (SEE NOTE 5)
- 13 AGGREGATE SHOULDERS, TYPE B 10"
- 14 CONCRETE BARRIER BASE
- 15 CONCRETE BARRIER WALL (SPECIAL)
- 16 PARAPET RAILING
- 17 HOT-MIX ASPHALT STABILIZATION, 5"
- 18 STEEL PLATE BEAM GUARDRAIL, TYPE A, 6 FOOT POSTS
- 19 RETAINING WALL (ADVANCED CONTRACT BY OTHERS)
- 20 RETAINING WALL (SEE NOTE 3)
- 21 NOISE WALL (SEE NOTE 4)
- 22 SLEEPER SLAB

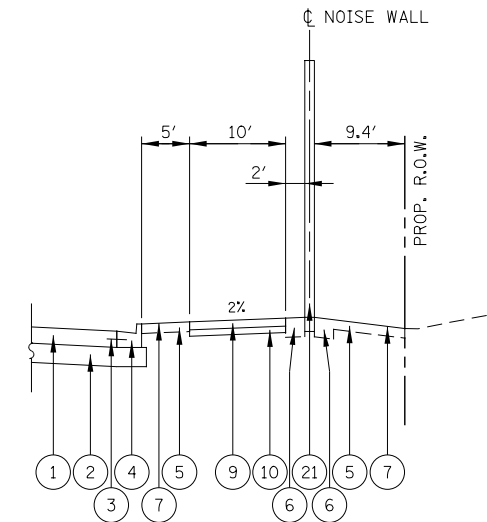


STA. 3989+40 TO STA. 3991+85

RETAINING WALL MOUNTED WITH NOISE WALL
 (SEE NOTE 3)

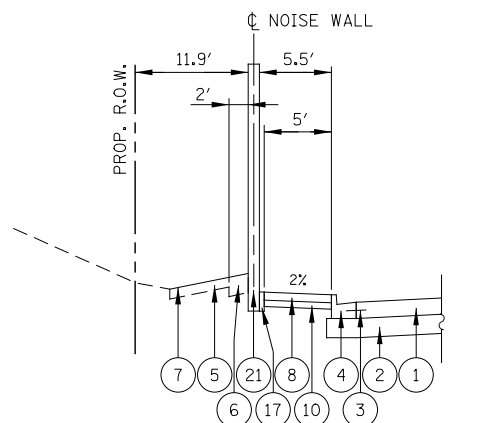


STA. 3998+15 TO STA. 4000+80
 STA. 4018+30 TO STA. 4020+80

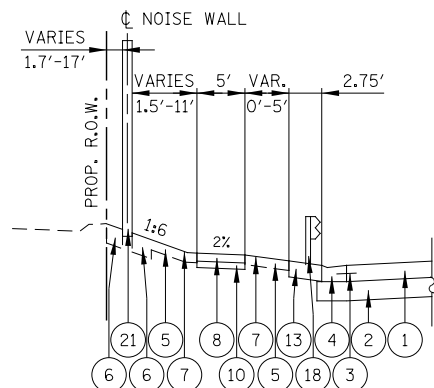


STA. 3987+65 TO STA. 3998+47

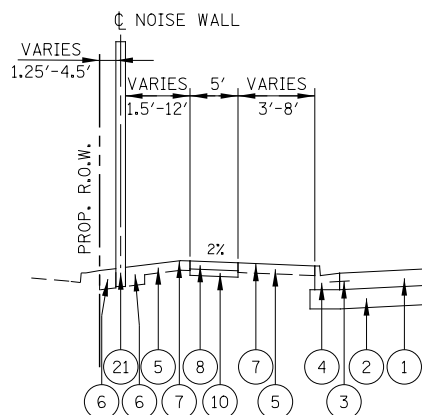
NOISE WALL ALONG NORTHBOUND IL59
 (SEE NOTE 4)



STA. 3988+82 TO STA. 3989+40

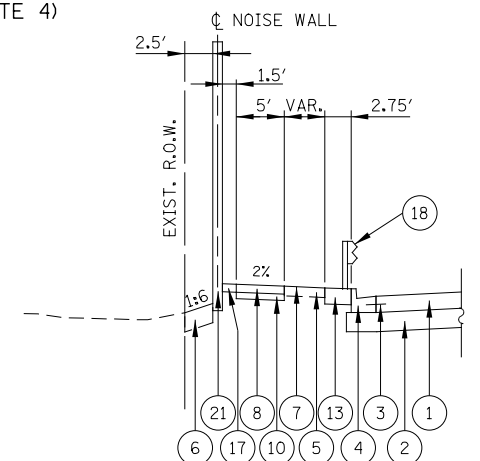


STA. 3991+65 TO STA. 3993+18
 STA. 4000+80 TO STA. 4001+70



STA. 3994+37 TO STA. 3998+21
 STA. 4002+47 TO STA. 4013+65

NOISE WALLS ALONG SOUTHBOUND IL59
 (SEE NOTE 4)



STA. 4020+80 TO STA. 4030+49

NOTES

1. SEE CROSS SECTIONS FOR GRADING INFORMATION.
2. SEE LANDSCAPING PLANS FOR SEEDING AND SODDING INFORMATION.
3. SEE RETAINING WALL PLANS FOR RETAINING WALL INFORMATION.
4. SEE NOISE WALL PLAN AND PROFILE SHEETS, AND NOISE WALL DETAIL SHEET FOR INFORMATION. NOISE WALLS ARE PAID FOR AS "NOISE ABATEMENT WALL, GROUND MOUNTED" OR "NOISE ABATEMENT WALL, STRUCTURE MOUNTED".
5. SEE PLAT OF HIGHWAYS FOR RIGHT OF WAY INFORMATION.

DESIGNED	PJO	REVISED	-
DRAWN	KES	REVISED	-
CHECKED	JCM	REVISED	-
DATE	12/14/2012	REVISED	-

**STATE OF ILLINOIS
 DEPARTMENT OF TRANSPORTATION**

TYPICAL SECTION DETAILS

SCALE: NONE SHEET NO. 8 OF 9 SHEETS STA. TO STA.

F.A.P. RTE.	SECTION	COUNTY	TOTAL SHEETS	SHEET NO.
338	(112 & 113) WRS-6	DUPAGE	734	48
CONTRACT NO. 60R31				
ILLINOIS FED. AID PROJECT				