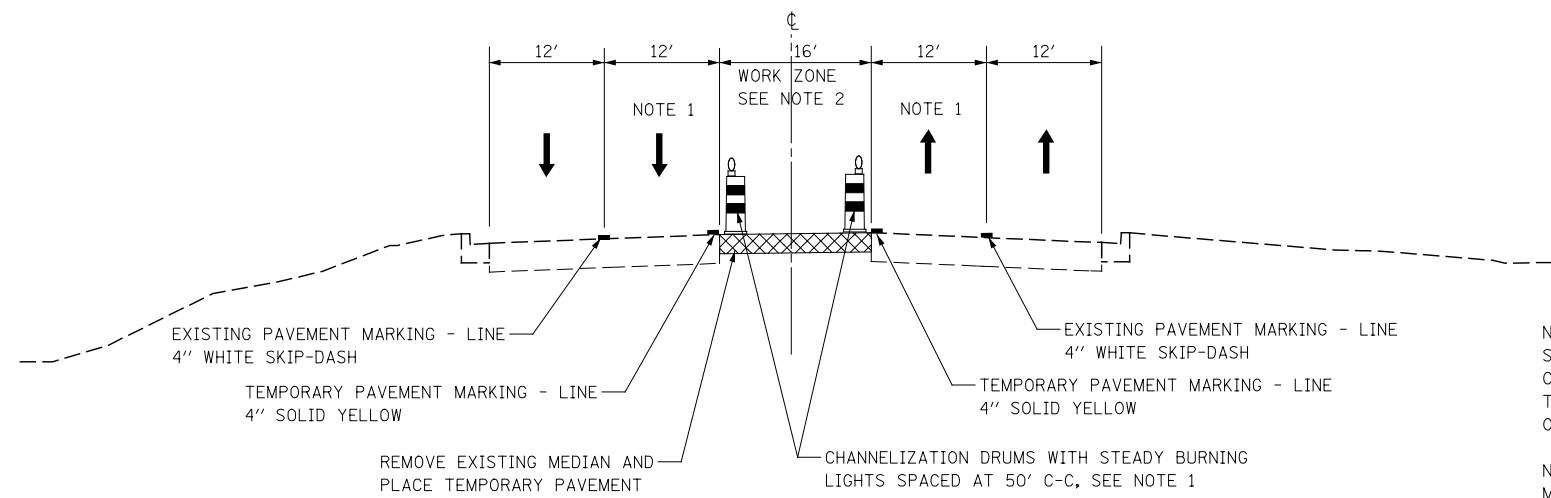


EXISTING CONDITIONS

IL ROUTE 59
STA. 3982+08 TO STA. 4007+90

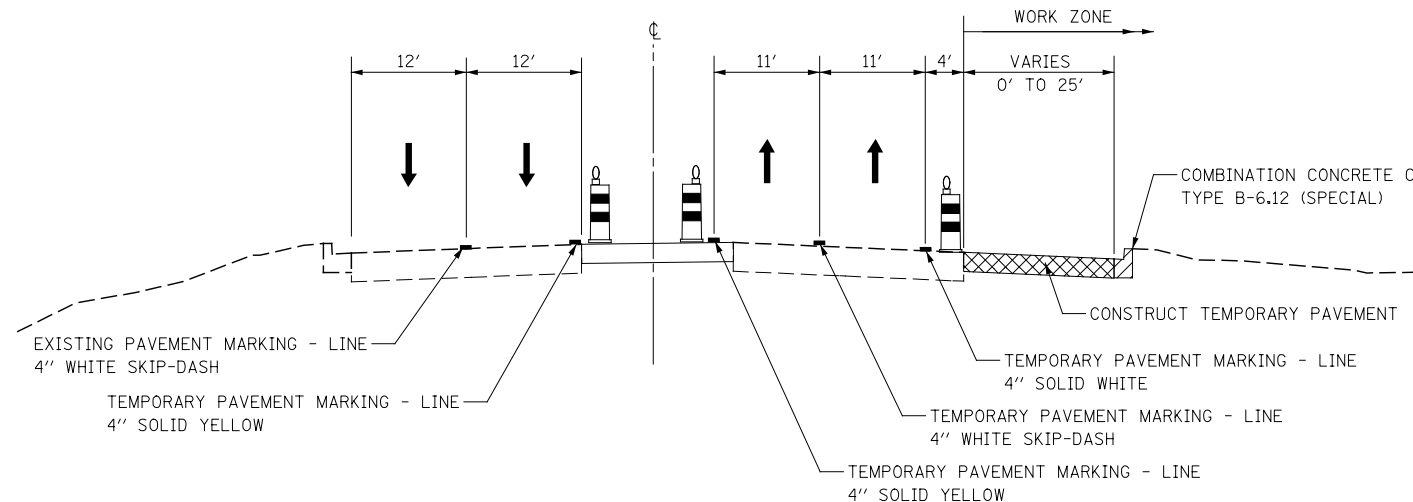
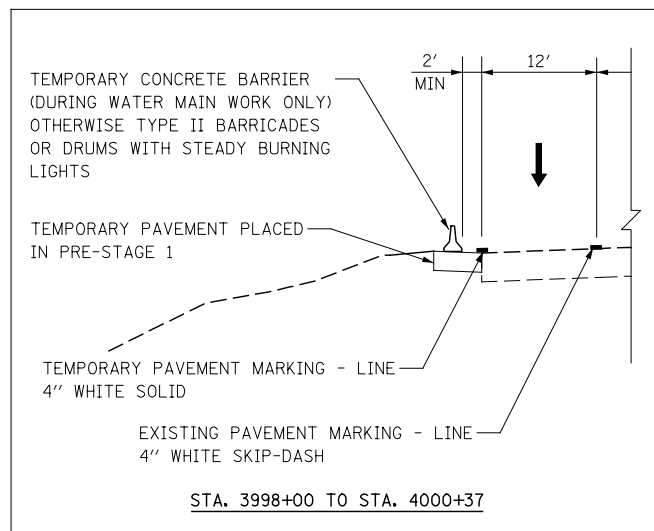


PRE-STAGE 1

IL ROUTE 59
STA. 3982+08 TO STA. 4007+90

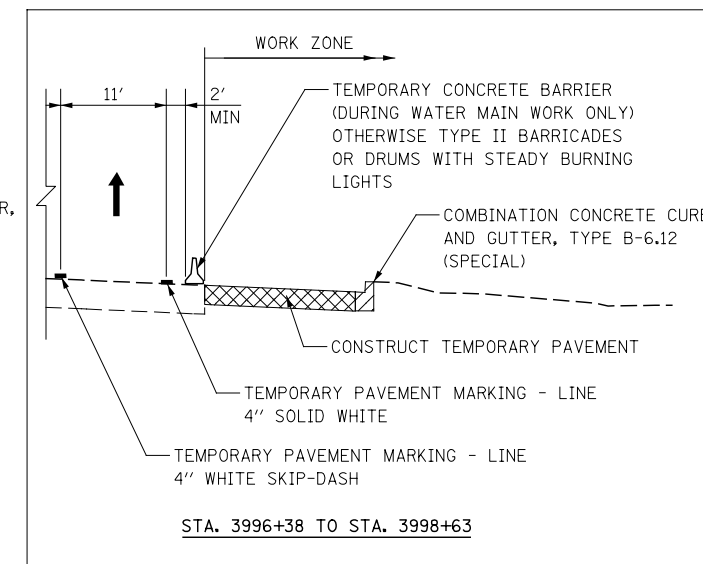
NOTE 1: THE LEFT THROUGH LANE TO BE CLOSED IN ACCORDANCE WITH IDOT STANDARD 701601 DURING CONSTRUCTION WITHIN THE EXISTING MEDIAN. CHANNELIZATION DRUMS SHALL BE RELOCATED ALONG THE ADJACENT THROUGH LANE OPEN TO TRAFFIC. THIS WORK MUST BE DONE DURING OFF-PEAK PERIODS AS DETERMINED BY THE ENGINEER.

NOTE 2: MEDIAN REMOVAL AND REPLACEMENT WORK WILL BE A SHORT-TERM MOVING WORK ZONE OPERATION. THE CONTRACTOR IS REQUIRED TO PLACE TEMPORARY PAVEMENT IN ALL LOCATIONS WHERE THE RAISED MEDIAN IS REMOVED BY THE END OF THE WORK DAY.



PRE-STAGE 1A

IL ROUTE 59
STA. 3982+08 TO STA. 4007+90



	DESIGNED	PJO	REVISED	-	STATE OF ILLINOIS DEPARTMENT OF TRANSPORTATION	IL ROUTE 59 MOT TYPICAL SECTIONS NORTH AURORA ROAD TO PAXTON DR /PLATINUM AVE	F.A.P. RTE.	SECTION	COUNTY	TOTAL SHEETS	SHEET NO.
	DRAWN	KES	REVISED	-			338	(112 & 113) WRS-6	DUPAGE	734	76
	CHECKED	JCM	REVISED	-			CONTRACT NO. 60R31				
	DATE	12/14/2012	REVISED	-			ILLINOIS FED. AID PROJECT				
						SCALE: AS SHOWN	SHEET NO. 7 OF 117 SHEETS	STA. 3982+08	TO STA. 4007+90		