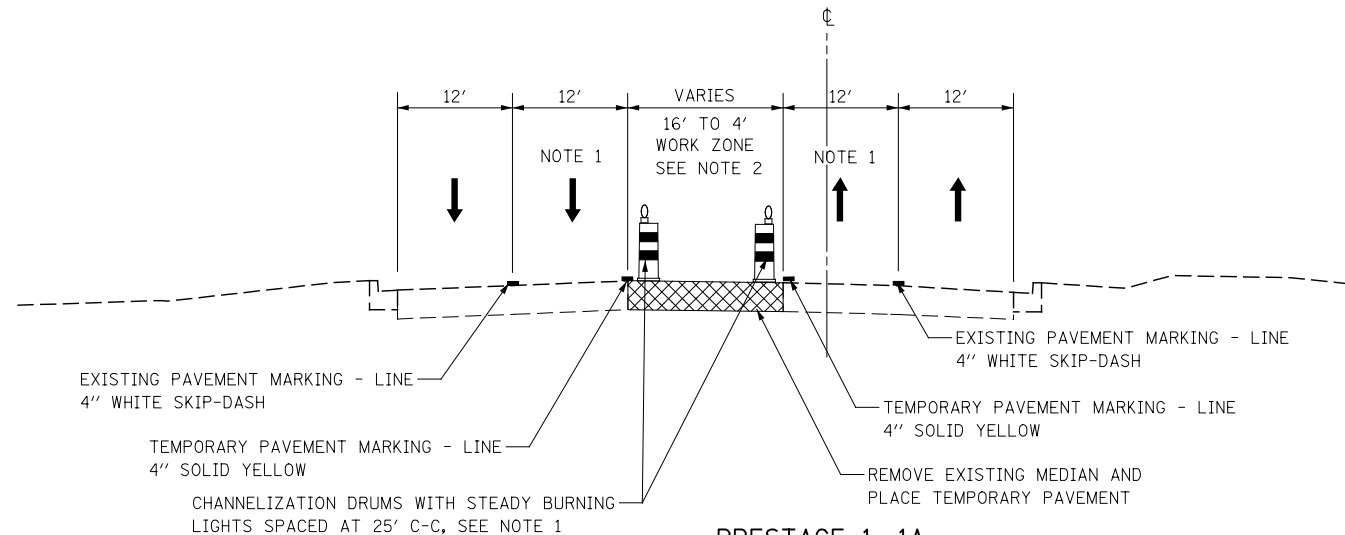


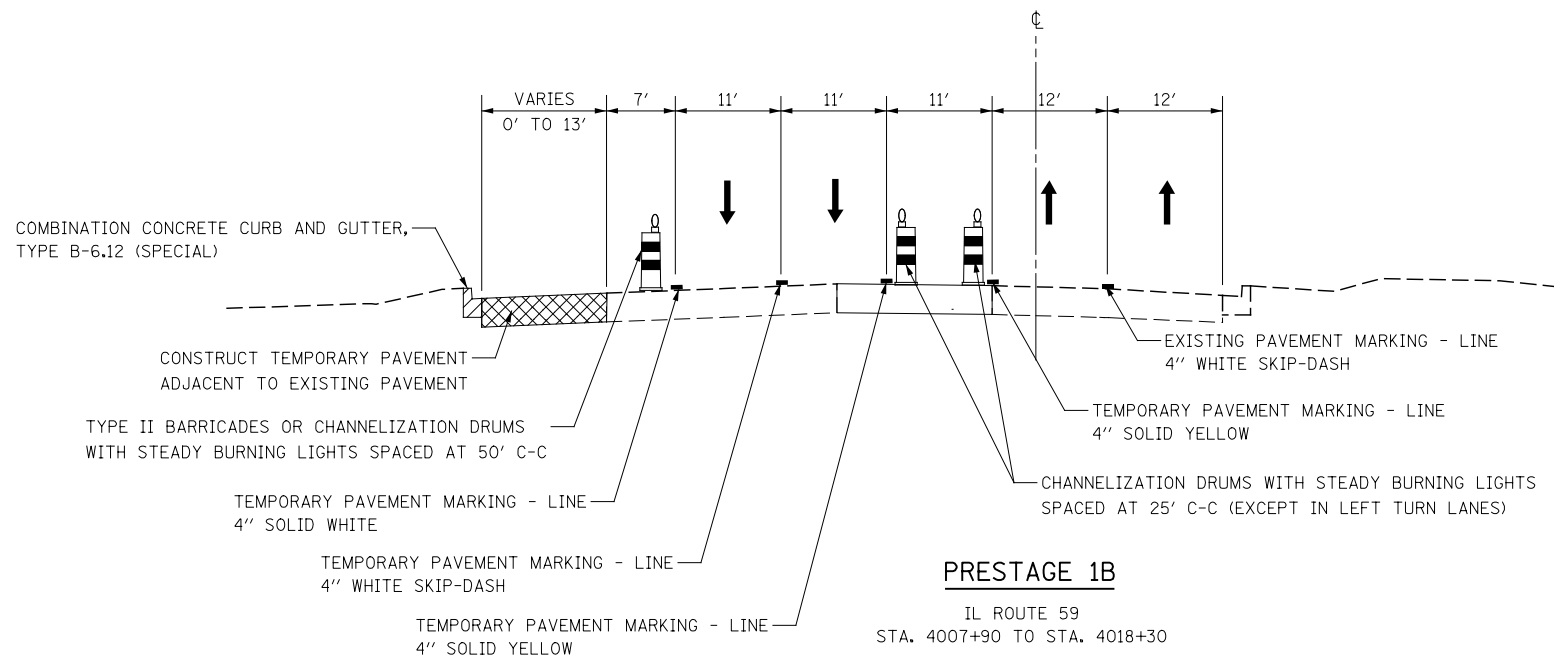
EXISTING CONDITIONS

IL ROUTE 59
STA. 4007+90 TO STA. 4018+30



PRESTAGE 1, 1A

IL ROUTE 59
STA. 4007+90 TO STA. 4018+30



PRESTAGE 1B

IL ROUTE 59
STA. 4007+90 TO STA. 4018+30

NOTE 1: THE LEFT THROUGH LANE TO BE CLOSED IN ACCORDANCE WITH IDOT STANDARD 701601 DURING CONSTRUCTION WITHIN THE EXISTING MEDIAN. CHANNELIZATION DRUMS SHALL BE RELOCATED ALONG THE ADJACENT THROUGH LANE OPEN TO TRAFFIC. THIS WORK MUST BE DONE DURING OFF-PEAK PERIODS AS DETERMINED BY THE ENGINEER.

NOTE 2: MEDIAN REMOVAL AND REPLACEMENT WORK WILL BE A SHORT-TERM MOVING WORK ZONE OPERATION. THE CONTRACTOR IS REQUIRED TO PLACE TEMPORARY PAVEMENT IN ALL LOCATIONS WHERE THE RAISED MEDIAN IS REMOVED BY THE END OF THE WORK DAY.

DESIGNED	PJO	REVISED	-
DRAWN	KES	REVISED	-
CHECKED	JCM	REVISED	-
DATE	12/14/2012	REVISED	-

**STATE OF ILLINOIS
DEPARTMENT OF TRANSPORTATION**

**IL ROUTE 59 MOT TYPICAL SECTIONS
PAXTON DR /PLATINUM AVE TO BRUCE LN /BROOKDALE RD**

SCALE: AS SHOWN | SHEET NO. 10 OF 117 SHEETS | STA. 4007+90 TO STA. 4018+30

F.A.P. RTE.	SECTION	COUNTY	TOTAL SHEETS	SHEET NO.
338	(112 & 113) WRS-6	DUPAGE	734	79
			CONTRACT NO. 60R31	
ILLINOIS FED. AID PROJECT				