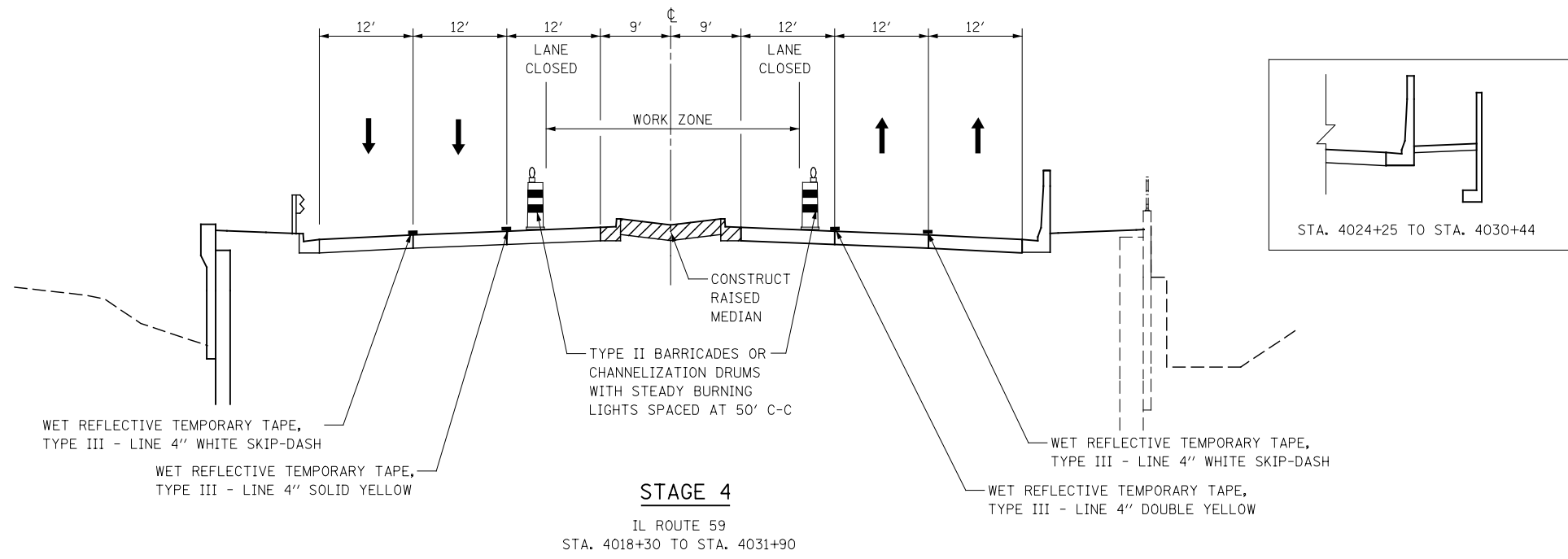


NOTE 1: REPLACE TYPE II BARRICADES OR DRUMS WITH TEMPORARY CONCRETE BARRIER BETWEEN STA. 4020+00 AND STA. 4022+00 DURING BOX CULVERT CONSTRUCTION.

STAGE 3
IL ROUTE 59
STA. 4018+30 TO STA. 4031+90



STAGE 4
IL ROUTE 59
STA. 4018+30 TO STA. 4031+90

DESIGNED <i>PJO</i> DRAWN <i>KES</i> CHECKED <i>JCM</i> DATE <i>12/14/2012</i>	REVISED -	STATE OF ILLINOIS DEPARTMENT OF TRANSPORTATION	IL ROUTE 59 MOT TYPICAL SECTIONS BRUCE LN /BROOKDALE RD TO PEBBLEWOOD LN /MCDOWELL RD		F.A.P. RTE.	SECTION	COUNTY	TOTAL SHEETS	SHEET NO.	
	REVISED -		338	(112 & 113) WRS-6	DUPAGE	734	84			
	REVISED -		SCALE: AS SHOWN SHEET NO. 15 OF 117 SHEETS STA. 4018+30 TO STA. 4031+90				CONTRACT NO. 60R31			
	REVISED -		ILLINOIS FED. AID PROJECT							