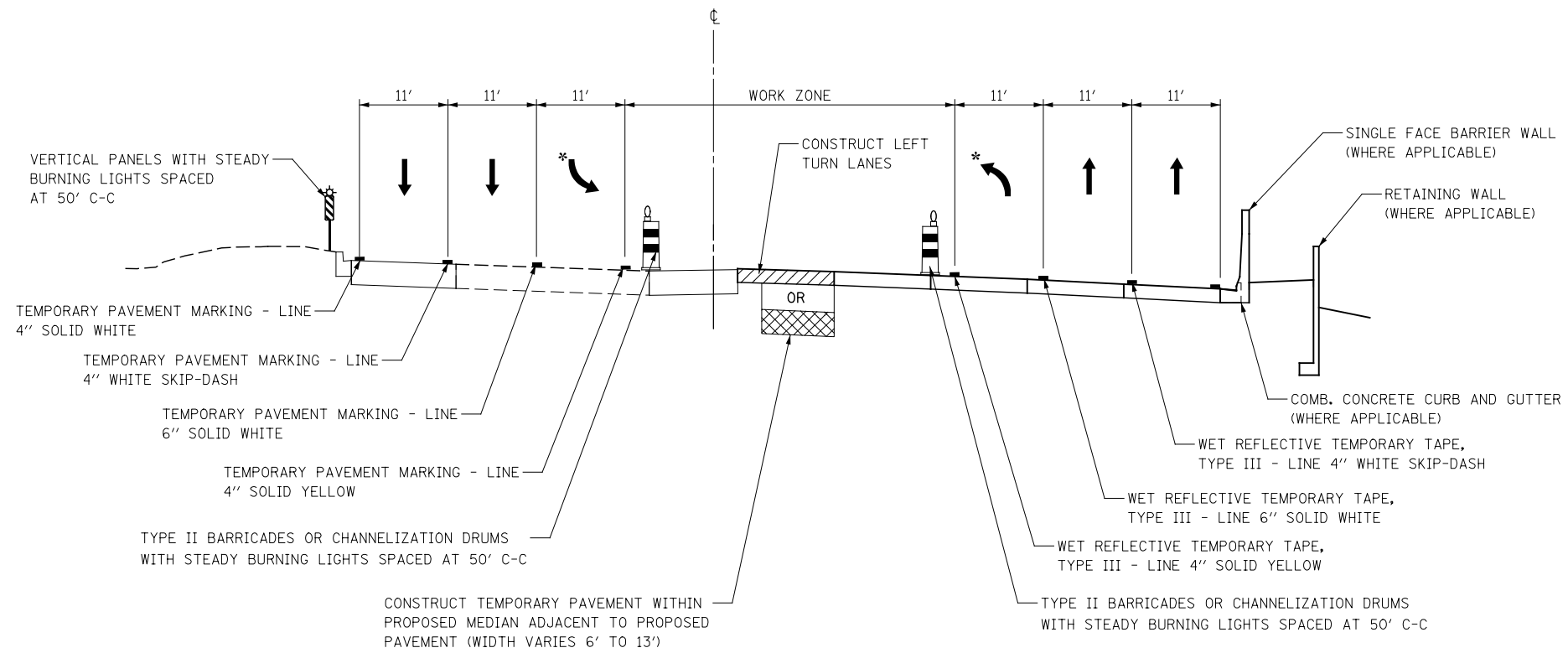
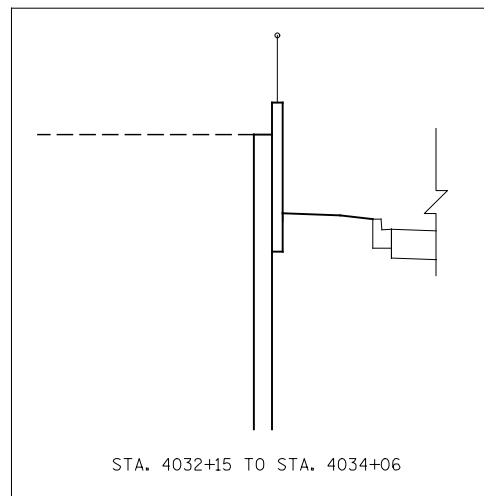


STAGES 1, 1A, 1B, 1C

IL ROUTE 59
STA. 4031+90 TO STA. 4045+00



* LEFT TURN LANE WHERE APPLICABLE

STAGES 2, 2A, 2B

IL ROUTE 59
STA. 4031+90 TO STA. 4045+00

DESIGNED <i>PJO</i>	REVISED -	STATE OF ILLINOIS DEPARTMENT OF TRANSPORTATION	IL ROUTE 59 MOT TYPICAL SECTIONS PEBBLEWOOD LN /MCDOWELL RD TO DIEHL ROAD		F.A.P. RTE.	SECTION	COUNTY	TOTAL SHEETS	SHEET NO.
DRAWN <i>KES</i>	REVISED -		338	(112 & 113) WRS-6	DUPAGE	734	86		
CHECKED <i>JCM</i>	REVISED -		CONTRACT NO. 60R31						
DATE <i>12/14/2012</i>	REVISED -		ILLINOIS FED. AID PROJECT						
			SCALE: AS SHOWN	SHEET NO. 17 OF 117 SHEETS	STA. 4031+90	TO STA. 4045+00			