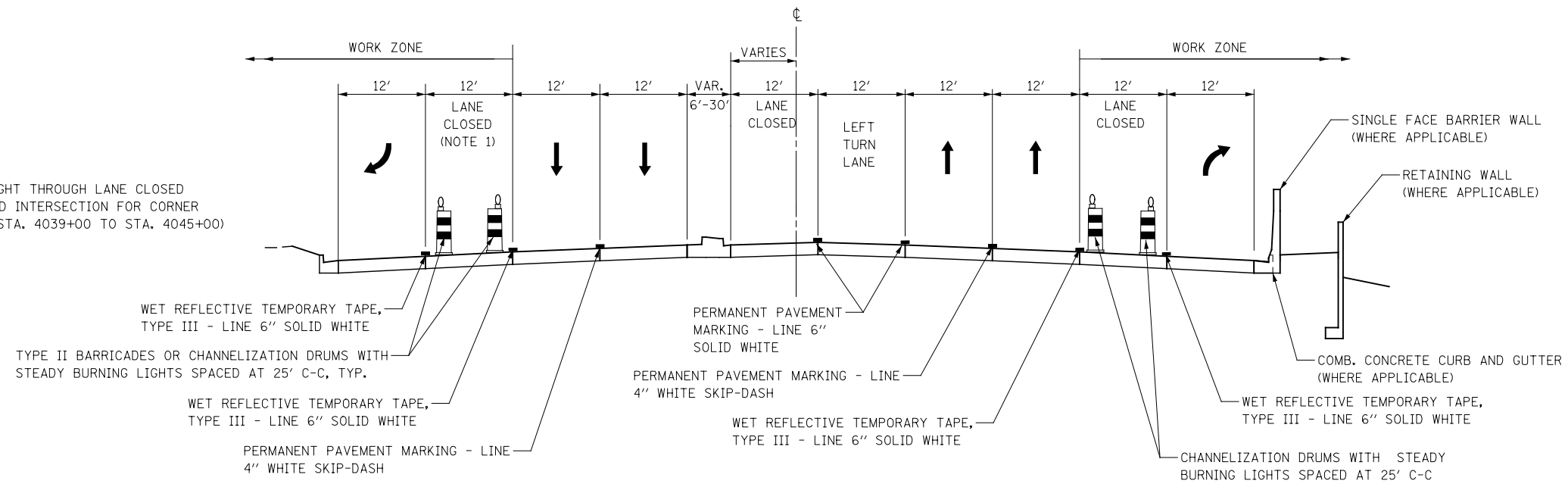


NOTE 1: SOUTHBOUND RIGHT THROUGH LANE CLOSED  
 APPROACHING DIEHL ROAD INTERSECTION FOR CORNER  
 ISLAND CONSTRUCTION (STA. 4039+00 TO STA. 4045+00)



**STAGE 4A**

IL ROUTE 59  
 STA. 4031+90 TO STA. 4045+00

DESIGNED <i>PJO</i>	REVISED -	<b>STATE OF ILLINOIS DEPARTMENT OF TRANSPORTATION</b>	<b>IL ROUTE 59 MOT TYPICAL SECTIONS PEBBLEWOOD LN /MCDOWELL RD TO DIEHL ROAD</b>		F.A.P. RTE.	SECTION	COUNTY	TOTAL SHEETS	SHEET NO.
DRAWN <i>KES</i>	REVISED -		338	(112 & 113) WRS-6	DUPAGE	734	88		
CHECKED <i>JCM</i>	REVISED -		CONTRACT NO. 60R31						
DATE <i>12/14/2012</i>	REVISED -		ILLINOIS FED. AID PROJECT						
			SCALE: AS SHOWN	SHEET NO. 19 OF 117 SHEETS	STA. 4031+90	TO STA. 4045+00			