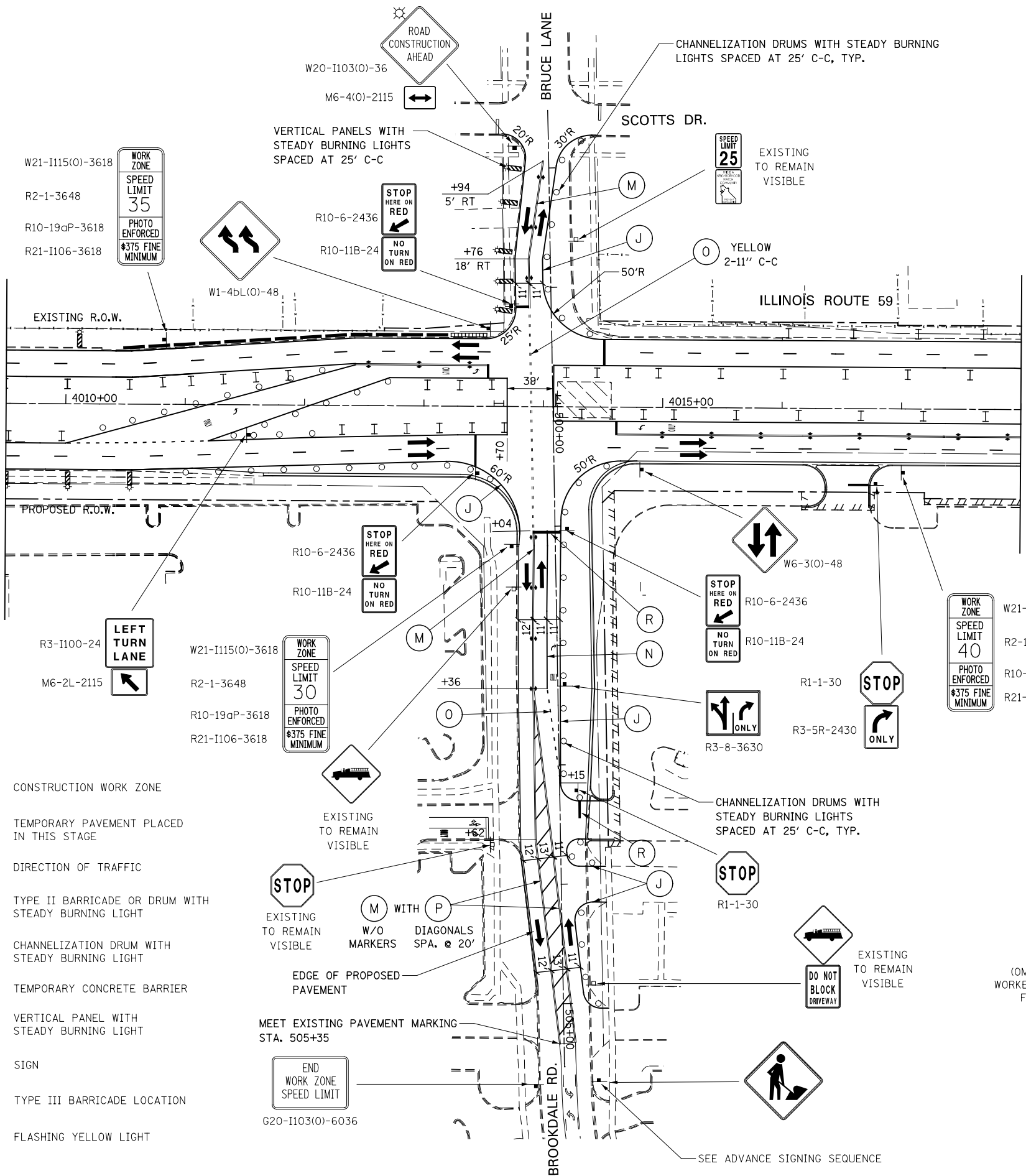


MATCH LINE STA. 4009+50  
(SEE STAGE 2)

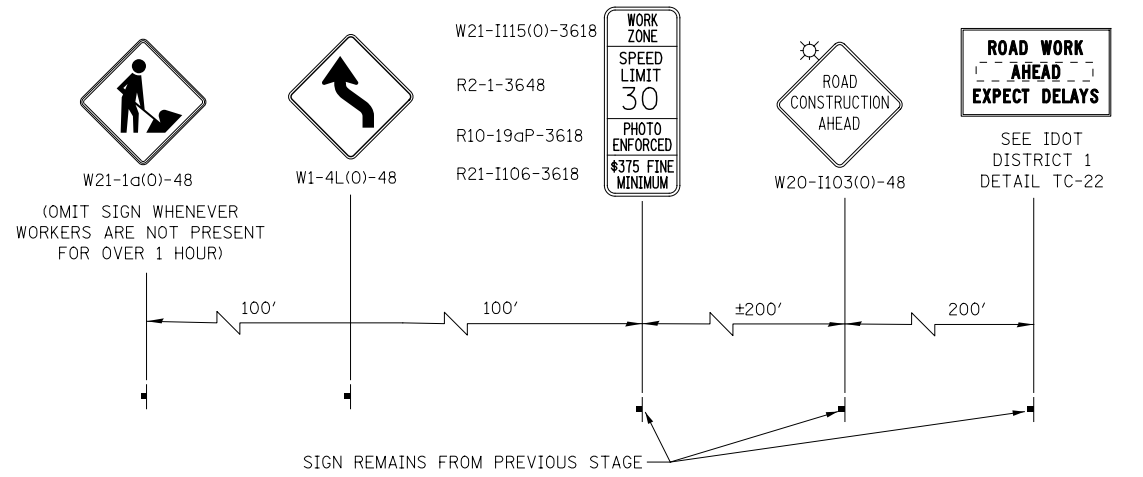
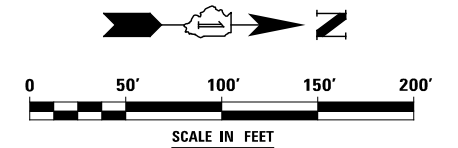
MATCH LINE STA. 4018+00  
(SEE STAGE 2)



- MOT PAVEMENT MARKING LEGEND**
- (A) TEMPORARY PAVEMENT MARKING - LINE 4", SOLID WHITE
  - (B) TEMPORARY PAVEMENT MARKING - LINE 4", WHITE SKIP-DASH (10' LINE - 30' SPACE)
  - (C) TEMPORARY PAVEMENT MARKING - LINE 4", SOLID YELLOW
  - (D) TEMPORARY PAVEMENT MARKING - LINE 4", DOUBLE YELLOW SPACED AT 11" C-C WITH TEMPORARY RAISED REFLECTIVE PAVEMENT MARKERS SPACED 40' C-C (BI-DIRECTIONAL AMBER)
  - (E) TEMPORARY PAVEMENT MARKING - LINE 6", SOLID WHITE
  - (F) TEMPORARY PAVEMENT MARKING - LINE 6", WHITE DOTTED (2' LINE - 6' SPACE) (UNLESS OTHERWISE NOTED)
  - (G) TEMPORARY PAVEMENT MARKING - LINE 12", SOLID YELLOW
  - (H) TEMPORARY PAVEMENT MARKING - LINE 24", SOLID WHITE
  - (I) TEMPORARY PAVEMENT MARKING, LETTERS & SYMBOLS
  - (J) WET REFLECTIVE TEMPORARY TAPE, TYPE III, 4", SOLID WHITE
  - (K) WET REFLECTIVE TEMPORARY TAPE, TYPE III, 4", WHITE SKIP-DASH (10' LINE - 30' SPACE)
  - (L) WET REFLECTIVE TEMPORARY TAPE, TYPE III, 4", SOLID YELLOW
  - (M) WET REFLECTIVE TEMPORARY TAPE, TYPE III, 4", DOUBLE YELLOW SPACED AT 11" C-C WITH TEMPORARY RAISED REFLECTIVE PAVEMENT MARKERS SPACED 40' C-C (BI-DIRECTIONAL AMBER)
  - (N) WET REFLECTIVE TEMPORARY TAPE, TYPE III, 6", SOLID WHITE
  - (O) WET REFLECTIVE TEMPORARY TAPE, TYPE III, 6", WHITE DOTTED (2' LINE - 6' SPACE) (UNLESS OTHERWISE NOTED)
  - (P) WET REFLECTIVE TEMPORARY TAPE, TYPE III, 12", SOLID YELLOW
  - (R) WET REFLECTIVE TEMPORARY TAPE, TYPE III, 24", SOLID WHITE
  - (S) WET REFLECTIVE TEMPORARY TAPE, TYPE III, LETTERS & SYMBOLS

**LEGEND**

- CONSTRUCTION WORK ZONE
- TEMPORARY PAVEMENT PLACED IN THIS STAGE
- DIRECTION OF TRAFFIC
- TYPE II BARRICADE OR DRUM WITH STEADY BURNING LIGHT
- CHANNELIZATION DRUM WITH STEADY BURNING LIGHT
- TEMPORARY CONCRETE BARRIER
- VERTICAL PANEL WITH STEADY BURNING LIGHT
- SIGN
- TYPE III BARRICADE LOCATION
- FLASHING YELLOW LIGHT



**ADVANCE SIGNING FOR BROOKDALE ROAD**  
(SPACING MAY VARY DUE TO FIELD CONDITIONS)

DESIGNED	PJO	REVISED	-
DRAWN	KES	REVISED	-
CHECKED	JCM	REVISED	-
DATE	12/14/2012	REVISED	-

**STATE OF ILLINOIS  
DEPARTMENT OF TRANSPORTATION**

**MAINTENANCE OF TRAFFIC - STAGE 2C  
ILLINOIS ROUTE 59**

F.A.P. RTE.	SECTION	COUNTY	TOTAL SHEETS	SHEET NO.
338	(112 & 113) WRS-6	DUPAGE	734	146
CONTRACT NO. 60R31				
ILLINOIS FED. AID PROJECT				

SCALE: AS SHOWN SHEET NO. 77 OF 117 SHEETS STA. 4010+00 TO STA. 4018+00