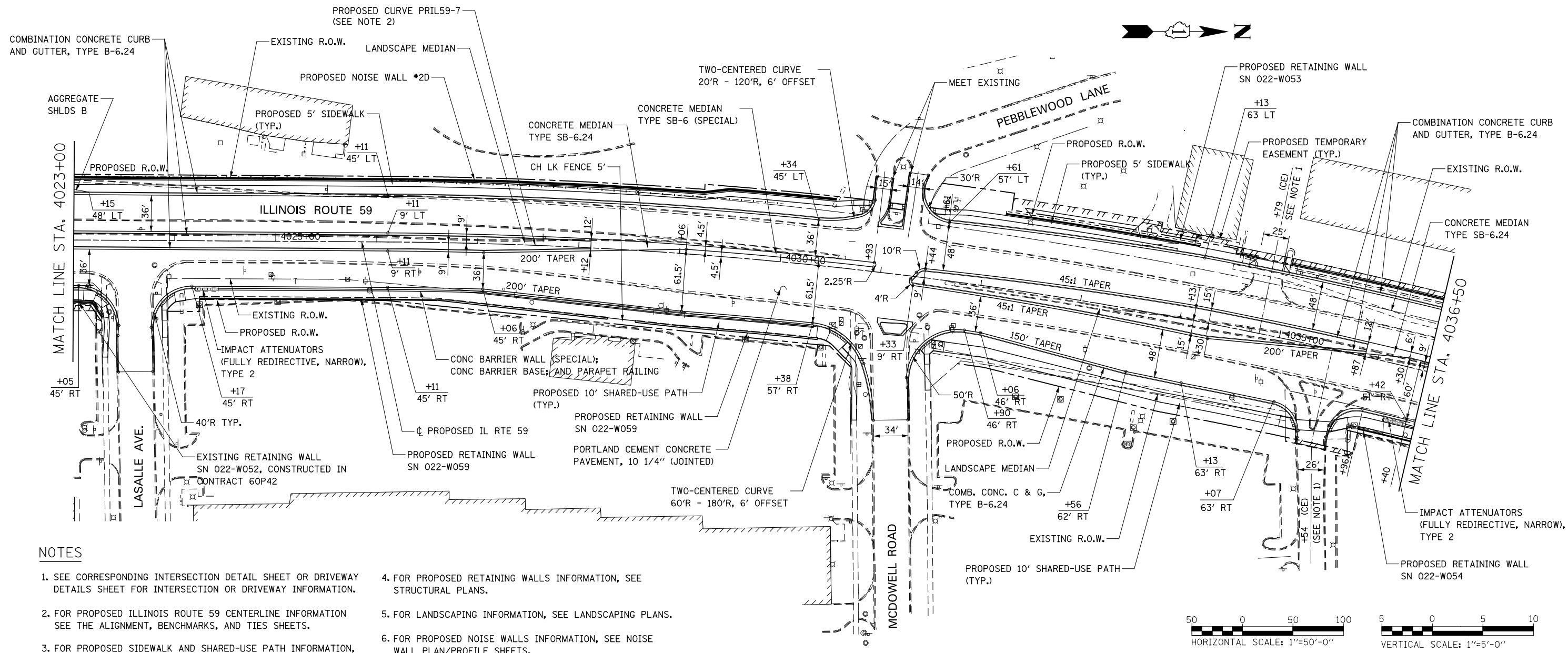


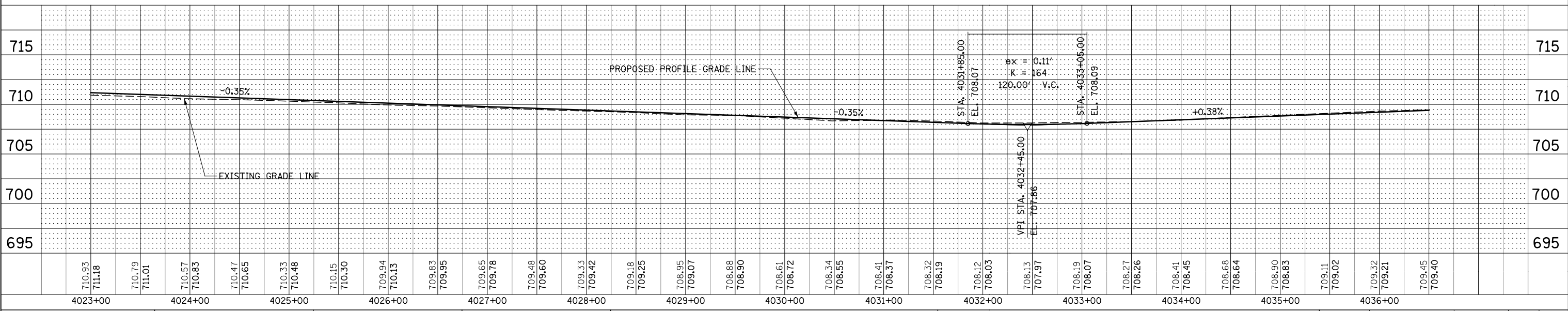
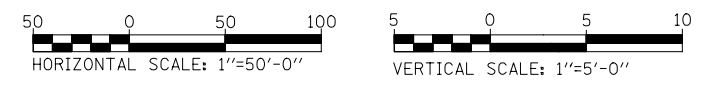
PLAN	SURVEYED	DATE
	PLOTTED	BY
	CHECKED	
	ALIGNED	
	FILED	
	NO.	

PROFILE	SURVEYED	DATE
	PLOTTED	BY
	CHECKED	
	ALIGNED	
	FILED	
	NO.	



NOTES

- SEE CORRESPONDING INTERSECTION DETAIL SHEET OR DRIVEWAY DETAILS SHEET FOR INTERSECTION OR DRIVEWAY INFORMATION.
- FOR PROPOSED ILLINOIS ROUTE 59 CENTERLINE INFORMATION SEE THE ALIGNMENT, BENCHMARKS, AND TIES SHEETS.
- FOR PROPOSED SIDEWALK AND SHARED-USE PATH INFORMATION, SEE SIDEWALK/SHARED-USED PATH PLANS.
- FOR PROPOSED RETAINING WALLS INFORMATION, SEE STRUCTURAL PLANS.
- FOR LANDSCAPING INFORMATION, SEE LANDSCAPING PLANS.
- FOR PROPOSED NOISE WALLS INFORMATION, SEE NOISE WALL PLAN/PROFILE SHEETS.



DESIGNED	PJO	REVISED	-
DRAWN	KES	REVISED	-
CHECKED	JCM	REVISED	-
DATE	12/14/2012	REVISED	-

**STATE OF ILLINOIS
DEPARTMENT OF TRANSPORTATION**

PLAN / PROFILE - ILLINOIS ROUTE 59

SCALE: AS SHOWN SHEET NO. 4 OF 9 SHEETS STA. 4023+00 TO STA. 4036+50

F.A.P. RTE.	SECTION	COUNTY	TOTAL SHEETS	SHEET NO.
338	(112 & 113) WRS-6	DUPAGE	734	197
CONTRACT NO. 60R31				
ILLINOIS FED. AID PROJECT				