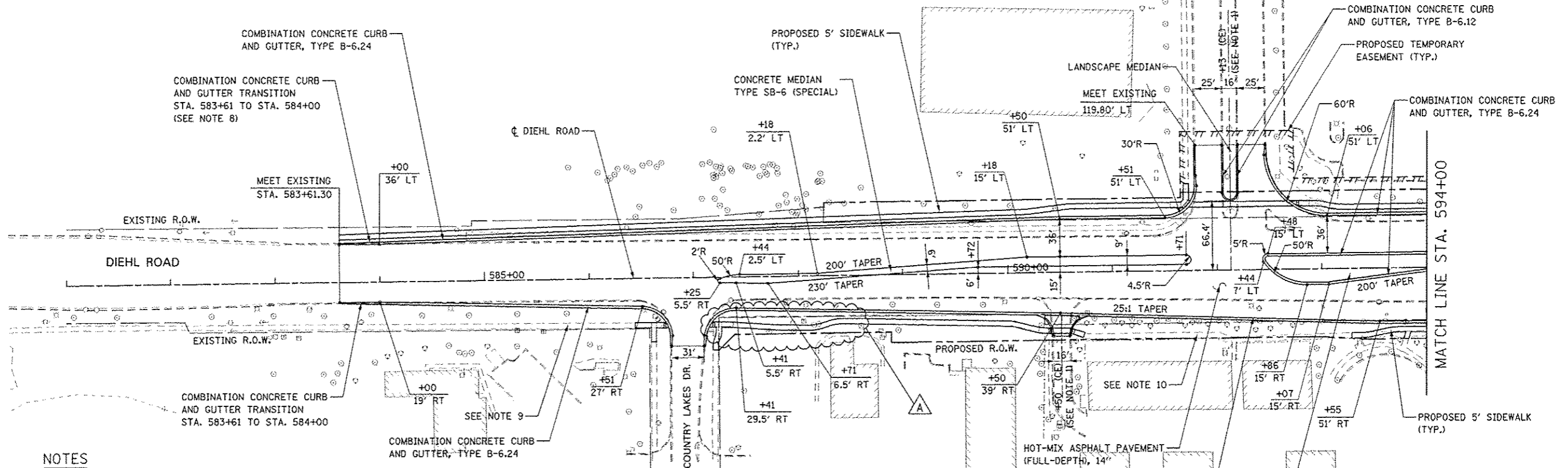


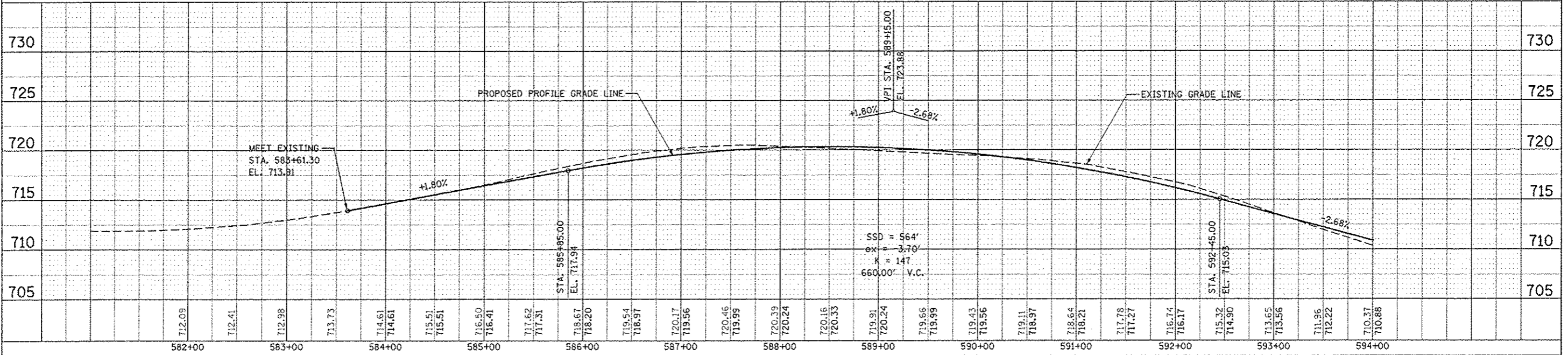
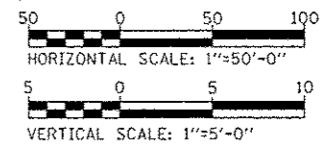
PLAN	37
DATE	
BY	
CHECKED	
DESIGNED	
IN CHARGE	

PROFILE	37
DATE	
BY	
CHECKED	
DESIGNED	
IN CHARGE	



**NOTES**

- SEE CORRESPONDING INTERSECTION DETAIL SHEET OR DRIVEWAY DETAILS SHEET FOR INTERSECTION OR DRIVEWAY INFORMATION.
- FOR PROPOSED DIEHL ROAD CENTERLINE INFORMATION SEE ALIGNMENT, BENCHMARKS, AND TIES SHEETS.
- FOR PROPOSED SIDEWALK AND SHARED-USE PATH INFORMATION, SEE SIDEWALK/SHARED-USED PATH PLANS.
- FOR PROPOSED RETAINING WALLS INFORMATION, SEE STRUCTURAL PLANS.
- FOR LANDSCAPING INFORMATION, SEE LANDSCAPING PLANS.
- FOR PROPOSED NOISE WALLS INFORMATION, SEE NOISE WALL PLAN/PROFILE SHEETS.
- FOR HMA MATERIAL REQUIREMENTS SEE HMA MIXTURE CHART ON THE GENERAL NOTE SHEET.
- ALL WORK REQUIRED FOR THE CONSTRUCTION OF COMBINATION CONCRETE CURB AND GUTTER TRANSITION SHALL BE PAID FOR AS COMBINATION CONCRETE CURB AND GUTTER, TYPE B-6.24.
- THE SIDEWALK FROM STA. 583+61 TO STA. 586+44 AND FROM STA. 590+73 TO STA. 593+28 SHALL NOT BE REMOVED. ANY DAMAGE TO THE SIDEWALK BY THE CONTRACTOR, AS DETERMINED BY THE ENGINEER, SHALL BE REMOVED AND REPLACED BY THE CONTRACTOR AT THE CONTRACTOR'S OWN EXPENSE. NO ADDITIONAL COMPENSATION WILL BE ALLOWED FOR THIS WORK.



DESIGNED	PJO	REVISED	- ADDENDUM A 02/22/2013	<b>STATE OF ILLINOIS DEPARTMENT OF TRANSPORTATION</b>	<b>PLAN / PROFILE - DIEHL ROAD</b>	F.A.P. RTE.	SECTION	COUNTY	TOTAL SHEETS	SHEET NO.	
DRAWN	KES	REVISED	-			338	(112 & 113)	WR5-6	DUPAGE	734	200
CHECKED	JCM	REVISED	-			CONTRACT NO. 60R31					
DATE	12/14/2012	REVISED	-			FED. ROAD DIST. NO. ILLINOIS FED. AID PROJECT					