
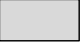


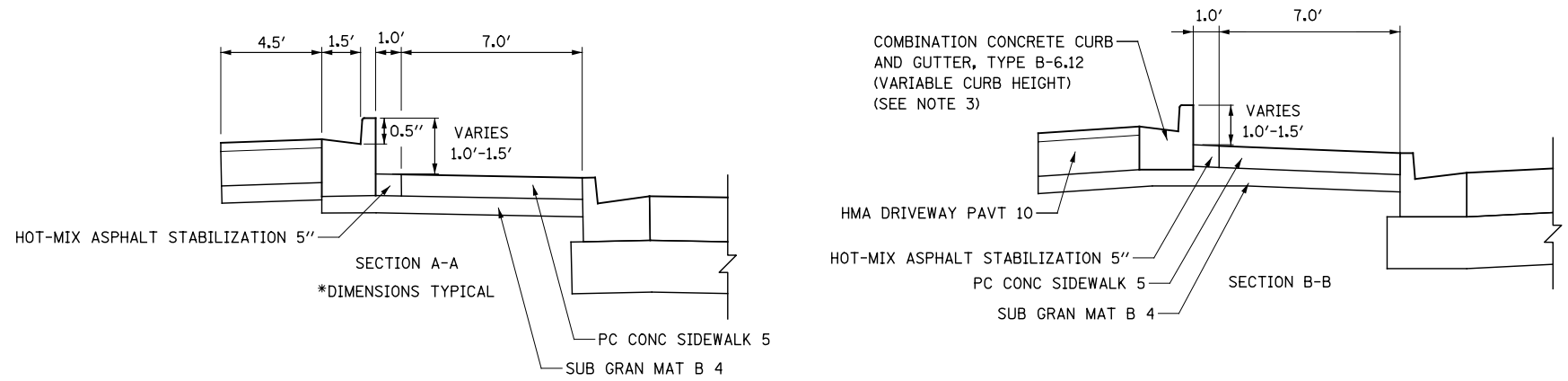
**LEGEND:**

-  PORTLAND CEMENT CONCRETE DRIVEWAY PAVEMENT, 8 INCH SUBBASE GRANULAR MATERIAL, TYPE B 4"
-  HOT-MIX ASPHALT DRIVEWAY PAVEMENT, 10" (SEE NOTE 1) SUBBASE GRANULAR MATERIAL, TYPE B 4"

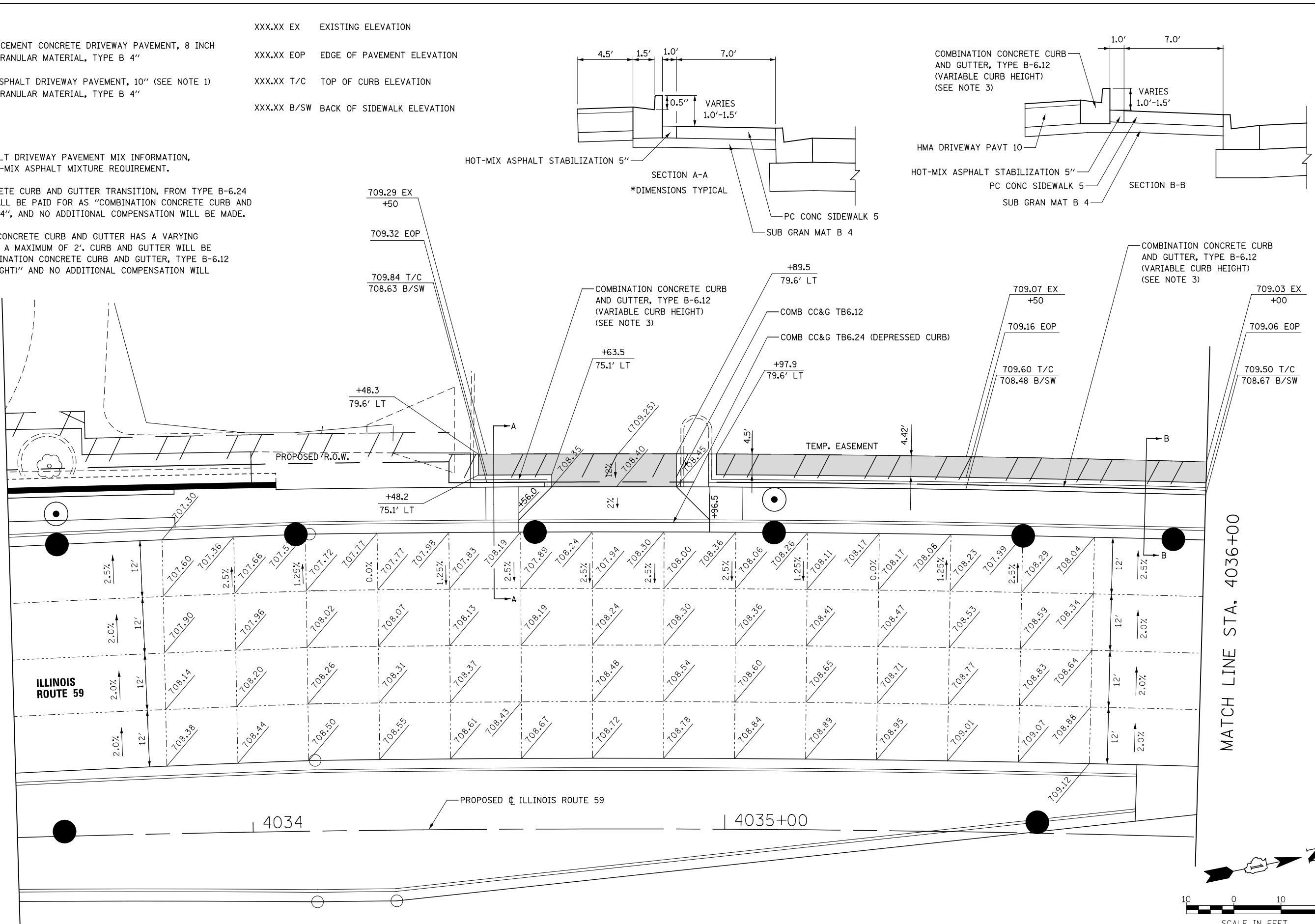
- XXX.XX EX EXISTING ELEVATION
- XXX.XX EOP EDGE OF PAVEMENT ELEVATION
- XXX.XX T/C TOP OF CURB ELEVATION
- XXX.XX B/SW BACK OF SIDEWALK ELEVATION

**NOTES:**

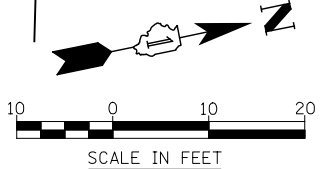
1. FOR HOT-MIX ASPHALT DRIVEWAY PAVEMENT MIX INFORMATION, SEE TABLE FOR HOT-MIX ASPHALT MIXTURE REQUIREMENT.
2. COMBINATION CONCRETE CURB AND GUTTER TRANSITION, FROM TYPE B-6.24 TO TYPE B-6.12 SHALL BE PAID FOR AS "COMBINATION CONCRETE CURB AND GUTTER, TYPE B-6.24", AND NO ADDITIONAL COMPENSATION WILL BE MADE.
3. THIS COMBINATION CONCRETE CURB AND GUTTER HAS A VARYING HEIGHT FROM 6" TO A MAXIMUM OF 2'. CURB AND GUTTER WILL BE PAID FOR AS "COMBINATION CONCRETE CURB AND GUTTER, TYPE B-6.12 (VARIABLE CURB HEIGHT)" AND NO ADDITIONAL COMPENSATION WILL BE MADE.



MATCH LINE STA. 4033+50



MATCH LINE STA. 4036+00



DESIGNED	PJO	REVISED	-
DRAWN	KES	REVISED	-
CHECKED	JCM	REVISED	-
DATE	12/14/2012	REVISED	-

**STATE OF ILLINOIS  
DEPARTMENT OF TRANSPORTATION**

**DRIVEWAY DETAILS**  
**ILLINOIS ROUTE 59 - STA. 4034 + 67, 4037 + 38 AND 4039 + 00**

F.A.P. RTE.	SECTION	COUNTY	TOTAL SHEETS	SHEET NO.
338	(112 & 113) WRS-6	DUPAGE	734	257
CONTRACT NO. 60R31				
ILLINOIS FED. AID PROJECT				

SCALE: AS SHOWN | SHEET NO. 6 OF 16 SHEETS | STA. TO STA.