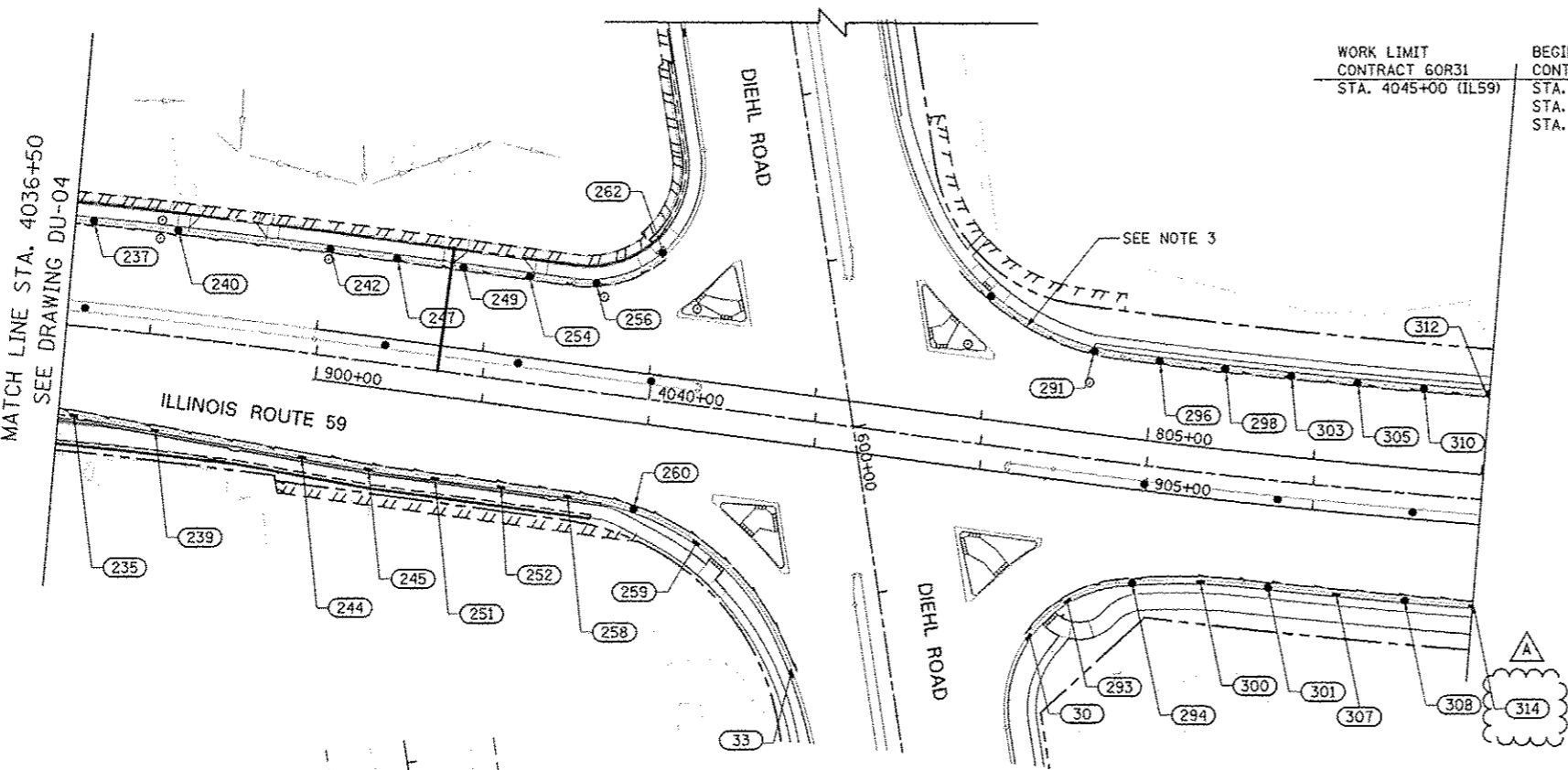


SEE BELOW FOR CONTINUATION
OF DIEHL ROAD (W OF IL59)

MATCH LINE STA. 4036+50
SEE DRAWING DU-04




WORK LIMIT
CONTRACT 60R31
STA. 4045+00 (IL59)

BEGIN WORK
CONTRACT 60I31
STA. 4045+00 (IL59)
STA. 906+99.34 (IL59 NB)
STA. 807+01 (IL59 SB)

| STRUCTURE NUMBER | FROM STATION | OFFSET | TO STRUCTURE NUMBER | STATION | OFFSET | LENGTH IN FEET | DIAMETER IN INCHES |
|------------------|--------------|-----------|---------------------|------------|----------|----------------|--------------------|
| 242 | 4038+00.00 | 63.00 LT | 240 | 4037+10.00 | 63.00 LT | 88 | 4 |
| 240 | 4037+10.00 | 63.00 LT | 237 | 4036+60.00 | 63.00 LT | 46 | 4 |
| 242 | 4038+00.00 | 63.00 LT | 247 | 4038+40.00 | 63.00 LT | 36 | 4 |
| 247 | 4038+40.00 | 63.00 LT | 249 | 4038+80.00 | 63.00 LT | 36 | 4 |
| 249 | 4038+80.00 | 63.00 LT | 254 | 4039+20.00 | 63.00 LT | 36 | 4 |
| 254 | 4039+20.00 | 63.00 LT | 256 | 4039+60.00 | 64.36 LT | 36 | 4 |
| 256 | 4039+60.00 | 64.36 LT | 262 | 4039+98.00 | 86.20 LT | 41 | 4 |
| START | 4041+73.90 | 100.40 LT | 291 | 4042+60.00 | 63.95 LT | 94 | 4 |
| 291 | 4042+60.00 | 63.95 LT | 296 | 4043+00.00 | 63.00 LT | 36 | 4 |
| 296 | 4043+00.00 | 63.00 LT | 298 | 4043+40.00 | 63.00 LT | 36 | 4 |
| 298 | 4043+40.00 | 63.00 LT | 303 | 4043+80.00 | 63.00 LT | 36 | 4 |
| 303 | 4043+80.00 | 63.00 LT | 305 | 4044+20.00 | 63.00 LT | 36 | 4 |
| 305 | 4044+20.00 | 63.00 LT | 310 | 4044+60.00 | 63.00 LT | 36 | 4 |
| 310 | 4044+60.00 | 63.00 LT | 312 | 4045+00.00 | 63.00 LT | 36 | 4 |
| 244 | 4038+00.00 | 60.98 RT | 239 | 4037+10.00 | 56.00 RT | 88 | 4 |
| 239 | 4037+10.00 | 56.00 RT | 235 | 4036+60.00 | 52.44 RT | 48 | 4 |
| 244 | 4038+00.00 | 60.98 RT | 245 | 4038+40.00 | 62.83 RT | 38 | 4 |
| 245 | 4038+40.00 | 62.83 RT | 251 | 4038+80.00 | 63.00 RT | 38 | 4 |
| 251 | 4038+80.00 | 63.00 RT | 252 | 4039+20.00 | 63.00 RT | 38 | 4 |
| 252 | 4039+20.00 | 63.00 RT | 258 | 4039+60.00 | 63.00 RT | 38 | 4 |
| 258 | 4039+60.00 | 63.00 RT | 260 | 4040+00.00 | 65.94 RT | 40 | 4 |
| 260 | 4040+00.00 | 65.94 RT | 259 | 4040+40.00 | 80.11 RT | 40 | 4 |
| 259 | 4040+40.00 | 80.11 RT | 33 | 601+39.50 | 57.70 RT | 98 | 4 |
| START | 4043+21.70 | 63.90 RT | 294 | 4043+00.00 | 69.65 RT | 21 | 4 |
| 294 | 4043+00.00 | 69.65 RT | 293 | 4042+60.00 | 85.20 RT | 40 | 4 |
| 293 | 4042+60.00 | 85.20 RT | 30 | 601+40.00 | 84.64 LT | 31 | 4 |
| START | 4043+21.70 | 63.90 RT | 300 | 4043+40.00 | 63.99 RT | 17 | 4 |
| 300 | 4043+40.00 | 63.99 RT | 301 | 4043+80.00 | 63.00 RT | 38 | 4 |
| 301 | 4043+80.00 | 63.00 RT | 307 | 4044+20.00 | 63.00 RT | 38 | 4 |
| 307 | 4044+20.00 | 63.00 RT | 308 | 4044+60.00 | 63.00 RT | 38 | 4 |
| 308 | 4044+60.00 | 63.00 RT | 314 | 4045+00.00 | 61.00 RT | 38 | 4 |
| | | | | | | SUBTOTAL | 1,357 FT |

STA. 583+50 TO STA. 584+50
REMOVAL & DISPOSAL OF UNSUITABLE MATERIAL,
206 CU YD; AND
AGGREGATE SUBGRADE IMPROVEMENT, 206 CY YD
(SEE NOTES 4 & 5)

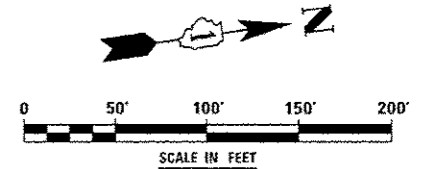
LEGEND

 UNDERCUT AREA
SEE CROSS-SECTIONS FOR INFORMATION

NOTES

- SEE DRAWING DN-01 FOR DRAINAGE NOTES AND PROPOSED DRAINAGE LEGEND.
- SEE DRAWINGS DP-05 AND DP-07 FOR PROPOSED STORM SEWER.
- UNDERDRAIN AS INDICATED SHALL BE BACK-PITCHED TO STRUCTURE AS SHOWN.
- AGGREGATE SUBGRADE IMPROVEMENT HAS BEEN PROVIDED FOR USE AT THE LOCATIONS INDICATED FOR SOILS THAT TEND TO BE UNSUITABLE OR UNSTABLE. THE ACTUAL NEED FOR REMOVAL AND REPLACEMENT WITH AGGREGATE SUBGRADE IMPROVEMENT WILL BE DETERMINED IN THE FIELD AT THE TIME OF CONSTRUCTION BY THE GEOTECHNICAL ENGINEER. ALL POTENTIALLY UNSTABLE SOILS SHOULD BE TESTED WITH A STATIC CONE PENETROMETER AND TREATED IN ACCORDANCE WITH ARTICLE 301.04 OF THE STANDARD SPECIFICATIONS AND THE UNDERCUT GUIDELINES IN THE IDOT SUBGRADE STABILITY MANUAL. IF UNSTABLE AND/OR UNSUITABLE MATERIAL IS NOT ENCOUNTERED AT THE TIME OF CONSTRUCTION, THEN THE QUANTITY SHALL BE DEDUCTED AND NO ADDITIONAL COMPENSATION WILL BE DUE TO THE CONTRACTOR.
- SEE EARTHWORK SCHEDULE FOR ADDITIONAL INFORMATION REGARDING QUANTITY.

| | |
|-------|-----------|
| TOTAL | 4 INCH |
| | 11,683 FT |



CONTINUATION OF DIEHL ROAD
(W OF IL59)

| | | | | | | | | | |
|-----------------|---------------------------------|---|---|-------------------------|---------------------------|-------------------|--------------------|--------------|-----------|
| DESIGNED P.A.D. | REVISED - ADDENDUM A 02/22/2013 | STATE OF ILLINOIS DEPARTMENT OF TRANSPORTATION | PIPE UNDERDRAINS AND UNDERCUT PLAN - ILLINOIS ROUTE 59 | | F.A.P. RTE. | SECTION | COUNTY | TOTAL SHEETS | SHEET NO. |
| DRAWN RES | REVISED - | | SCALE: AS SHOWN | SHEET NO. 5 OF 5 SHEETS | 338 | (112 & 113) WRS-G | DUPAGE | 734 | 313 |
| CHECKED JCM | REVISED - | | STA. 4023+00 TO STA. 4036+50 | | DU-05 | | CONTRACT NO. 60R31 | | |
| DATE 12/14/2012 | REVISED - | | | | ILLINOIS FED. AID PROJECT | | | | |