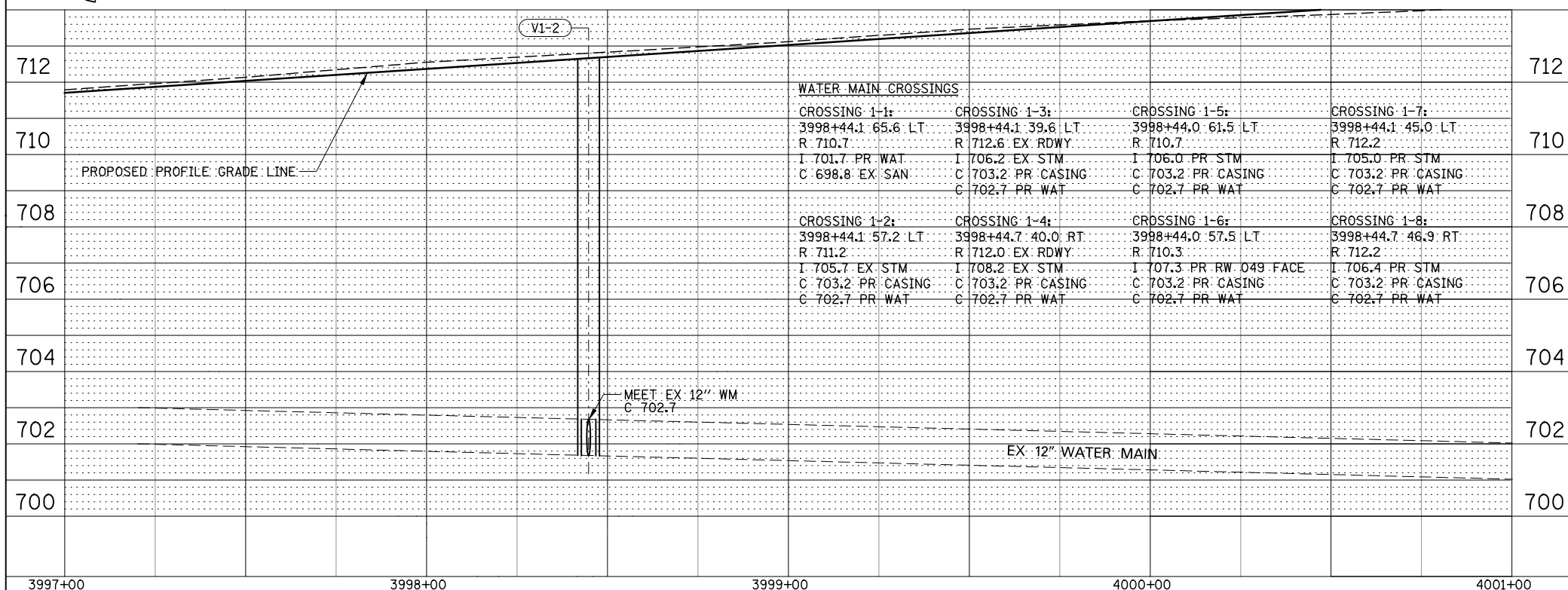
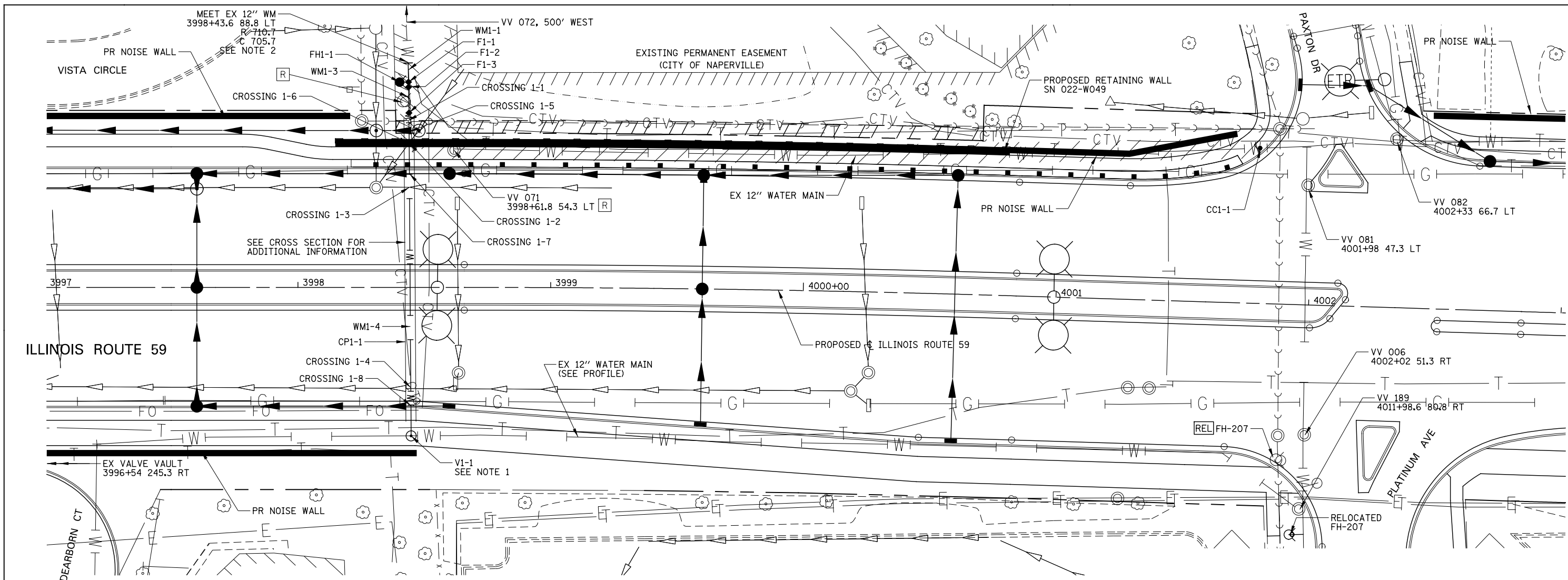


PLAN	SURVEYED	DATE
	PLOTTED	BY
	CHECKED	
	ALIGNED	
	FILED	
	NO.	
	NAME	

PROFILE	SURVEYED	DATE
	PLOTTED	BY
	CHECKED	
	STRUCTURE	
	NOTATION	
	CHKD	
	NO.	
	NAME	



WATER MAIN CROSSINGS			
CROSSING 1-1:	CROSSING 1-3:	CROSSING 1-5:	CROSSING 1-7:
3998+44.1 65.6 LT R 710.7	3998+44.1 39.6 LT R 712.6 EX RDWY	3998+44.0 61.5 LT R 710.7	3998+44.1 45.0 LT R 712.2
I 701.7 PR WAT C 698.8 EX SAN	I 706.2 EX STM C 703.2 PR CASING C 702.7 PR WAT	I 706.0 PR STM C 703.2 PR CASING C 702.7 PR WAT	I 705.0 PR STM C 703.2 PR CASING C 702.7 PR WAT
CROSSING 1-2:	CROSSING 1-4:	CROSSING 1-6:	CROSSING 1-8:
3998+44.1 57.2 LT R 711.2	3998+44.7 40.0 RT R 712.0 EX RDWY	3998+44.0 57.5 LT R 710.3	3998+44.7 46.9 RT R 712.2
I 705.7 EX STM C 703.2 PR CASING C 702.7 PR WAT	I 708.2 EX STM C 703.2 PR CASING C 702.7 PR WAT	I 707.3 PR RW 049 FACE C 703.2 PR CASING C 702.7 PR WAT	I 706.4 PR STM C 703.2 PR CASING C 702.7 PR WAT

- WATER MAIN PIPE**
 - WMI-1 7' D I WATER MAIN 12
 - WMI-2 NOT USED
 - WMI-3 6' D I WATER MAIN 12
 - WMI-4 129" D I WATER MAIN 12
- WATER MAIN VALVES**
 - V1-1 TAP VALVE & SLEEVE 12 VV TA 6 DIA TIF CL 3998+44.8 58.7 RT, R 712.5, C 702.7
- WATER MAIN CASING PIPE**
 - CPI-1 120' STL CAS P BOR/JKD 24 TRENCH BACKFILL 130.9 CU YD
- WATER MAIN FITTINGS**
 - F1-1 DI WAT MN TEE, 12X6 3998+43.8 81.2 LT, R 710.5, C 705.5
 - F1-2 DI WT MNF 12 22.50 DB VM 3998+43.8 79.2 LT, R 710.5, C 705.5
 - F1-3 DI WT MNF 12 22.50 DB VM 3998+43.9 71.2 LT, R 710.8, C 702.7
- CUT & CAP WATER MAIN**
 - CC1-1 CUT & CAP EX 12 WM 4001+78.9 61.4 LT, R 713.2, C 704.0
- FIRE HYDRANTS**
 - FH1-1 FIRE HYD W/ AUX V & VB 3998+40.4 79.0 LT, N 712.5, R 710.5, C 705.5
 - FH-207 SEE REMOVAL PLANS.
- NOTES**
 - MAKE PRESSURE CONNECTION IN VAULT. SEE STANDARD DETAIL FOR MORE INFORMATION. PRESSURE CONNECTION INCLUDED WITH COST OF TAPPING VALVE AND SLEEVE.
 - MEET EXISTING WITH NON-PRESSURE CONNECTION. ALL WORK INCLUDED IN COST OF DUCTILE WATER MAIN.

