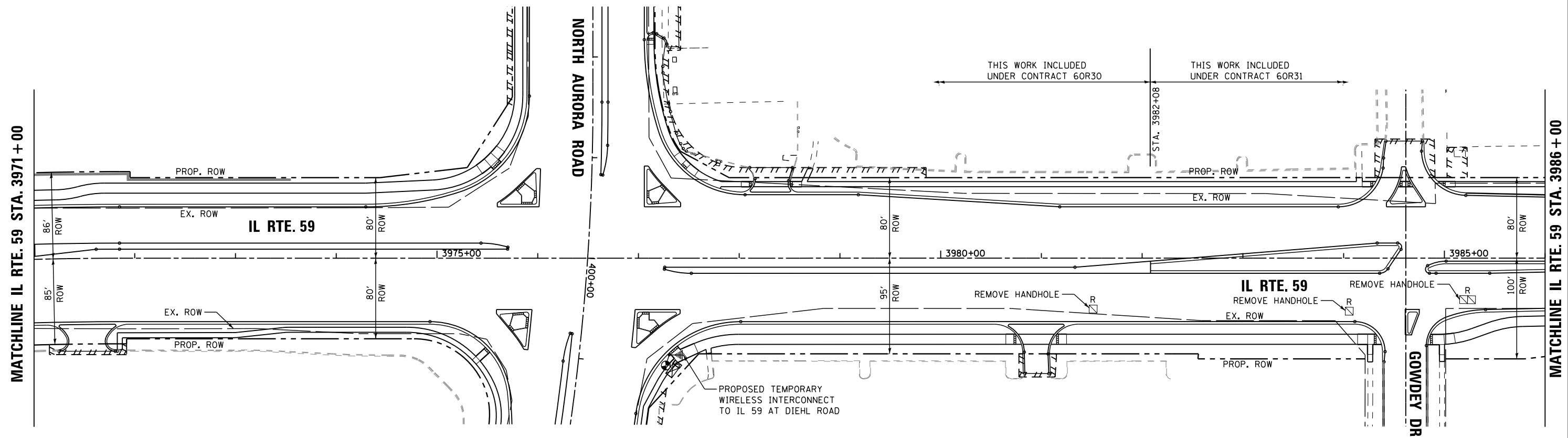


PUMP STATION  
 (CONTRACT #60P41)

MATCHLINE IL RTE. 59 STA. 3963 + 00

MATCHLINE IL RTE. 59 STA. 3971 + 00



FILE NAME =	USER NAME = *USER*	DESIGNED - DW	REVISED -
K:\Projects\090059\Design\Sheet Files\679rwa59tempintN.dgn		DRAWN - JDH	REVISED -
	PLOT SCALE = *SCALE*	CHECKED - KMM	REVISED -
	PLOT DATE = 12/6/2012	DATE -	REVISED -

**STATE OF ILLINOIS  
 DEPARTMENT OF TRANSPORTATION**

**TEMPORARY WIRELESS INTERCONNECT &  
 REMOVE EXISTING INTERCONNECT EQUIPMENT PLAN, IL ROUTE 59  
 FROM NORTH AURORA ROAD TO FERRY ROAD**  
 SCALE: 1"=50' SHEET NO. 1 OF 3 SHEETS STA. 3963+00 TO STA. 3986+00

F.A. RTE.	SECTION	COUNTY	TOTAL SHEETS	SHEET NO.
338	(112 & 113) WRS-6	DUPAGE	734	407
<b>TS-27</b>			CONTRACT NO. 60R31	
ILLINOIS FED. AID PROJECT				