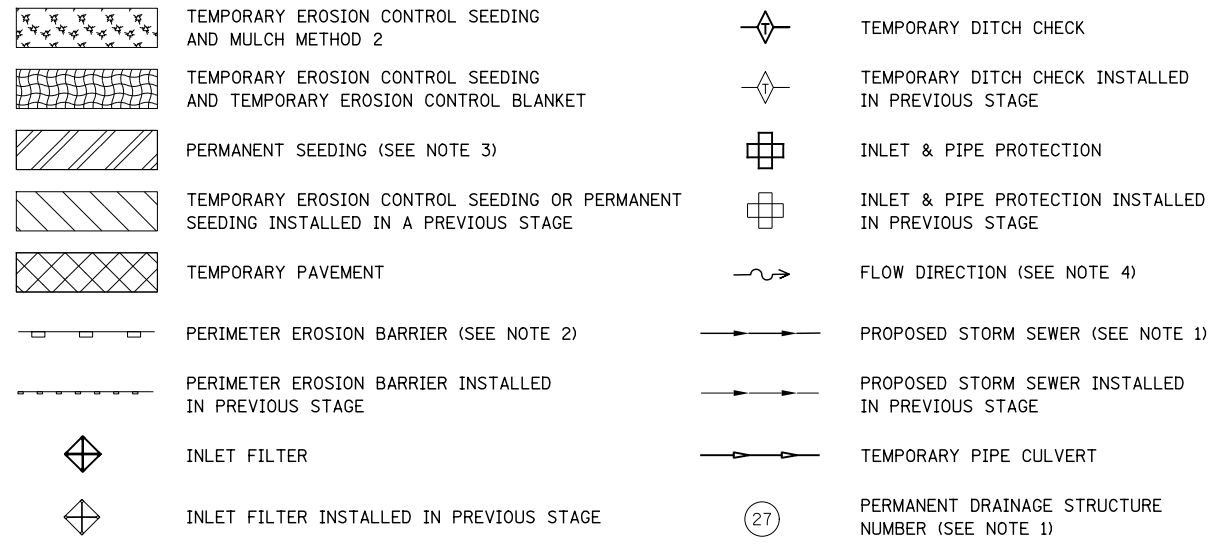


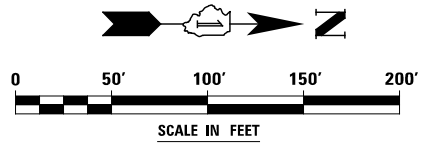
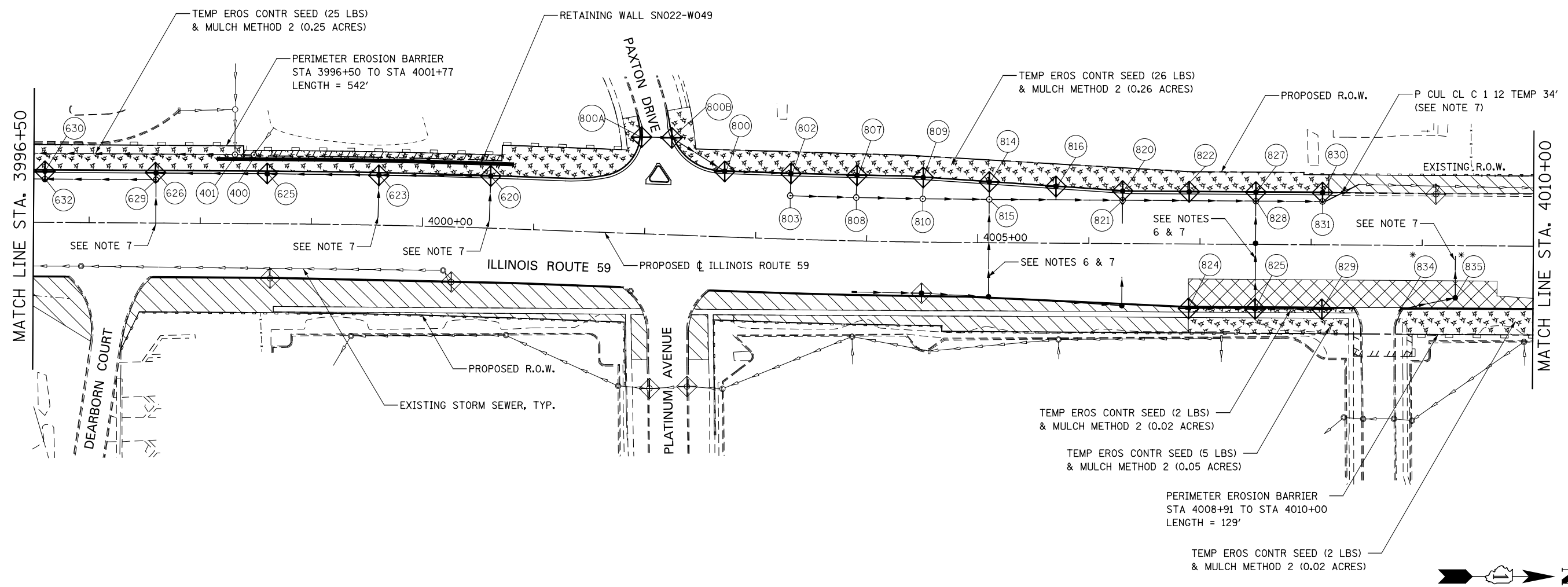
EROSION CONTROL LEGEND



(*) - SEE NOTE 5

NOTES

1. SEE PROPOSED DRAINAGE PLANS FOR STORM SEWER INFORMATION.
2. PERIMETER EROSION BARRIER SHALL BE ERECTED ADJACENT TO R.O.W., EASEMENT, AND CONSTRUCTION LIMITS AND AS DIRECTED BY THE ENGINEER.
3. SEE LANDSCAPING PLANS FOR LANDSCAPING REQUIREMENTS.
4. SEE STAGE 1 CROSS SECTIONS FOR GRADING INFORMATION.
5. PROPOSED STRUCTURE SHALL BE BURIED AND TEMPORARILY COVERED/CLOSED WITH STEEL PLATE OF THICKNESS SPECIFIED AND APPROVED BY THE ENGINEER. PAYMENT FOR THIS TEMPORARY COVER INSTALLATION AND REMOVAL SHALL BE CONSIDERED INCLUDED IN THE COST OF THE PROPOSED STRUCTURE.
6. STORM SEWER TO BE FULLY CONSTRUCTED ACROSS ENTIRE ROADWAY, USING A SINGLE LANE NIGHT TIME CLOSURE.
7. WHEN TEMPORARY OR PERMANENT STORM SEWER IS TO BE PLACED BELOW EXISTING PAVEMENT OR TEMPORARY PAVEMENT, THE EXISTING PAVEMENT OR TEMPORARY PAVEMENT WITHIN THE LIMITS OF THE TRENCHING OPERATION, SHALL BE REMOVED AND REPLACED, PAID FOR AS CLASS D PATCHES, TYPE III, 15 INCH (SPECIAL).



DESIGNED <i>PJO</i>	REVISED -	STATE OF ILLINOIS DEPARTMENT OF TRANSPORTATION	EROSION CONTROL - STAGE 1, 1A AND 1B		F.A.P. RTE.	SECTION	COUNTY	TOTAL SHEETS	SHEET NO.
DRAWN <i>KES</i>	REVISED -		ILLINOIS ROUTE 59		338	(112 & 113) WRS-6	DUPAGE	734	435
CHECKED <i>JCM</i>	REVISED -		SCALE: AS SHOWN SHEET NO. 10 OF 40 SHEETS STA. 3996+50 TO STA. 4010+00		CONTRACT NO. 60R31				
DATE <i>12/14/2012</i>	REVISED -		ILLINOIS FED. AID PROJECT						