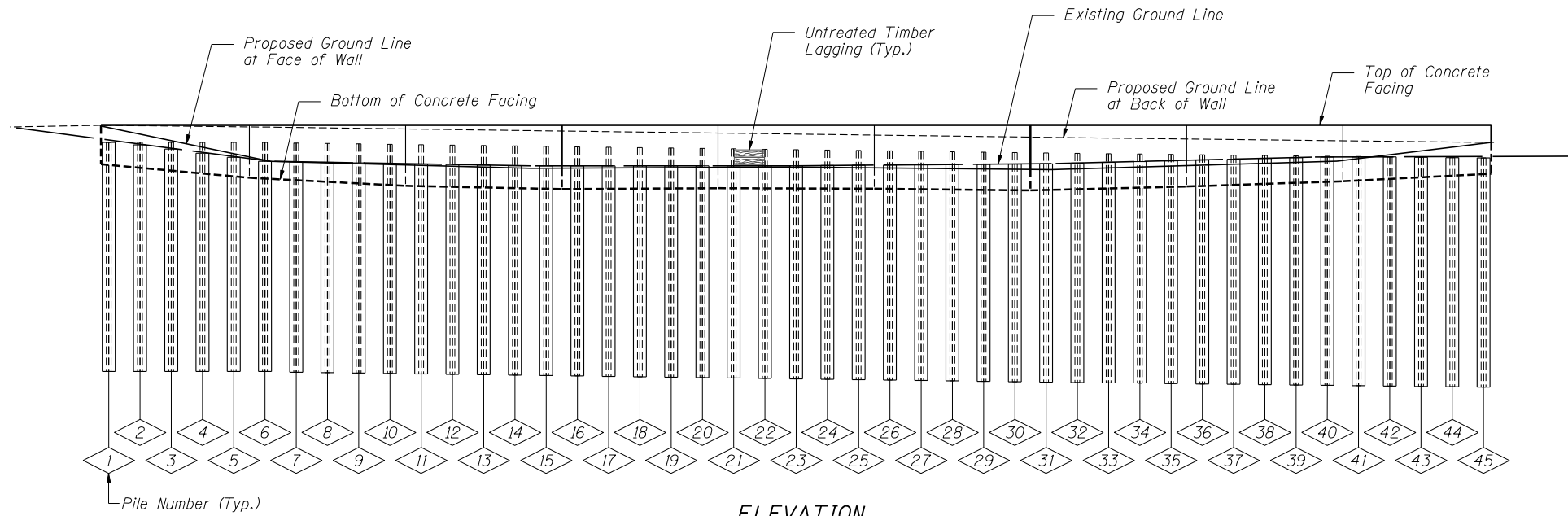


PLAN



ELEVATION

PILE SUMMARY

Pile No.	Station	Offset to $\phi$ Pile	Pile Designation	Length	Bottom Elevation	Top Elevation	Pile No.	Station	Offset to $\phi$ Pile	Pile Designation	Length	Bottom Elevation	Top Elevation	Pile No.	Station	Offset to $\phi$ Pile	Pile Designation	Length	Bottom Elevation	Top Elevation
1	4000+78.57	56.31	W18x86	22'-0"	690.33	712.33	16	3999+89.31	56.31	W18x86	22'-0"	689.91	711.91	31	3999+00.05	56.31	W18x86	22'-0"	689.31	711.31
2	4000+72.62	56.30	W18x86	22'-0"	690.33	712.33	17	3999+83.36	56.29	W18x86	22'-0"	689.87	711.87	32	3998+94.09	56.30	W18x86	22'-0"	689.28	711.28
3	4000+66.67	56.30	W18x86	22'-0"	690.33	712.33	18	3999+77.41	56.29	W18x86	22'-0"	689.83	711.83	33	3998+88.14	56.30	W18x86	22'-0"	689.24	711.24
4	4000+60.72	56.30	W18x86	22'-0"	690.33	712.33	19	3999+71.45	56.28	W18x86	22'-0"	689.79	711.79	34	3998+82.19	56.30	W18x86	22'-0"	689.21	711.21
5	4000+54.76	56.31	W18x86	22'-0"	690.33	712.33	20	3999+65.50	56.29	W18x86	22'-0"	689.75	711.75	35	3998+76.24	56.31	W18x86	22'-0"	689.18	711.18
6	4000+48.82	56.31	W18x86	22'-0"	690.33	712.33	21	3999+59.55	56.29	W18x86	22'-0"	689.71	711.71	36	3998+70.29	56.31	W18x86	22'-0"	689.14	711.14
7	4000+42.87	56.30	W18x86	22'-0"	690.26	712.26	22	3999+53.60	56.28	W18x86	22'-0"	689.67	711.67	37	3998+64.32	56.31	W18x86	22'-0"	689.11	711.11
8	4000+36.91	56.30	W18x86	22'-0"	690.22	712.22	23	3999+47.65	56.29	W18x86	22'-0"	689.63	711.63	38	3998+58.32	56.31	W18x86	22'-0"	689.07	711.07
9	4000+30.96	56.30	W18x86	22'-0"	690.18	712.18	24	3999+41.70	56.29	W18x86	22'-0"	689.59	711.59	39	3998+52.32	56.31	W18x86	22'-0"	689.04	711.04
10	4000+25.01	56.31	W18x86	22'-0"	690.15	712.15	25	3999+35.74	56.31	W18x86	22'-0"	689.55	711.55	40	3998+46.32	56.31	W18x86	22'-0"	689.01	711.01
11	4000+19.06	56.31	W18x86	22'-0"	690.11	712.11	26	3999+29.80	56.31	W18x86	22'-0"	689.51	711.51	41	3998+40.33	56.31	W18x86	22'-0"	688.97	710.97
12	4000+13.11	56.30	W18x86	22'-0"	690.07	712.07	27	3999+23.85	56.30	W18x86	22'-0"	689.47	711.47	42	3998+34.33	56.31	W18x86	22'-0"	688.94	710.94
13	4000+07.16	56.30	W18x86	22'-0"	690.03	712.03	28	3999+17.90	56.30	W18x86	22'-0"	689.43	711.43	43	3998+28.33	56.31	W18x86	22'-0"	688.91	710.91
14	4000+01.20	56.30	W18x86	22'-0"	689.99	711.99	29	3999+11.94	56.30	W18x86	22'-0"	689.39	711.39	44	3998+22.33	56.31	W18x86	22'-0"	688.87	710.87
15	3999+95.25	56.31	W18x86	22'-0"	689.95	711.95	30	3999+05.99	56.31	W18x86	22'-0"	689.35	711.35	45	3998+16.33	56.31	W18x86	22'-0"	688.84	710.84

BILL OF MATERIAL

Item	Unit	Quantity
Furnishing Soldier Piles (W Section)	Foot	990
Drilling and Setting Soldier Piles (In Soil)	Cu Ft	4,635
Untreated Timber Lagging	Sq Ft	732
Stud Shear Connectors	Each	197

Note: All offsets are to the left of centerline of IL Rte 59

FILE NAME = ...60R31-W049-003-P1.dwg

**ZROKA** engineering  
 Zroka Engineering, P.C.  
 4216 North Hermitage  
 Chicago, IL 60613

DESIGNED - JLA	REVISED -
CHECKED - LAS	REVISED -
DRAWN - SAW	REVISED -
CHECKED - JLA	REVISED -
SCALE - NONE	
DATE - 12/14/2012	

**STATE OF ILLINOIS**  
**DEPARTMENT OF TRANSPORTATION**

**SOLDIER PILE LAYOUT**  
**STA. 3998 + 14.82 TO STA. 4000 + 80.06 SN 022-W049**

SHEET NO. SB-3 OF SB-10 SHEETS

F.A.P. RTE.	SECTION	COUNTY	TOTAL SHEETS	SHEET NO.
338	(112 & 113) WRS-6	DUPAGE	734	501
CONTRACT NO. 60R31				
ILLINOIS FED. AID PROJECT				