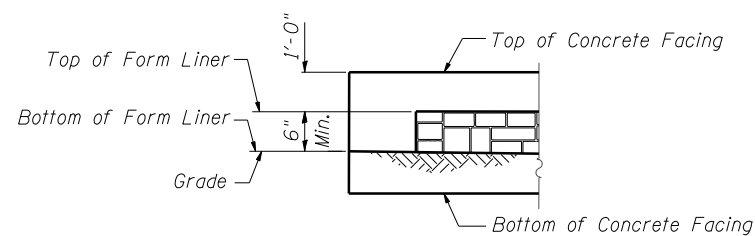
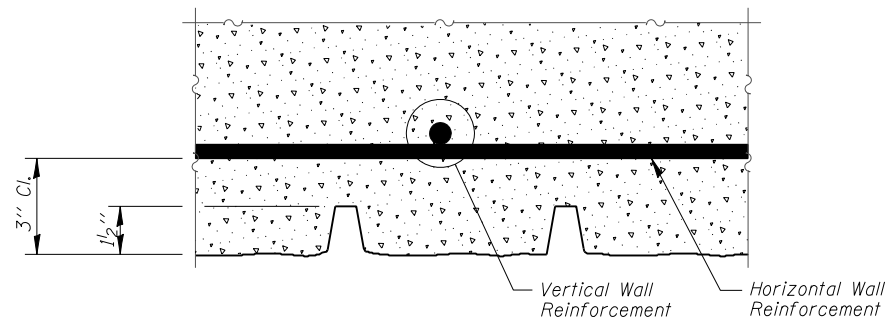


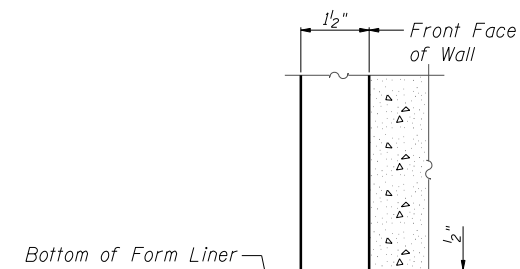
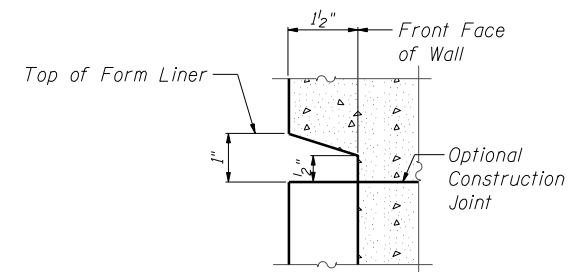
**ELEVATION - FORM LINER**



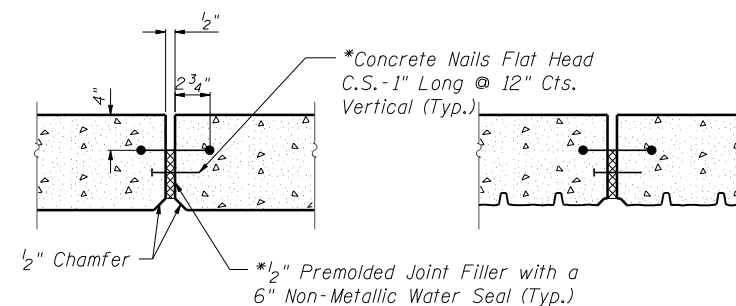
**END FORM LINER FINISH**



**PLAN - FORM LINER**

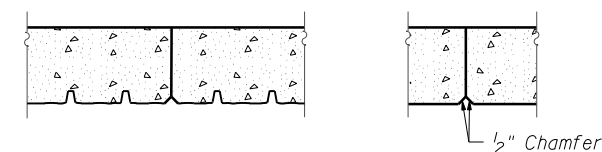


**SECTION A-A**



**EXPANSION JOINT DETAIL**

\*Cost included with "Concrete Structures"



**CONSTRUCTION JOINT DETAIL**

**FORM LINER ELEVATION TABLE**

Station	Form Liner Top Elevation	Form Liner Bottom Elevation
4020+80.00	None	None
4020+76.29	712.00	710.66
4020+55.83	712.00	704.36
4020+51.24	712.00	703.10
4020+51.24	712.00	708.67
4020+40.90	712.00	708.67
4020+40.90	712.00	703.10
4020+32.83	712.00	703.65
4020+08.83	712.00	705.28
4019+80.00	712.00	706.40
4019+50.00	712.00	707.00
4019+20.00	712.00	707.60
4018+90.00	712.00	708.10
4018+60.00	712.00	708.40
4018+33.94	712.00	711.50
4018+30.06	None	None

FILE NAME = ...60R31-W051-009-ArchFinish.dgn



Zroka Engineering, P.C.  
4216 North Hermitage  
Chicago, IL 60613

DESIGNED - JLA	REVISED -
CHECKED - LAS	REVISED -
DRAWN - SAW	REVISED -
CHECKED - JLA	REVISED -
SCALE - NONE	
DATE - 12/14/2012	

STATE OF ILLINOIS  
DEPARTMENT OF TRANSPORTATION

ARCHITECTURAL FINISH DETAILS  
STA. 4018+30.06 TO STA. 4020+80.00 S.N. 022-W051

SHEET NO. SC-9 OF SC-12 SHEETS

F.A.P. RTE.	SECTION	COUNTY	TOTAL SHEETS	SHEET NO.
338	(112 & 113) WRS-6	DUPAGE	734	517
CONTRACT NO. 60R31				
ILLINOIS FED. AID PROJECT				