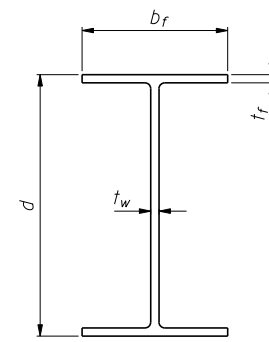
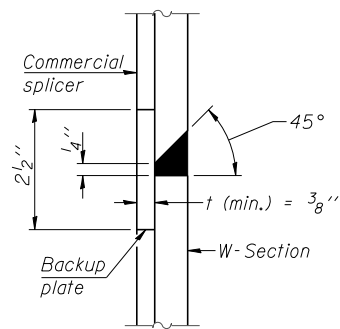


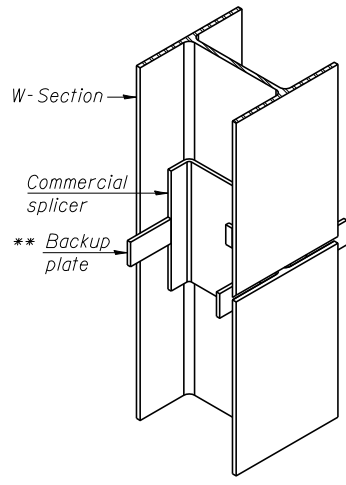
ELEVATION



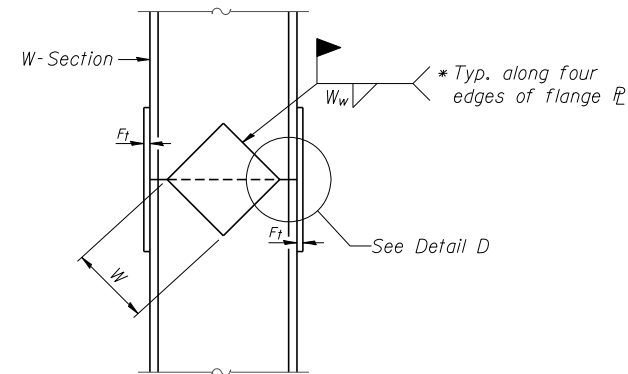
Designation	Depth d	Flange width b_f	Flange thickness t_f	Web thickness t_w	Encasement diameter A
W36x282	36 1/2"	16 5/8"	1 9/16"	7/8"	48"
W21x122	21 5/8"	12 3/8"	1 5/16"	5/8"	30"



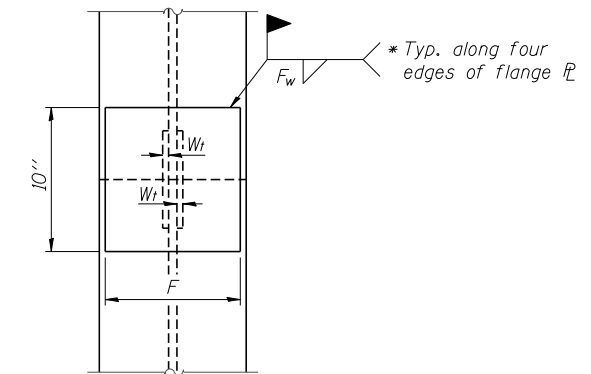
DETAIL "B"



ISOMETRIC VIEW

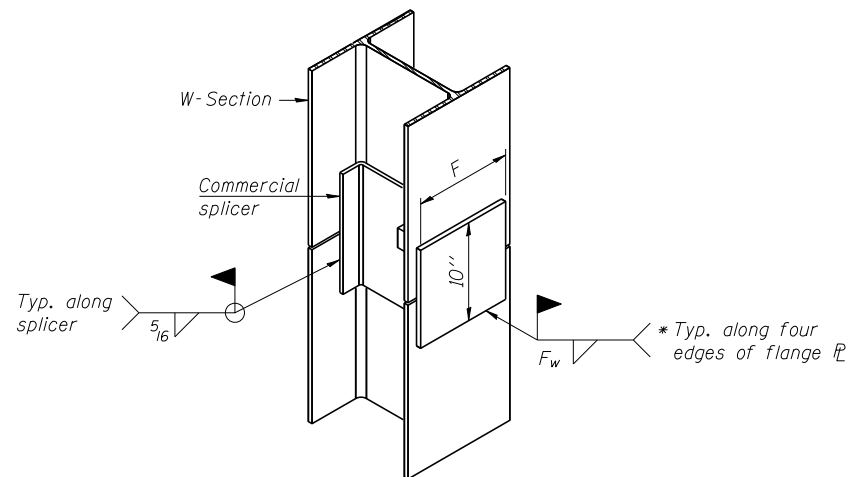


ELEVATION



END VIEW

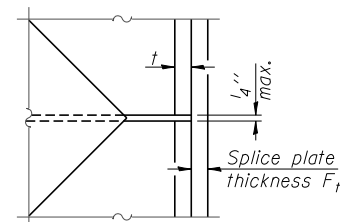
WELDED COMMERCIAL SPLICE



ISOMETRIC VIEW

WELDED COMMERCIAL SPLICE ALTERNATE

- * Interrupt welds 1/4" from end of web and/or each flange.
- ** Remove portions of backup plates that extend outside the flanges.



DETAIL D

WELDED PLATE FIELD SPLICE

Designation	F	F_t	F_w	W	W_t	W_w
W36x282	13 1/2"	2"	1 1/4"	22"	3/4"	1/2"
W21x122	10"	1 1/4"	3/4"	12 3/4"	5/8"	3/8"

Note:
The steel W-Sections shall be according to AASHTO M270 Grade 36.

FILE NAME = ...60R31-W051-010-FileSpliceDetail.dgn



Zroka Engineering, P.C.
4216 North Hermitage
Chicago, IL 60613

DESIGNED - JLA	REVISED -
CHECKED - LAS	REVISED -
DRAWN - SAW	REVISED -
CHECKED - JLA	REVISED -

STATE OF ILLINOIS
DEPARTMENT OF TRANSPORTATION

PILE SPLICE DETAILS
STA. 4018 + 30.00 TO STA. 4020 + 80.00 S.N. 022-W051

SHEET NO. SC-10 OF SC-12 SHEETS

F.A.P. RTE.	SECTION	COUNTY	TOTAL SHEETS	SHEET NO.
338	(112 & 113) WRS-6	DUPAGE	734	518
CONTRACT NO. 60R31				

ILLINOIS FED. AID PROJECT