

Bench Mark: Cross "+" at north end of the east bridge wall, IL Route 59 over Interstate Route 88  
 Elev. 731.62  
 Existing Structure: None

**INDEX OF SHEETS**

- SF-1. General Plan and Elevation
- SF-2. Wall Plan and Elevation
- SF-3. Wall Section and Details
- SF-4. Soil Boring Logs

**GENERAL NOTES**

1. Reinforcement bars designated (E) shall be epoxy coated.
2. Concrete sealer shall be applied to exposed surfaces of the front face and top of wall.

**DESIGN SPECIFICATIONS**  
 2002 AASHTO Standard Specifications  
 For Highway Bridges, 17th Edition

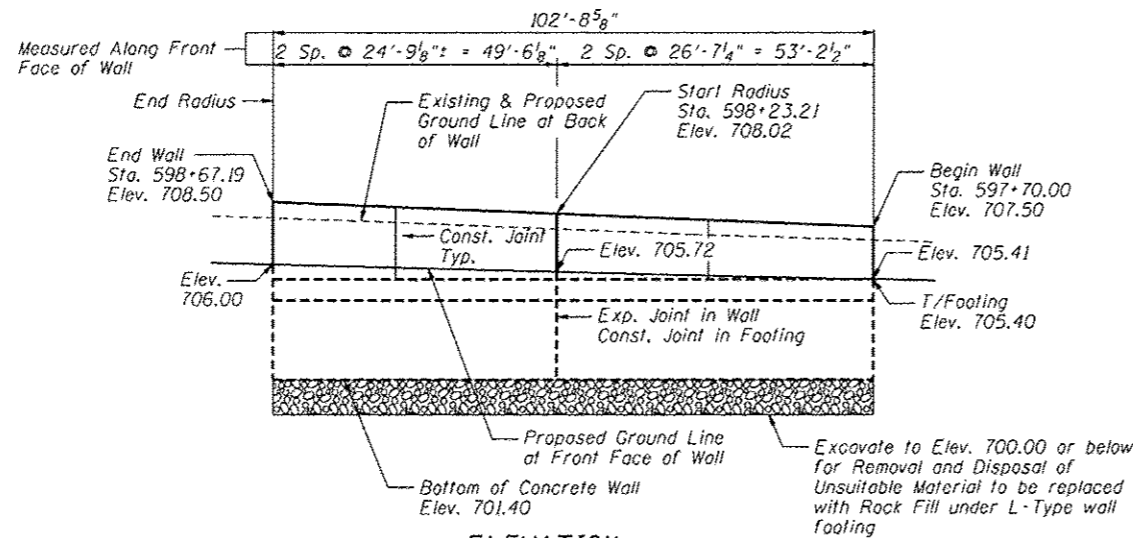
**DESIGN STRESSES**

**FIELD UNITS**

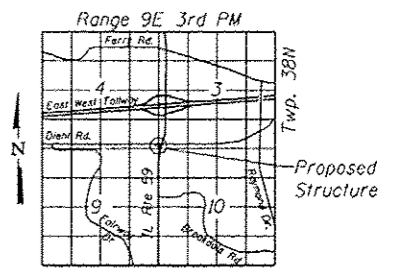
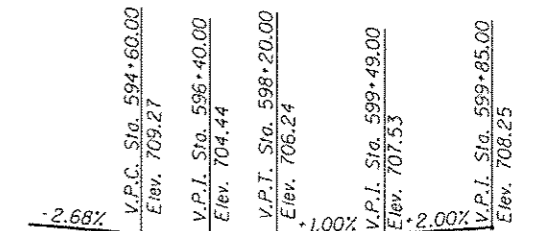
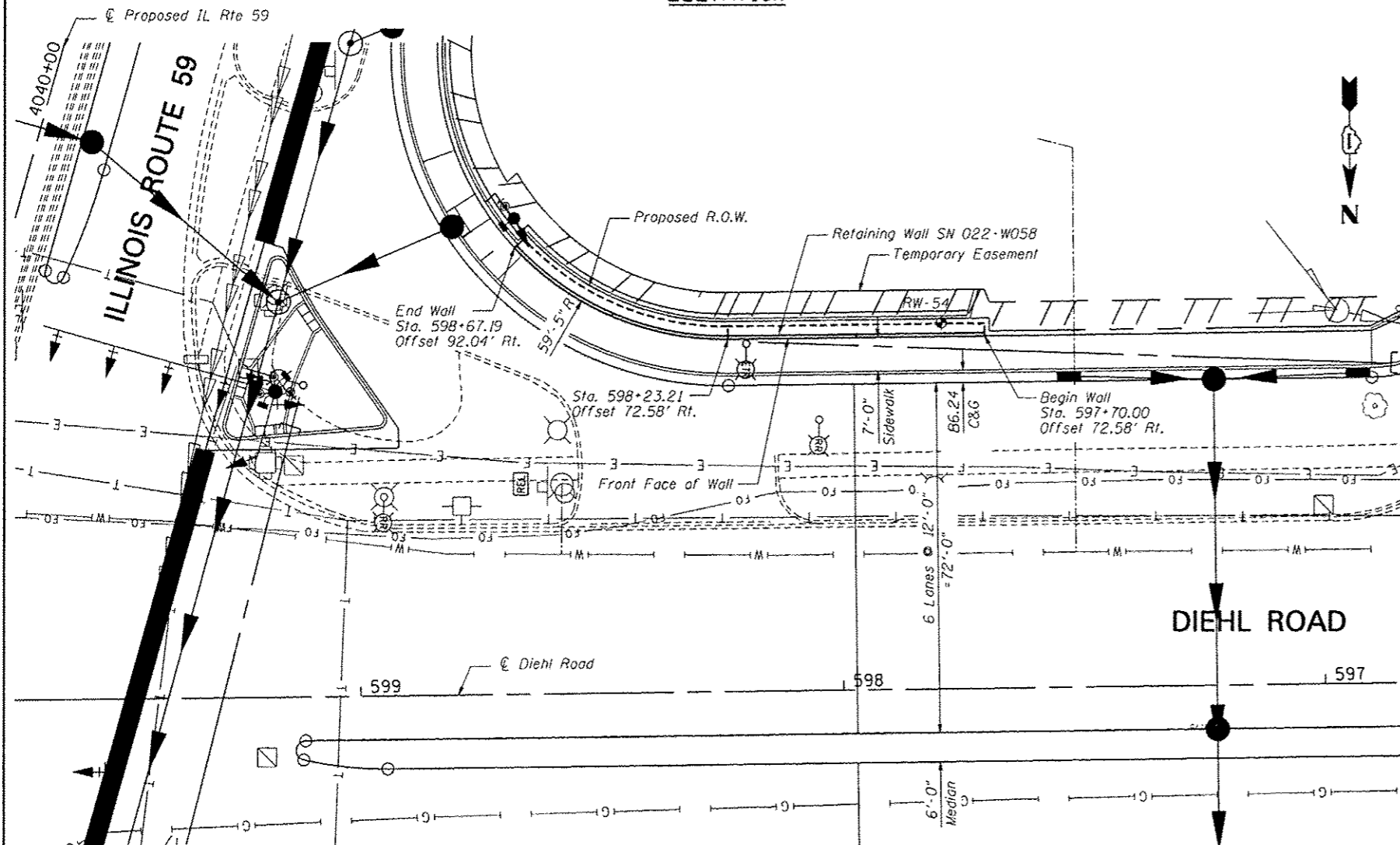
$f'_c = 3,500$  psi  
 $f_y = 60,000$  psi (reinforcement)

**TOTAL BILL OF MATERIAL**

| ITEM  | UNIT    | TOTAL |
|---|---------|-------|
| Structure Excavation                        | Cu. Yd. | 130   |
| Concrete Structures                         | Cu. Yd. | 23.1  |
| Concrete Sealer                             | Sq. Ft. | 387   |
| Reinforcement Bars, Epoxy Coated            | Pound   | 1,820 |
| Removal and Disposal of Unsuitable Material | Cu. Yd. | 21    |
| Rock Fill                                   | Cu. Yd. | 21    |
| Granular Backfill for Structures            | Cu. Yd. | 15    |



*Deborah A. Zroka* 12/14/12  
 Signature Date  
 November 30, 2014  
 Expires



**GENERAL PLAN AND ELEVATION**  
 IL RTE 59 FAP RTE 338  
 SECTION (112 & 113) WRS-6  
 DUPAGE COUNTY  
 STA. 597+70.00 TO STA. 598+67.19  
 SN 022-W058

Note:  
 Offsets are measured from the  $\hat{C}$  Proposed Diehl Road to the front face of the wall.



SCALE - NONE  
 DATE - 12/14/2012

DESIGNED - LAS  
 CHECKED - DAZ  
 DRAWN - SAW  
 DATE - 12/14/2012

REVISED -  
 REVISED -  
 REVISED -  
 REVISED -

STATE OF ILLINOIS  
 DEPARTMENT OF TRANSPORTATION

GENERAL PLAN AND ELEVATION  
 STA. 597+70.00 TO STA. 598+67.19 SN 022-W058

SHEET NO. SF-1 OF SF-4 SHEETS

| F.A.P. RTE. | SECTION           | COUNTY | TOTAL SHEETS | SHEET NO. |
|-------------|-------------------|--------|--------------|-----------|
| 338         | (112 & 113) WRS-6 | DUPAGE | 734          | 539       |

CONTRACT NO. 60R31  
 ILLINOIS FED. AID PROJECT