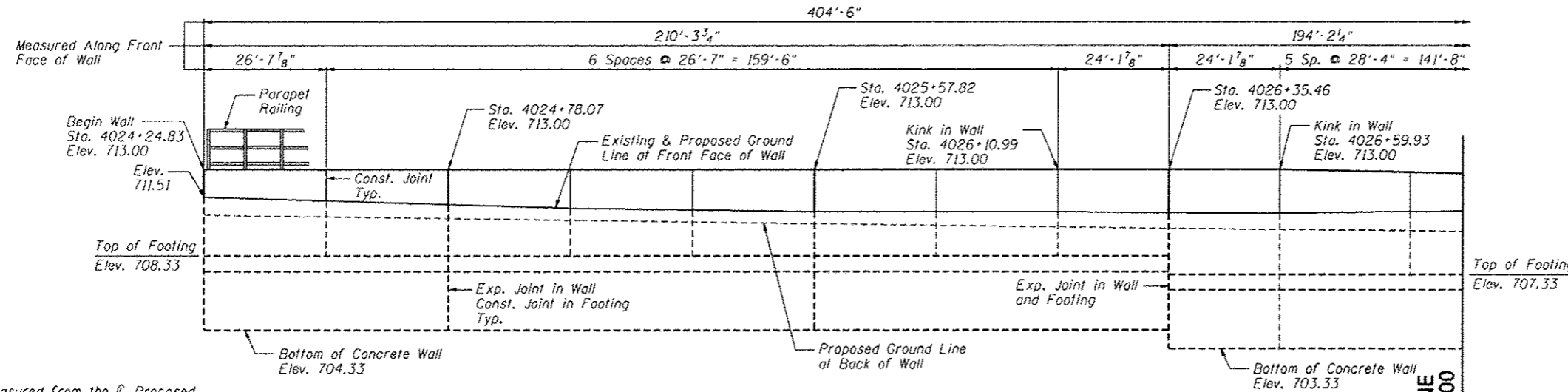


Bench Mark: Square "□" on top north end of headwall, west side of IL Rte 59, 75' south of centerline of Argyll Lane  
Sta. 4020+14, 37' Lt., Elev. 708.12

Existing Structure: None

**GENERAL NOTES**

1. Reinforcement bars designated (E) shall be epoxy coated.
2. Concrete sealer shall be applied to exposed surfaces of the front face, back face and top of wall.



Note:  
Offsets are measured from the  $\epsilon$  Proposed IL Rte. 59 to the front face of the wall.

**DEVELOPED ELEVATION**

MATCH LINE  
STA. 4027+00

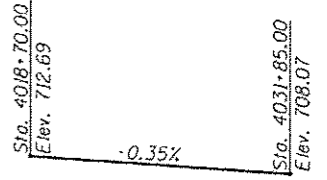
**HORIZONTAL CURVE DATA**

Proposed Curve PRIL 59-7  
PI Sta. = 4032+07.95  
 $\Delta = 15^\circ 24' 28''$  (RT)  
D = 1° 17' 54"  
R = 4,413.03'  
T = 596.97'  
L = 1,186.73'  
E = 40.19'  
P.C. Sta. = 4026+10.99  
P.T. Sta. = 4037+97.72

**DESIGN SPECIFICATIONS**  
2002 AASHTO Standard Specifications  
for Highway Bridges, 17th Edition

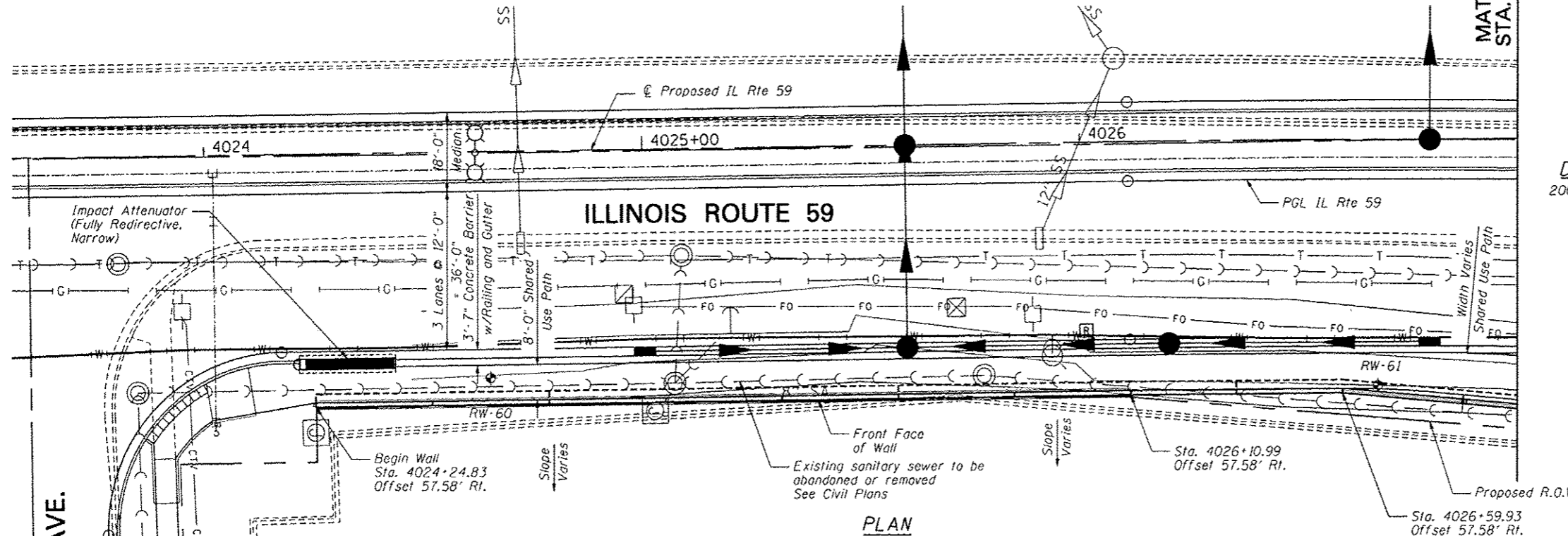
**DESIGN STRESSES**

**FIELD UNITS**  
 $f'_c = 3,500$  psi  
 $f_y = 60,000$  psi (reinforcement)

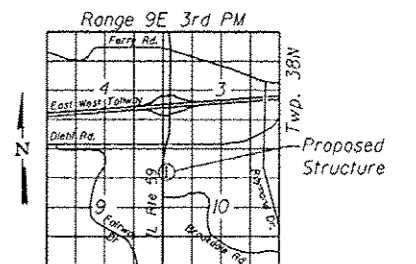


**PROFILE GRADE**

(along edge of pavement  
proposed IL Route 59)



**PLAN**



**LOCATION SKETCH**

**INDEX OF SHEETS**

- SG-1. General Plan and Elevation
- SG-2. General Plan and Elevation 2
- SG-3. Wall Plan and Elevation 1
- SG-4. Wall Plan and Elevation 2
- SG-5. Wall Plan and Elevation 3
- SG-6. Wall Plan and Elevation 4
- SG-7. Wall Section and Details
- SG-8. Parapet Railing
- SG-9. Boring Logs

**GENERAL PLAN AND ELEVATION**

IL RTE 59 FAP RTE 338

SECTION (112 & 113) WRS-6

DUPAGE COUNTY

STA. 4024+24.83 TO STA. 4028+32.00

SN 022-W059



*Deborah A. Zroka* 12-14-12  
Signature Date  
November 30, 2014  
Expires

STATE OF ILLINOIS  
DEPARTMENT OF TRANSPORTATION

GENERAL PLAN AND ELEVATION  
STA. 4024 + 24.83 TO STA. 4028 + 32.00 SN 022-W059

F.A.P. RTE.	SECTION	COUNTY	TOTAL SHEETS	SHEET NO.
338	(112 & 113) WRS-6	DUPAGE	734	543
			CONTRACT NO. 60R31	

**ZROKA** engineering  
Zroka Engineering, P.C.  
4216 North Hermitage  
Chicago, IL 60613

DESIGNED	REVISIONS
LAS	-
CHECKED	DAZ
DRAWN	SAW
CHECKED	LAS

SCALE - NONE  
DATE - 12/14/2012

SHEET NO. SG-1 OF SG-9 SHEETS

ILLINOIS FED. AID PROJECT