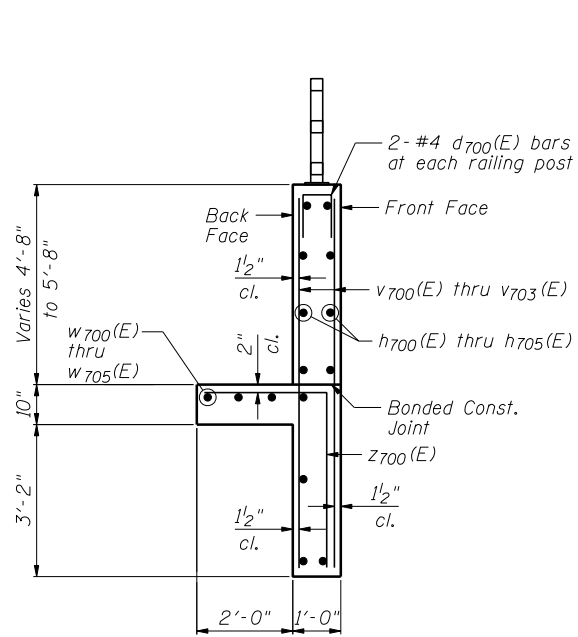


Note:
Granular Backfill for Structures shall be compacted.

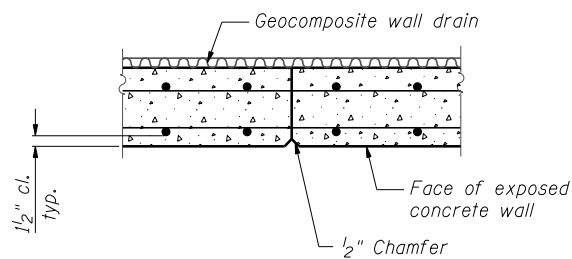
TYPICAL SECTION

Sta. 4024+24.83 to Sta. 4028+32.00

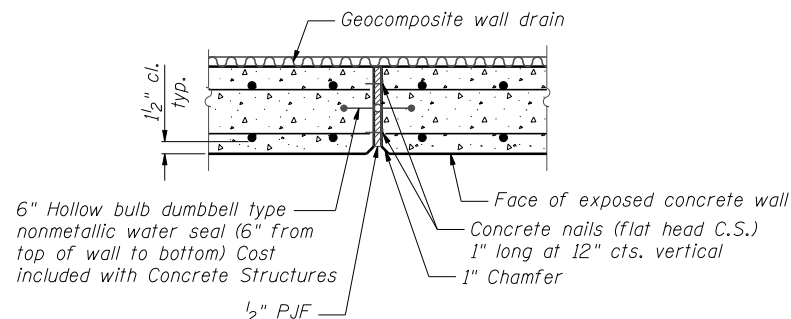


SECTION A-A

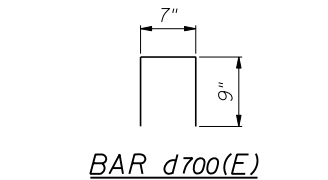
Maximum Soil Bearing Pressure = 1,670 psf



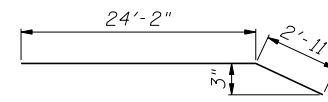
CONSTRUCTION JOINT DETAIL



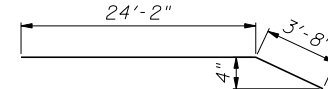
EXPANSION JOINT DETAIL



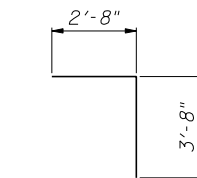
BAR d700(E)



BAR h703(E)



BAR w703(E)



BAR z700(E)

BILL OF MATERIAL

Bar	No.	Size	Length	Shape
d700(E)	90	#4	2'-1"	□
h700(E)	102	#4	29'-7"	—
h701(E)	24	#4	26'-3"	—
h702(E)	18	#4	23'-10"	—
h703(E)	20	#4	27'-1"	—
h704(E)	68	#4	31'-3"	—
h705(E)	44	#4	28'-0"	—
v700(E)	442	#4	8'-4"	—
v701(E)	166	#4	9'-1"	—
v702(E)	116	#4	8'-9"	—
v703(E)	116	#4	8'-5"	—
w700(E)	4	#5	30'-4"	—
w701(E)	24	#5	30'-3"	—
w702(E)	4	#5	23'-10"	—
w703(E)	4	#5	27'-10"	—
w704(E)	20	#5	32'-0"	—
w705(E)	4	#5	28'-0"	—
z700(E)	420	#4	6'-4"	└
Item		Unit	Quantity	
Concrete Structures		Cu. Yd.	159.2	
Reinforcement Bars, Epoxy Coated		Pound	13,920	
Geocomposite Wall Drain		Sq. Yd.	111	
Granular Backfill For Structures		Cu. Yd.	74	

FILE NAME = ...60R31-W059-007-Details.dgn

DESIGNED - LAS	REVISED -
CHECKED - DAZ	REVISED -
DRAWN - SAW	REVISED -
CHECKED - LAS	REVISED -

F.A.P. RTE.	SECTION	COUNTY	TOTAL SHEETS	SHEET NO.
338	(112 & 113) WRS-6	DUPAGE	734	549
CONTRACT NO. 60R31				
ILLINOIS FED. AID PROJECT				