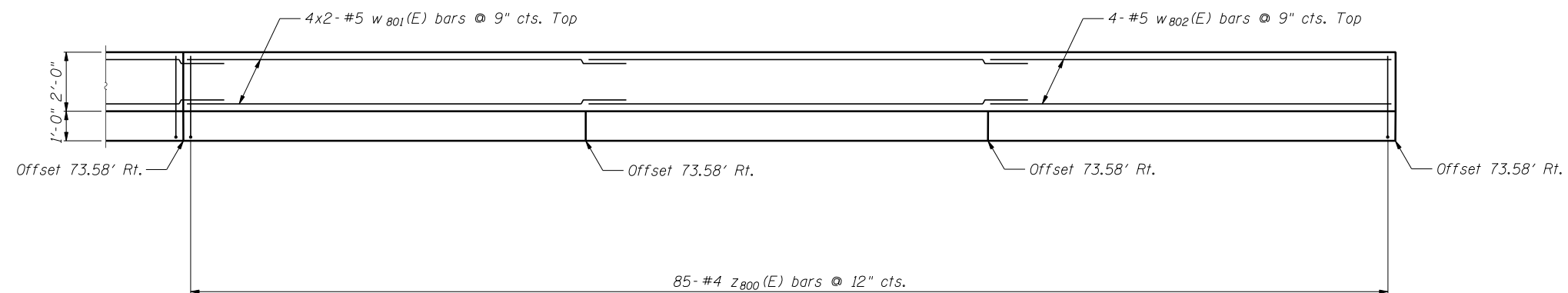


↙ A
ELEVATION



PLAN

Notes:

Minimum lap for #4 bar is 2'-11", #5 bar is 3'-8".

Bars indicated thus: 6x2-#4 etc. indicates 6 lines of bars with 2 lengths per line.

See Sheet SH-4 for Section A-A, Details and Bill of Material.



DESIGNED - LAS	REVISED -
CHECKED - DAZ	REVISED -
DRAWN - SAW	REVISED -
CHECKED - LAS	REVISED -

**STATE OF ILLINOIS
DEPARTMENT OF TRANSPORTATION**

**WALL PLAN AND ELEVATION 2
STA. 4028 + 60.03 TO STA. 4030 + 44.81 SN 022-W060**

F.A.P. RTE.	SECTION	COUNTY	TOTAL SHEETS	SHEET NO.
338	(112 & 113) WRS-6	DUPAGE	734	554
CONTRACT NO. 60R31				

SHEET NO. SH-3 OF SH-6 SHEETS

ILLINOIS FED. AID PROJECT

FILE NAME = ...60R31-W060-003-WallPlan-Elev2.dgn