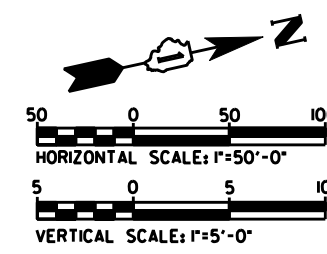
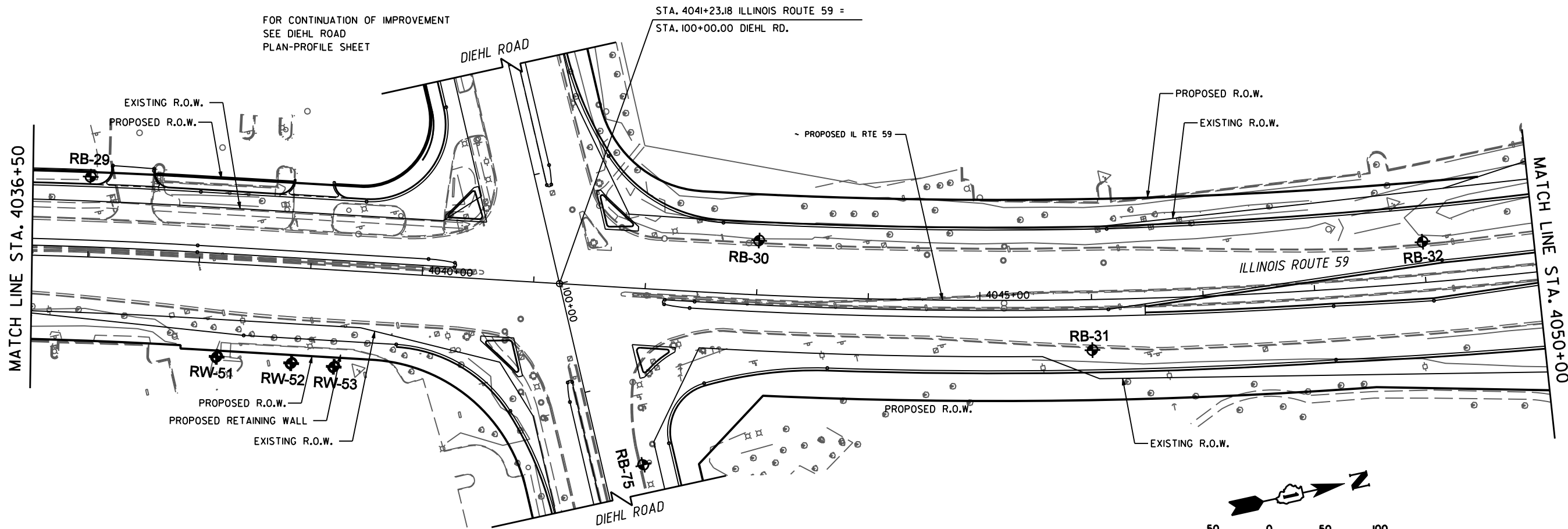
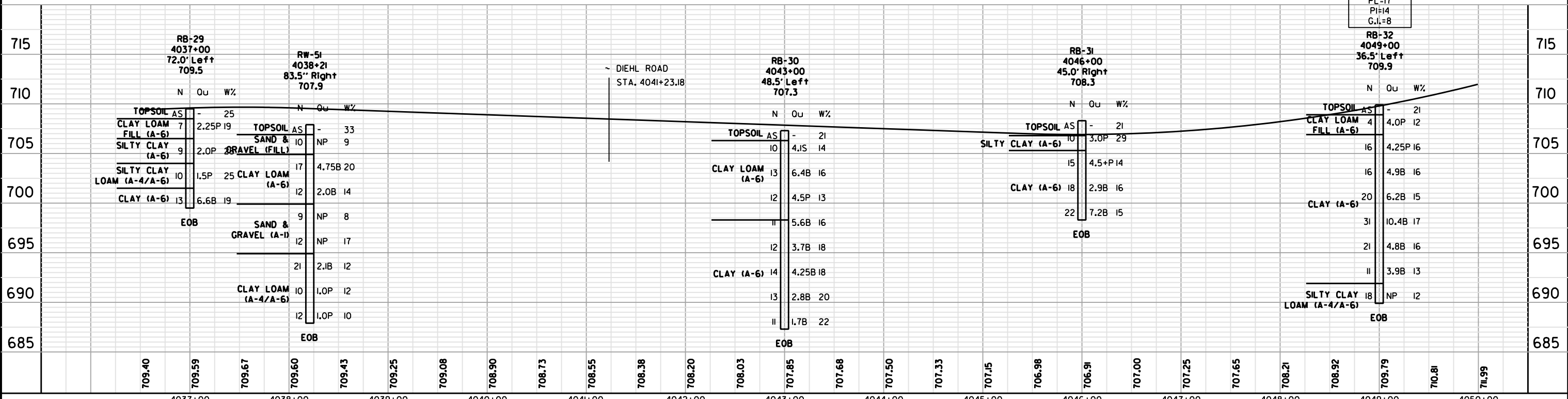


PLAN	SURVEYED	DATE
	PLOTTED	
	GRADES CHECKED	
	STRUCTURE NOTATIONS CHECKED	
	NOTE BOOK NO.	
	FILE NAME	

PROFILE	SURVEYED	DATE
	PLOTTED	
	GRADES CHECKED	
	STRUCTURE NOTATIONS CHECKED	
	NOTE BOOK NO.	
	FILE NAME	



⑩
1.0'-2.5'
CLAY LOAM
(A-6)
LL=31
PL=17
PI=14
G.I.=8



Geo Services, Inc. Geotechnical, Environmental & Civil Engineering 805 Ashurst Court, Suite 204 Naperville, Illinois 60563 (630) 355-2838	USER NAME :	DESIGNED - RWC	REVISED -	STATE OF ILLINOIS DEPARTMENT OF TRANSPORTATION	SOIL BORING PLAN / PROFILE ILLINOIS ROUTE 59		F.A.P. RTE.	SECTION	COUNTY	TOTAL SHEETS	SHEET NO.
	PLOT SCALE :	DRAWN - RWC	REVISED -		338/IL 59	482-8-133-WRS-5	DUPAGE	734	563		
	PLOT DATE :	CHECKED - AJP	REVISED -		SCALE: SHEET NO. OF SHEETS STA. 4036+50 TO STA. 4050+00		CONTRACT 60R31		FED. ROAD DIST. NO. ILLINOIS FED. AID PROJECT		
	DATE - 3/24/2011	REVISED -									