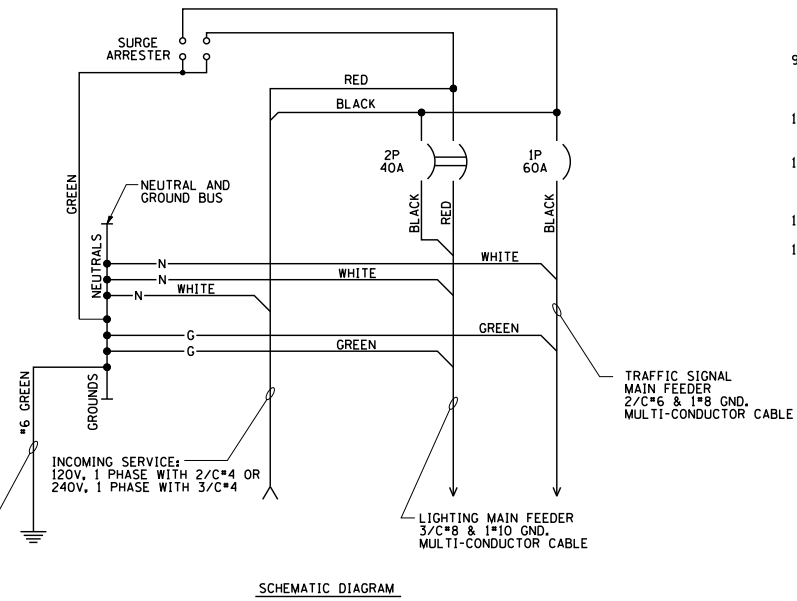


DISCONNECT MOUNTING DETAIL
N.T.S.



SCHEMATIC DIAGRAM

- NOTES:**
- ELECTRIC SERVICE SHALL BE OF THE VOLTAGE INDICATED OR DESIGNATED BY THE ENGINEER, AND SERVICE DROP CABLE SHALL BE COMPATIBLE WITH THE SERVICE ACCORDINGLY. SOME INSTALLATIONS MAY CALL FOR SERVICE ENTRANCE EQUIPMENT SUITABLE FOR 3-WIRE SERVICE EVEN THOUGH INITIALLY WIRED FOR 2-WIRE SERVICE.
 - THE POLE-MOUNTED ELECTRIC SERVICE BOX DETAIL DEPICTS THE BASIC CONSTRUCTION OF THE EQUIPMENT. SLIGHT MODIFICATIONS APPLY FOR DIFFERING SERVICES AND APPLICATIONS AS FOLLOWS:
 TYPE A FULLY EQUIPPED FOR 240/120V, 3W SERVICE, COMPLETE WITH LIGHTING MAIN BREAKER
 TYPE AI FULLY EQUIPPED FOR 240/120V, 3W SERVICE, BLANK COVER IN LIEU OF LIGHTING MAIN BREAKER
 TYPE B EQUIPPED FOR 120V, SERVICE, COMPLETE WITH 1P, 60A, TRAFFIC SIGNALS MAIN BREAKER
 TYPE BI EQUIPPED FOR 120V, SERVICE, COMPLETE WITH 1P, 40A, TRAFFIC SURVEILLANCE MAIN BREAKER
 - THE ELECTRIC SERVICE EQUIPMENT ASSEMBLY SHALL BE UL LISTED AS SUITABLE FOR USE AS SERVICE ENTRANCE EQUIPMENT.
 - THE ELECTRIC SERVICE EQUIPMENT ENCLOSURE SHALL BE NEMA 4X STAINLESS STEEL, NOMINALLY 12\"/>



6\"/>

FILE NAME = W:\diststd\22x34\be230.dgn	USER NAME = gaglianobt	DESIGNED - DRAWN -	REVISED - R. TOMSONS 08-13-04
PLOT SCALE = 50.0000 ' / IN.	CHECKED -	REVISOR -	DATE -
PLOT DATE = 1/4/2008	DATE -	REVISOR -	DATE -

STATE OF ILLINOIS
DEPARTMENT OF TRANSPORTATION

COMBINATION LIGHTING & TRAFFIC POLE
MOUNTED ELECTRIC SERVICE BOX DETAIL

SCALE: NONE SHEET NO. 1 OF 1 SHEETS STA. TO STA.

F.A. RTE.	SECTION	COUNTY	TOTAL SHEETS	SHEET NO.
338	(112 & 113) WRS-6	DUPAGE	734	573
BE-230		CONTRACT NO. 60R31		
FED. ROAD DIST. NO. 1 ILLINOIS FED. AID PROJECT				