

05-24-13 SPECIAL LETTING ITEM 026

FOR INDEX OF SHEETS, SEE SHEET NO. 1

- 2. Location 3 map
- 3. Summary of Quantities
- 4. General Notes
- 5-8 Plan Sheets

STANDARDS

701101-03

701106-02

701201-04

701901-02

ADT AND TRUCKS

Location 1 2,750 Trucks 7.64%

Location 2 6,300 Trucks 9.31%

Location 3 19,100 Trucks 3.53%

Location 4 5,300 Trucks 17.31%

J.U.L.I.E.
JOINT UTILITY LOCATION INFORMATION FOR EXCAVATION
1-800-892-0123
OR 811

PROJECT ENGINEER TOM INGLIS (309)671-3481
PROJECT MANAGER NICK JACK (309) 671-3333

CONTRACT NO. 68B21

STATE OF ILLINOIS

DEPARTMENT OF TRANSPORTATION

DIVISION OF HIGHWAYS

PROPOSED
HIGHWAY PLANS

(VAR) ROUTE VARIOUS
SECTION D4 BRIDGE WASHING 2013
PROJECT N/A
TYPE of IMPROVEMENT

MARSHALL, TAZEWELL, MASON COUNTY

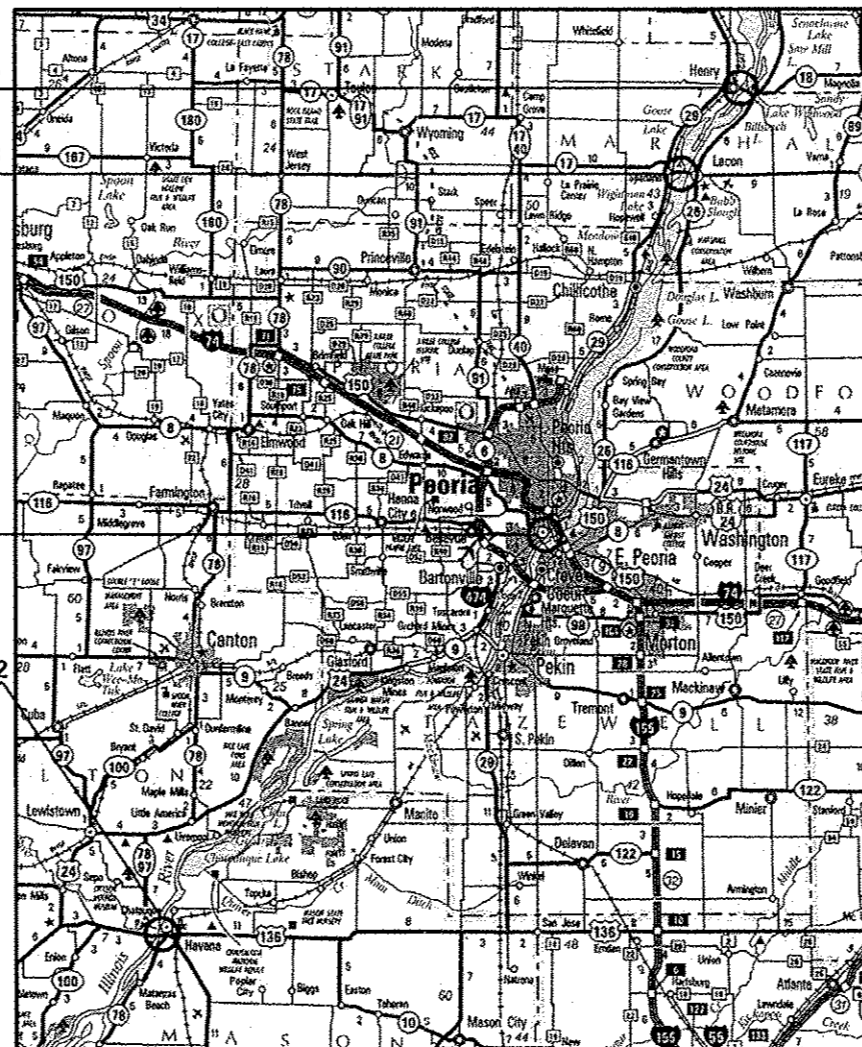
C-94-002-13

LOCATION 1 S.N. 062-0036

LOCATION 2 S.N. 062-0003

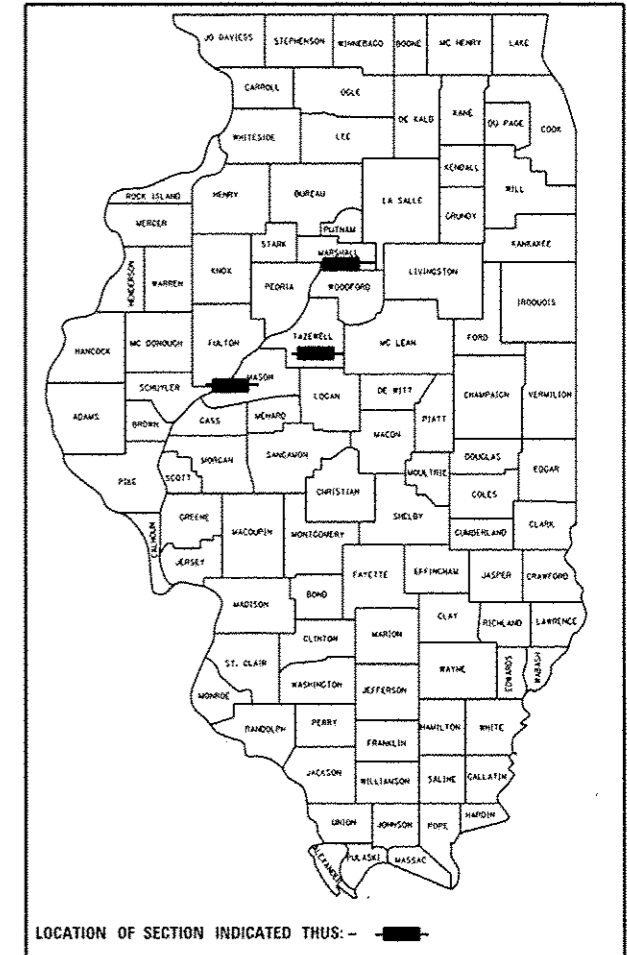
LOCATION 3 SEE PAGE 2

LOCATION 4 S.N. 063-0002



F.A. RTE.	SECTION	COUNTY	TOTAL SHEETS	SHEET NO.
VAR	D4 BRIDGE WASHING 2013	VARIOUS	8	1
		ILLINOIS	CONTRACT 68B21	

D-94-001-13



STATE OF ILLINOIS
DEPARTMENT OF TRANSPORTATION
DIVISION OF HIGHWAYS

SUBMITTED MARCH 26, 2013

Joseph E. Crown
DEPUTY DIRECTOR OF HIGHWAYS, REGION ENGINEER

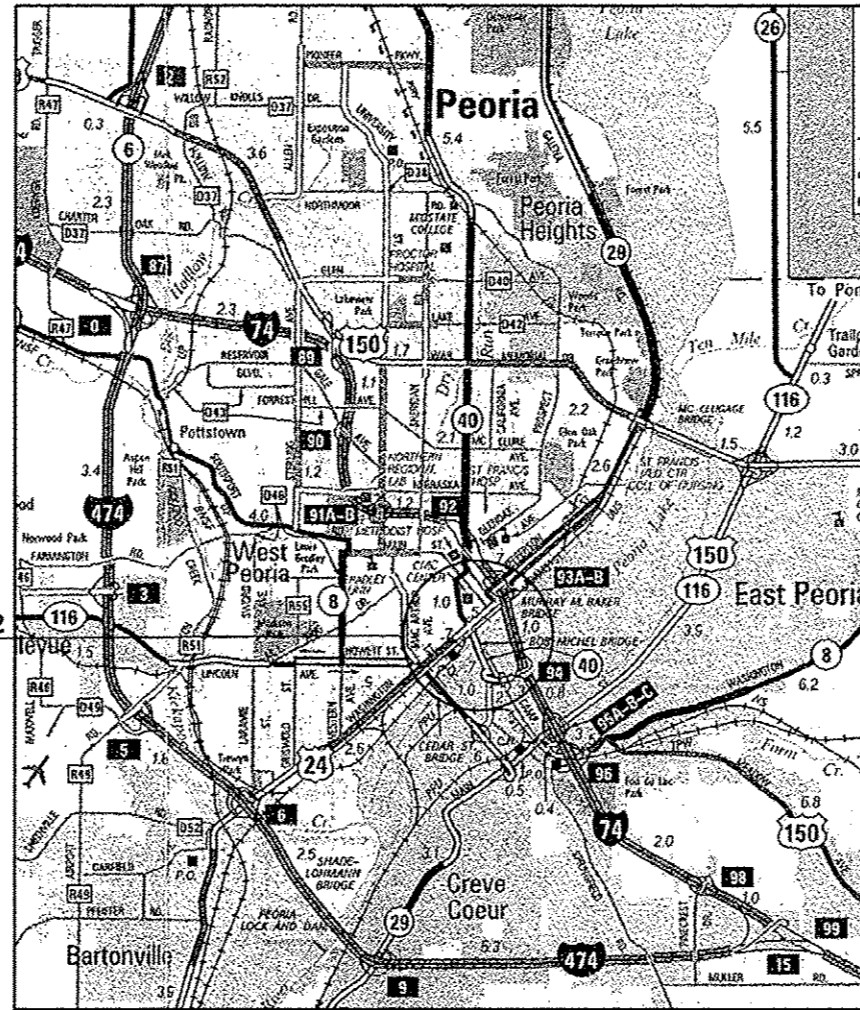
April 26, 2013
John D. Baranzelli, PE
ENGINEER OF DESIGN AND ENVIRONMENT

April 26, 2013
Chris Osman, PE
DIRECTOR OF HIGHWAYS, CHIEF ENGINEER

PRINTED BY THE AUTHORITY
OF THE STATE OF ILLINOIS

LOCATION 3 S.N. 090-0122

LOCATION 3 S.N. 090-0122



FILE NAME : 68821-Bridge Washing 2013.dgn	USER NAME : awbreygs	DESIGNED -	REVISED -	STATE OF ILLINOIS DEPARTMENT OF TRANSPORTATION	F.A. RTE.	SECTION	COUNTY	TOTAL SHEETS	SHEET NO.	
Default	PLOT SCALE : 100,0000' / in.	DRAWN -	REVISED -		VAR	D4 BRIDGE WASHING 2013	VARIOUS	8	2	
	PLOT DATE : 3/26/2013	CHECKED -	REVISED -		SCALE:	SHEET	OF	SHEETS	STA.	TO STA.
		DATE -	REVISED -		ILLINOIS FED. AID PROJECT					
					CONTRACT NO. 68821					

CODE NO.	ITEM	UNIT	TOTAL QUANTITY	CONSTRUCTION CODE		
				RURAL	URBAN	RURAL
				Marshall	Tazewell	Mason
				0014	0014	0014
				100 % State	100 % State	100 % State
59200101	BRIDGE WASHING NO. 1	EACH	1	1		
59200102	BRIDGE WASHING NO. 2	EACH	1	1		
59200103	BRIDGE WASHING NO. 3	EACH	1		1	
59200104	BRIDGE WASHING NO. 4	EACH	1			1
67100100	MOBILIZATION	L SUM	1	0.5	0.25	0.25
70100450	TRAFFIC CONTROL AND PROTECTION, STANDARD 701201	L SUM	1	0.5	0.25	0.25
X7015005	CHANGEABLE MESSAGE SIGN	CAL DA	12	6	3	3

COMMITMENTS

No Commitments have been made for this project.

GENERAL NOTES

Location 1,2 & 4 The entire Structure shall be done in accordance with Section 592 of the "Standard Specifications Road and Bridge Construction" Adopted January 1, 2012.

No additional compensation shall be allowed for work in section 592.04

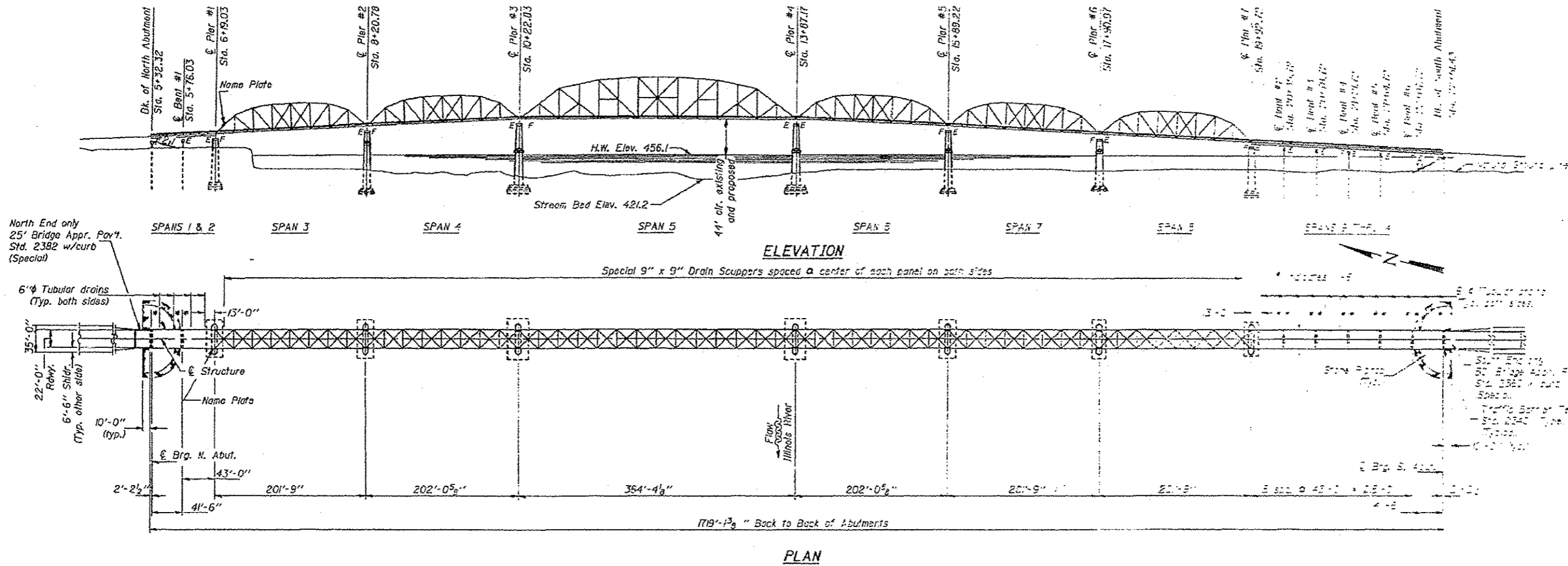
Location 3 shall be washed in accordance with Section 592 of the "Standard Specifications for Road and Bridge Construction" Adopted January 1, 2012. The areas to be washed as designated in the plans. These areas shall include drain troughs beneath the expansion devices and 10' either side of the expansion joints, top of pier caps and abutments immediately adjacent of the expansion joint. Entire Bridge deck, curb, sidewalk, drains and drainage systems.

No additional compensation shall be allowed for work in section 592.04

FILE NAME : 68B21-Bridge Washing 2013.dgn	USER NAME : autreygs	DESIGNED -	REVISED -	STATE OF ILLINOIS DEPARTMENT OF TRANSPORTATION	SCALE:		SHEET	OF	SHEETS	STA.	TO STA.	F.A. RTE. VAR	SECTION 04 BRIDGE WASHING 2013	COUNTY VARIOUS	TOTAL SHEETS 8	SHEET NO. 4	
Default	PLOT SCALE : 100.0000 / in.	CHECKED -	REVISED -		CONTRACT NO. 68B21								ILLINOIS FED. AID PROJECT				
	PLOT DATE : 3/26/2013	DATE -	REVISED -														

Location 1 (IL 18 over IL River)

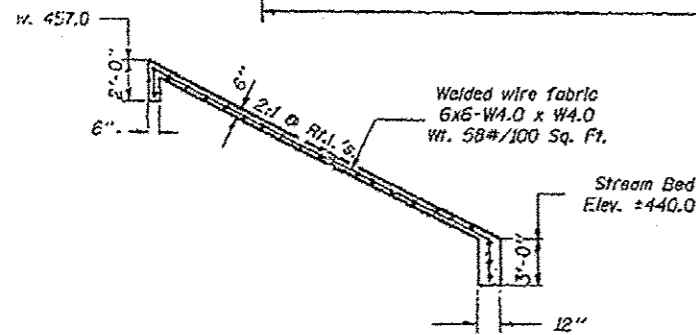
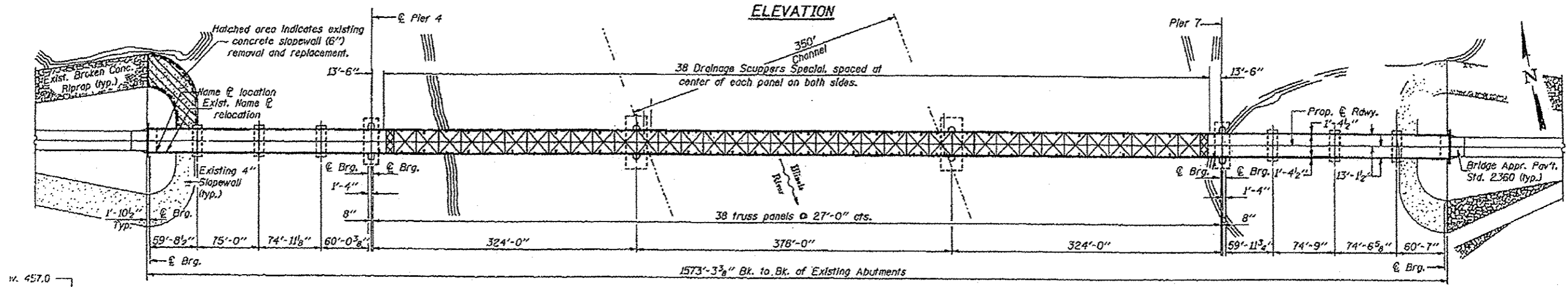
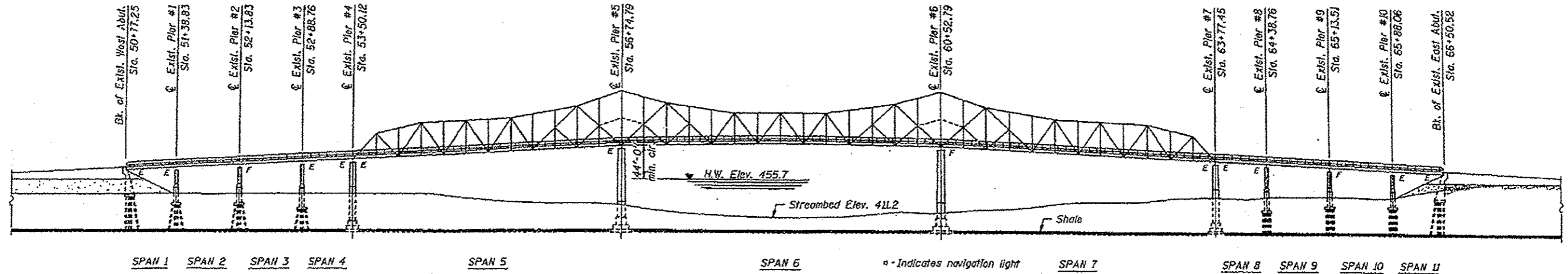
For information Only



S.N. 062-0036

FILE NAME : 60821-Bridge Washing 2013.dgn	USER NAME : akroygs	DESIGNED -	REVISED -	STATE OF ILLINOIS DEPARTMENT OF TRANSPORTATION	F.A. RTE. VAR	SECTION 04 BRIDGE WASHING 2013	COUNTY VARIOUS	TOTAL SHEETS 8	SHEET NO. 5	
Default	PLOT SCALE : 100.0000' / 1"	DRAWN -	REVISED -		SCALE:	SHEET	OF	SHEETS	STA.	TO STA.
	PLOT DATE : 3/26/2013	CHECKED -	REVISED -							
		DATE -	REVISED -							
					ILLINOIS FED. AID PROJECT		CONTRACT NO. 68B21			

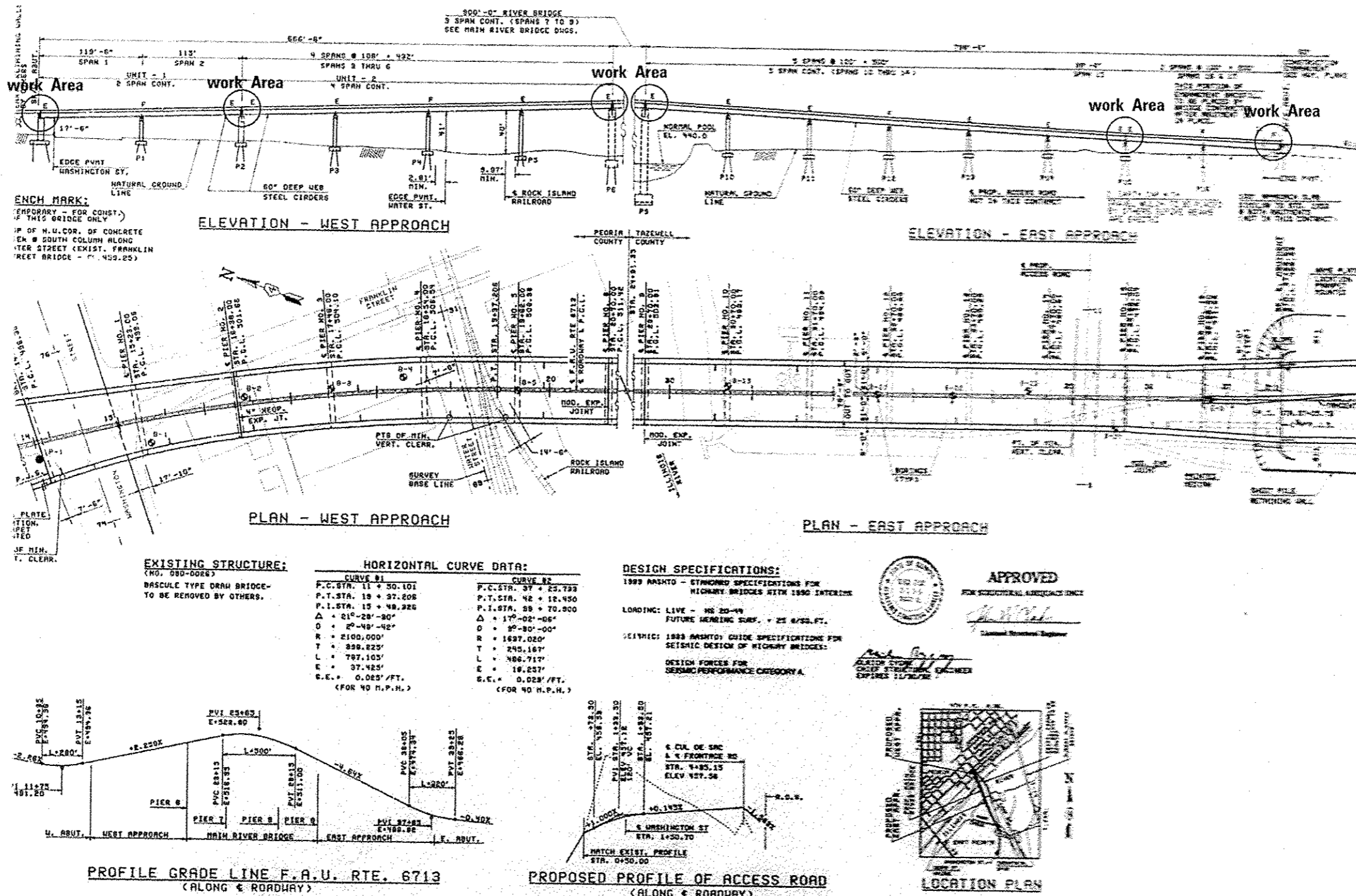
Location 2 (IL 17 over IL River) For information Only



S.N. 062-0003

FILE NAME : 68821-Bridge Washing 2013.dgn	USER NAME : oubrayga	DESIGNED - DRAWN -	REVISED - REVISED -	STATE OF ILLINOIS DEPARTMENT OF TRANSPORTATION	F.A. RTE. VAR	SECTION D4 BRIDGE WASHING 2013	COUNTY VARIOUS	TOTAL SHEETS 8	SHEET NO. 6	
Default	PLOT SCALE : 100.0000' / 1"	CHECKED - DATE -	REVISED - REVISED -		SCALE:	SHEET	OF	SHEETS	STA.	TO STA.
	PLOT DATE : 3/26/2013				ILLINOIS FED. AID PROJECT CONTRACT NO. 68821					

Location 3 (IL 40 over IL River) For information Only



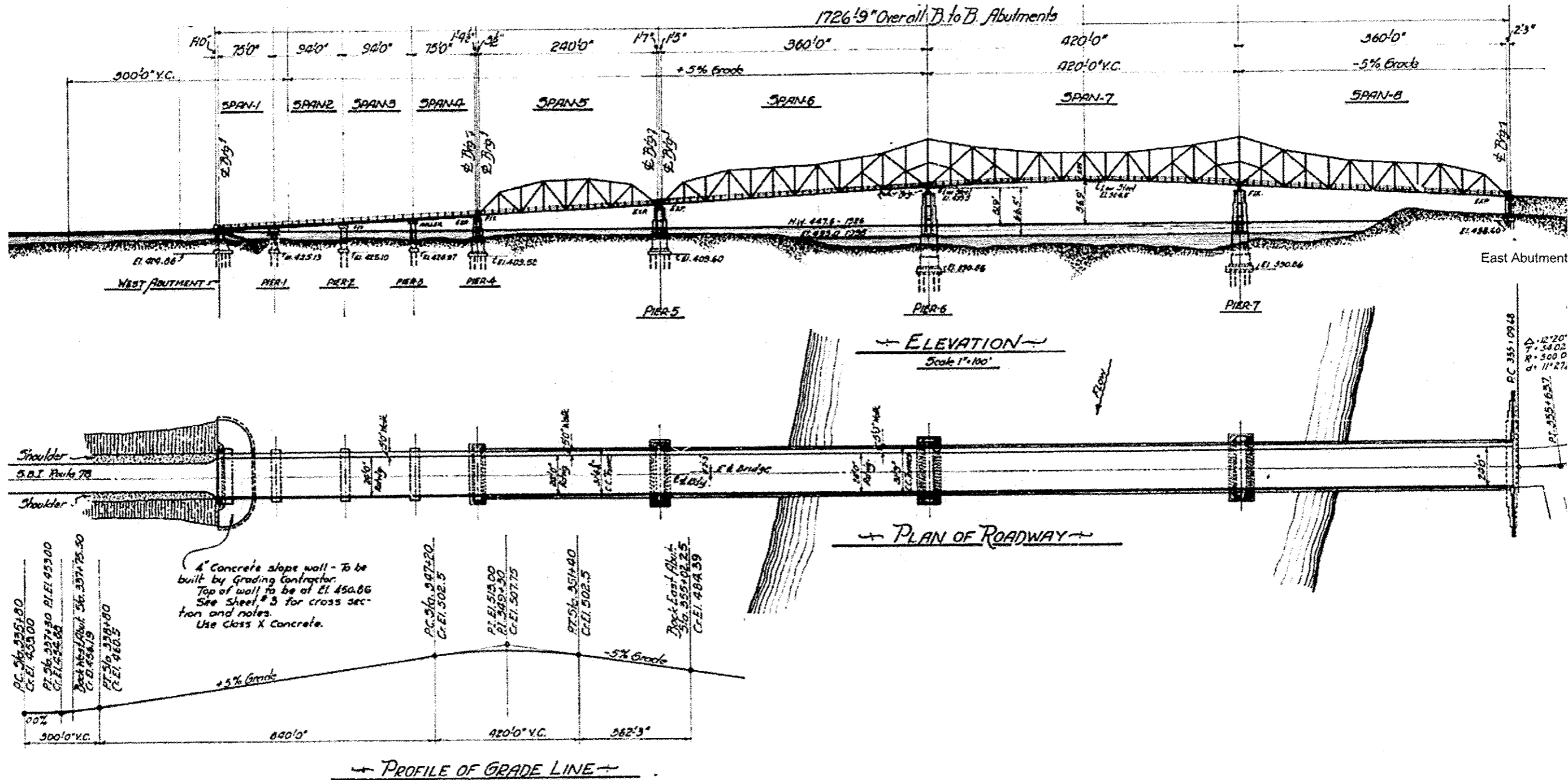
APPROVED
FOR SCIENTIFIC RECORDS SINCE
[Signature]
District Engineer

DESIGN CHECKED BY
[Signature]
EXPIRES 12/31/2012

FILE NAME : 60821-Bridge Washing 2013.dgn	USER NAME : coubreygs	DESIGNED - DRAWN - CHECKED - DATE -	REVISED - REVISED - REVISED - REVISED -	STATE OF ILLINOIS DEPARTMENT OF TRANSPORTATION		F.A. RTE.	SECTION	COUNTY	TOTAL SHEETS	SHEET NO.	
Default	PLOT SCALE : 100.0000' / in. PLOT DATE : 3/26/2013					VAR	D4 BRIDGE WASHING 2013	VARIOUS	0	7	
						SCALE:	SHEET	OF	SHEETS	STA.	TO STA.
						ILLINOIS FED. AID PROJECT CONTRACT NO. 68B21					

Location 4 (IL 136 over IL River)

For information Only



FILE NAME : 68B21-Bridge Washing 2013.dgn	USER NAME : oubreyga	DESIGNED -	REVISED -	STATE OF ILLINOIS DEPARTMENT OF TRANSPORTATION	F.A. RTE.:	SECTION	COUNTY	TOTAL SHEETS	SHEET NO.	
		DRAWN -	REVISED -		VAR	D4 BRIDGE WASHING 2013	VARIOUS	8	8	
		CHECKED -	REVISED -		CONTRACT NO. 68B21					
		DATE -	REVISED -		ILLINOIS FED. AID PROJECT					
PLOT SCALE : 1/80.0000" = 1'					SCALE: SHEET OF SHEETS STA. TO STA.					
PLOT DATE : 3/26/2013										